

Data Path : Z:\pestpcbsrv\HPCHEM1\FID_B\Data\FB012120\
 Data File : FB023469.D
 Signal(s) : FID2B.CH
 Acq On : 21 Jan 2020 13:19
 Operator : DD/AJ
 Sample : 20 PPB GRO STD
 Misc :
 ALS Vial : 8 Sample Multiplier: 1

Integration File: Calibration.e
 Quant Time: Jan 22 01:05:18 2020
 Quant Method : Z:\pestpcbsrv\HPCHEM1\FID_B\Method\FB011620.M
 Quant Title :
 QLast Update : Thu Jan 16 11:42:55 2020
 Response via : Initial Calibration
 Integrator: ChemStation

Volume Inj. : 5 g/ml
 Signal Phase : RTX-502.2
 Signal Info : 60mx0.53mmx3.00um

Compound	R.T.	Response	Conc Units

System Monitoring Compounds			
5) s AAA-TFT	8.793	435689	18.342 ng/ml
Target Compounds			
1) t 2-Methylpentane	4.686	783352	24.789 ng/ml
2) t 2,2,4-Trimethylpentane	7.412	847975	24.975 ng/ml
3) t n-Heptane	7.752	278938	8.330 ng/ml
4) t Benzene	7.887	383269	9.385 ng/ml
6) t Toluene	10.625	1096102	27.737 ng/ml
7) t Ethylbenzene	13.065	338773	9.071 ng/ml
8) t m-Xylene	13.198	649895	18.276 ng/ml
9) t O-Xylene	13.926	642823	18.604 ng/ml
10) t 1,2,4-Trimethylbenzene	16.204	563456	19.270 ng/ml

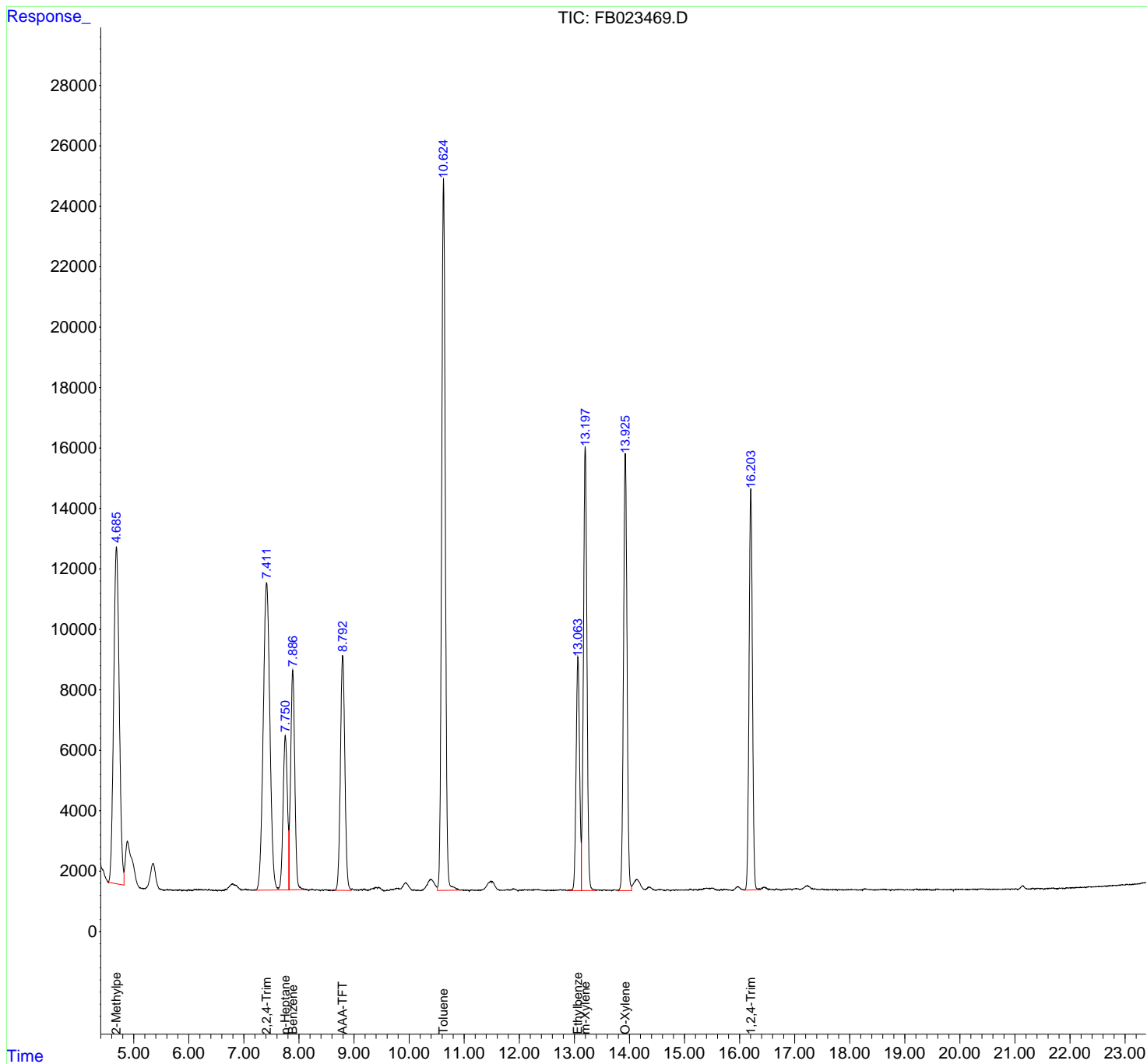
(f)=RT Delta > 1/2 Window

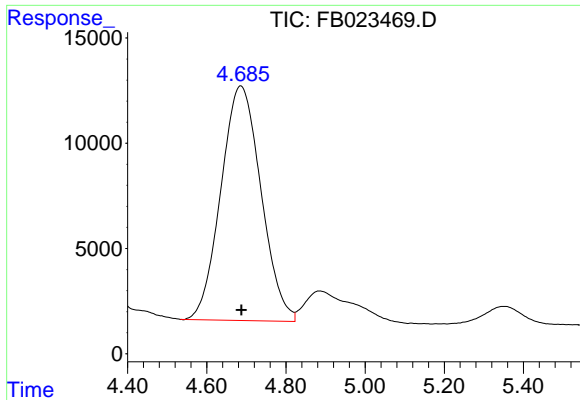
(m)=manual int.

Data Path : Z:\pestpcbsrv\HPCHEM1\FID_B\Data\FB012120\
 Data File : FB023469.D
 Signal(s) : FID2B.CH
 Acq On : 21 Jan 2020 13:19
 Operator : DD/AJ
 Sample : 20 PPB GRO STD
 Misc :
 ALS Vial : 8 Sample Multiplier: 1

Integration File: Calibration.e
 Quant Time: Jan 22 01:05:18 2020
 Quant Method : Z:\pestpcbsrv\HPCHEM1\FID_B\Method\FB011620.M
 Quant Title :
 QLast Update : Thu Jan 16 11:42:55 2020
 Response via : Initial Calibration
 Integrator: ChemStation

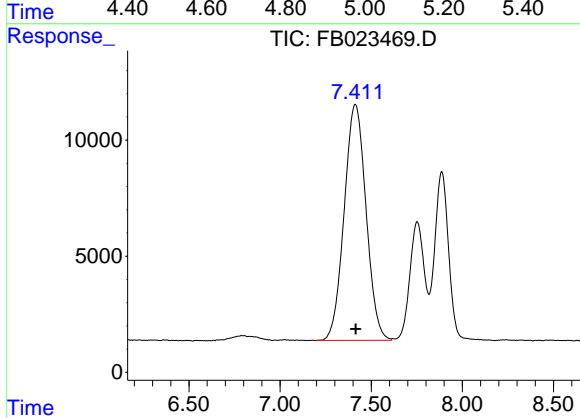
Volume Inj. : 5 g/ml
 Signal Phase : RTX-502.2
 Signal Info : 60mx0.53mmx3.00um





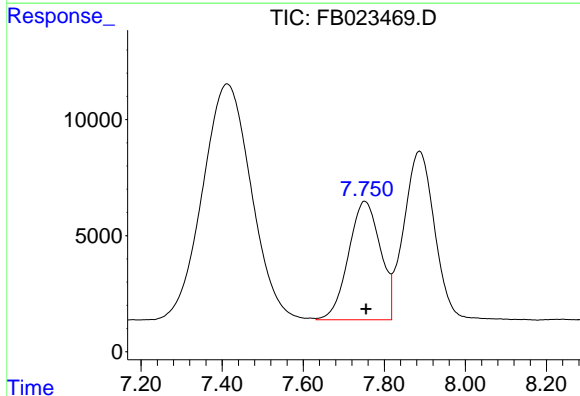
#1 2-Methylpentane

R.T.: 4.686 min
 Delta R.T.: 0.000 min
 Response: 783352
 Conc: 24.79 ng/ml



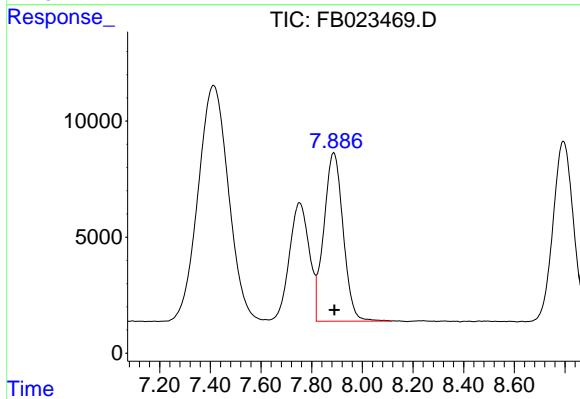
#2 2,2,4-Trimethylpentane

R.T.: 7.412 min
 Delta R.T.: -0.003 min
 Response: 847975
 Conc: 24.97 ng/ml



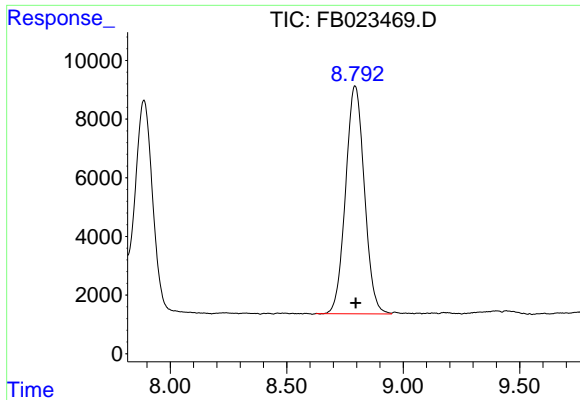
#3 n-Heptane

R.T.: 7.752 min
 Delta R.T.: -0.003 min
 Response: 278938
 Conc: 8.33 ng/ml

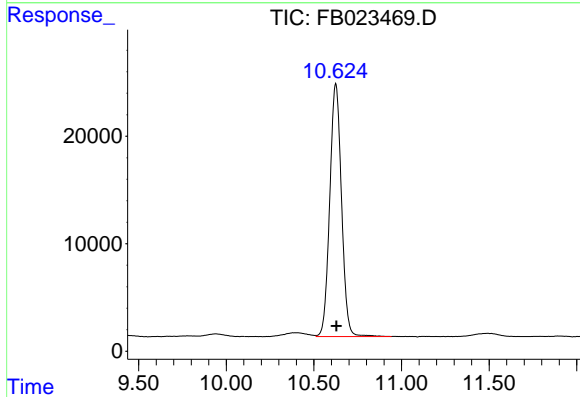


#4 Benzene

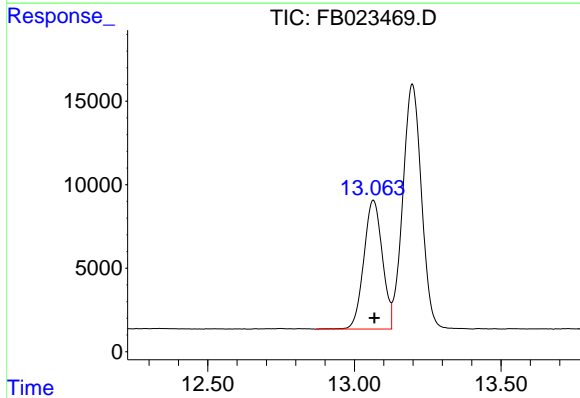
R.T.: 7.887 min
 Delta R.T.: -0.002 min
 Response: 383269
 Conc: 9.39 ng/ml



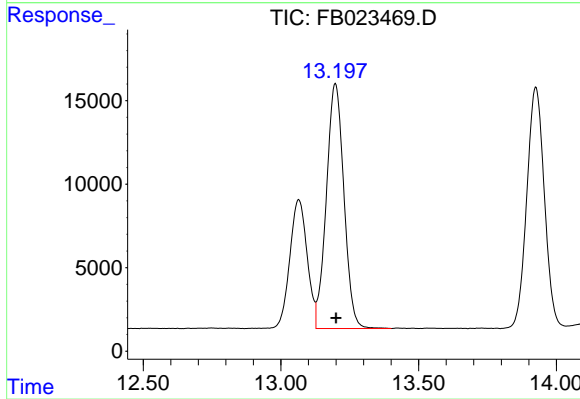
#5 AAA-TFT
R.T.: 8.793 min
Delta R.T.: -0.003 min
Response: 435689
Conc: 18.34 ng/ml



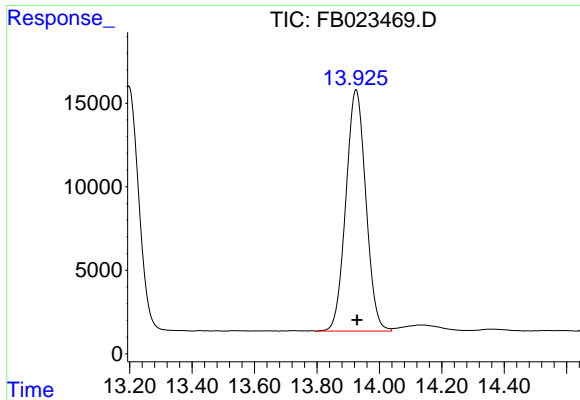
#6 Toluene
R.T.: 10.625 min
Delta R.T.: -0.002 min
Response: 1096102
Conc: 27.74 ng/ml



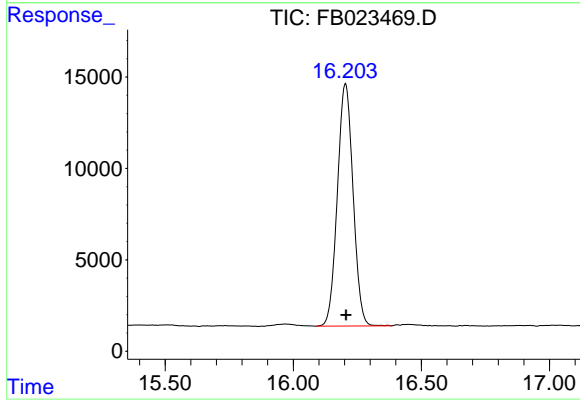
#7 Ethylbenzene
R.T.: 13.065 min
Delta R.T.: -0.003 min
Response: 338773
Conc: 9.07 ng/ml



#8 m-Xylene
R.T.: 13.198 min
Delta R.T.: -0.003 min
Response: 649895
Conc: 18.28 ng/ml



#9 O-Xylene
R.T.: 13.926 min
Delta R.T.: -0.003 min
Response: 642823
Conc: 18.60 ng/ml



#10 1,2,4-Trimethylbenzene
R.T.: 16.204 min
Delta R.T.: -0.003 min
Response: 563456
Conc: 19.27 ng/ml