

Data Path : Z:\pestpcbsrv\HPCHEM1\FID\_B\Data\FB012419\  
 Data File : FB019486.D  
 Signal(s) : FID2B.CH  
 Acq On : 24 Jan 2019 8:52  
 Operator : MJ/SJ  
 Sample : 20 PPB GRO STD  
 Misc :  
 ALS Vial : 1 Sample Multiplier: 1

Integration File: Calibration.e  
 Quant Time: Jan 25 00:47:36 2019  
 Quant Method : Z:\pestpcbsrv\HPCHEM1\FID\_B\Method\FB010819.M  
 Quant Title :  
 QLast Update : Wed Jan 09 07:19:31 2019  
 Response via : Initial Calibration  
 Integrator: ChemStation

Volume Inj. : 5 g/ml  
 Signal Phase : RTX-502.2  
 Signal Info : 60mx0.53mmx3.00um

Compound	R.T.	Response	Conc Units
-----			
System Monitoring Compounds			
5) s AAA-TFT	9.053	182536	20.542 ng/ml
Target Compounds			
1) t 2-Methylpentane	4.902	503564	25.284 ng/ml
2) t 2,2,4-Trimethylpentane	7.665	499028	26.196 ng/ml
3) t n-Heptane	8.006	162508	9.314 ng/ml
4) t Benzene	8.143	197123	10.039 ng/ml
6) t Toluene	10.899	507684	28.066 ng/ml
7) t Ethylbenzene	13.351	210426	9.498 ng/ml
8) t m-Xylene	13.484	439729	19.162 ng/ml
9) t O-Xylene	14.215	434361	19.359 ng/ml
10) t 1,2,4-Trimethylbenzene	16.502	459780	20.164 ng/ml
-----			

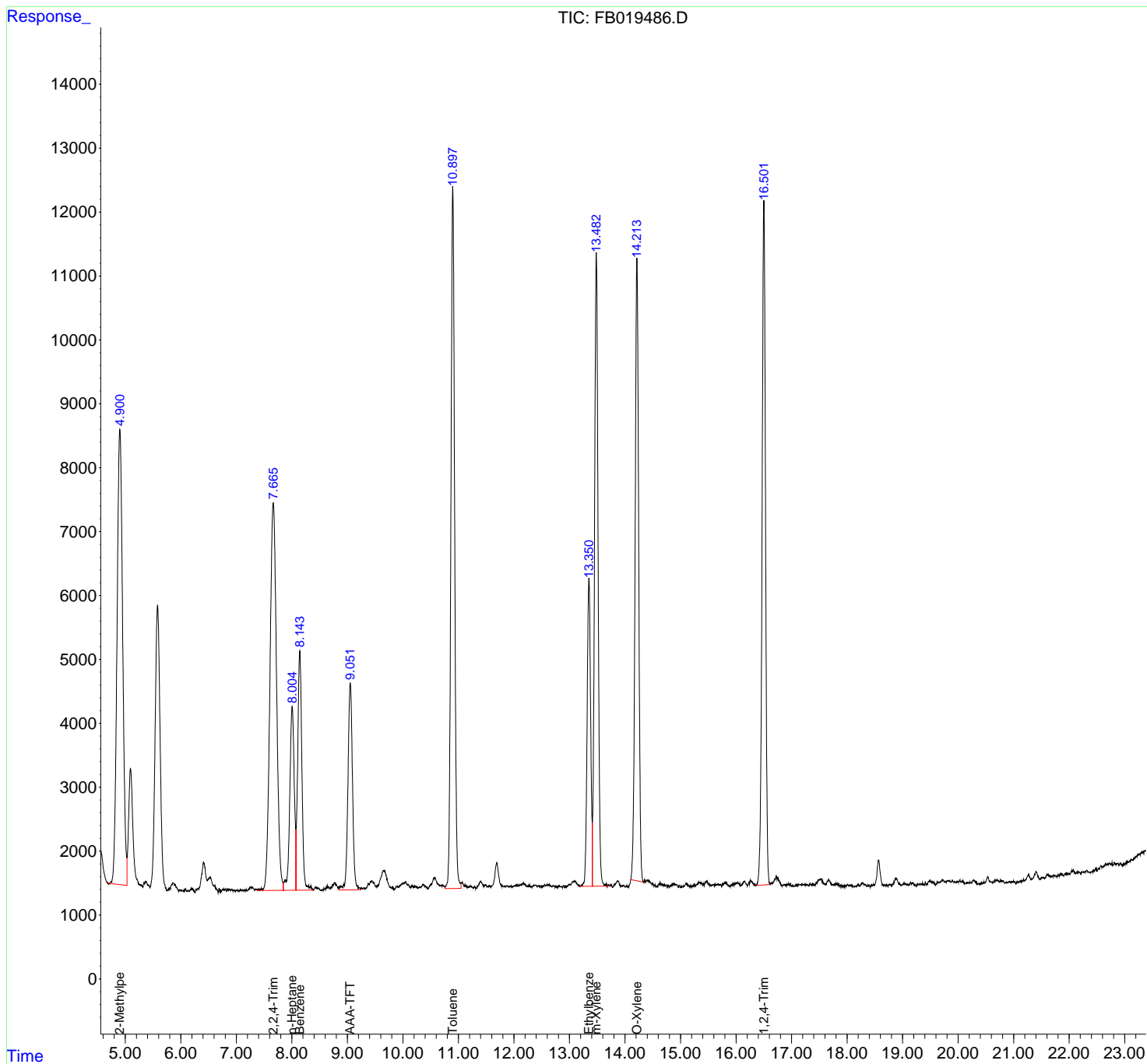
(f)=RT Delta > 1/2 Window

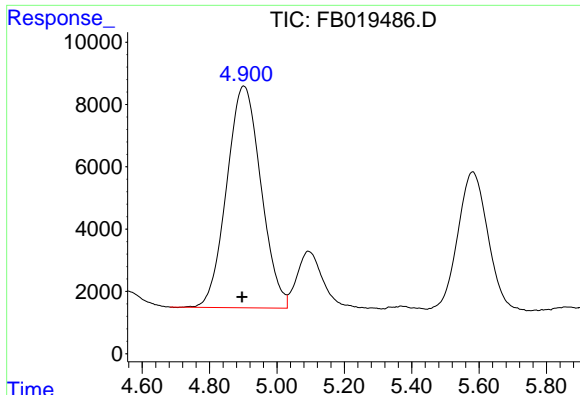
(m)=manual int.

Data Path : Z:\pestpcbsrv\HPCHEM1\FID\_B\Data\FB012419\  
 Data File : FB019486.D  
 Signal(s) : FID2B.CH  
 Acq On : 24 Jan 2019 8:52  
 Operator : MJ/SJ  
 Sample : 20 PPB GRO STD  
 Misc :  
 ALS Vial : 1 Sample Multiplier: 1

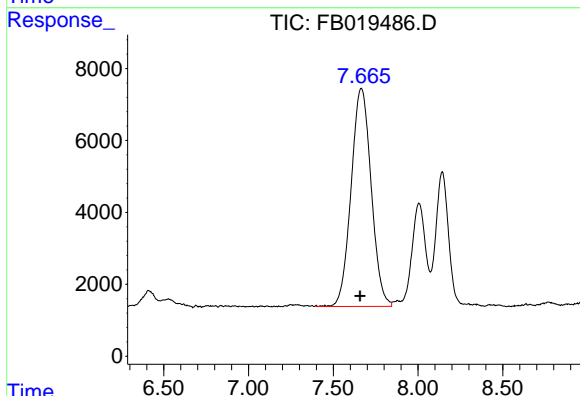
Integration File: Calibration.e  
 Quant Time: Jan 25 00:47:36 2019  
 Quant Method : Z:\pestpcbsrv\HPCHEM1\FID\_B\Method\FB010819.M  
 Quant Title :  
 QLast Update : Wed Jan 09 07:19:31 2019  
 Response via : Initial Calibration  
 Integrator: ChemStation

Volume Inj. : 5 g/ml  
 Signal Phase : RTX-502.2  
 Signal Info : 60mx0.53mmx3.00um

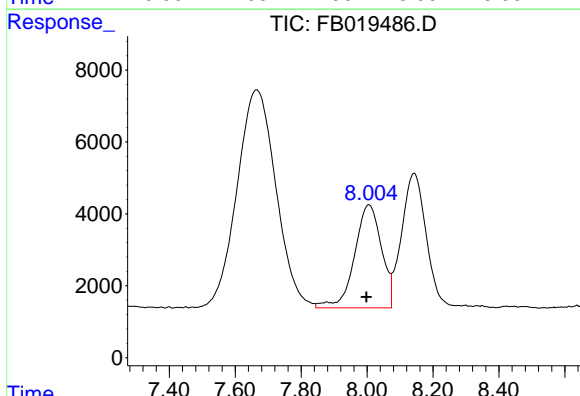




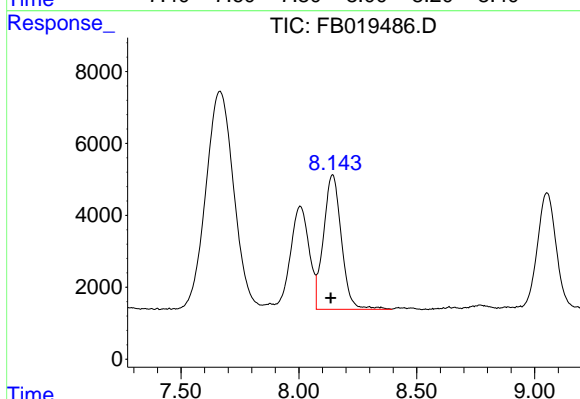
#1 2-Methylpentane  
 R.T.: 4.902 min  
 Delta R.T.: 0.005 min  
 Response: 503564  
 Conc: 25.28 ng/ml



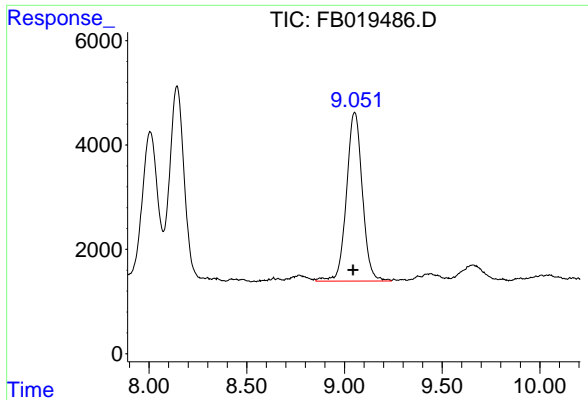
#2 2,2,4-Trimethylpentane  
 R.T.: 7.665 min  
 Delta R.T.: 0.007 min  
 Response: 499028  
 Conc: 26.20 ng/ml



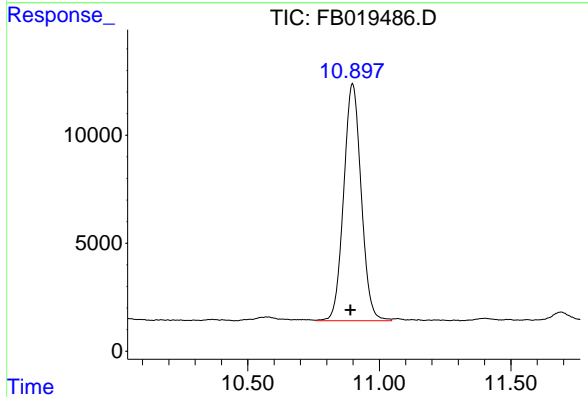
#3 n-Heptane  
 R.T.: 8.006 min  
 Delta R.T.: 0.008 min  
 Response: 162508  
 Conc: 9.31 ng/ml



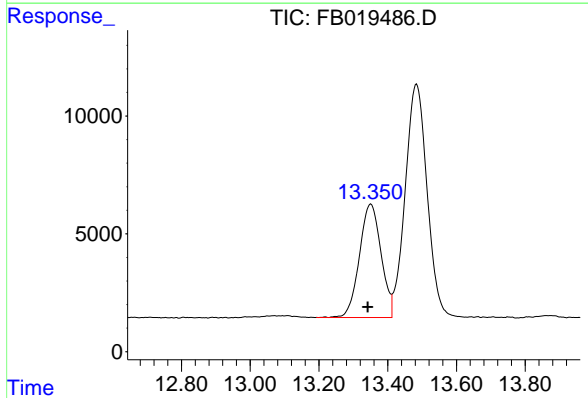
#4 Benzene  
 R.T.: 8.143 min  
 Delta R.T.: 0.008 min  
 Response: 197123  
 Conc: 10.04 ng/ml



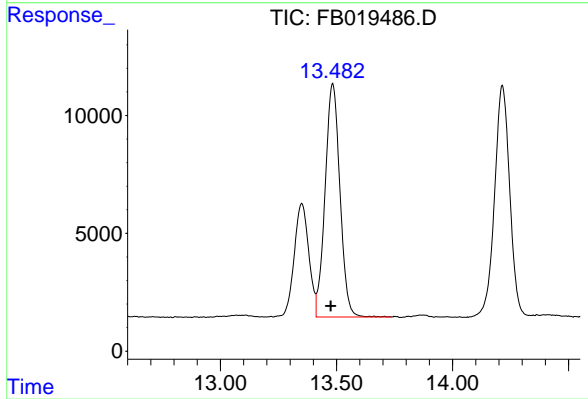
#5 AAA-TFT  
R.T.: 9.053 min  
Delta R.T.: 0.009 min  
Response: 182536  
Conc: 20.54 ng/ml



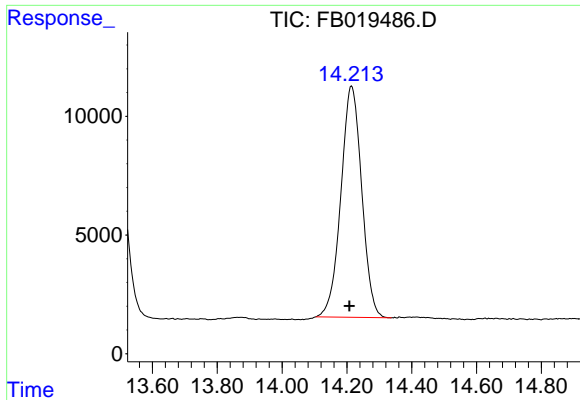
#6 Toluene  
R.T.: 10.899 min  
Delta R.T.: 0.008 min  
Response: 507684  
Conc: 28.07 ng/ml



#7 Ethylbenzene  
R.T.: 13.351 min  
Delta R.T.: 0.009 min  
Response: 210426  
Conc: 9.50 ng/ml

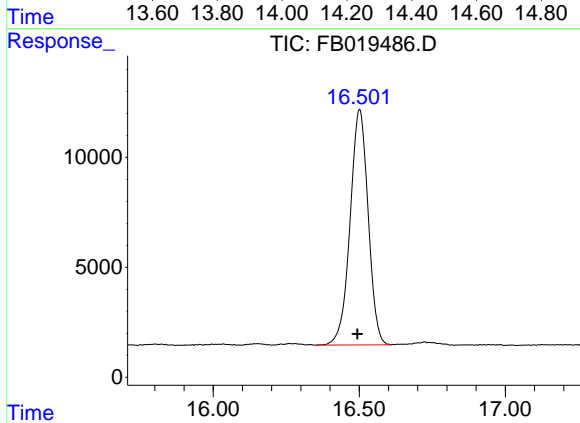


#8 m-Xylene  
R.T.: 13.484 min  
Delta R.T.: 0.008 min  
Response: 439729  
Conc: 19.16 ng/ml



#9 O-Xylene

R.T.: 14.215 min  
Delta R.T.: 0.007 min  
Response: 434361  
Conc: 19.36 ng/ml



#10 1,2,4-Trimethylbenzene

R.T.: 16.502 min  
Delta R.T.: 0.008 min  
Response: 459780  
Conc: 20.16 ng/ml