

Data Path : Z:\pestpcbsrv\HPCHEM1\FID_B\Data\FB012420\
 Data File : FB023515.D
 Signal(s) : FID2B.CH
 Acq On : 24 Jan 2020 21:02
 Operator : DD/AJ
 Sample : L1247-29
 Misc : 5.09g/5.00ml DI WATER
 ALS Vial : 25 Sample Multiplier: 1

Instrument :
 FID_B
 ClientSampleId :
 TP-13-15-COMP

Integration File: Calibration.e
 Quant Time: Jan 24 21:49:57 2020
 Quant Method : Z:\pestpcbsrv\HPCHEM1\FID_B\Method\FB011620.M
 Quant Title :
 QLast Update : Thu Jan 16 11:42:55 2020
 Response via : Initial Calibration
 Integrator: ChemStation

Volume Inj. : 5 g/ml
 Signal Phase : RTX-502.2
 Signal Info : 60mx0.53mmx3.00um

| Compound | R.T. | Response | Conc Units |
|-----------------------------|-------|----------|--------------|
| ----- | | | |
| System Monitoring Compounds | | | |
| 5) s AAA-TFT | 8.796 | 596845 | 25.126 ng/ml |
| Target Compounds | | | |
| ----- | | | |

(f)=RT Delta > 1/2 Window

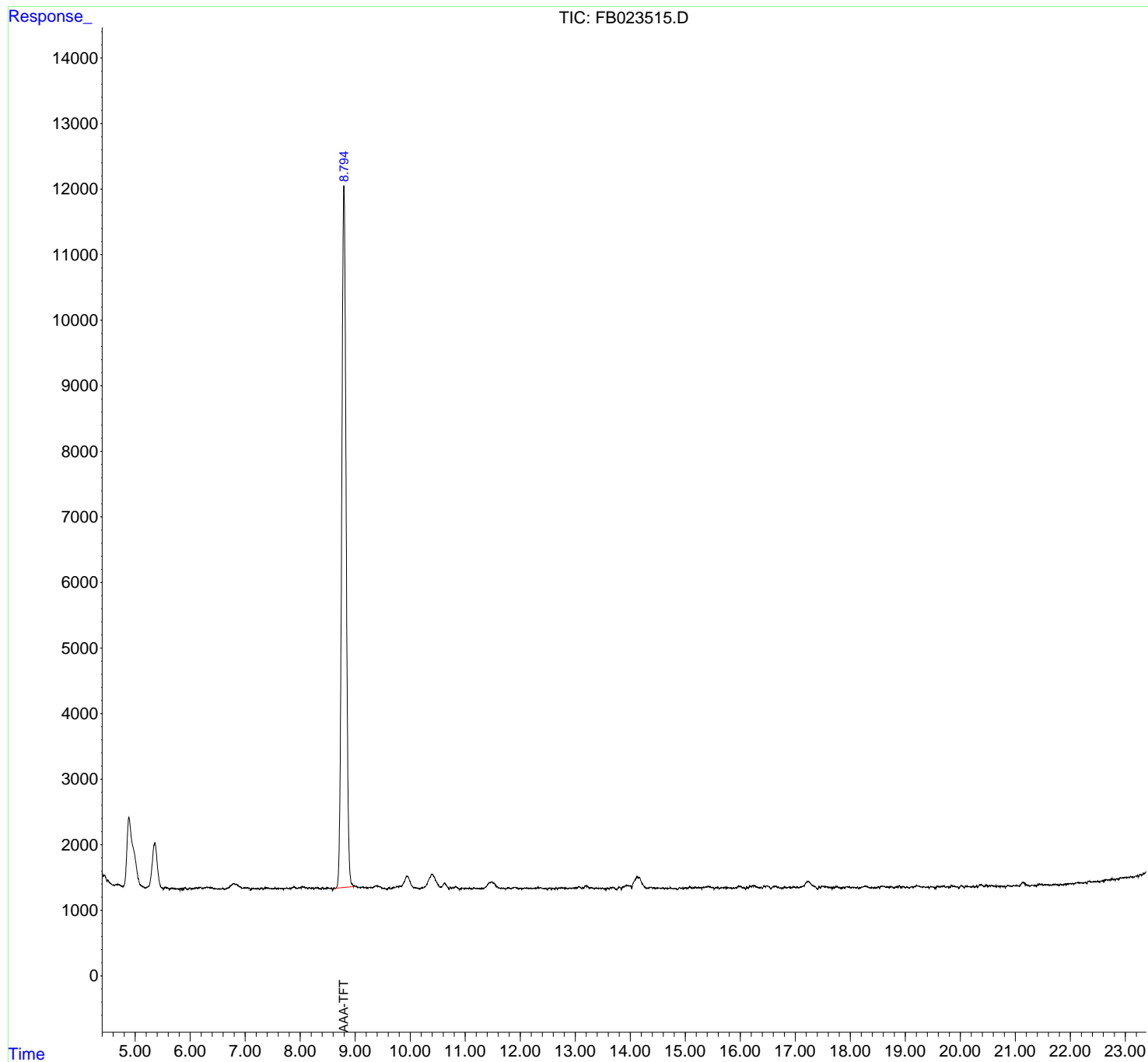
(m)=manual int.

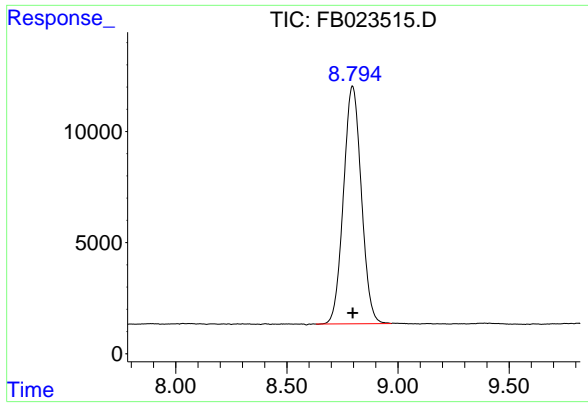
Data Path : Z:\pestpcbsrv\HPCHEM1\FID_B\Data\FB012420\
Data File : FB023515.D
Signal(s) : FID2B.CH
Acq On : 24 Jan 2020 21:02
Operator : DD/AJ
Sample : L1247-29
Misc : 5.09g/5.00ml DI WATER
ALS Vial : 25 Sample Multiplier: 1

Instrument :
FID_B
ClientSampleId :
TP-13-15-COMP

Integration File: Calibration.e
Quant Time: Jan 24 21:49:57 2020
Quant Method : Z:\pestpcbsrv\HPCHEM1\FID_B\Method\FB011620.M
Quant Title :
QLast Update : Thu Jan 16 11:42:55 2020
Response via : Initial Calibration
Integrator: ChemStation

Volume Inj. : 5 g/ml
Signal Phase : RTX-502.2
Signal Info : 60mx0.53mmx3.00um





#5 AAA-TFT

R.T.: 8.796 min
Delta R.T.: -0.001 min
Response: 596845
Conc: 25.13 ng/ml

Instrument :
FID_B
ClientSampleId :
TP-13-15-COMP