

Data Path : Z:\pestpcbsrv\HPCHEM1\FID_B\Data\FB012725\
 Data File : FB031345.D
 Signal(s) : FID2B.CH
 Acq On : 27 Jan 2025 9:37
 Operator : YP/AJ
 Sample : VBF0127S1
 Misc : 5.00G/5.00 ML DI WATER
 ALS Vial : 2 Sample Multiplier: 1

Instrument :
 FID_B
 ClientSampleId :

Integration File: Calibration.e
 Quant Time: Jan 28 00:29:03 2025
 Quant Method : Z:\pestpcbsrv\HPCHEM1\FID_B\Method\FB011525.M
 Quant Title :
 QLast Update : Wed Jan 15 12:01:08 2025
 Response via : Initial Calibration
 Integrator: ChemStation

Volume Inj. : 5 g/ml
 Signal Phase : RTX-502.2
 Signal Info : 60mx0.53mmx3.00um

| Compound | R.T. | Response | Conc Units |
|------------------------------|--------|----------|--------------|
| ----- | | | |
| System Monitoring Compounds | | | |
| 5) s AAA-TFT | 8.787 | 422999 | 17.734 ng/ml |
| Target Compounds | | | |
| 6) t Toluene | 10.617 | 3893 | 0.100 ng/ml |
| 8) t m-Xylene | 13.196 | 5874 | 0.157 ng/ml |
| 9) t O-Xylene | 13.925 | 6987 | 0.196 ng/ml |
| 10) t 1,2,4-Trimethylbenzene | 16.192 | 11631 | 0.411 ng/ml |
| ----- | | | |

(f)=RT Delta > 1/2 Window

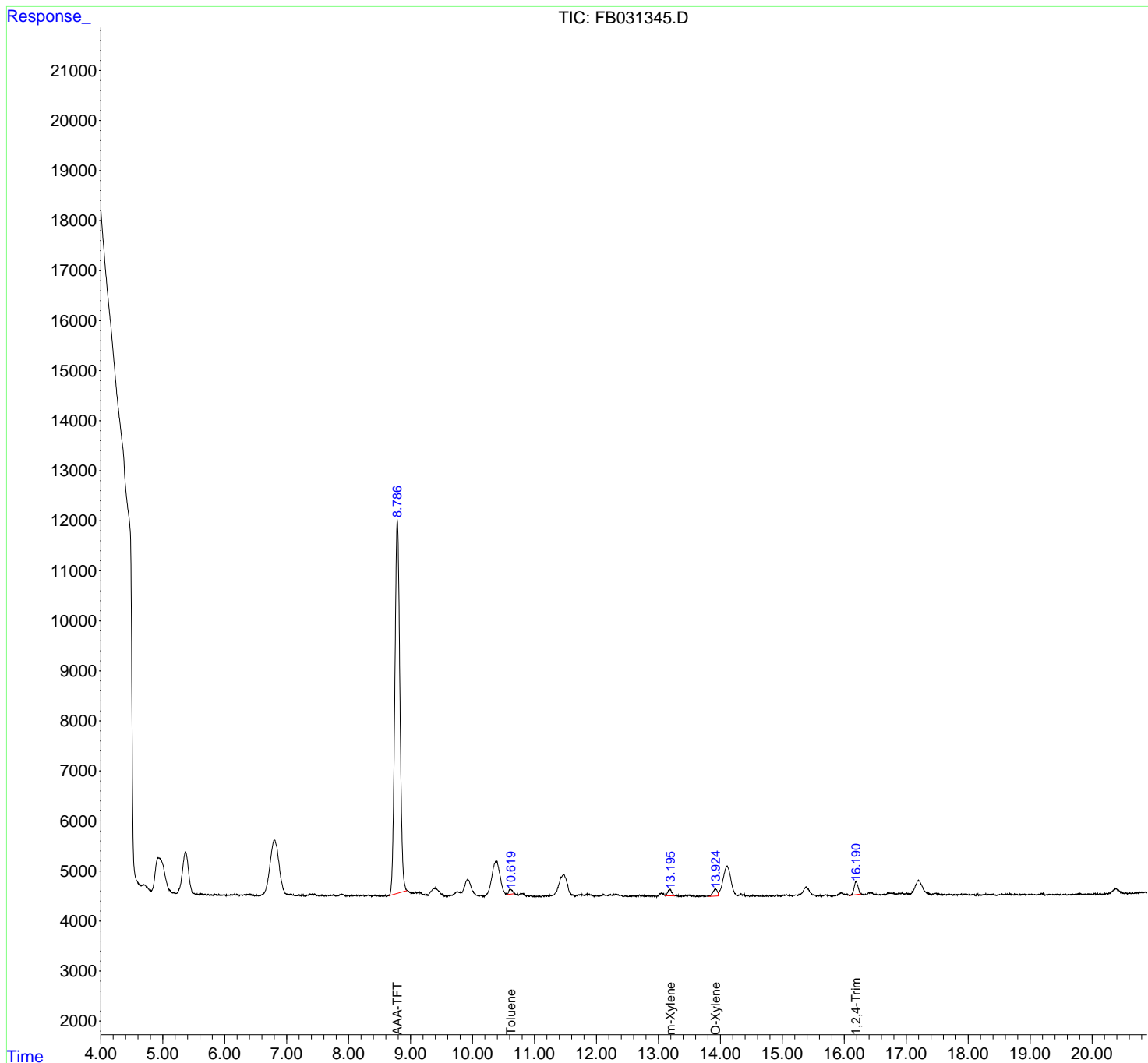
(m)=manual int.

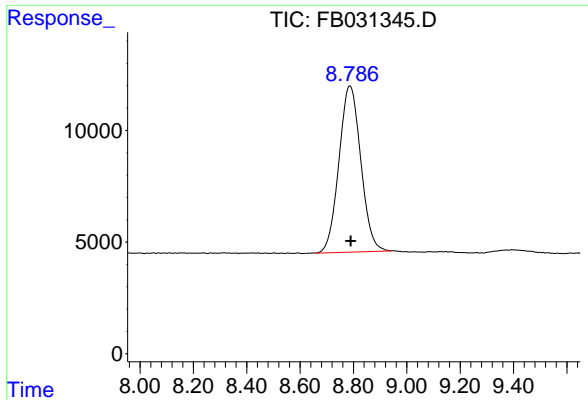
Data Path : Z:\pestpcbsrv\HPCHEM1\FID_B\Data\FB012725\
 Data File : FB031345.D
 Signal(s) : FID2B.CH
 Acq On : 27 Jan 2025 9:37
 Operator : YP/AJ
 Sample : VBF0127S1
 Misc : 5.00G/5.00 ML DI WATER
 ALS Vial : 2 Sample Multiplier: 1

Instrument :
 FID_B
 ClientSampleId :

Integration File: Calibration.e
 Quant Time: Jan 28 00:29:03 2025
 Quant Method : Z:\pestpcbsrv\HPCHEM1\FID_B\Method\FB011525.M
 Quant Title :
 QLast Update : Wed Jan 15 12:01:08 2025
 Response via : Initial Calibration
 Integrator: ChemStation

Volume Inj. : 5 g/ml
 Signal Phase : RTX-502.2
 Signal Info : 60mx0.53mmx3.00um

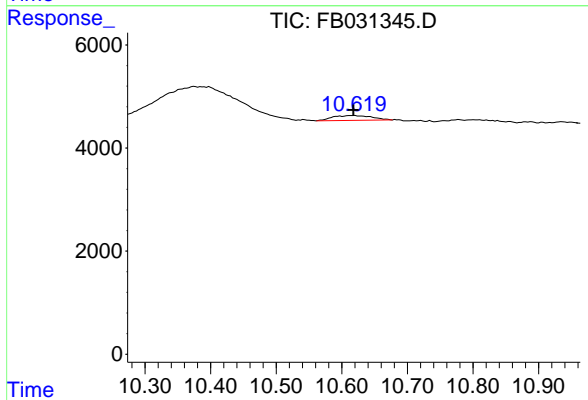




#5 AAA-TFT

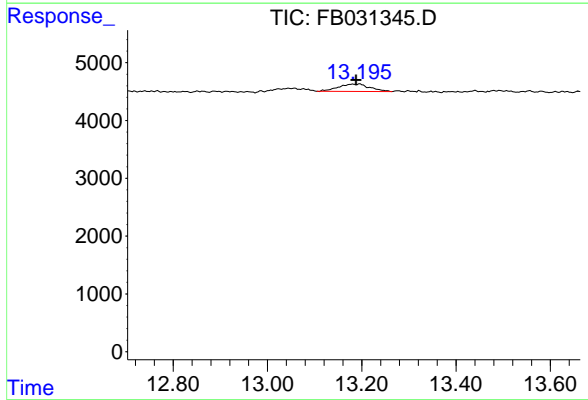
R.T.: 8.787 min
 Delta R.T.: -0.003 min
 Response: 422999
 Conc: 17.73 ng/ml

Instrument :
 FID_B
 ClientSampleId :



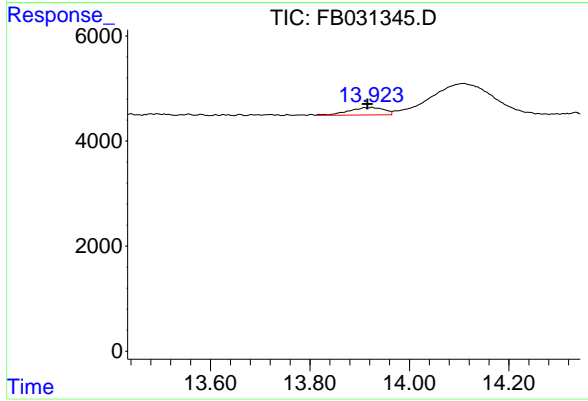
#6 Toluene

R.T.: 10.617 min
 Delta R.T.: 0.000 min
 Response: 3893
 Conc: 0.10 ng/ml



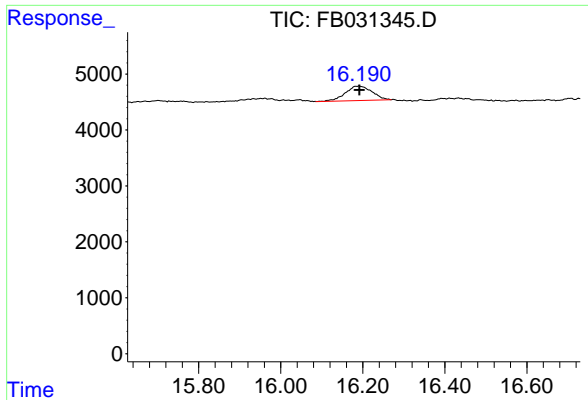
#8 m-Xylene

R.T.: 13.196 min
 Delta R.T.: 0.008 min
 Response: 5874
 Conc: 0.16 ng/ml



#9 O-Xylene

R.T.: 13.925 min
 Delta R.T.: 0.010 min
 Response: 6987
 Conc: 0.20 ng/ml



#10 1,2,4-Trimethylbenzene

R.T.: 16.192 min
Delta R.T.: 0.000 min
Response: 11631
Conc: 0.41 ng/ml

Instrument : FID_B
ClientSampleId :