

Data Path : Z:\pestpcbsrv\HPCHEM1\FID\_B\Data\FB013025\  
 Data File : FB031386.D  
 Signal(s) : FID2B.CH  
 Acq On : 30 Jan 2025 12:00  
 Operator : YP/AJ  
 Sample : Q1216-01  
 Misc : 5.01G/5.00 ML DI WATER  
 ALS Vial : 6 Sample Multiplier: 1

Instrument :  
 FID\_B  
 ClientSampleId :

Integration File: Calibration.e  
 Quant Time: Jan 31 00:55:24 2025  
 Quant Method : Z:\pestpcbsrv\HPCHEM1\FID\_B\Method\FB011525.M  
 Quant Title :  
 QLast Update : Wed Jan 15 12:01:08 2025  
 Response via : Initial Calibration  
 Integrator: ChemStation

Volume Inj. : 5 g/ml  
 Signal Phase : RTX-502.2  
 Signal Info : 60mx0.53mmx3.00um

Compound	R.T.	Response	Conc Units
-----			
System Monitoring Compounds			
5) s AAA-TFT	8.790	272347	11.418 ng/ml
Target Compounds			
9) t O-Xylene	13.968	2568	0.072 ng/ml
-----			

(f)=RT Delta > 1/2 Window

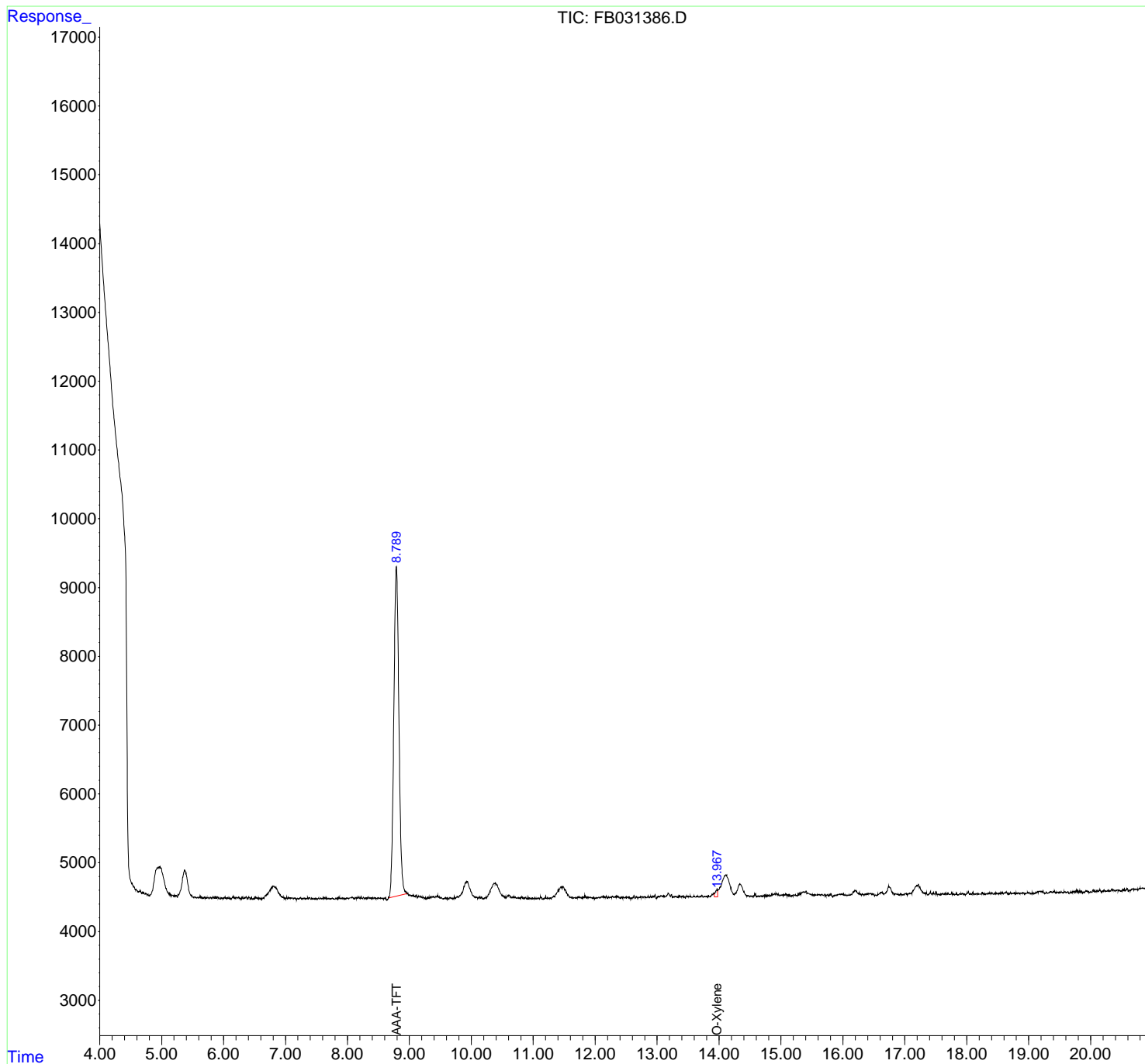
(m)=manual int.

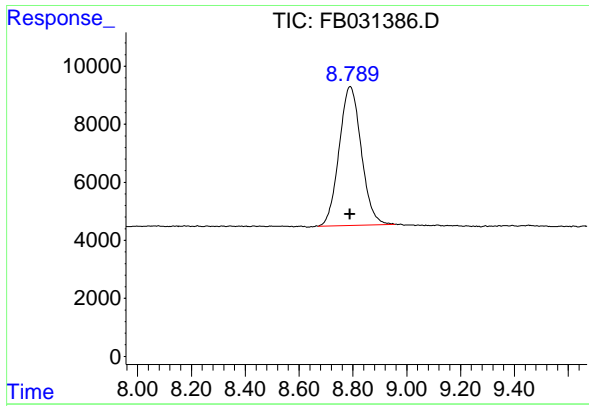
Data Path : Z:\pestpcbsrv\HPCHEM1\FID\_B\Data\FB013025\  
 Data File : FB031386.D  
 Signal(s) : FID2B.CH  
 Acq On : 30 Jan 2025 12:00  
 Operator : YP/AJ  
 Sample : Q1216-01  
 Misc : 5.01G/5.00 ML DI WATER  
 ALS Vial : 6 Sample Multiplier: 1

Instrument :  
 FID\_B  
 ClientSampleId :

Integration File: Calibration.e  
 Quant Time: Jan 31 00:55:24 2025  
 Quant Method : Z:\pestpcbsrv\HPCHEM1\FID\_B\Method\FB011525.M  
 Quant Title :  
 QLast Update : Wed Jan 15 12:01:08 2025  
 Response via : Initial Calibration  
 Integrator: ChemStation

Volume Inj. : 5 g/ml  
 Signal Phase : RTX-502.2  
 Signal Info : 60mx0.53mmx3.00um

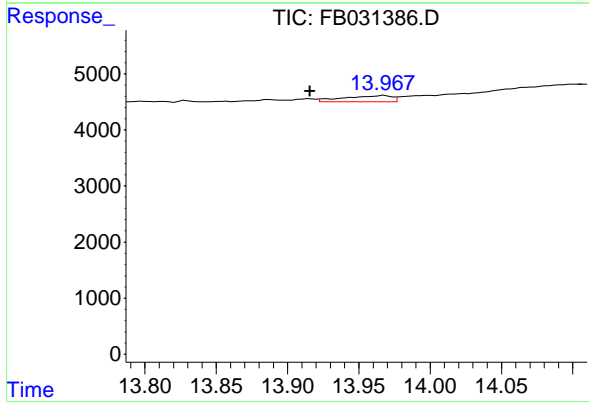




#5 AAA-TFT

R.T.: 8.790 min  
 Delta R.T.: 0.000 min  
 Response: 272347  
 Conc: 11.42 ng/ml

Instrument :  
 FID\_B  
 ClientSampleId :



#9 O-Xylene

R.T.: 13.968 min  
 Delta R.T.: 0.052 min  
 Response: 2568  
 Conc: 0.07 ng/ml