

Data Path : Z:\pestpcbsrv\HPCHEM1\FID_B\Data\FB020519\
 Data File : FB019626.D
 Signal(s) : FID2B.CH
 Acq On : 5 Feb 2019 13:35
 Operator : MJ/SJ
 Sample : K1341-05
 Misc : 5.02g/5.00ml DI WATER
 ALS Vial : 11 Sample Multiplier: 1

Integration File: Calibration.e
 Quant Time: Feb 06 04:00:54 2019
 Quant Method : Z:\pestpcbsrv\HPCHEM1\FID_B\Method\FB012919.M
 Quant Title :
 QLast Update : Tue Jan 29 12:07:12 2019
 Response via : Initial Calibration
 Integrator: ChemStation

Volume Inj. : 5 g/ml
 Signal Phase : RTX-502.2
 Signal Info : 60mx0.53mmx3.00um

Compound	R.T.	Response	Conc Units

System Monitoring Compounds			
5) s AAA-TFT	9.045	206036	17.626 ng/ml
Target Compounds			
6) t Toluene	10.890	18844	1.077 ng/ml
7) t Ethylbenzene	13.338	45354	2.067 ng/ml
8) t m-Xylene	13.475	161852	7.072 ng/ml
9) t O-Xylene	14.210	96350	4.314 ng/ml
10) t 1,2,4-Trimethylbenzene	16.495	420896	18.165 ng/ml

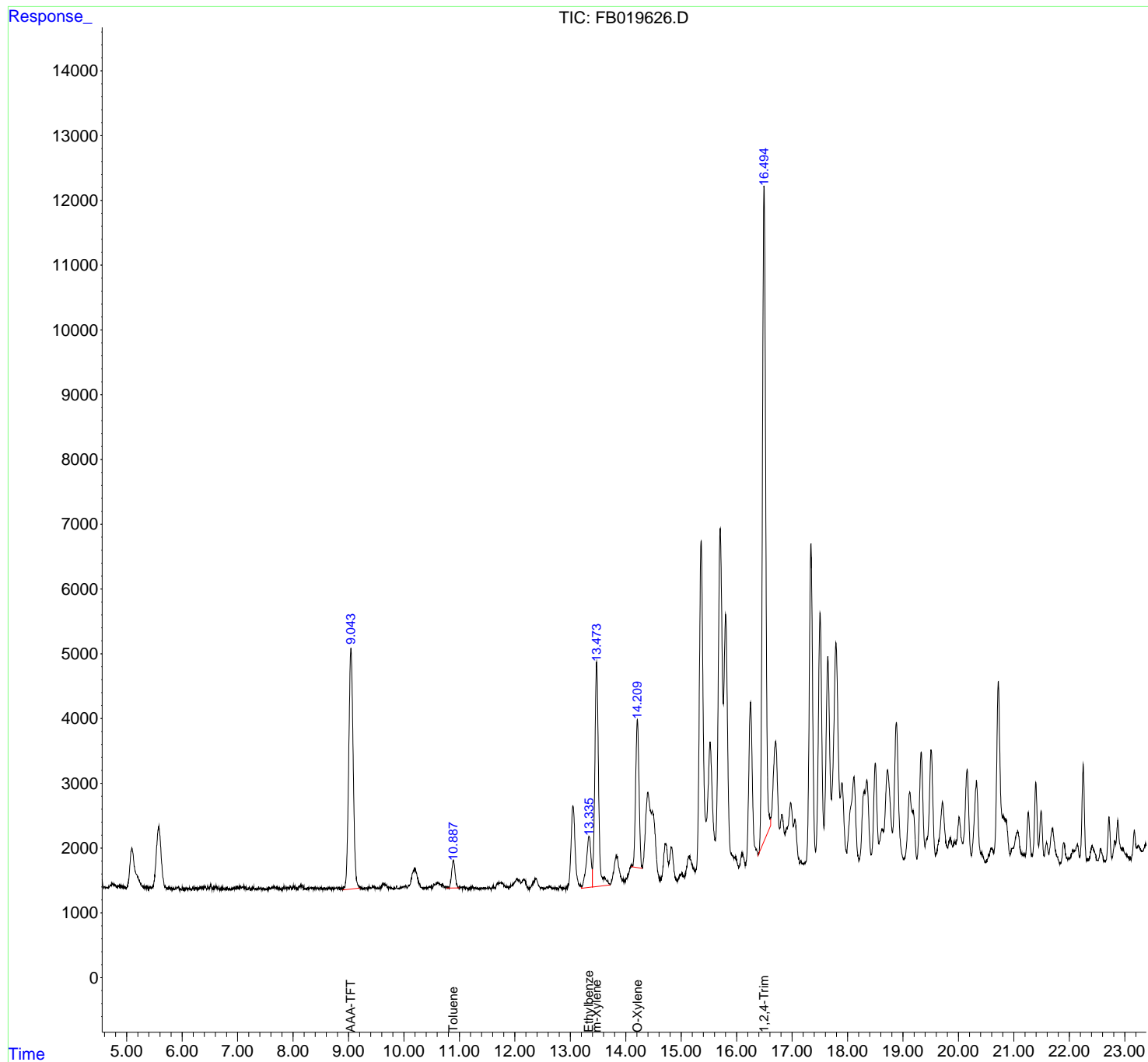
(f)=RT Delta > 1/2 Window

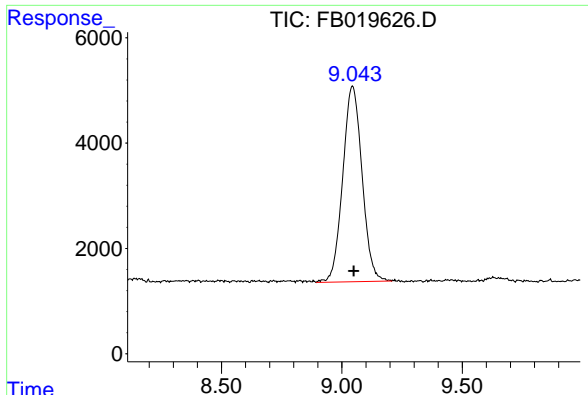
(m)=manual int.

Data Path : Z:\pestpcbsrv\HPCHEM1\FID_B\Data\FB020519\
Data File : FB019626.D
Signal(s) : FID2B.CH
Acq On : 5 Feb 2019 13:35
Operator : MJ/SJ
Sample : K1341-05
Misc : 5.02g/5.00ml DI WATER
ALS Vial : 11 Sample Multiplier: 1

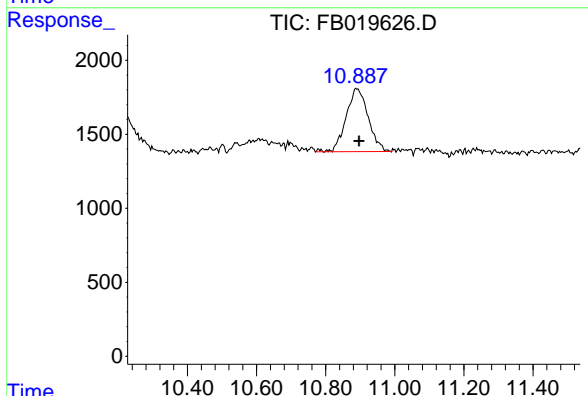
Integration File: Calibration.e
Quant Time: Feb 06 04:00:54 2019
Quant Method : Z:\pestpcbsrv\HPCHEM1\FID_B\Method\FB012919.M
Quant Title :
QLast Update : Tue Jan 29 12:07:12 2019
Response via : Initial Calibration
Integrator: ChemStation

Volume Inj. : 5 g/ml
Signal Phase : RTX-502.2
Signal Info : 60mx0.53mmx3.00um

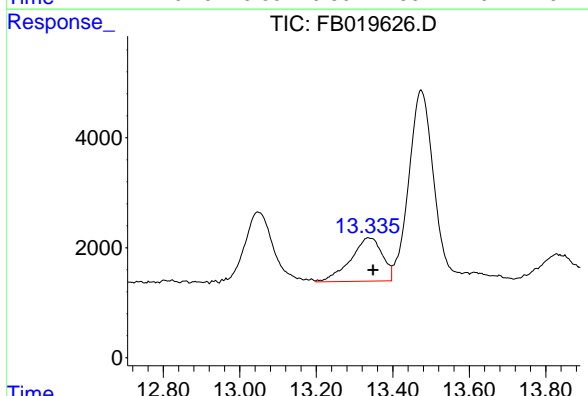




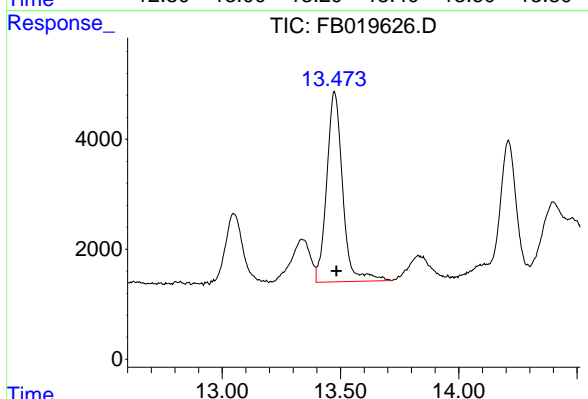
#5 AAA-TFT
 R.T.: 9.045 min
 Delta R.T.: -0.005 min
 Response: 206036
 Conc: 17.63 ng/ml



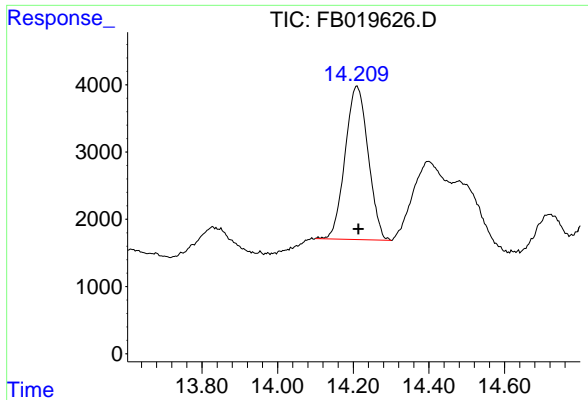
#6 Toluene
 R.T.: 10.890 min
 Delta R.T.: -0.007 min
 Response: 18844
 Conc: 1.08 ng/ml



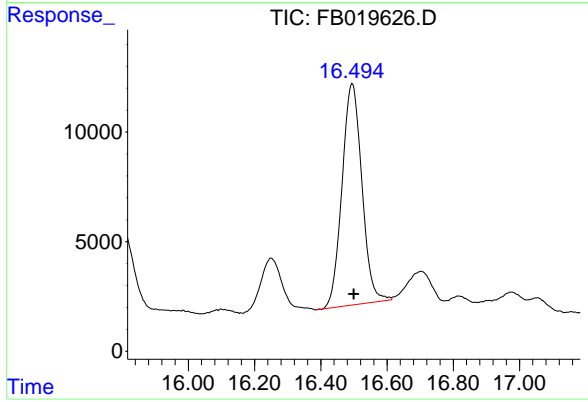
#7 Ethylbenzene
 R.T.: 13.338 min
 Delta R.T.: -0.010 min
 Response: 45354
 Conc: 2.07 ng/ml



#8 m-Xylene
 R.T.: 13.475 min
 Delta R.T.: -0.007 min
 Response: 161852
 Conc: 7.07 ng/ml



#9 O-Xylene
R.T.: 14.210 min
Delta R.T.: -0.004 min
Response: 96350
Conc: 4.31 ng/ml



#10 1,2,4-Trimethylbenzene
R.T.: 16.495 min
Delta R.T.: -0.005 min
Response: 420896
Conc: 18.17 ng/ml