

Data Path : Z:\pestpcbsrv\HPCHEM1\FID_B\Data\FB021122\
 Data File : FB026616.D
 Signal(s) : FID2B.CH
 Acq On : 11 Feb 2022 11:52
 Operator : AJ/MA
 Sample : 100 GRO STD
 Misc :
 ALS Vial : 5 Sample Multiplier: 1

Instrument :
 FID_B
 ClientSampleId :

Integration File: Calibration.e
 Quant Time: Feb 11 12:14:06 2022
 Quant Method : Z:\pestpcbsrv\HPCHEM1\FID_B\Method\FB021122.M
 Quant Title :
 QLast Update : Fri Feb 11 12:13:15 2022
 Response via : Initial Calibration
 Integrator: ChemStation

Volume Inj. : 5 g/ml
 Signal Phase : RTX-502.2
 Signal Info : 60mx0.53mmx3.00um

Compound	R.T.	Response	Conc Units

System Monitoring Compounds			
5) s AAA-TFT	8.786	1287913	106.675 ng/ml
Target Compounds			
1) t 2-Methylpentane	4.699	2728281	149.500 ng/ml
2) t 2,2,4-Trimethylpentane	7.436	3105796	152.937 ng/ml
3) t n-Heptane	7.744	1045555	51.045 ng/ml
4) t Benzene	7.881	1215052	51.652 ng/ml
6) t Toluene	10.615	3407932	152.980 ng/ml
7) t Ethylbenzene	13.053	1031878	50.194 ng/ml
8) t m-Xylene	13.186	2040874	99.532 ng/ml
9) t O-Xylene	13.913	1956999	99.028 ng/ml
10) t 1,2,4-Trimethylbenzene	16.188	1889668	95.946 ng/ml

(f)=RT Delta > 1/2 Window

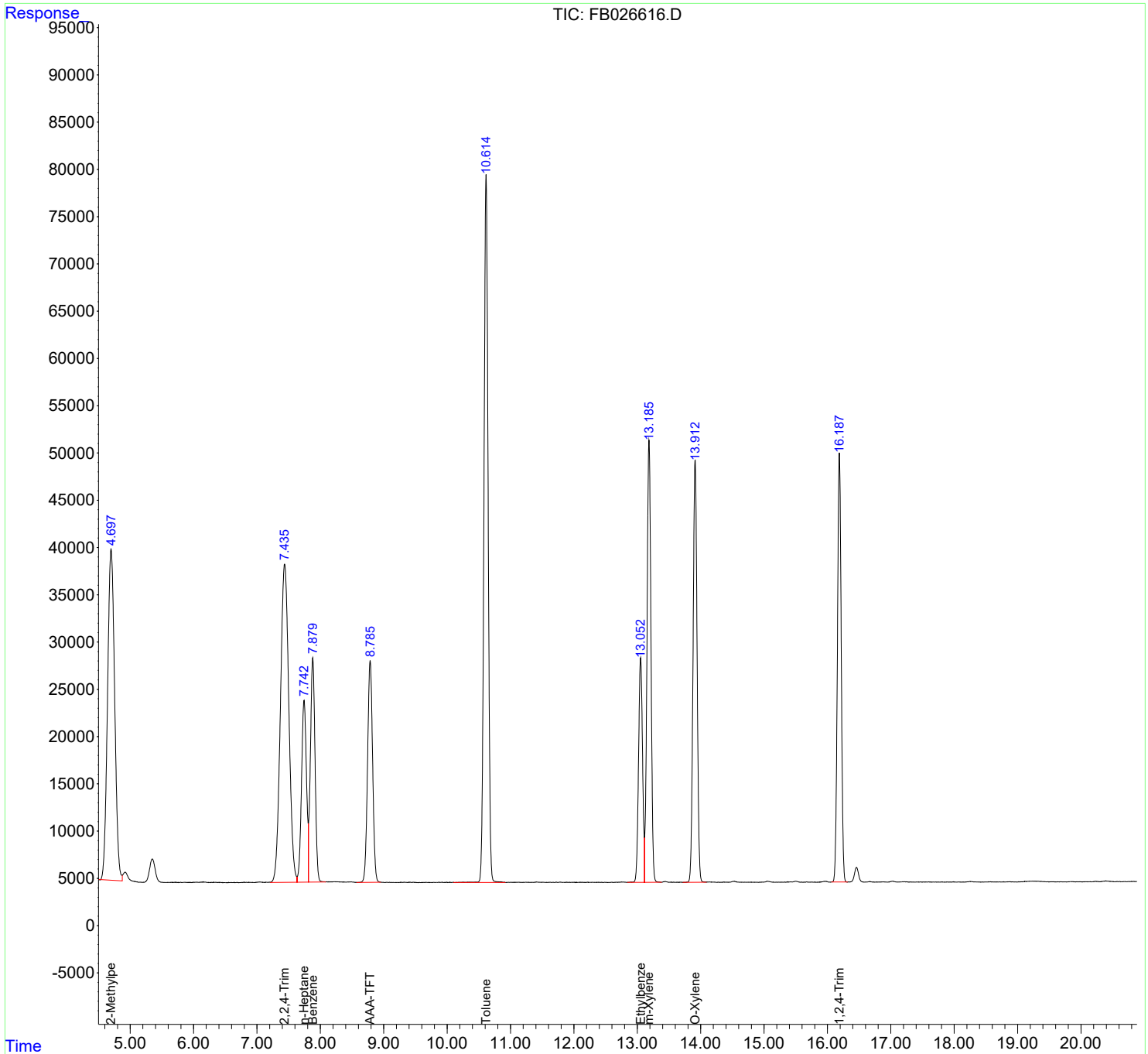
(m)=manual int.

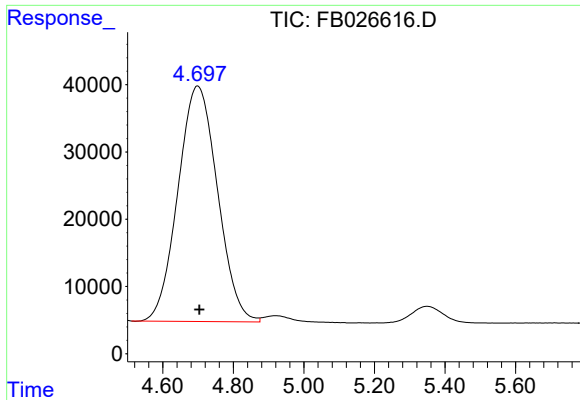
Data Path : Z:\pestpcbsrv\HPCHEM1\FID_B\Data\FB021122\
 Data File : FB026616.D
 Signal(s) : FID2B.CH
 Acq On : 11 Feb 2022 11:52
 Operator : AJ/MA
 Sample : 100 GRO STD
 Misc :
 ALS Vial : 5 Sample Multiplier: 1

Instrument :
 FID_B
 ClientSampleId :

Integration File: Calibration.e
 Quant Time: Feb 11 12:14:06 2022
 Quant Method : Z:\pestpcbsrv\HPCHEM1\FID_B\Method\FB021122.M
 Quant Title :
 QLast Update : Fri Feb 11 12:13:15 2022
 Response via : Initial Calibration
 Integrator: ChemStation

Volume Inj. : 5 g/ml
 Signal Phase : RTX-502.2
 Signal Info : 60mx0.53mmx3.00um

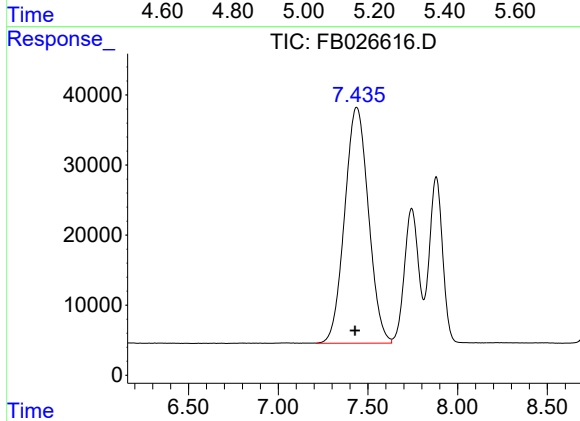




#1 2-Methylpentane

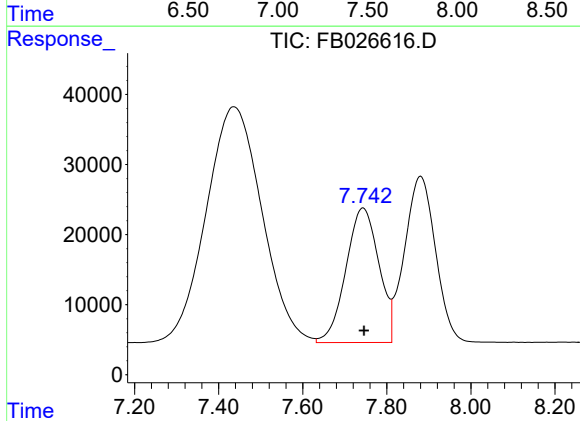
R.T.: 4.699 min
 Delta R.T.: -0.005 min
 Response: 2728281
 Conc: 149.50 ng/ml

Instrument :
 FID_B
 ClientSampleId :



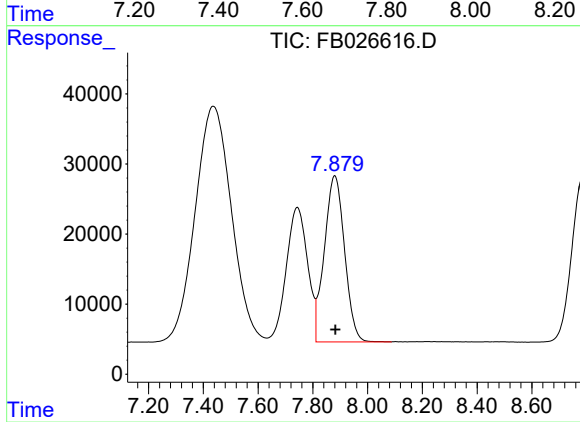
#2 2,2,4-Trimethylpentane

R.T.: 7.436 min
 Delta R.T.: 0.007 min
 Response: 3105796
 Conc: 152.94 ng/ml



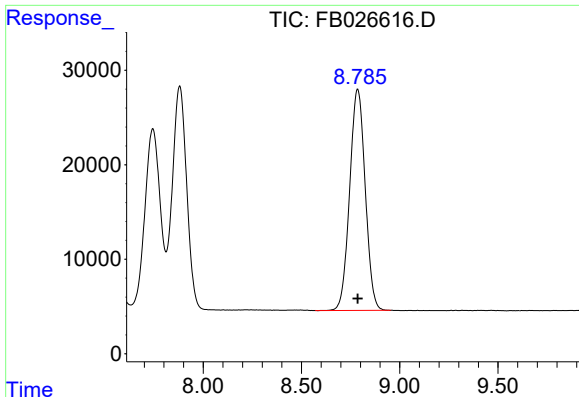
#3 n-Heptane

R.T.: 7.744 min
 Delta R.T.: -0.002 min
 Response: 1045555
 Conc: 51.05 ng/ml



#4 Benzene

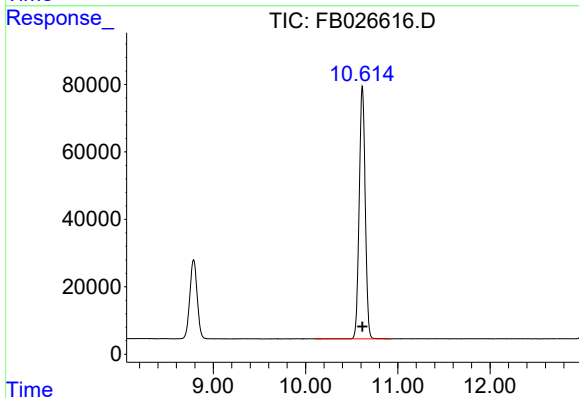
R.T.: 7.881 min
 Delta R.T.: -0.001 min
 Response: 1215052
 Conc: 51.65 ng/ml



#5 AAA-TFT

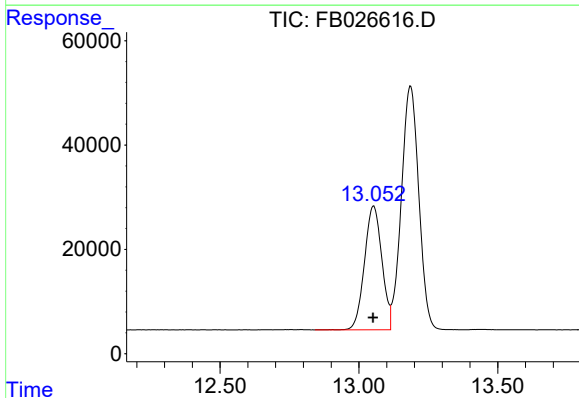
R.T.: 8.786 min
 Delta R.T.: 0.000 min
 Response: 1287913
 Conc: 106.68 ng/ml

Instrument :
 FID_B
 ClientSampleId :



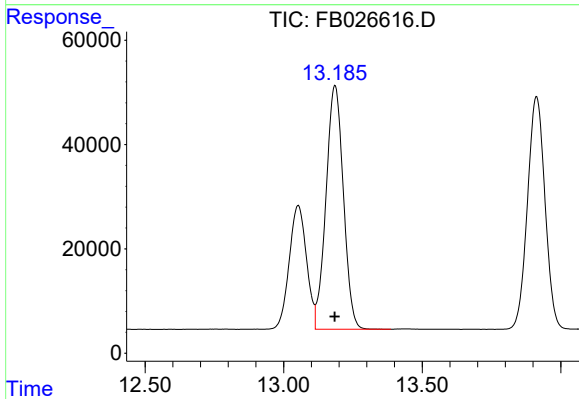
#6 Toluene

R.T.: 10.615 min
 Delta R.T.: 0.000 min
 Response: 3407932
 Conc: 152.98 ng/ml



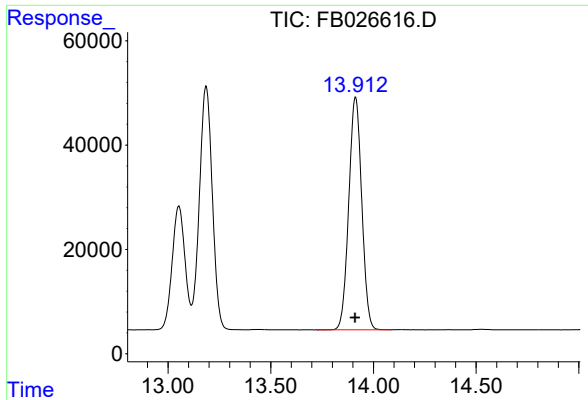
#7 Ethylbenzene

R.T.: 13.053 min
 Delta R.T.: 0.001 min
 Response: 1031878
 Conc: 50.19 ng/ml



#8 m-Xylene

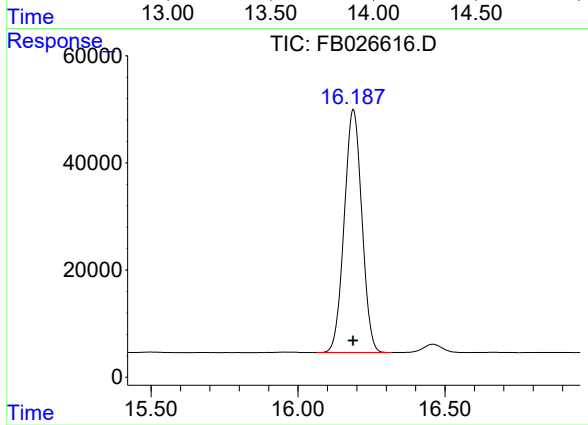
R.T.: 13.186 min
 Delta R.T.: 0.001 min
 Response: 2040874
 Conc: 99.53 ng/ml



#9 O-Xylene

R.T.: 13.913 min
Delta R.T.: 0.001 min
Response: 1956999
Conc: 99.03 ng/ml

Instrument :
FID_B
ClientSampleId :



#10 1,2,4-Trimethylbenzene

R.T.: 16.188 min
Delta R.T.: 0.000 min
Response: 1889668
Conc: 95.95 ng/ml