

Data Path : Z:\pestpcbsrv\HPCHEM1\FID_B\Data\FB021919\
 Data File : FB019834.D
 Signal(s) : FID2B.CH
 Acq On : 19 Feb 2019 13:51
 Operator : MJ/SJ
 Sample : K1527-02MSD
 Misc : 5.04g/5.00ml DI WATER
 ALS Vial : 6 Sample Multiplier: 1

Integration File: Calibration.e
 Quant Time: Feb 20 00:32:06 2019
 Quant Method : Z:\pestpcbsrv\HPCHEM1\FID_B\Method\FB012919.M
 Quant Title :
 QLast Update : Tue Jan 29 12:07:12 2019
 Response via : Initial Calibration
 Integrator: ChemStation

Volume Inj. : 5 g/ml
 Signal Phase : RTX-502.2
 Signal Info : 60mx0.53mmx3.00um

Compound	R.T.	Response	Conc Units

System Monitoring Compounds			
5) s AAA-TFT	9.040	201648	17.250 ng/ml
Target Compounds			
1) t 2-Methylpentane	4.895	523611	30.244 ng/ml
2) t 2,2,4-Trimethylpentane	7.655	447476	26.983 ng/ml
3) t n-Heptane	7.996	140830	8.739 ng/ml
4) t Benzene	8.133	193957	10.283 ng/ml
6) t Toluene	10.888	498734	28.511 ng/ml
7) t Ethylbenzene	13.339	200340	9.129 ng/ml
8) t m-Xylene	13.472	420213	18.360 ng/ml
9) t O-Xylene	14.204	409915	18.353 ng/ml
10) t 1,2,4-Trimethylbenzene	16.490	412716	17.812 ng/ml

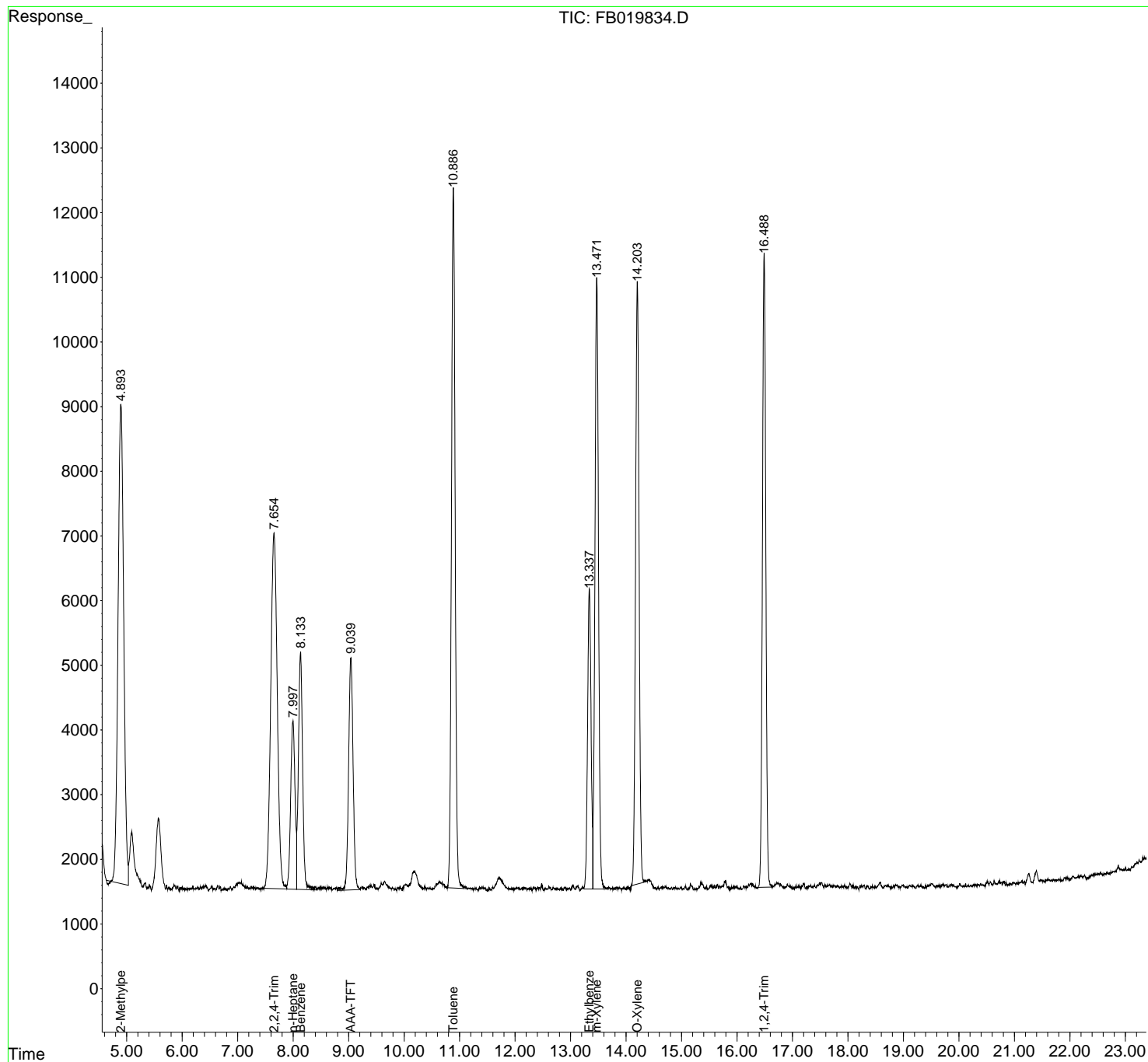
(f)=RT Delta > 1/2 Window

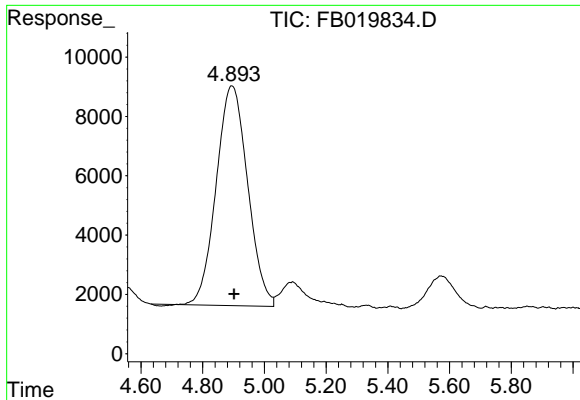
(m)=manual int.

Data Path : Z:\pestpcbsrv\HPCHEM1\FID_B\Data\FB021919\
Data File : FB019834.D
Signal(s) : FID2B.CH
Acq On : 19 Feb 2019 13:51
Operator : MJ/SJ
Sample : K1527-02MSD
Misc : 5.04g/5.00ml DI WATER
ALS Vial : 6 Sample Multiplier: 1

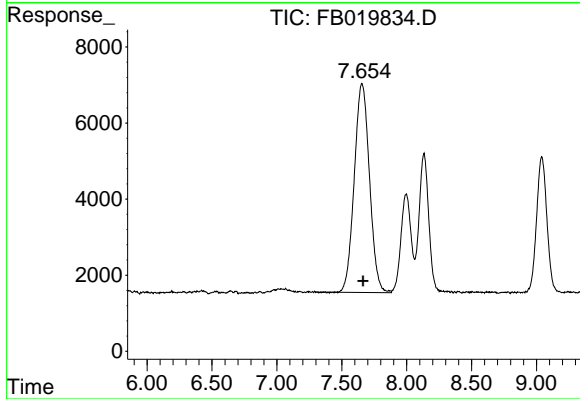
Integration File: Calibration.e
Quant Time: Feb 20 00:32:06 2019
Quant Method : Z:\pestpcbsrv\HPCHEM1\FID_B\Method\FB012919.M
Quant Title :
QLast Update : Tue Jan 29 12:07:12 2019
Response via : Initial Calibration
Integrator: ChemStation

Volume Inj. : 5 g/ml
Signal Phase : RTX-502.2
Signal Info : 60mx0.53mmx3.00um

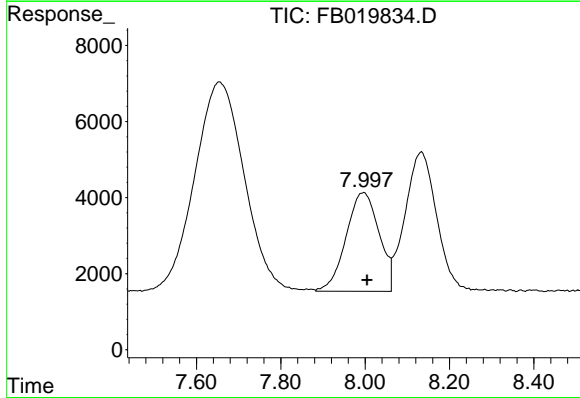




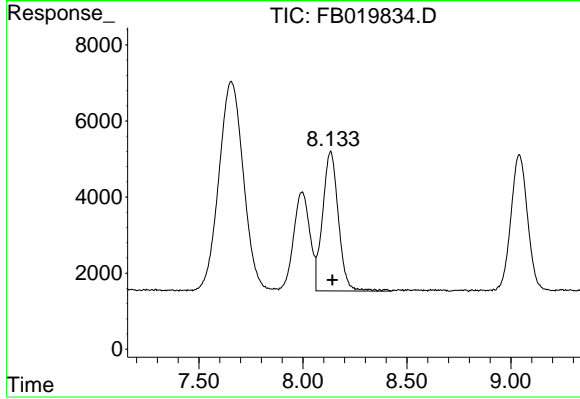
#1 2-Methylpentane
 R.T.: 4.895 min
 Delta R.T.: -0.007 min
 Response: 523611
 Conc: 30.24 ng/ml



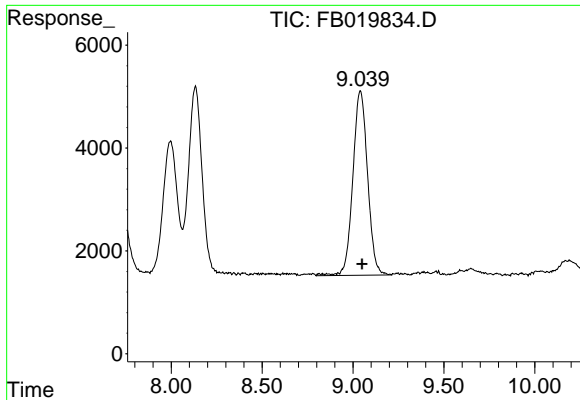
#2 2,2,4-Trimethylpentane
 R.T.: 7.655 min
 Delta R.T.: -0.009 min
 Response: 447476
 Conc: 26.98 ng/ml



#3 n-Heptane
 R.T.: 7.996 min
 Delta R.T.: -0.009 min
 Response: 140830
 Conc: 8.74 ng/ml

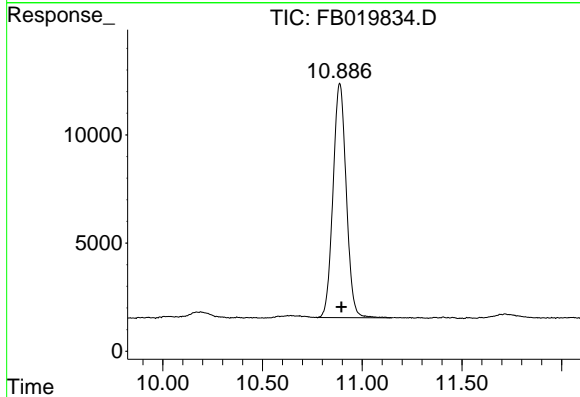


#4 Benzene
 R.T.: 8.133 min
 Delta R.T.: -0.008 min
 Response: 193957
 Conc: 10.28 ng/ml



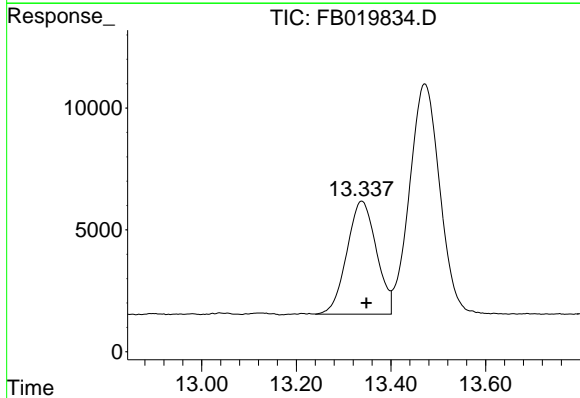
#5 AAA-TFT

R.T.: 9.040 min
 Delta R.T.: -0.009 min
 Response: 201648
 Conc: 17.25 ng/ml



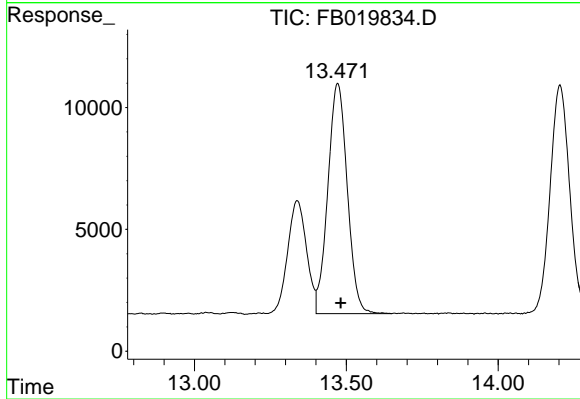
#6 Toluene

R.T.: 10.888 min
 Delta R.T.: -0.009 min
 Response: 498734
 Conc: 28.51 ng/ml



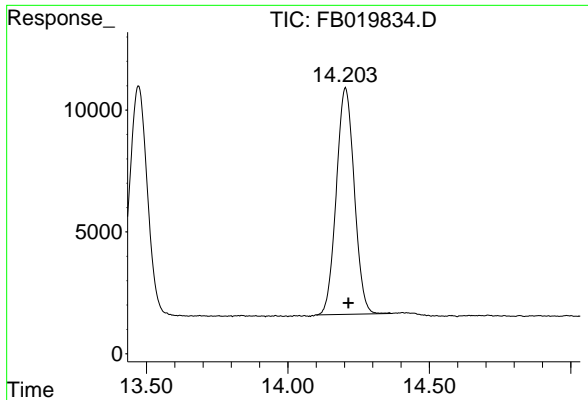
#7 Ethylbenzene

R.T.: 13.339 min
 Delta R.T.: -0.010 min
 Response: 200340
 Conc: 9.13 ng/ml

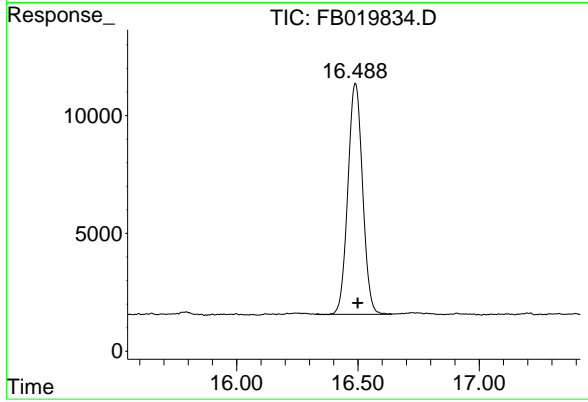


#8 m-Xylene

R.T.: 13.472 min
 Delta R.T.: -0.010 min
 Response: 420213
 Conc: 18.36 ng/ml



#9 O-Xylene
R.T.: 14.204 min
Delta R.T.: -0.010 min
Response: 409915
Conc: 18.35 ng/ml



#10 1,2,4-Trimethylbenzene
R.T.: 16.490 min
Delta R.T.: -0.010 min
Response: 412716
Conc: 17.81 ng/ml