

Data Path : Z:\pestpcbsrv\HPCHEM1\FID_B\Data\FB022520\
 Data File : FB023719.D
 Signal(s) : FID2B.CH
 Acq On : 25 Feb 2020 13:23
 Operator : DD/AJ
 Sample : L1367-06
 Misc : 5.02g/5.00ml DI WATER
 ALS Vial : 4 Sample Multiplier: 1

Integration File: Calibration.e
 Quant Time: Feb 26 00:20:00 2020
 Quant Method : Z:\pestpcbsrv\HPCHEM1\FID_B\Method\FB020620.M
 Quant Title :
 QLast Update : Thu Feb 06 11:13:47 2020
 Response via : Initial Calibration
 Integrator: ChemStation

Volume Inj. : 5 g/ml
 Signal Phase : RTX-502.2
 Signal Info : 60mx0.53mmx3.00um

Compound	R.T.	Response	Conc Units

System Monitoring Compounds			
5) s AAA-TFT	8.800	379917	18.660 ng/ml
Target Compounds			
1) t 2-Methylpentane	4.690	3534	0.117 ng/ml
6) t Toluene	10.630	9430	0.238 ng/ml
8) t m-Xylene	13.203	6738	0.189 ng/ml
9) t O-Xylene	13.940	5687	0.165 ng/ml
10) t 1,2,4-Trimethylbenzene	16.209	4525	0.155 ng/ml

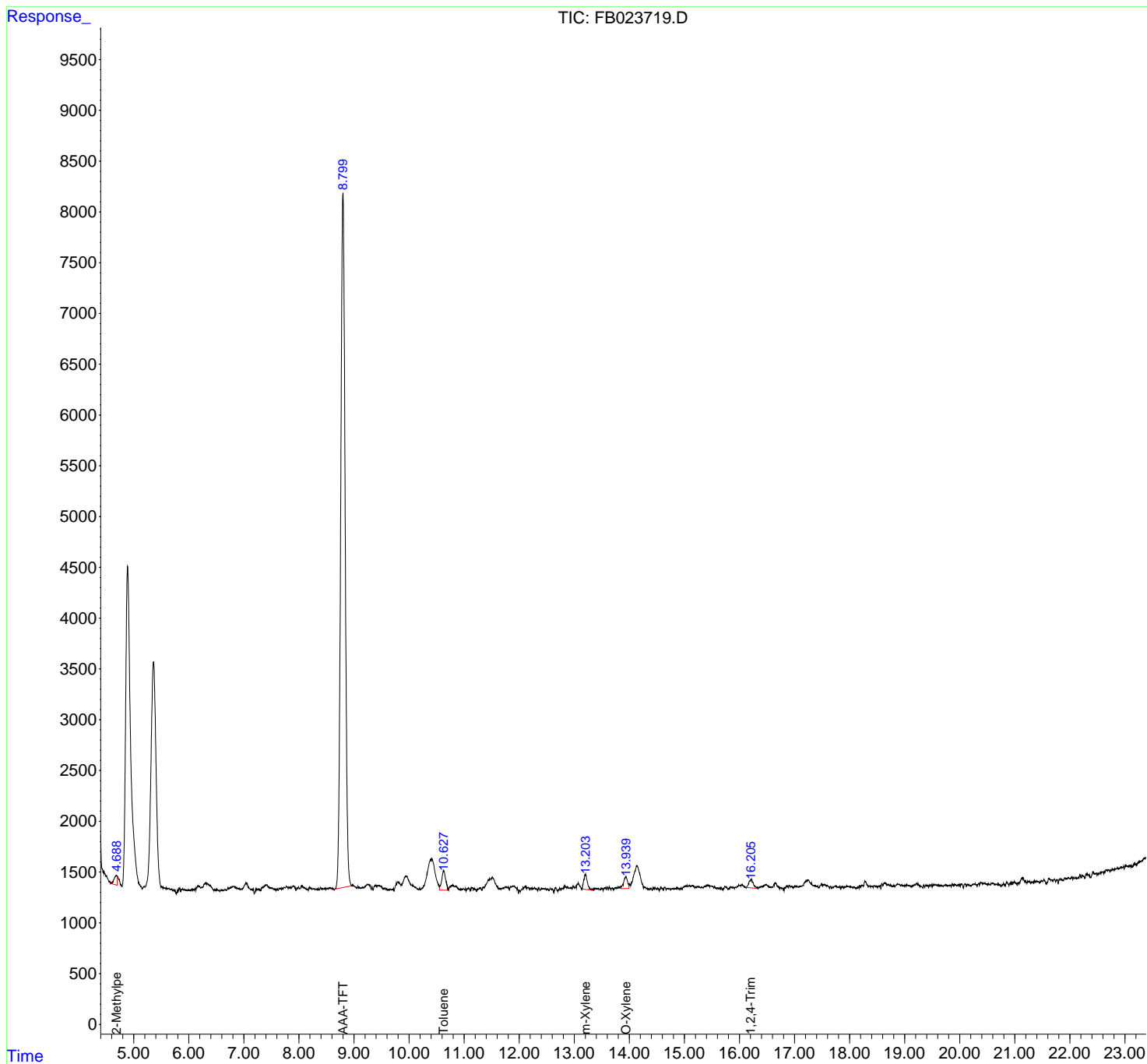
(f)=RT Delta > 1/2 Window

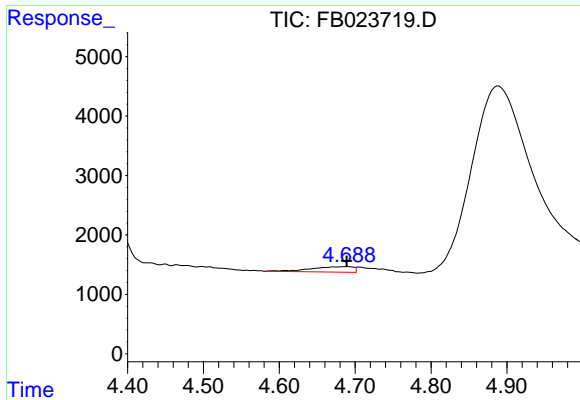
(m)=manual int.

Data Path : Z:\pestpcbsrv\HPCHEM1\FID_B\Data\FB022520\
 Data File : FB023719.D
 Signal(s) : FID2B.CH
 Acq On : 25 Feb 2020 13:23
 Operator : DD/AJ
 Sample : L1367-06
 Misc : 5.02g/5.00ml DI WATER
 ALS Vial : 4 Sample Multiplier: 1

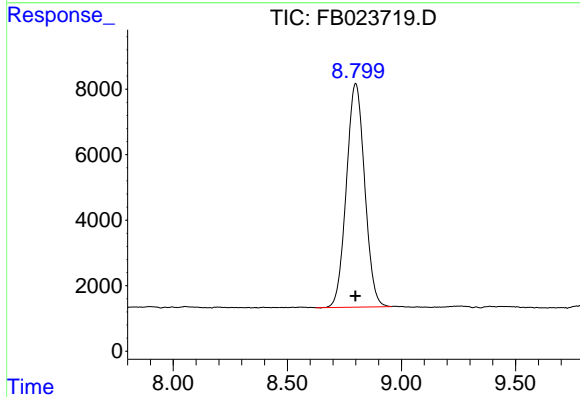
Integration File: Calibration.e
 Quant Time: Feb 26 00:20:00 2020
 Quant Method : Z:\pestpcbsrv\HPCHEM1\FID_B\Method\FB020620.M
 Quant Title :
 QLast Update : Thu Feb 06 11:13:47 2020
 Response via : Initial Calibration
 Integrator: ChemStation

Volume Inj. : 5 g/ml
 Signal Phase : RTX-502.2
 Signal Info : 60mx0.53mmx3.00um

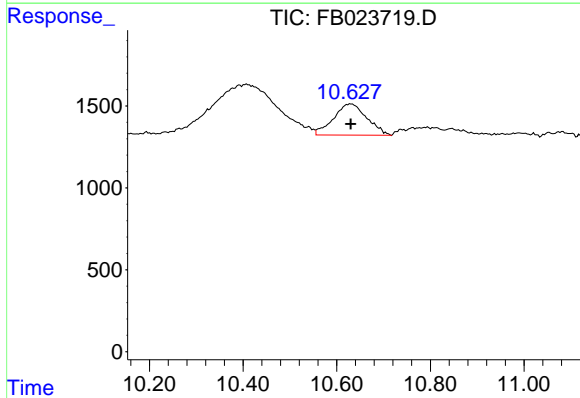




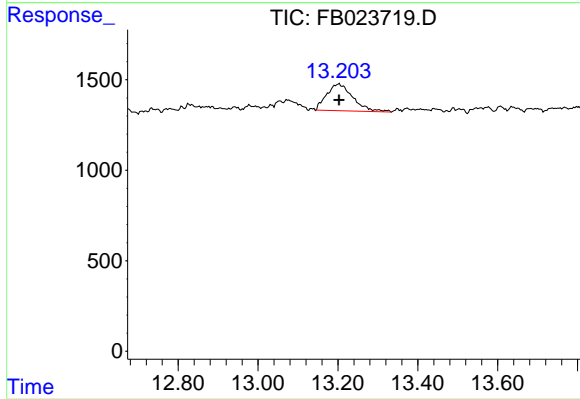
#1 2-Methylpentane
 R.T.: 4.690 min
 Delta R.T.: 0.000 min
 Response: 3534
 Conc: 0.12 ng/ml



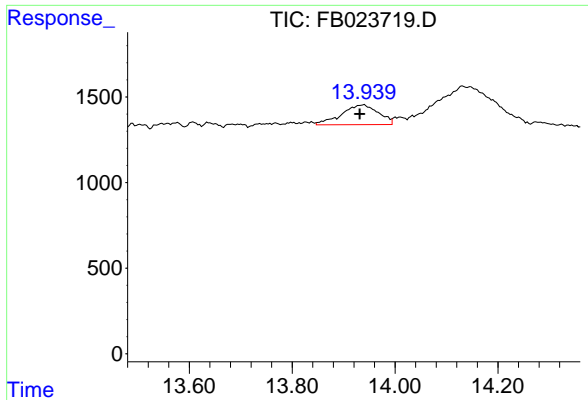
#5 AAA-TFT
 R.T.: 8.800 min
 Delta R.T.: 0.002 min
 Response: 379917
 Conc: 18.66 ng/ml



#6 Toluene
 R.T.: 10.630 min
 Delta R.T.: 0.000 min
 Response: 9430
 Conc: 0.24 ng/ml

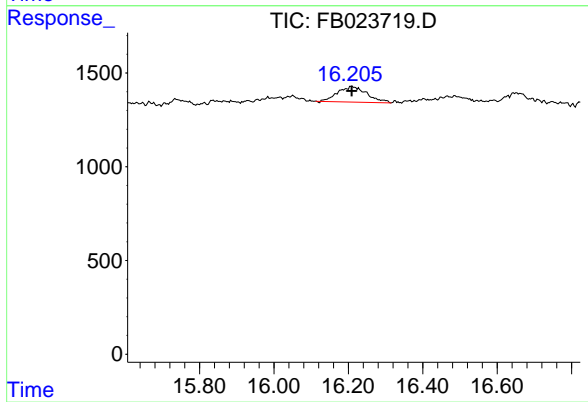


#8 m-Xylene
 R.T.: 13.203 min
 Delta R.T.: 0.000 min
 Response: 6738
 Conc: 0.19 ng/ml



#9 O-Xylene

R.T.: 13.940 min
Delta R.T.: 0.009 min
Response: 5687
Conc: 0.16 ng/ml



#10 1,2,4-Trimethylbenzene

R.T.: 16.209 min
Delta R.T.: 0.000 min
Response: 4525
Conc: 0.15 ng/ml