

Data Path : Z:\pestpcbsrv\HPCHEM1\FID_B\Data\FB022520\
 Data File : FB023720.D
 Signal(s) : FID2B.CH
 Acq On : 25 Feb 2020 13:53
 Operator : DD/AJ
 Sample : L1673-02
 Misc : 5.04g/5.00ml DI WATER
 ALS Vial : 5 Sample Multiplier: 1

Integration File: Calibration.e
 Quant Time: Feb 26 00:20:05 2020
 Quant Method : Z:\pestpcbsrv\HPCHEM1\FID_B\Method\FB020620.M
 Quant Title :
 QLast Update : Thu Feb 06 11:13:47 2020
 Response via : Initial Calibration
 Integrator: ChemStation

Volume Inj. : 5 g/ml
 Signal Phase : RTX-502.2
 Signal Info : 60mx0.53mmx3.00um

Compound	R.T.	Response	Conc Units

System Monitoring Compounds			
5) s AAA-TFT	8.800	446122	21.912 ng/ml
Target Compounds			
1) t 2-Methylpentane	4.670	2229	0.074 ng/ml
6) t Toluene	10.618	1388	0.035 ng/ml
8) t m-Xylene	13.190	869	0.024 ng/ml
9) t O-Xylene	13.948	377	0.011 ng/ml

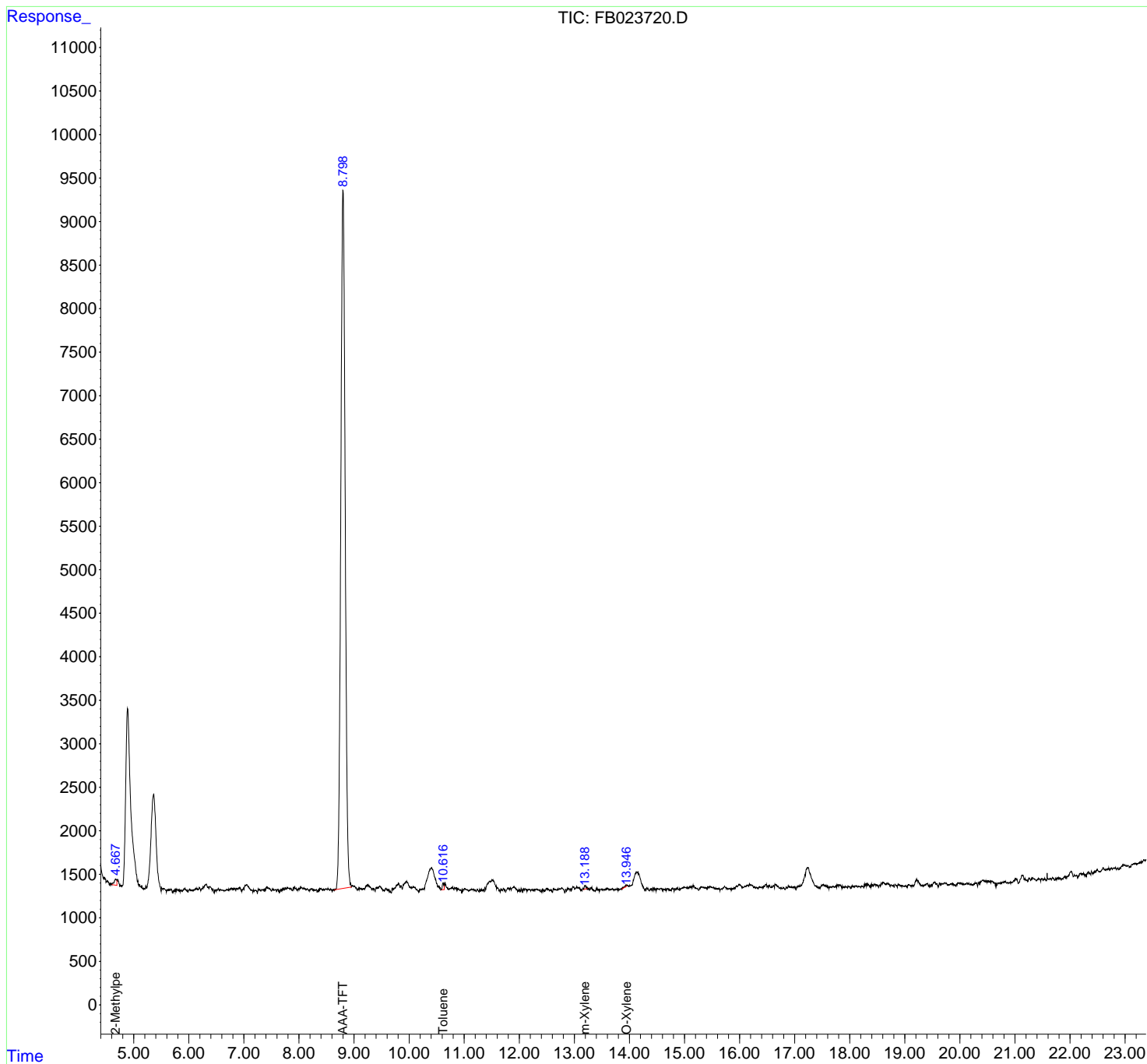
(f)=RT Delta > 1/2 Window

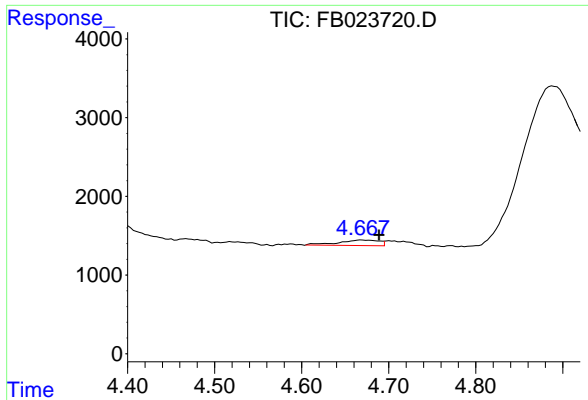
(m)=manual int.

Data Path : Z:\pestpcbsrv\HPCHEM1\FID_B\Data\FB022520\
 Data File : FB023720.D
 Signal(s) : FID2B.CH
 Acq On : 25 Feb 2020 13:53
 Operator : DD/AJ
 Sample : L1673-02
 Misc : 5.04g/5.00ml DI WATER
 ALS Vial : 5 Sample Multiplier: 1

Integration File: Calibration.e
 Quant Time: Feb 26 00:20:05 2020
 Quant Method : Z:\pestpcbsrv\HPCHEM1\FID_B\Method\FB020620.M
 Quant Title :
 QLast Update : Thu Feb 06 11:13:47 2020
 Response via : Initial Calibration
 Integrator: ChemStation

Volume Inj. : 5 g/ml
 Signal Phase : RTX-502.2
 Signal Info : 60mx0.53mmx3.00um





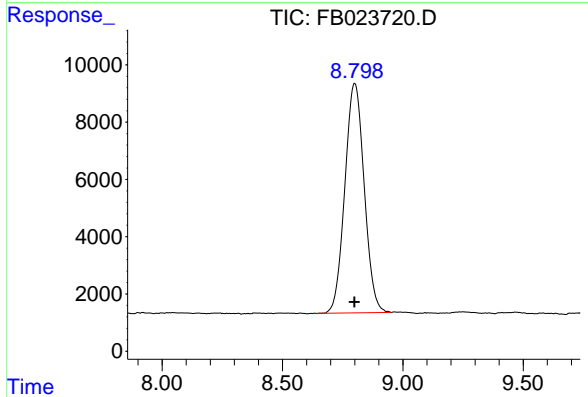
#1 2-Methylpentane

R.T.: 4.670 min

Delta R.T.: -0.019 min

Response: 2229

Conc: 0.07 ng/ml



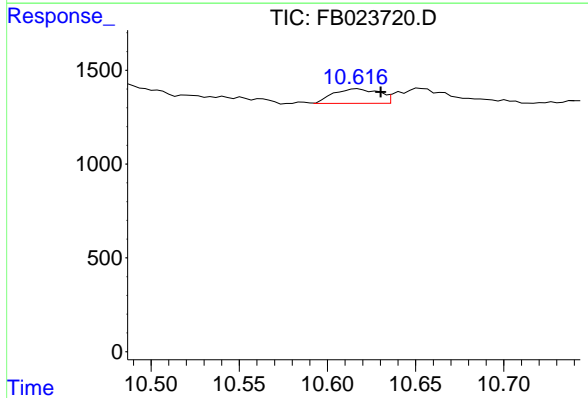
#5 AAA-TFT

R.T.: 8.800 min

Delta R.T.: 0.001 min

Response: 446122

Conc: 21.91 ng/ml



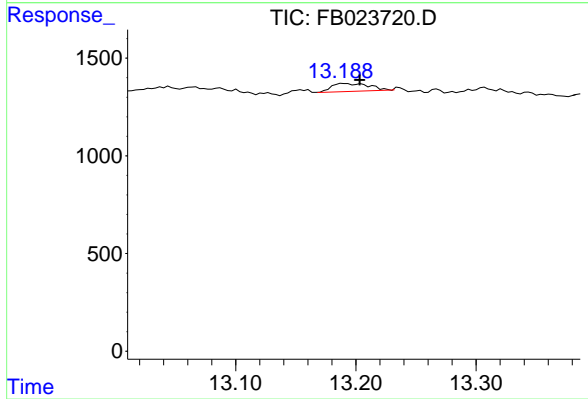
#6 Toluene

R.T.: 10.618 min

Delta R.T.: -0.013 min

Response: 1388

Conc: 0.03 ng/ml



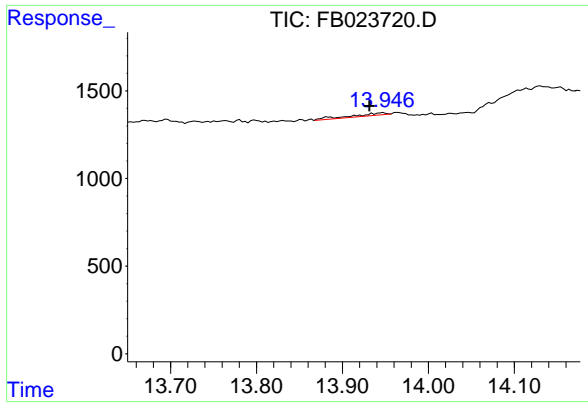
#8 m-Xylene

R.T.: 13.190 min

Delta R.T.: -0.013 min

Response: 869

Conc: 0.02 ng/ml



#9 O-Xylene
R.T.: 13.948 min
Delta R.T.: 0.017 min
Response: 377
Conc: 0.01 ng/ml