

Data Path : Z:\pestpcbsrv\HPCHEM1\FID\_B\Data\FB022819\  
Data File : FB019964.D  
Signal(s) : FID2B.CH  
Acq On : 28 Feb 2019 18:10  
Operator : MJ/SJ  
Sample : K1652-03  
Misc : 5.02g/5.00ml DI WATER  
ALS Vial : 20 Sample Multiplier: 1

Integration File: Calibration.e  
Quant Time: Mar 01 01:17:27 2019  
Quant Method : Z:\pestpcbsrv\HPCHEM1\FID\_B\Method\FB012919.M  
Quant Title :  
QLast Update : Tue Jan 29 12:07:12 2019  
Response via : Initial Calibration  
Integrator: ChemStation

Volume Inj. : 5 g/ml  
Signal Phase : RTX-502.2  
Signal Info : 60mx0.53mmx3.00um

Compound	R.T.	Response	Conc Units
-----			
System Monitoring Compounds			
5) s AAA-TFT	9.042	246591	21.095 ng/ml

Target Compounds

-----

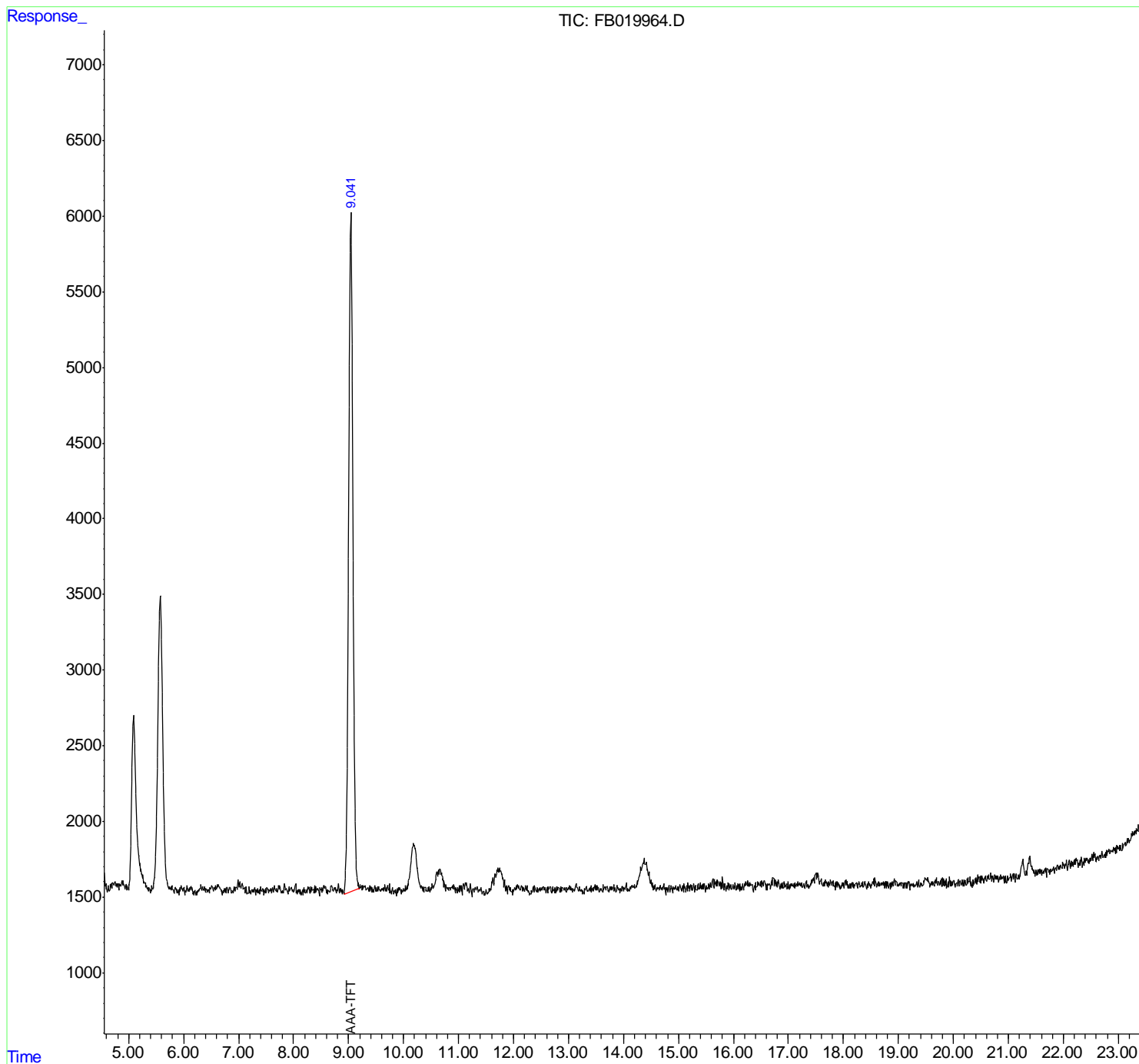
(f)=RT Delta > 1/2 Window

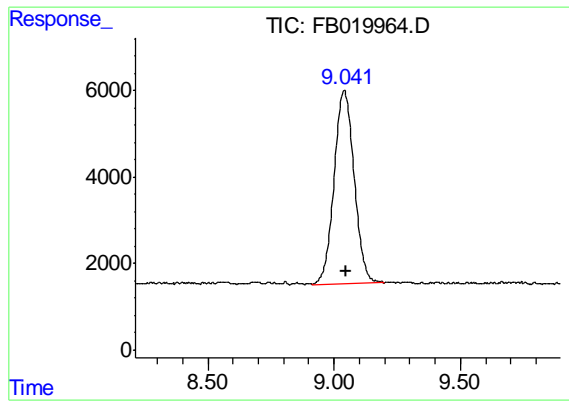
(m)=manual int.

Data Path : Z:\pestpcbsrv\HPCHEM1\FID\_B\Data\FB022819\  
Data File : FB019964.D  
Signal(s) : FID2B.CH  
Acq On : 28 Feb 2019 18:10  
Operator : MJ/SJ  
Sample : K1652-03  
Misc : 5.02g/5.00ml DI WATER  
ALS Vial : 20 Sample Multiplier: 1

Integration File: Calibration.e  
Quant Time: Mar 01 01:17:27 2019  
Quant Method : Z:\pestpcbsrv\HPCHEM1\FID\_B\Method\FB012919.M  
Quant Title :  
QLast Update : Tue Jan 29 12:07:12 2019  
Response via : Initial Calibration  
Integrator: ChemStation

Volume Inj. : 5 g/ml  
Signal Phase : RTX-502.2  
Signal Info : 60mx0.53mmx3.00um





#5 AAA-TFT

R.T.: 9.042 min  
Delta R.T.: -0.008 min  
Response: 246591  
Conc: 21.09 ng/ml