

Data Path : Z:\pestpcbsrv\HPCHEM1\FID\_B\Data\FB030119\  
Data File : FB020021.D  
Signal(s) : FID2B.CH  
Acq On : 2 Mar 2019 5:02  
Operator : MJ/SJ  
Sample : K1675-39  
Misc : 5.04g/5.00ml DI WATER  
ALS Vial : 37 Sample Multiplier: 1

Integration File: Calibration.e  
Quant Time: Mar 02 06:09:29 2019  
Quant Method : Z:\pestpcbsrv\HPCHEM1\FID\_B\Method\FB030119.M  
Quant Title :  
QLast Update : Fri Mar 01 06:28:25 2019  
Response via : Initial Calibration  
Integrator: ChemStation

Volume Inj. : 5 g/ml  
Signal Phase : RTX-502.2  
Signal Info : 60mx0.53mmx3.00um

| Compound                    | R.T.  | Response | Conc Units   |
|-----------------------------|-------|----------|--------------|
| -----                       |       |          |              |
| System Monitoring Compounds |       |          |              |
| 5) s AAA-TFT                | 9.040 | 204204   | 18.222 ng/ml |

Target Compounds

-----

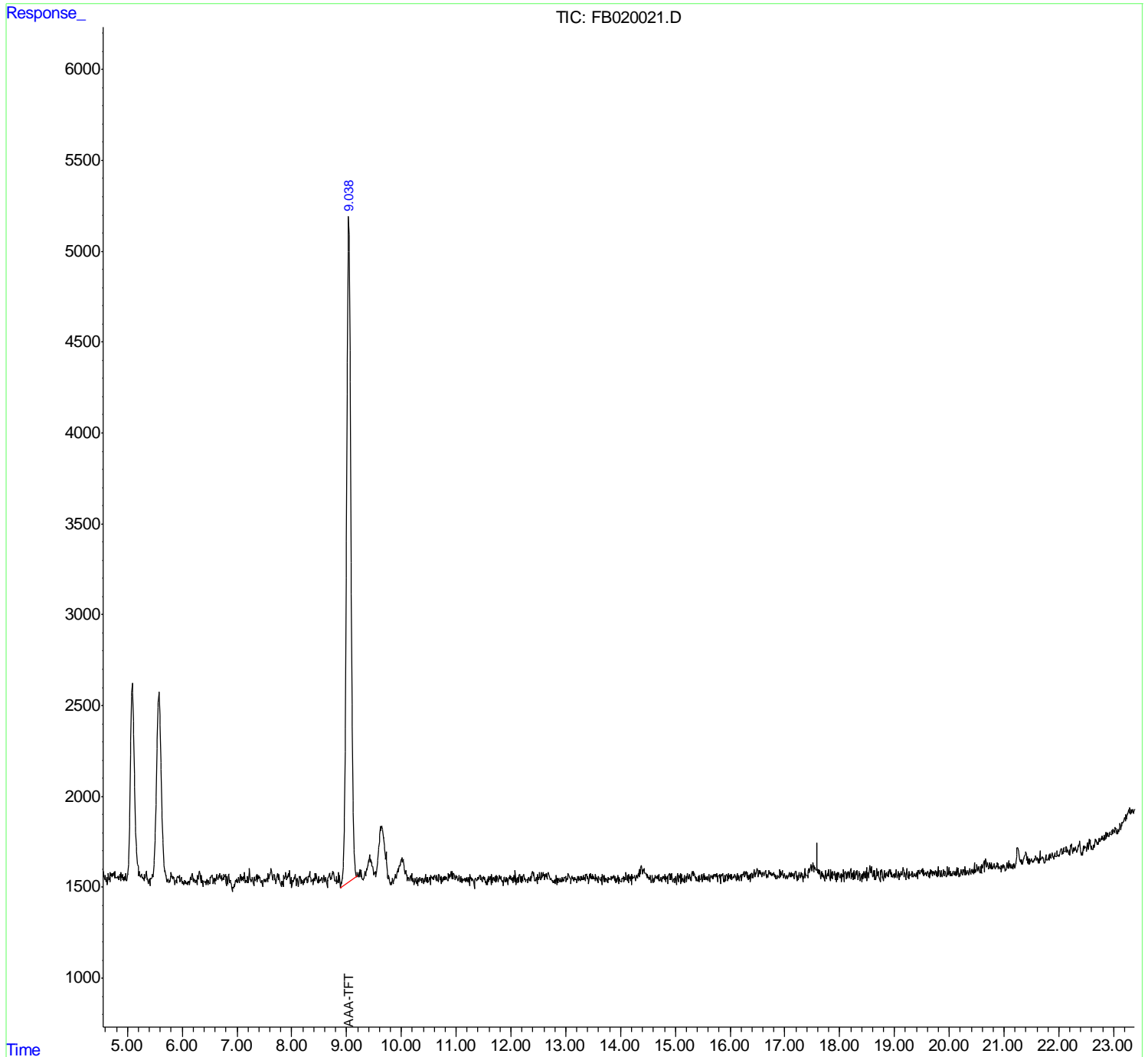
(f)=RT Delta > 1/2 Window

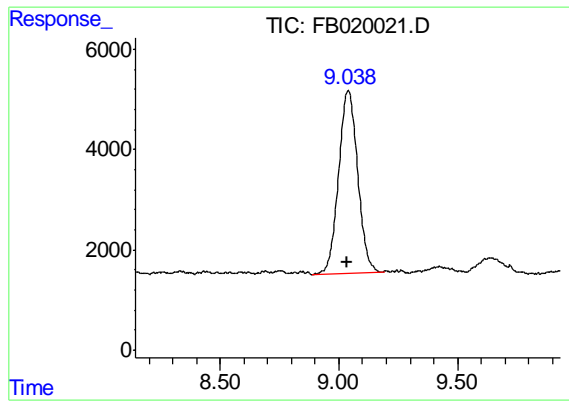
(m)=manual int.

Data Path : Z:\pestpcbsrv\HPCHEM1\FID\_B\Data\FB030119\  
 Data File : FB020021.D  
 Signal(s) : FID2B.CH  
 Acq On : 2 Mar 2019 5:02  
 Operator : MJ/SJ  
 Sample : K1675-39  
 Misc : 5.04g/5.00ml DI WATER  
 ALS Vial : 37 Sample Multiplier: 1

Integration File: Calibration.e  
 Quant Time: Mar 02 06:09:29 2019  
 Quant Method : Z:\pestpcbsrv\HPCHEM1\FID\_B\Method\FB030119.M  
 Quant Title :  
 QLast Update : Fri Mar 01 06:28:25 2019  
 Response via : Initial Calibration  
 Integrator: ChemStation

Volume Inj. : 5 g/ml  
 Signal Phase : RTX-502.2  
 Signal Info : 60mx0.53mmx3.00um





#5 AAA-TFT

R.T.: 9.040 min  
Delta R.T.: 0.004 min  
Response: 204204  
Conc: 18.22 ng/ml