

Data Path : Z:\pestpcbsrv\HPCHEM1\FID_B\Data\FB030821\
Data File : FB025509.D
Signal(s) : FID2B.CH
Acq On : 8 Mar 2021 16:49
Operator : DD/AJ
Sample : M1575-04
Misc :
ALS Vial : 17 Sample Multiplier: 1

Instrument :
FID_B
ClientSampleId :
IDW-GW806-AQ-030321

Integration File: Calibration.e
Quant Time: Mar 09 01:10:23 2021
Quant Method : Z:\pestpcbsrv\HPCHEM1\FID_B\Method\FB021921.M
Quant Title :
QLast Update : Mon Feb 22 11:51:04 2021
Response via : Initial Calibration
Integrator: ChemStation

Volume Inj. : 5 g/ml
Signal Phase : RTX-502.2
Signal Info : 60mx0.53mmx3.00um

Compound	R.T.	Response	Conc Units

System Monitoring Compounds			
5) s AAA-TFT	8.801	374354	14.759 ng/ml
Target Compounds			

(f)=RT Delta > 1/2 Window

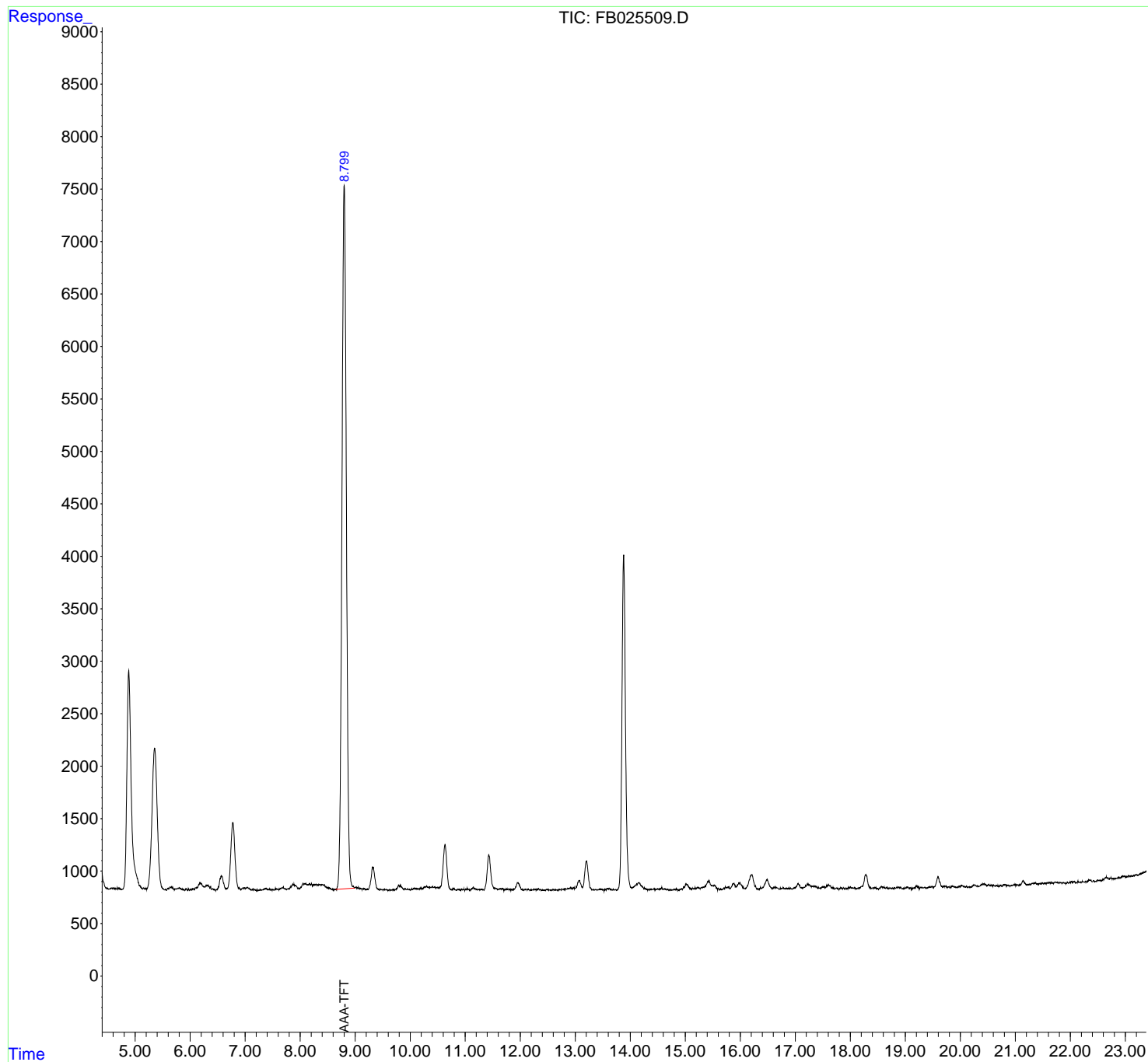
(m)=manual int.

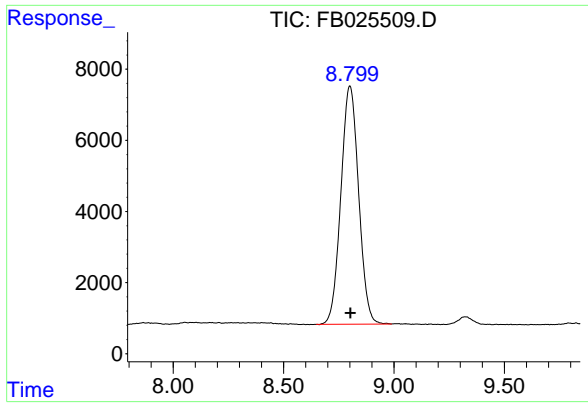
Data Path : Z:\pestpcbsrv\HPCHEM1\FID_B\Data\FB030821\
Data File : FB025509.D
Signal(s) : FID2B.CH
Acq On : 8 Mar 2021 16:49
Operator : DD/AJ
Sample : M1575-04
Misc :
ALS Vial : 17 Sample Multiplier: 1

Instrument :
FID_B
ClientSampleId :
IDW-GW806-AQ-030321

Integration File: Calibration.e
Quant Time: Mar 09 01:10:23 2021
Quant Method : Z:\pestpcbsrv\HPCHEM1\FID_B\Method\FB021921.M
Quant Title :
QLast Update : Mon Feb 22 11:51:04 2021
Response via : Initial Calibration
Integrator: ChemStation

Volume Inj. : 5 g/ml
Signal Phase : RTX-502.2
Signal Info : 60mx0.53mmx3.00um





#5 AAA-TFT

R.T.: 8.801 min
Delta R.T.: -0.002 min
Response: 374354
Conc: 14.76 ng/ml

Instrument :
FID_B
ClientSampled :
IDW-GW806-AQ-030321