

Data Path : Z:\pestpcbsrv\HPCHEM1\FID_B\Data\FB031220\
Data File : FB023909.D
Signal(s) : FID2B.CH
Acq On : 13 Mar 2020 00:32
Operator : DD/AJ
Sample : L1912-15
Misc : 5.03g/5.00ml DI WATER
ALS Vial : 26 Sample Multiplier: 1

Integration File: Calibration.e
Quant Time: Mar 13 03:36:54 2020
Quant Method : Z:\pestpcbsrv\HPCHEM1\FID_B\Method\FB030520.M
Quant Title :
QLast Update : Thu Mar 05 11:03:12 2020
Response via : Initial Calibration
Integrator: ChemStation

Volume Inj. : 5 g/ml
Signal Phase : RTX-502.2
Signal Info : 60mx0.53mmx3.00um

Compound	R.T.	Response	Conc Units

System Monitoring Compounds			
5) s AAA-TFT	8.799	425861	20.230 ng/ml
Target Compounds			
1) t 2-Methylpentane	4.690	1153	0.037 ng/ml
6) t Toluene	10.613	174	0.004 ng/ml

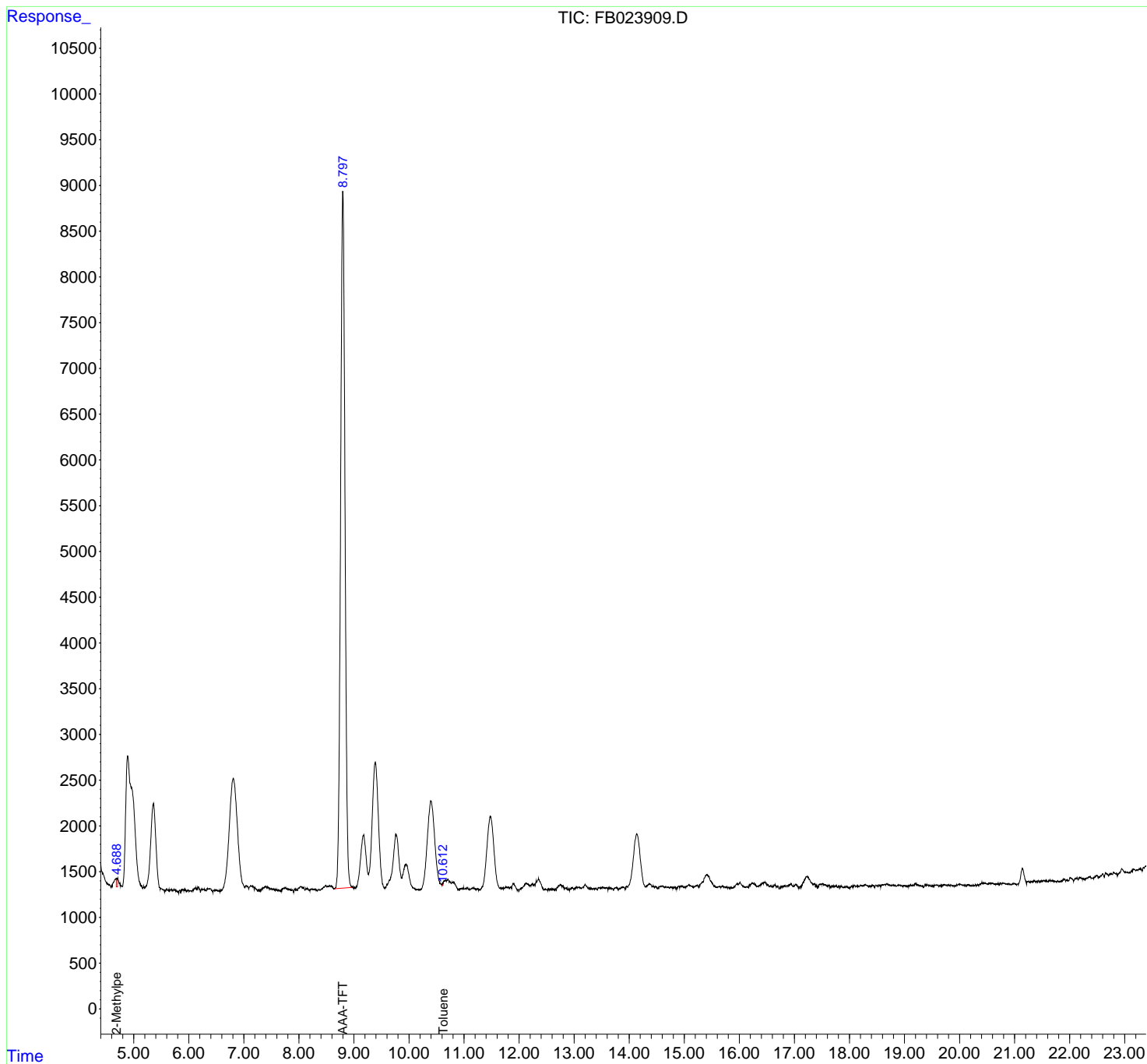
(f)=RT Delta > 1/2 Window

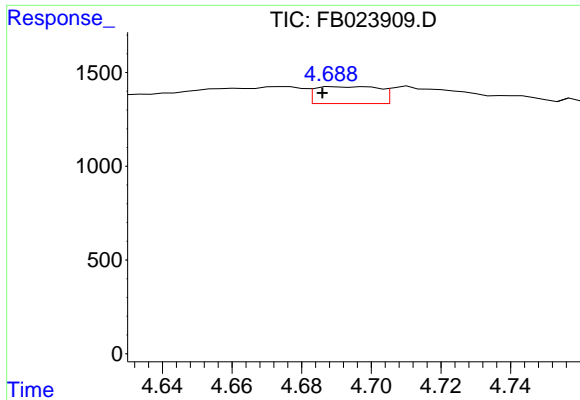
(m)=manual int.

Data Path : Z:\pestpcbsrv\HPCHEM1\FID_B\Data\FB031220\
 Data File : FB023909.D
 Signal(s) : FID2B.CH
 Acq On : 13 Mar 2020 00:32
 Operator : DD/AJ
 Sample : L1912-15
 Misc : 5.03g/5.00ml DI WATER
 ALS Vial : 26 Sample Multiplier: 1

Integration File: Calibration.e
 Quant Time: Mar 13 03:36:54 2020
 Quant Method : Z:\pestpcbsrv\HPCHEM1\FID_B\Method\FB030520.M
 Quant Title :
 QLast Update : Thu Mar 05 11:03:12 2020
 Response via : Initial Calibration
 Integrator: ChemStation

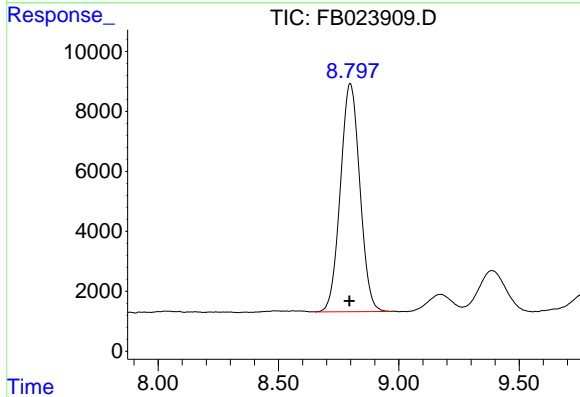
Volume Inj. : 5 g/ml
 Signal Phase : RTX-502.2
 Signal Info : 60mx0.53mmx3.00um





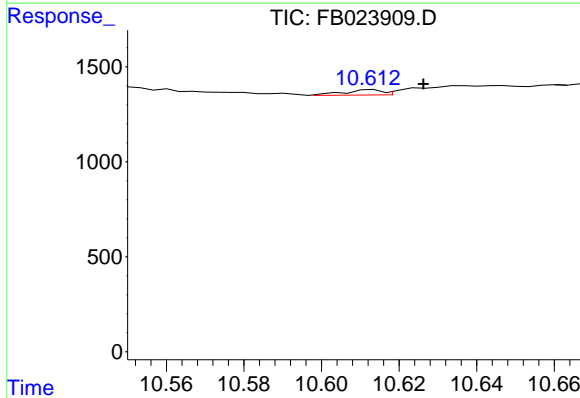
#1 2-Methylpentane

R.T.: 4.690 min
 Delta R.T.: 0.004 min
 Response: 1153
 Conc: 0.04 ng/ml



#5 AAA-TFT

R.T.: 8.799 min
 Delta R.T.: 0.004 min
 Response: 425861
 Conc: 20.23 ng/ml



#6 Toluene

R.T.: 10.613 min
 Delta R.T.: -0.013 min
 Response: 174
 Conc: 0.00 ng/ml