

Data Path : Z:\pestpcbsrv\HPCHEM1\FID_B\Data\FB031225\
 Data File : FB031585.D
 Signal(s) : FID2B.CH
 Acq On : 12 Mar 2025 10:09
 Operator : YP/AJ
 Sample : VBF0312W1
 Misc :
 ALS Vial : 2 Sample Multiplier: 1

Instrument :
 FID_B
 ClientSampleId :
 VBF0312W1

Integration File: Calibration.e
 Quant Time: Mar 13 01:16:11 2025
 Quant Method : Z:\pestpcbsrv\HPCHEM1\FID_B\Method\FB030625.M
 Quant Title :
 QLast Update : Thu Mar 06 13:17:04 2025
 Response via : Initial Calibration
 Integrator: ChemStation

Volume Inj. : 5 g/ml
 Signal Phase : RTX-502.2
 Signal Info : 60mx0.53mmx3.00um

Compound	R.T.	Response	Conc Units

System Monitoring Compounds			
5) s AAA-TFT	8.792	450275	19.884 ng/ml
Target Compounds			
6) t Toluene	10.624	5606	0.142 ng/ml
8) t m-Xylene	13.180	7569	0.196 ng/ml
9) t O-Xylene	13.926	10134	0.275 ng/ml
10) t 1,2,4-Trimethylbenzene	16.196	17945	0.635 ng/ml

(f)=RT Delta > 1/2 Window

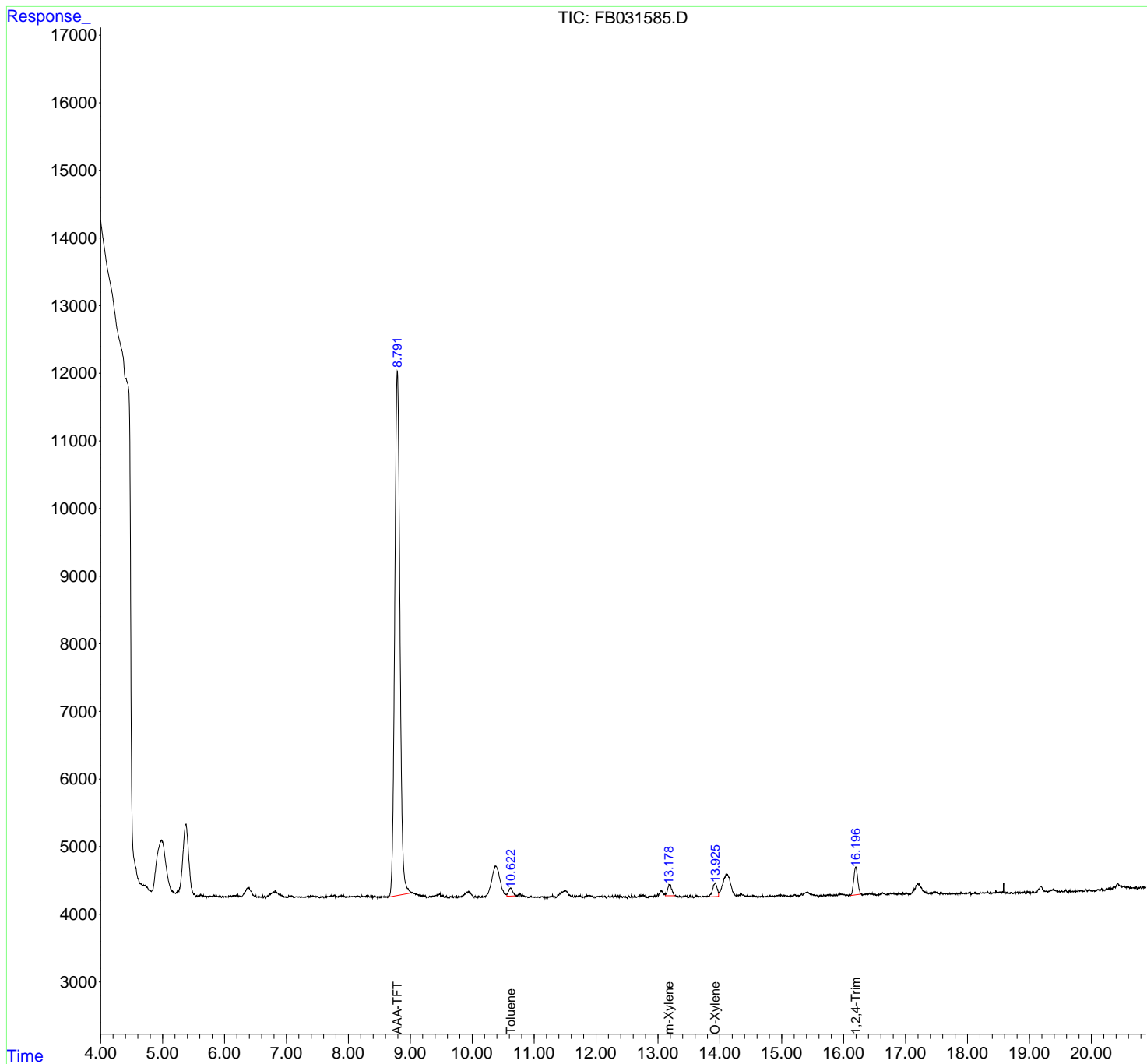
(m)=manual int.

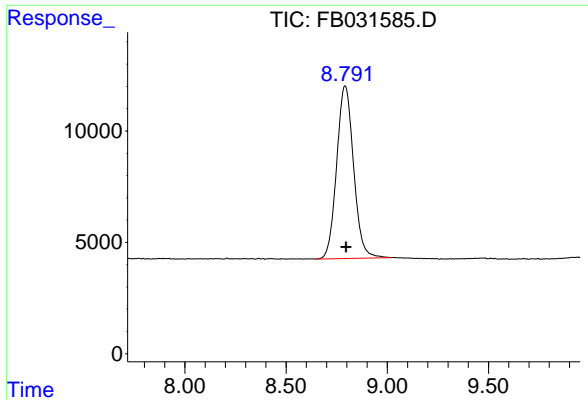
Data Path : Z:\pestpcbsrv\HPCHEM1\FID_B\Data\FB031225\
 Data File : FB031585.D
 Signal(s) : FID2B.CH
 Acq On : 12 Mar 2025 10:09
 Operator : YP/AJ
 Sample : VBF0312W1
 Misc :
 ALS Vial : 2 Sample Multiplier: 1

Instrument :
 FID_B
 ClientSampleId :
 VBF0312W1

Integration File: Calibration.e
 Quant Time: Mar 13 01:16:11 2025
 Quant Method : Z:\pestpcbsrv\HPCHEM1\FID_B\Method\FB030625.M
 Quant Title :
 QLast Update : Thu Mar 06 13:17:04 2025
 Response via : Initial Calibration
 Integrator: ChemStation

Volume Inj. : 5 g/ml
 Signal Phase : RTX-502.2
 Signal Info : 60mx0.53mmx3.00um

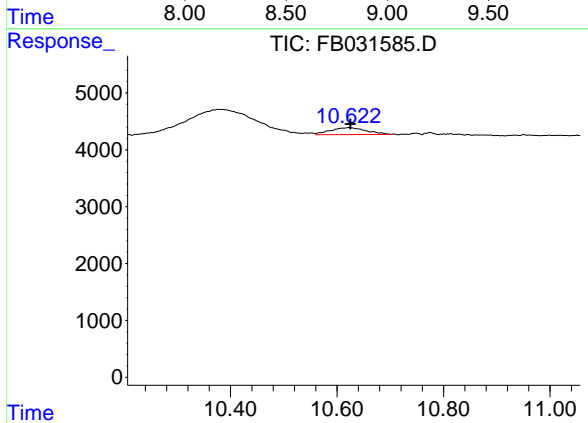




#5 AAA-TFT

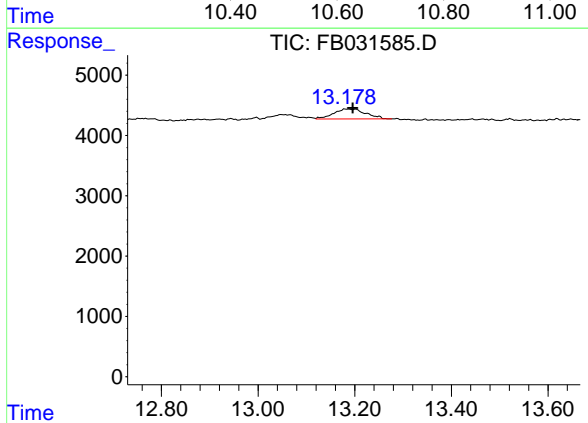
R.T.: 8.792 min
 Delta R.T.: -0.005 min
 Response: 450275
 Conc: 19.88 ng/ml

Instrument : FID_B
 ClientSampleId : VBF0312W1



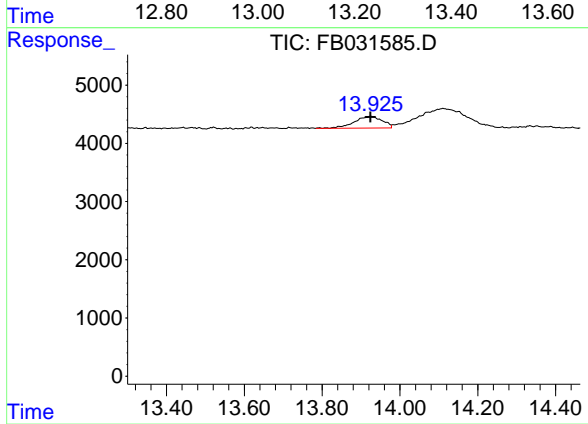
#6 Toluene

R.T.: 10.624 min
 Delta R.T.: -0.002 min
 Response: 5606
 Conc: 0.14 ng/ml



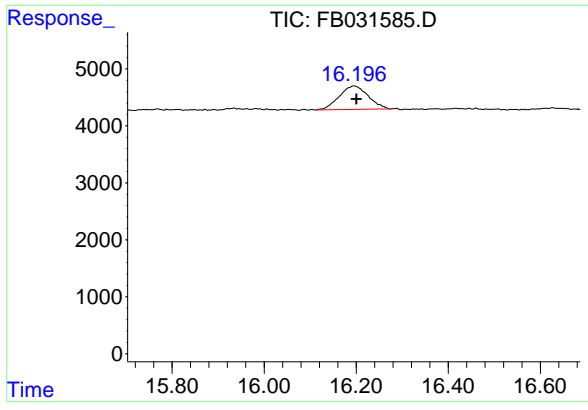
#8 m-Xylene

R.T.: 13.180 min
 Delta R.T.: -0.016 min
 Response: 7569
 Conc: 0.20 ng/ml



#9 O-Xylene

R.T.: 13.926 min
 Delta R.T.: 0.001 min
 Response: 10134
 Conc: 0.27 ng/ml



#10 1,2,4-Trimethylbenzene

R.T.: 16.196 min
Delta R.T.: -0.004 min
Response: 17945
Conc: 0.64 ng/ml

Instrument : FID_B
ClientSampleId : VBF0312W1