

Data Path : Z:\pestpcbsrv\HPCHEM1\FID\_B\Data\FB031519\  
 Data File : FB020236.D  
 Signal(s) : FID2B.CH  
 Acq On : 15 Mar 2019 15:31  
 Operator : MJ/SJ  
 Sample : 20 PPB GRO STD  
 Misc :  
 ALS Vial : 14 Sample Multiplier: 1

Instrument :  
 FID\_B  
 ClientSampleId :  
 20 PPB GRO STD

Integration File: Calibration.e  
 Quant Time: Mar 15 15:47:33 2019  
 Quant Method : Z:\pestpcbsrv\HPCHEM1\FID\_B\Method\FB031119.M  
 Quant Title :  
 QLast Update : Mon Mar 11 13:44:46 2019  
 Response via : Initial Calibration  
 Integrator: ChemStation

Volume Inj. : 5 g/ml  
 Signal Phase : RTX-502.2  
 Signal Info : 60mx0.53mmx3.00um

Compound	R.T.	Response	Conc Units
-----			
System Monitoring Compounds			
5) s AAA-TFT	9.047	503461	19.177 ng/ml
Target Compounds			
1) t 2-Methylpentane	4.903	964602	28.595 ng/ml
2) t 2,2,4-Trimethylpentane	7.670	862951	26.314 ng/ml
3) t n-Heptane	8.000	405412	9.741 ng/ml
4) t Benzene	8.139	435772	9.360 ng/ml
6) t Toluene	10.894	993156	26.876 ng/ml
7) t Ethylbenzene	13.347	215505	9.159 ng/ml
8) t m-Xylene	13.480	414156	19.415 ng/ml
9) t O-Xylene	14.212	400301	21.132 ng/ml
10) t 1,2,4-Trimethylbenzene	16.497	421237	21.240 ng/ml
-----			

(f)=RT Delta > 1/2 Window

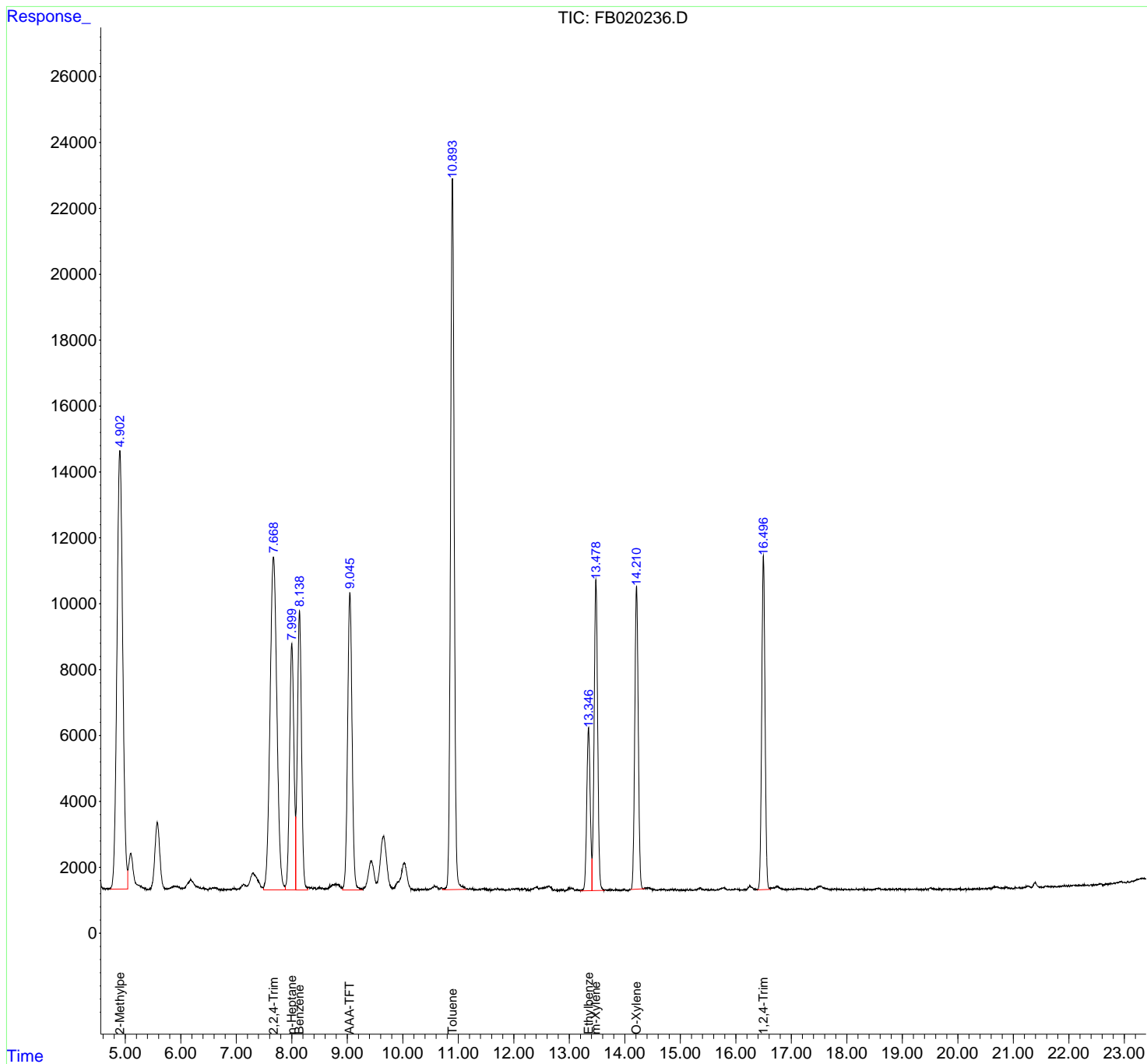
(m)=manual int.

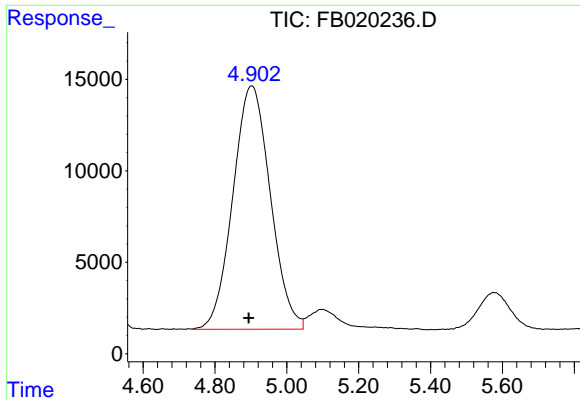
Data Path : Z:\pestpcbsrv\HPCHEM1\FID\_B\Data\FB031519\  
 Data File : FB020236.D  
 Signal(s) : FID2B.CH  
 Acq On : 15 Mar 2019 15:31  
 Operator : MJ/SJ  
 Sample : 20 PPB GRO STD  
 Misc :  
 ALS Vial : 14 Sample Multiplier: 1

Instrument :  
 FID\_B  
 ClientSampled :  
 20 PPB GRO STD

Integration File: Calibration.e  
 Quant Time: Mar 15 15:47:33 2019  
 Quant Method : Z:\pestpcbsrv\HPCHEM1\FID\_B\Method\FB031119.M  
 Quant Title :  
 QLast Update : Mon Mar 11 13:44:46 2019  
 Response via : Initial Calibration  
 Integrator: ChemStation

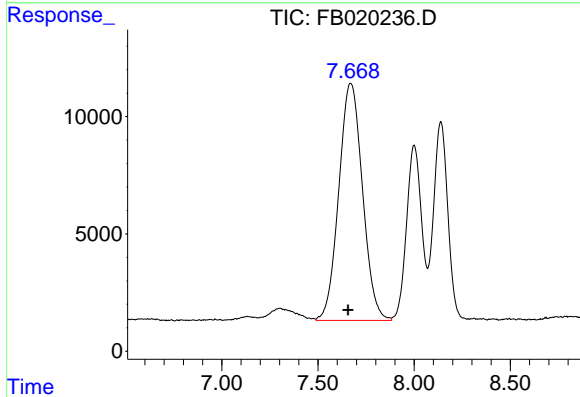
Volume Inj. : 5 g/ml  
 Signal Phase : RTX-502.2  
 Signal Info : 60mx0.53mmx3.00um



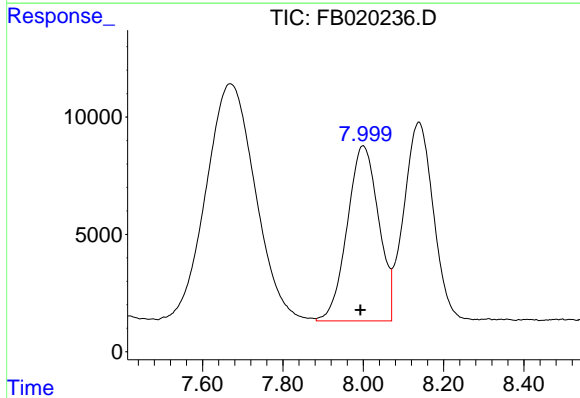


#1 2-Methylpentane  
 R.T.: 4.903 min  
 Delta R.T.: 0.009 min  
 Response: 964602  
 Conc: 28.59 ng/ml

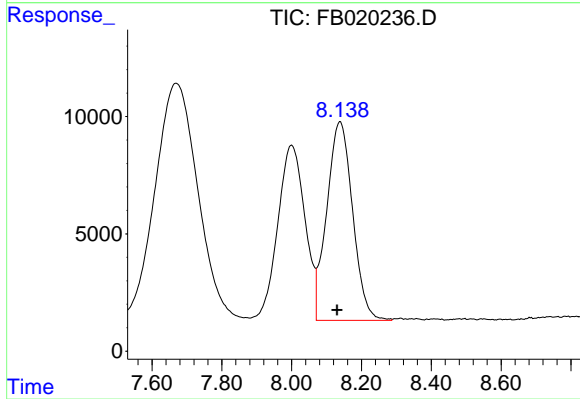
Instrument :  
 FID\_B  
 ClientSampleId :  
 20 PPB GRO STD



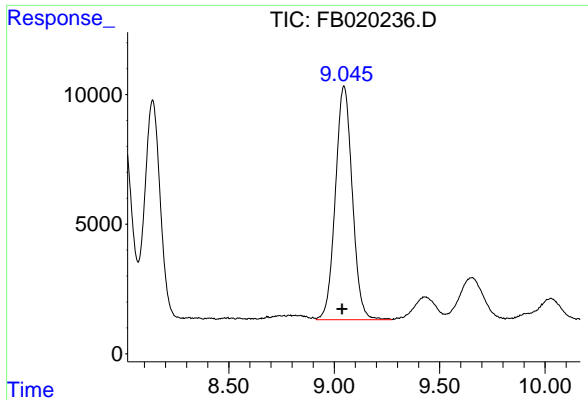
#2 2,2,4-Trimethylpentane  
 R.T.: 7.670 min  
 Delta R.T.: 0.013 min  
 Response: 862951  
 Conc: 26.31 ng/ml



#3 n-Heptane  
 R.T.: 8.000 min  
 Delta R.T.: 0.008 min  
 Response: 405412  
 Conc: 9.74 ng/ml

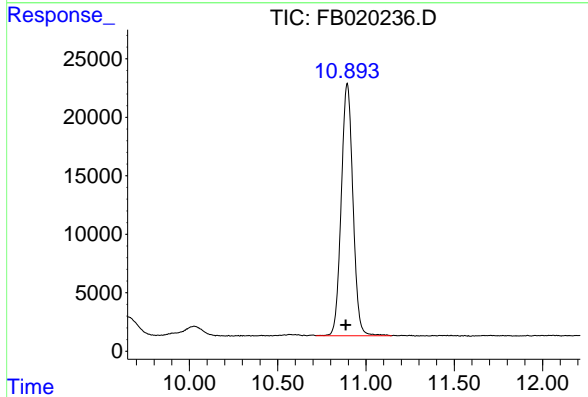


#4 Benzene  
 R.T.: 8.139 min  
 Delta R.T.: 0.009 min  
 Response: 435772  
 Conc: 9.36 ng/ml

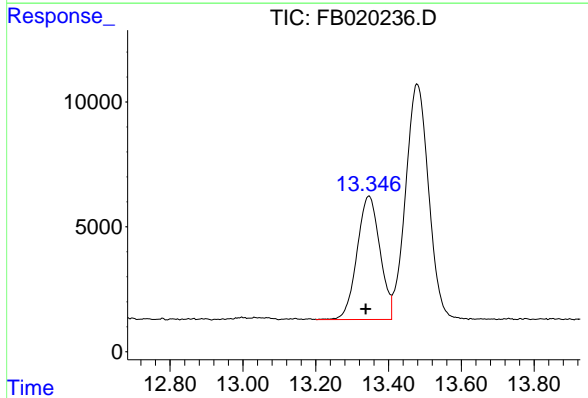


#5 AAA-TFT  
 R.T.: 9.047 min  
 Delta R.T.: 0.009 min  
 Response: 503461  
 Conc: 19.18 ng/ml

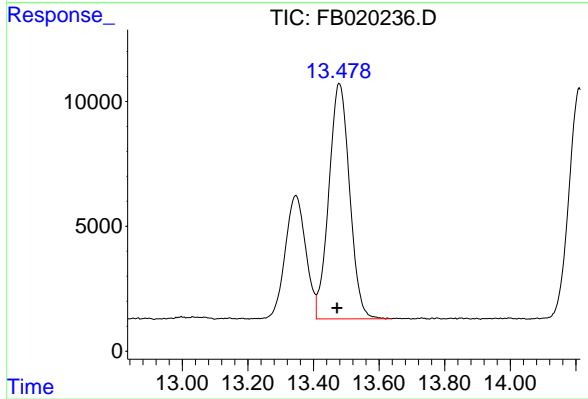
Instrument :  
 FID\_B  
 ClientSampleId :  
 20 PPB GRO STD



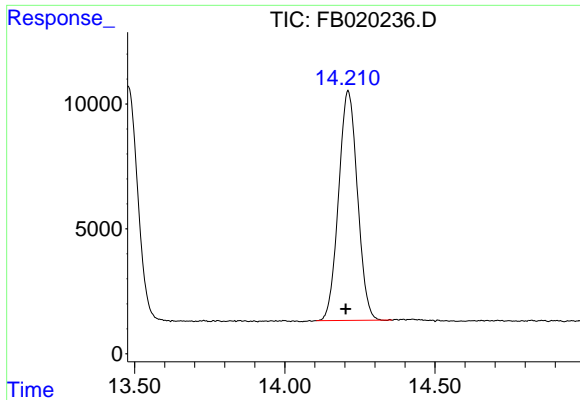
#6 Toluene  
 R.T.: 10.894 min  
 Delta R.T.: 0.009 min  
 Response: 993156  
 Conc: 26.88 ng/ml



#7 Ethylbenzene  
 R.T.: 13.347 min  
 Delta R.T.: 0.009 min  
 Response: 215505  
 Conc: 9.16 ng/ml



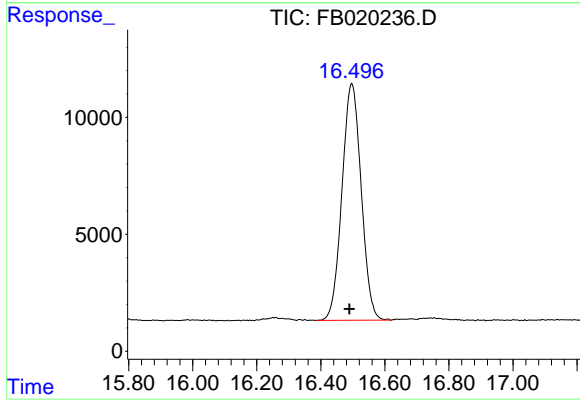
#8 m-Xylene  
 R.T.: 13.480 min  
 Delta R.T.: 0.008 min  
 Response: 414156  
 Conc: 19.41 ng/ml



#9 O-Xylene

R.T.: 14.212 min  
Delta R.T.: 0.008 min  
Response: 400301  
Conc: 21.13 ng/ml

Instrument :  
FID\_B  
ClientSampleId :  
20 PPB GRO STD



#10 1,2,4-Trimethylbenzene

R.T.: 16.497 min  
Delta R.T.: 0.008 min  
Response: 421237  
Conc: 21.24 ng/ml