

Data Path : Z:\pestpcbsrv\HPCHEM1\FID\_B\Data\FB031519\  
Data File : FB020252.D  
Signal(s) : FID2B.CH  
Acq On : 15 Mar 2019 23:38  
Operator : MJ/SJ  
Sample : K1958-06  
Misc : 5.06g/5.00ml DI WATER  
ALS Vial : 30 Sample Multiplier: 1

Instrument :  
FID\_B  
ClientSampleId :  
TP-3

Integration File: Calibration.e  
Quant Time: Mar 16 00:27:57 2019  
Quant Method : Z:\pestpcbsrv\HPCHEM1\FID\_B\Method\FB031119.M  
Quant Title :  
QLast Update : Mon Mar 11 13:44:46 2019  
Response via : Initial Calibration  
Integrator: ChemStation

Volume Inj. : 5 g/ml  
Signal Phase : RTX-502.2  
Signal Info : 60mx0.53mmx3.00um

Compound	R.T.	Response	Conc Units
-----			
System Monitoring Compounds			
5) s AAA-TFT	9.046	488401	18.604 ng/ml
Target Compounds			
-----			

(f)=RT Delta > 1/2 Window

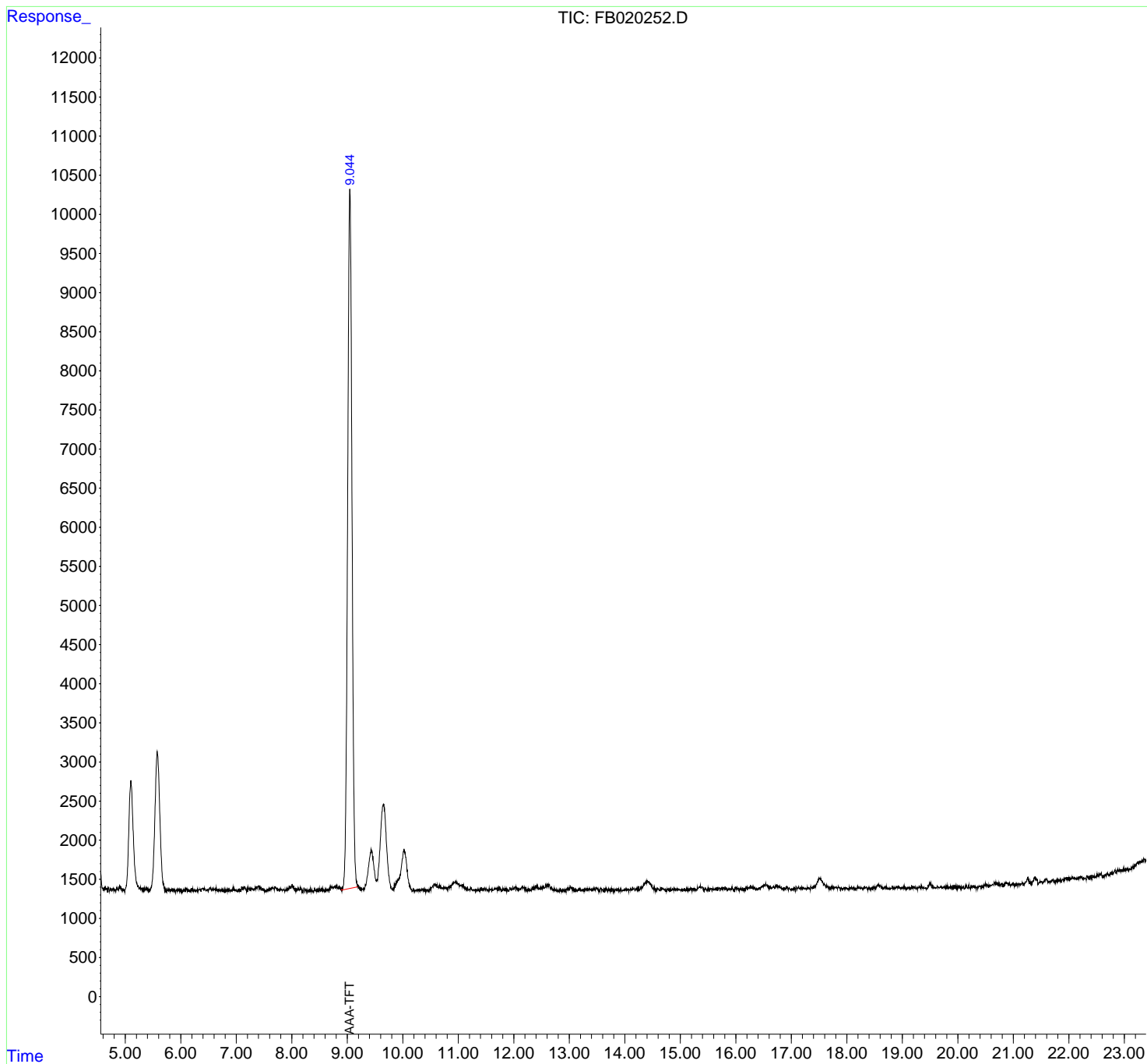
(m)=manual int.

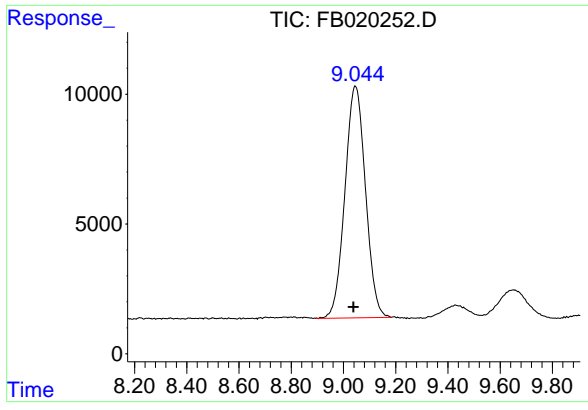
Data Path : Z:\pestpcbsrv\HPCHEM1\FID\_B\Data\FB031519\  
 Data File : FB020252.D  
 Signal(s) : FID2B.CH  
 Acq On : 15 Mar 2019 23:38  
 Operator : MJ/SJ  
 Sample : K1958-06  
 Misc : 5.06g/5.00ml DI WATER  
 ALS Vial : 30 Sample Multiplier: 1

Instrument :  
 FID\_B  
 ClientSampleId :  
 TP-3

Integration File: Calibration.e  
 Quant Time: Mar 16 00:27:57 2019  
 Quant Method : Z:\pestpcbsrv\HPCHEM1\FID\_B\Method\FB031119.M  
 Quant Title :  
 QLast Update : Mon Mar 11 13:44:46 2019  
 Response via : Initial Calibration  
 Integrator: ChemStation

Volume Inj. : 5 g/ml  
 Signal Phase : RTX-502.2  
 Signal Info : 60mx0.53mmx3.00um





#5 AAA-TFT

R.T.: 9.046 min  
Delta R.T.: 0.008 min  
Response: 488401  
Conc: 18.60 ng/ml

Instrument :  
FID\_B  
ClientSampled :  
TP-3