

Data Path : Z:\pestpcbsrv\HPCHEM1\FID_B\Data\FB031622\
 Data File : FB026707.D
 Signal(s) : FID2B.CH
 Acq On : 17 Mar 2022 4:31
 Operator : AJ/MA
 Sample : N1968-03
 Misc : 5.05G/5.00 ML DI WATER
 ALS Vial : 20 Sample Multiplier: 1

Instrument :
 FID_B
 ClientSampleId :

Integration File: Calibration.e
 Quant Time: Mar 17 07:44:36 2022
 Quant Method : Z:\pestpcbsrv\HPCHEM1\FID_B\Method\FB030822.M
 Quant Title :
 QLast Update : Fri Mar 11 13:08:49 2022
 Response via : Initial Calibration
 Integrator: ChemStation

Volume Inj. : 5 g/ml
 Signal Phase : RTX-502.2
 Signal Info : 60mx0.53mmx3.00um

Compound	R.T.	Response	Conc Units

System Monitoring Compounds			
5) s AAA-TFT	8.792	89481	8.527 ng/ml
Target Compounds			
4) t Benzene	7.885	226113	9.799 ng/ml
6) t Toluene	10.618	20080	0.917 ng/ml
7) t Ethylbenzene	13.055	250602	12.469 ng/ml
8) t m-Xylene	13.185	308580	15.312 ng/ml
9) t O-Xylene	13.915	99480	4.986 ng/ml
10) t 1,2,4-Trimethylbenzene	16.190	159289	7.995 ng/ml

(f)=RT Delta > 1/2 Window

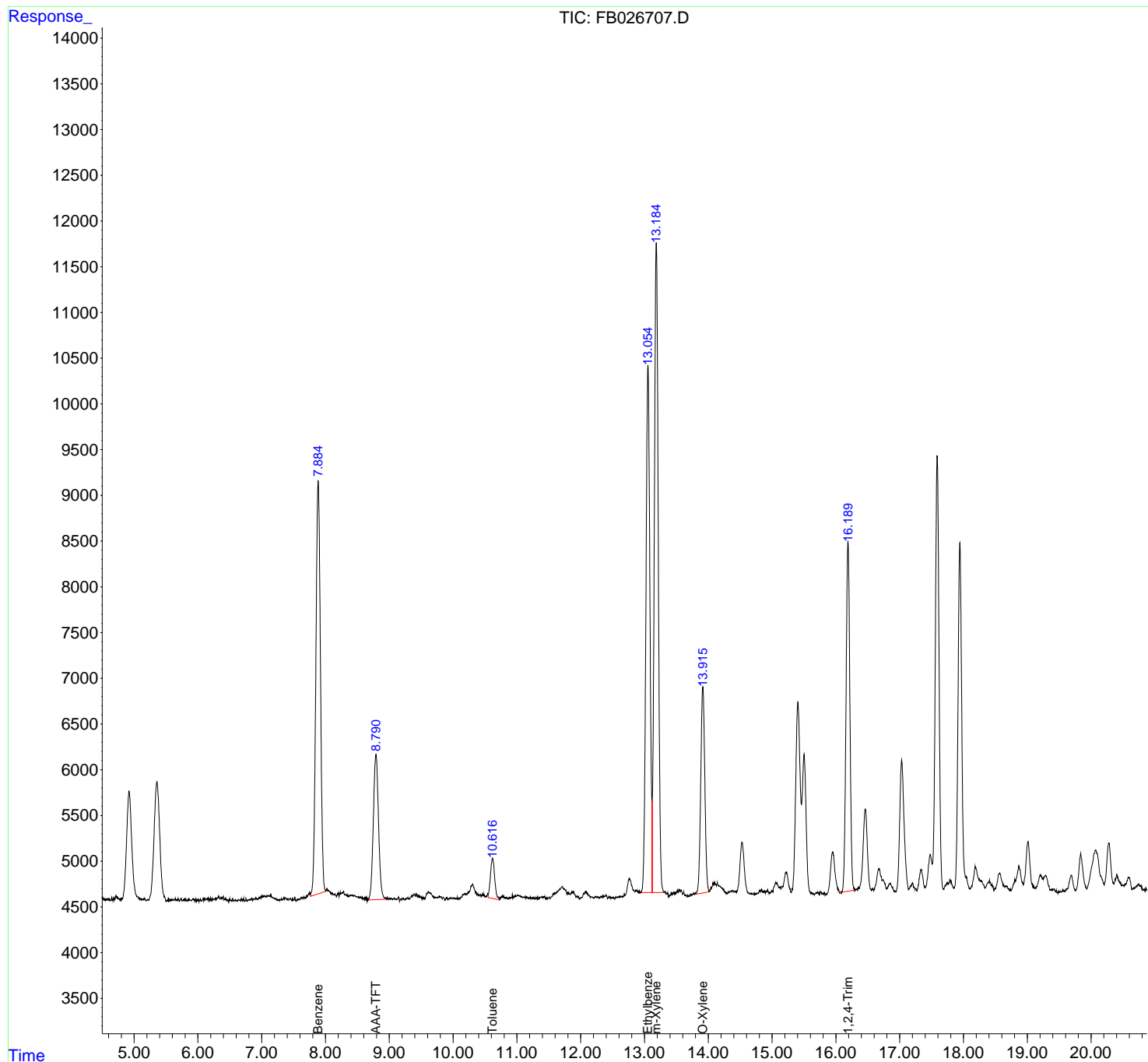
(m)=manual int.

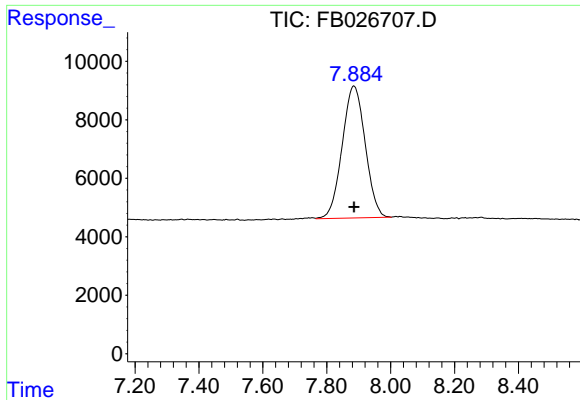
Data Path : Z:\pestpcbsrv\HPCHEM1\FID_B\Data\FB031622\
 Data File : FB026707.D
 Signal(s) : FID2B.CH
 Acq On : 17 Mar 2022 4:31
 Operator : AJ/MA
 Sample : N1968-03
 Misc : 5.05G/5.00 ML DI WATER
 ALS Vial : 20 Sample Multiplier: 1

Instrument :
 FID_B
 ClientSampleId :

Integration File: Calibration.e
 Quant Time: Mar 17 07:44:36 2022
 Quant Method : Z:\pestpcbsrv\HPCHEM1\FID_B\Method\FB030822.M
 Quant Title :
 QLast Update : Fri Mar 11 13:08:49 2022
 Response via : Initial Calibration
 Integrator: ChemStation

Volume Inj. : 5 g/ml
 Signal Phase : RTX-502.2
 Signal Info : 60mx0.53mmx3.00um

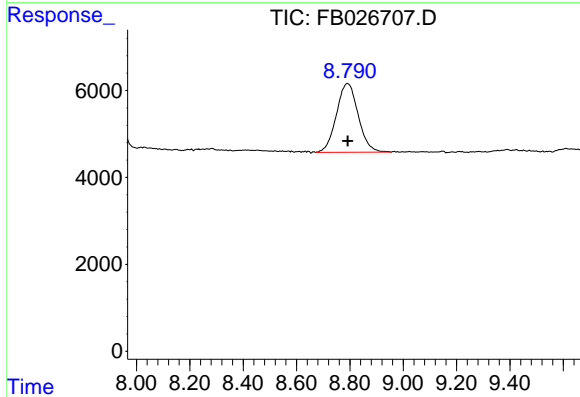




#4 Benzene

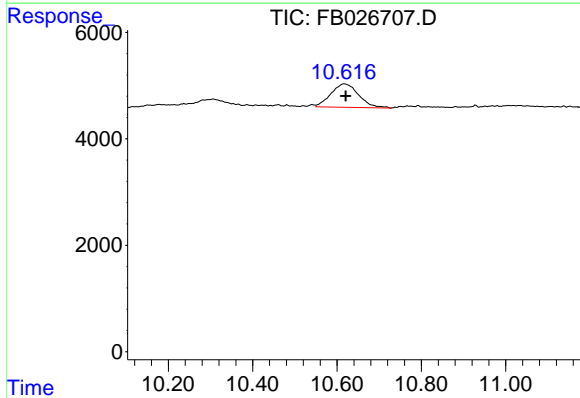
R.T.: 7.885 min
 Delta R.T.: 0.000 min
 Response: 226113
 Conc: 9.80 ng/ml

Instrument : FID_B
 ClientSampleId :



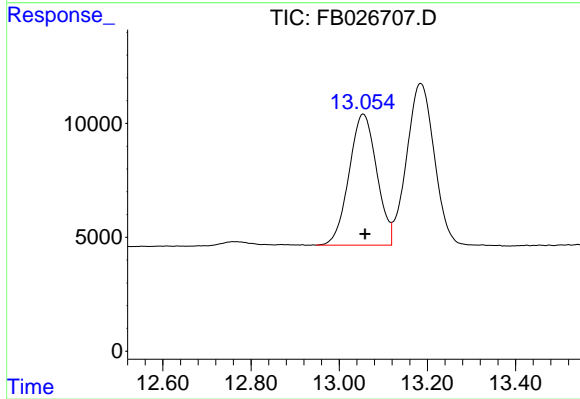
#5 AAA-TFT

R.T.: 8.792 min
 Delta R.T.: 0.000 min
 Response: 89481
 Conc: 8.53 ng/ml



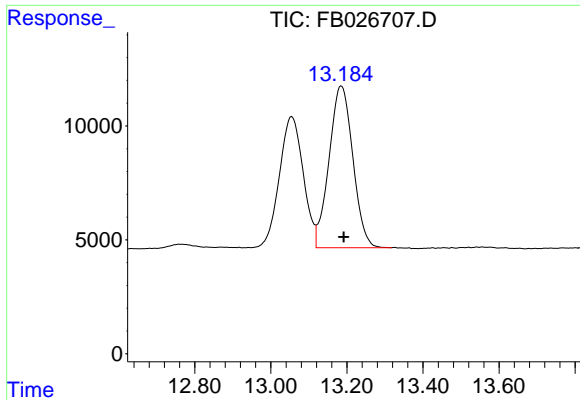
#6 Toluene

R.T.: 10.618 min
 Delta R.T.: -0.003 min
 Response: 20080
 Conc: 0.92 ng/ml



#7 Ethylbenzene

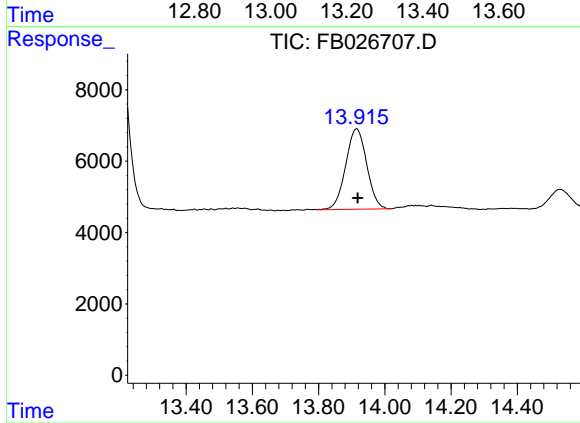
R.T.: 13.055 min
 Delta R.T.: -0.004 min
 Response: 250602
 Conc: 12.47 ng/ml



#8 m-Xylene

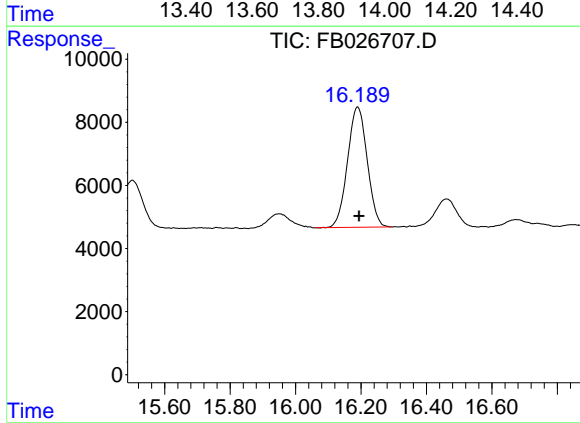
R.T.: 13.185 min
 Delta R.T.: -0.006 min
 Response: 308580
 Conc: 15.31 ng/ml

Instrument :
 FID_B
 ClientSampleId :



#9 o-Xylene

R.T.: 13.915 min
 Delta R.T.: -0.003 min
 Response: 99480
 Conc: 4.99 ng/ml



#10 1,2,4-Trimethylbenzene

R.T.: 16.190 min
 Delta R.T.: -0.004 min
 Response: 159289
 Conc: 7.99 ng/ml