

Data Path : Z:\pestpcbsrv\HPCHEM1\FID_B\Data\FB031720\
 Data File : FB023967.D
 Signal(s) : FID2B.CH
 Acq On : 17 Mar 2020 10:38
 Operator : DD/AJ
 Sample : BSF0317S1
 Misc : 5.01g/5.00ml DI WATER
 ALS Vial : 3 Sample Multiplier: 1

Integration File: Calibration.e
 Quant Time: Mar 18 00:48:43 2020
 Quant Method : Z:\pestpcbsrv\HPCHEM1\FID_B\Method\FB030520.M
 Quant Title :
 QLast Update : Thu Mar 05 11:03:12 2020
 Response via : Initial Calibration
 Integrator: ChemStation

Volume Inj. : 5 g/ml
 Signal Phase : RTX-502.2
 Signal Info : 60mx0.53mmx3.00um

Compound	R.T.	Response	Conc Units

System Monitoring Compounds			
5) s AAA-TFT	8.795	439864	20.895 ng/ml
Target Compounds			
1) t 2-Methylpentane	4.686	980932	31.740 ng/ml
2) t 2,2,4-Trimethylpentane	7.413	1143309	33.905 ng/ml
3) t n-Heptane	7.754	366699	11.069 ng/ml
4) t Benzene	7.888	451322	10.779 ng/ml
6) t Toluene	10.627	1323422	32.458 ng/ml
7) t Ethylbenzene	13.067	419104	10.969 ng/ml
8) t m-Xylene	13.200	814453	22.122 ng/ml
9) t O-Xylene	13.928	783880	22.040 ng/ml
10) t 1,2,4-Trimethylbenzene	16.205	688730	22.734 ng/ml

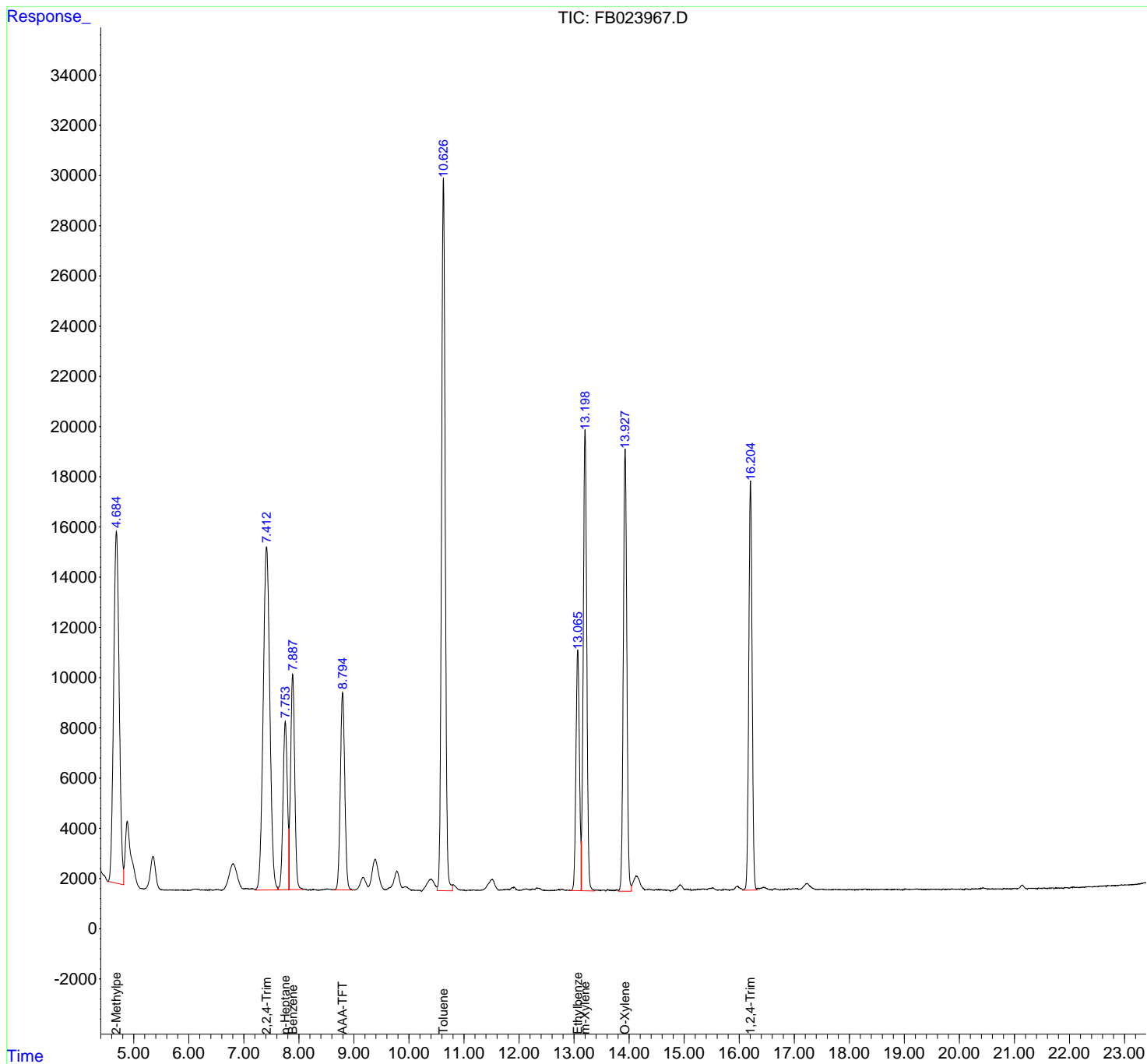
(f)=RT Delta > 1/2 Window

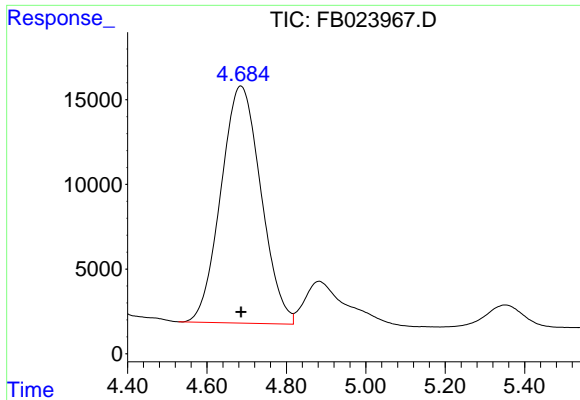
(m)=manual int.

Data Path : Z:\pestpcbsrv\HPCHEM1\FID_B\Data\FB031720\
 Data File : FB023967.D
 Signal(s) : FID2B.CH
 Acq On : 17 Mar 2020 10:38
 Operator : DD/AJ
 Sample : BSF0317S1
 Misc : 5.01g/5.00ml DI WATER
 ALS Vial : 3 Sample Multiplier: 1

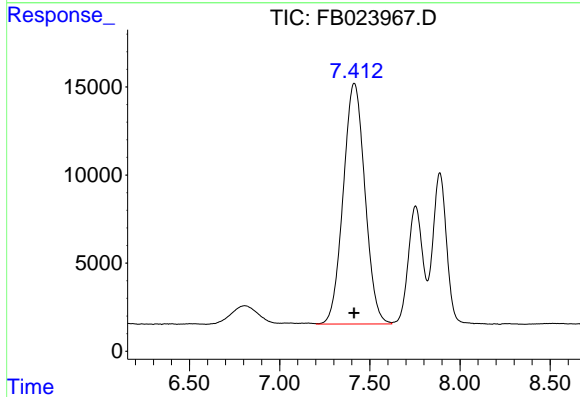
Integration File: Calibration.e
 Quant Time: Mar 18 00:48:43 2020
 Quant Method : Z:\pestpcbsrv\HPCHEM1\FID_B\Method\FB030520.M
 Quant Title :
 QLast Update : Thu Mar 05 11:03:12 2020
 Response via : Initial Calibration
 Integrator: ChemStation

Volume Inj. : 5 g/ml
 Signal Phase : RTX-502.2
 Signal Info : 60mx0.53mmx3.00um

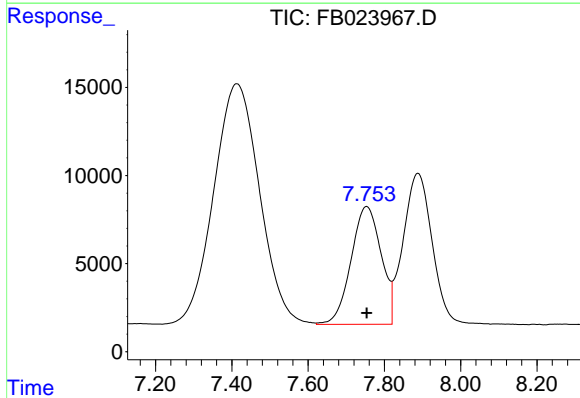




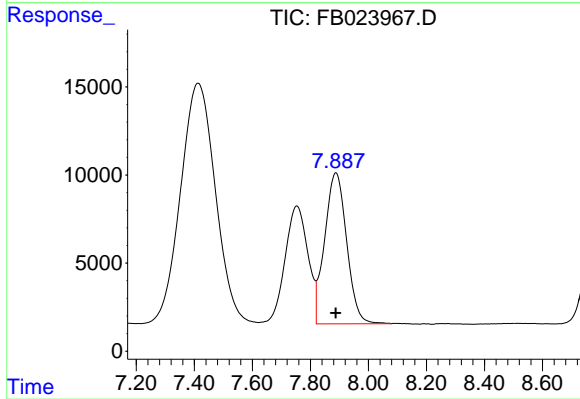
#1 2-Methylpentane
 R.T.: 4.686 min
 Delta R.T.: 0.000 min
 Response: 980932
 Conc: 31.74 ng/ml



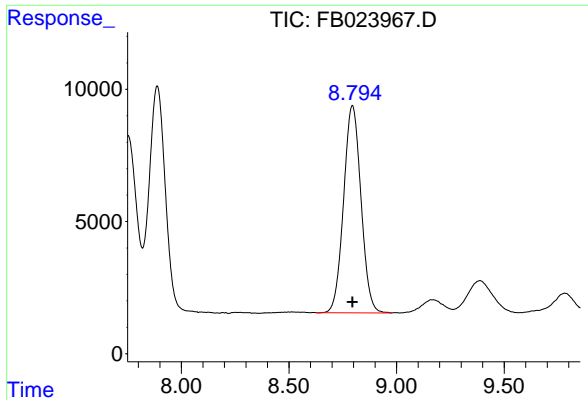
#2 2,2,4-Trimethylpentane
 R.T.: 7.413 min
 Delta R.T.: 0.000 min
 Response: 1143309
 Conc: 33.91 ng/ml



#3 n-Heptane
 R.T.: 7.754 min
 Delta R.T.: 0.000 min
 Response: 366699
 Conc: 11.07 ng/ml

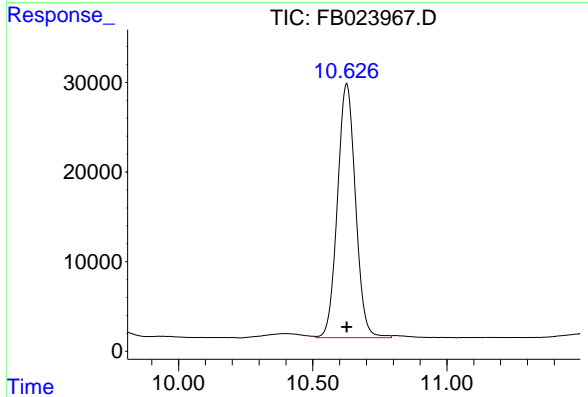


#4 Benzene
 R.T.: 7.888 min
 Delta R.T.: 0.000 min
 Response: 451322
 Conc: 10.78 ng/ml



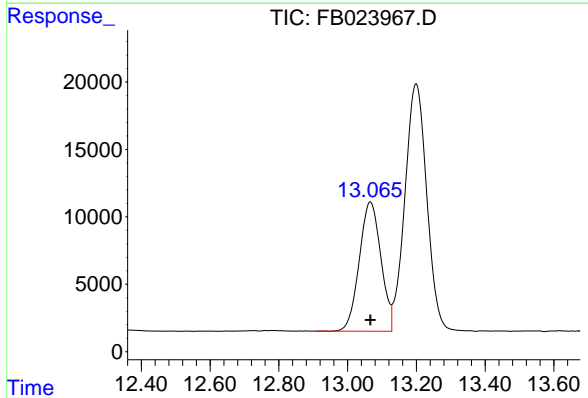
#5 AAA-TFT

R.T.: 8.795 min
 Delta R.T.: 0.000 min
 Response: 439864
 Conc: 20.90 ng/ml



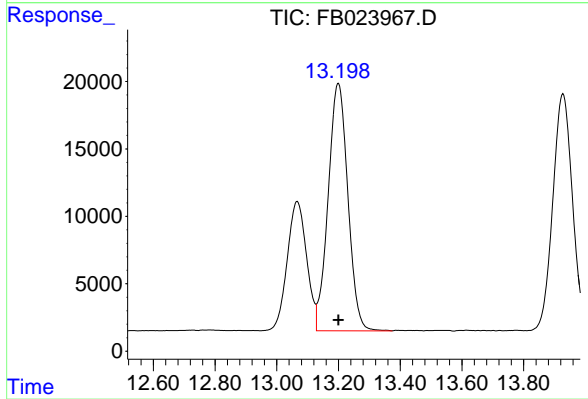
#6 Toluene

R.T.: 10.627 min
 Delta R.T.: 0.000 min
 Response: 1323422
 Conc: 32.46 ng/ml



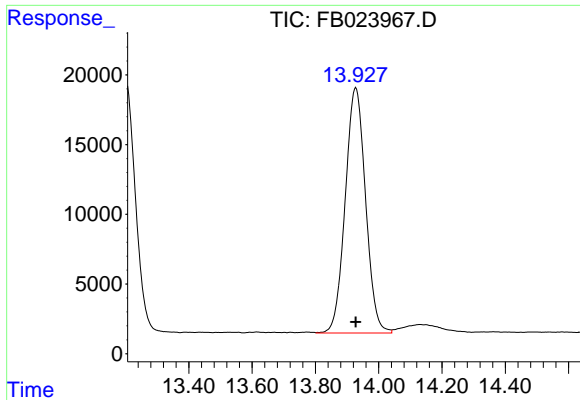
#7 Ethylbenzene

R.T.: 13.067 min
 Delta R.T.: 0.000 min
 Response: 419104
 Conc: 10.97 ng/ml

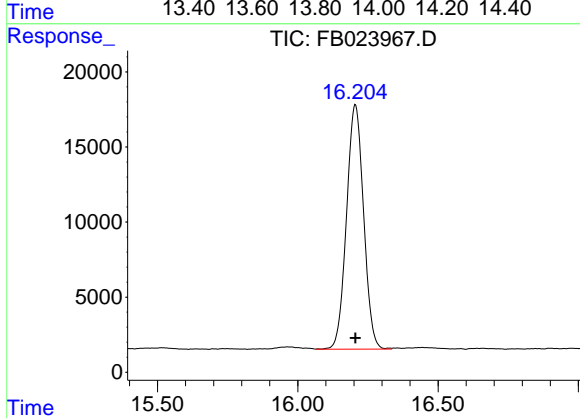


#8 m-Xylene

R.T.: 13.200 min
 Delta R.T.: 0.000 min
 Response: 814453
 Conc: 22.12 ng/ml



#9 O-Xylene
R.T.: 13.928 min
Delta R.T.: 0.000 min
Response: 783880
Conc: 22.04 ng/ml



#10 1,2,4-Trimethylbenzene
R.T.: 16.205 min
Delta R.T.: 0.000 min
Response: 688730
Conc: 22.73 ng/ml