

Data Path : Z:\pestpcbsrv\HPCHEM1\FID\_B\Data\FB032223\  
 Data File : FB029550.D  
 Signal(s) : FID2B.CH  
 Acq On : 22 Mar 2023 13:43  
 Operator : YP/AJ  
 Sample : 20 PPB GRO STD  
 Misc : 5.01G/5.00 ML DI WATER  
 ALS Vial : 10 Sample Multiplier: 1

Instrument :  
 FID\_B  
 ClientSampleId :

Integration File: Calibration.e  
 Quant Time: Mar 22 15:53:14 2023  
 Quant Method : Z:\pestpcbsrv\HPCHEM1\FID\_B\Method\FB030123.M  
 Quant Title :  
 QLast Update : Wed Mar 01 12:30:24 2023  
 Response via : Initial Calibration  
 Integrator: ChemStation

Volume Inj. : 5 g/ml  
 Signal Phase : RTX-502.2  
 Signal Info : 60mx0.53mmx3.00um

Compound	R.T.	Response	Conc Units
-----			
System Monitoring Compounds			
5) s AAA-TFT	8.796	253242	20.902 ng/ml
Target Compounds			
1) t 2-Methylpentane	4.718	381455	24.860 ng/ml
2) t 2,2,4-Trimethylpentane	7.427	471314	27.980 ng/ml
3) t n-Heptane	7.753	147966	8.555 ng/ml
4) t Benzene	7.891	196370	9.674 ng/ml
6) t Toluene	10.624	587191	29.748 ng/ml
7) t Ethylbenzene	13.060	182779	9.818 ng/ml
8) t m-Xylene	13.193	362583	19.490 ng/ml
9) t O-Xylene	13.919	351185	19.073 ng/ml
10) t 1,2,4-Trimethylbenzene	16.194	322115	17.294 ng/ml
-----			

(f)=RT Delta > 1/2 Window

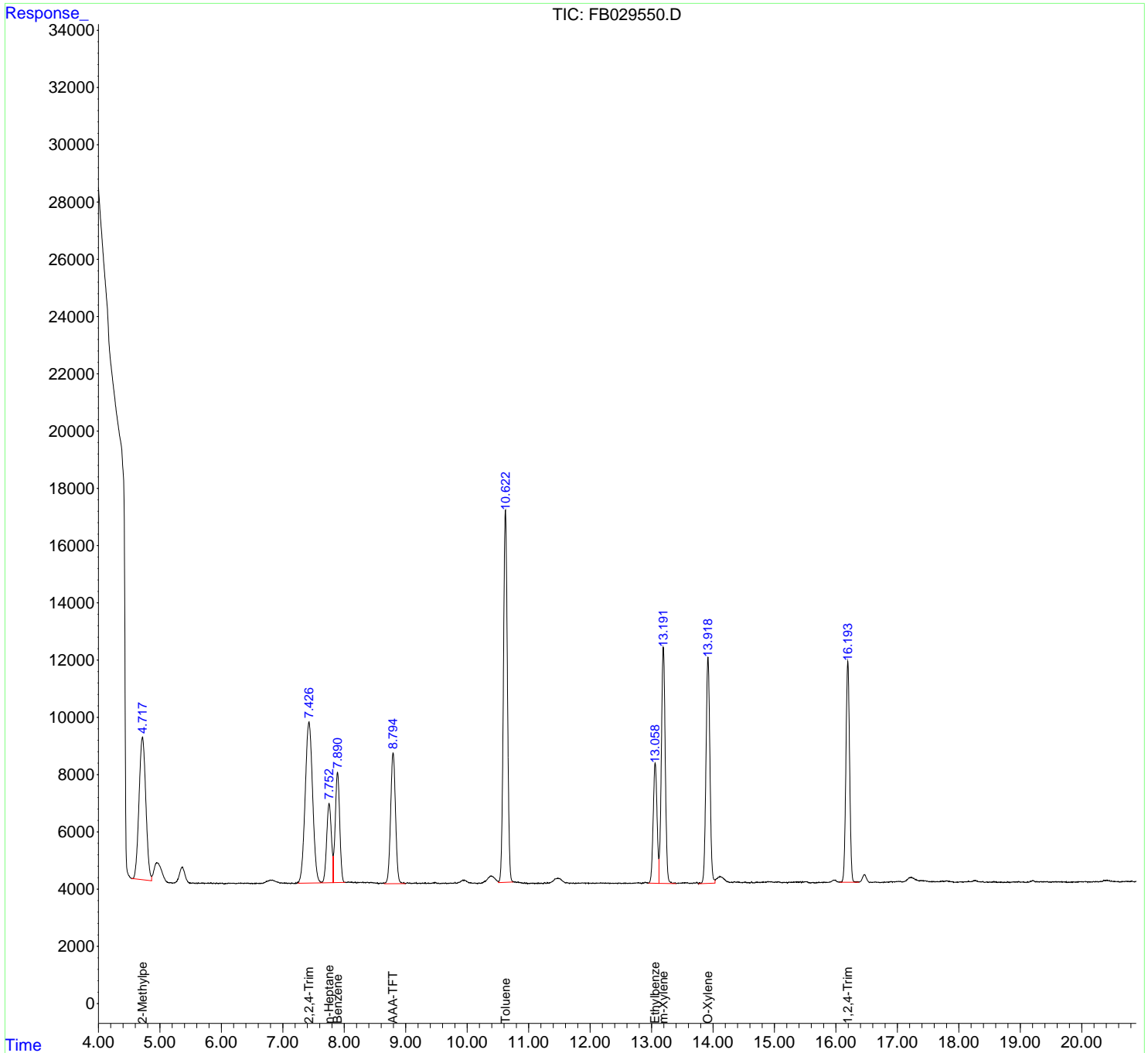
(m)=manual int.

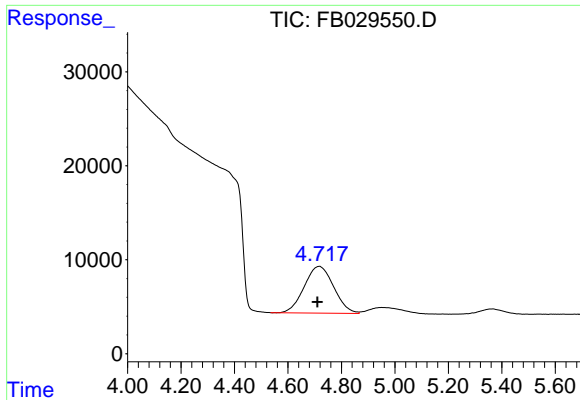
Data Path : Z:\pestpcbsrv\HPCHEM1\FID\_B\Data\FB032223\  
 Data File : FB029550.D  
 Signal(s) : FID2B.CH  
 Acq On : 22 Mar 2023 13:43  
 Operator : YP/AJ  
 Sample : 20 PPB GRO STD  
 Misc : 5.01G/5.00 ML DI WATER  
 ALS Vial : 10 Sample Multiplier: 1

Instrument :  
 FID\_B  
 ClientSampleId :

Integration File: Calibration.e  
 Quant Time: Mar 22 15:53:14 2023  
 Quant Method : Z:\pestpcbsrv\HPCHEM1\FID\_B\Method\FB030123.M  
 Quant Title :  
 QLast Update : Wed Mar 01 12:30:24 2023  
 Response via : Initial Calibration  
 Integrator: ChemStation

Volume Inj. : 5 g/ml  
 Signal Phase : RTX-502.2  
 Signal Info : 60mx0.53mmx3.00um

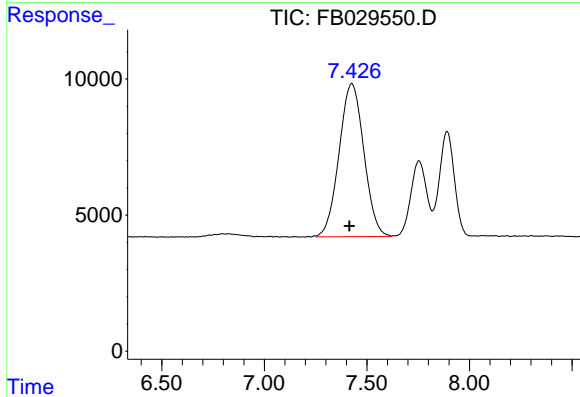




#1 2-Methylpentane

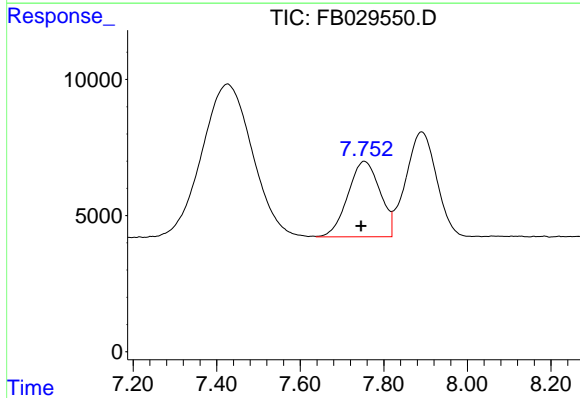
R.T.: 4.718 min  
 Delta R.T.: 0.008 min  
 Response: 381455  
 Conc: 24.86 ng/ml

Instrument : FID\_B  
 ClientSampleId :



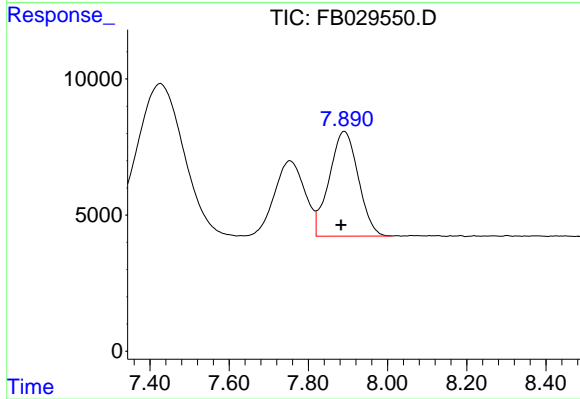
#2 2,2,4-Trimethylpentane

R.T.: 7.427 min  
 Delta R.T.: 0.011 min  
 Response: 471314  
 Conc: 27.98 ng/ml



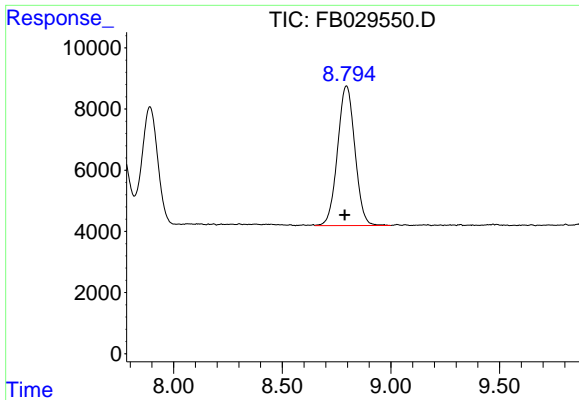
#3 n-Heptane

R.T.: 7.753 min  
 Delta R.T.: 0.008 min  
 Response: 147966  
 Conc: 8.56 ng/ml



#4 Benzene

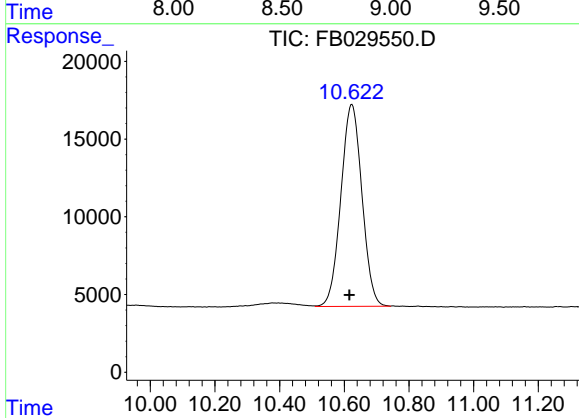
R.T.: 7.891 min  
 Delta R.T.: 0.008 min  
 Response: 196370  
 Conc: 9.67 ng/ml



#5 AAA-TFT

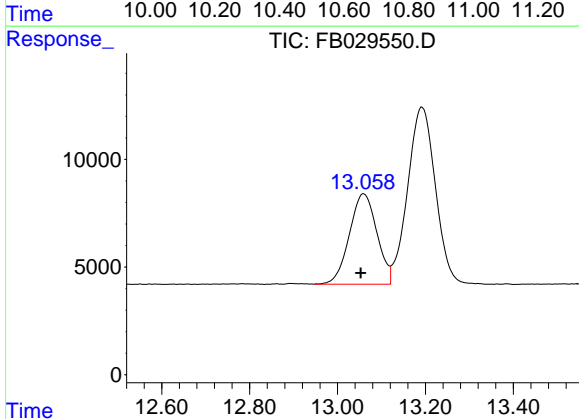
R.T.: 8.796 min  
 Delta R.T.: 0.008 min  
 Response: 253242  
 Conc: 20.90 ng/ml

Instrument :  
 FID\_B  
 ClientSampleId :



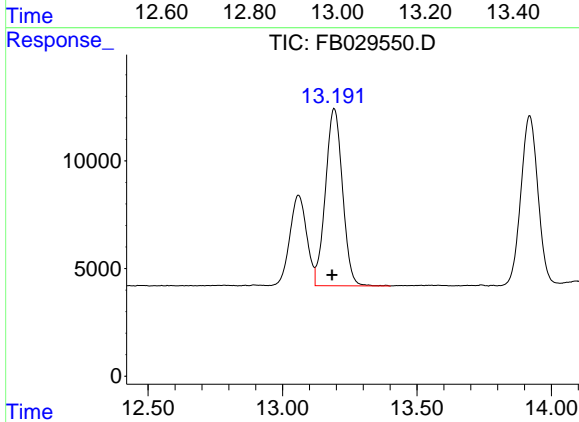
#6 Toluene

R.T.: 10.624 min  
 Delta R.T.: 0.008 min  
 Response: 587191  
 Conc: 29.75 ng/ml



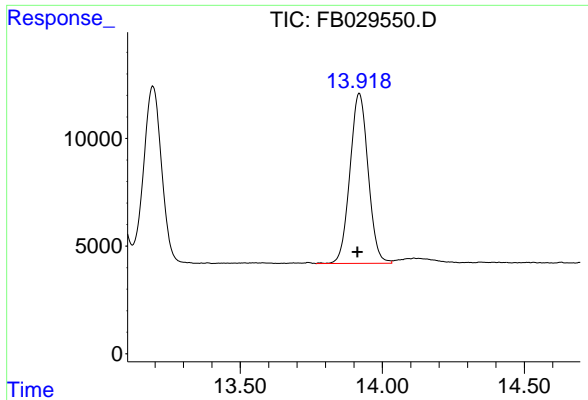
#7 Ethylbenzene

R.T.: 13.060 min  
 Delta R.T.: 0.007 min  
 Response: 182779  
 Conc: 9.82 ng/ml



#8 m-Xylene

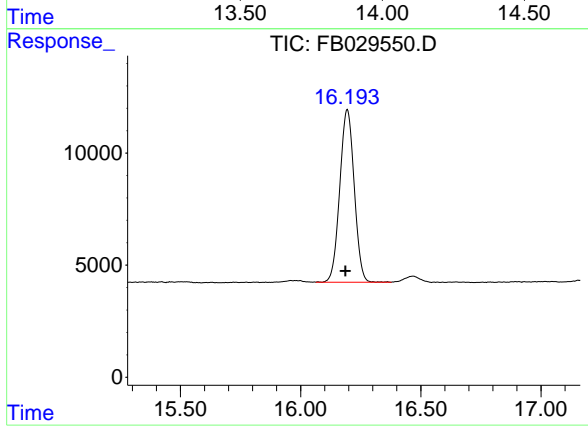
R.T.: 13.193 min  
 Delta R.T.: 0.008 min  
 Response: 362583  
 Conc: 19.49 ng/ml



#9 O-Xylene

R.T.: 13.919 min  
Delta R.T.: 0.007 min  
Response: 351185  
Conc: 19.07 ng/ml

Instrument :  
FID\_B  
ClientSampleId :



#10 1,2,4-Trimethylbenzene

R.T.: 16.194 min  
Delta R.T.: 0.007 min  
Response: 322115  
Conc: 17.29 ng/ml