

Data Path : Z:\pestpcbsrv\HPCHEM1\FID\_B\Data\FB032819\  
 Data File : FB020409.D  
 Signal(s) : FID2B.CH  
 Acq On : 28 Mar 2019 8:51  
 Operator : MJ/SJ  
 Sample : 20 PPB GRO STD  
 Misc :  
 ALS Vial : 1 Sample Multiplier: 1

Instrument :  
 FID\_B  
 ClientSampleId :  
 20 PPB GRO STD

Integration File: Calibration.e  
 Quant Time: Mar 29 00:55:28 2019  
 Quant Method : Z:\pestpcbsrv\HPCHEM1\FID\_B\Method\FB032619.M  
 Quant Title :  
 QLast Update : Tue Mar 26 12:48:09 2019  
 Response via : Initial Calibration  
 Integrator: ChemStation

Volume Inj. : 5 g/ml  
 Signal Phase : RTX-502.2  
 Signal Info : 60mx0.53mmx3.00um

Compound	R.T.	Response	Conc Units
-----			
System Monitoring Compounds			
5) s AAA-TFT	9.037	348297	18.078 ng/ml
Target Compounds			
1) t 2-Methylpentane	4.899	749124	27.027 ng/ml
2) t 2,2,4-Trimethylpentane	7.659	716023	29.859 ng/ml
3) t n-Heptane	7.992	282301	8.635 ng/ml
4) t Benzene	8.130	293766	8.482 ng/ml
6) t Toluene	10.884	707022	27.259 ng/ml
7) t Ethylbenzene	13.336	210447	10.690 ng/ml
8) t m-Xylene	13.469	435595	21.455 ng/ml
9) t O-Xylene	14.200	425096	20.989 ng/ml
10) t 1,2,4-Trimethylbenzene	16.486	426822	20.515 ng/ml
-----			

(f)=RT Delta > 1/2 Window

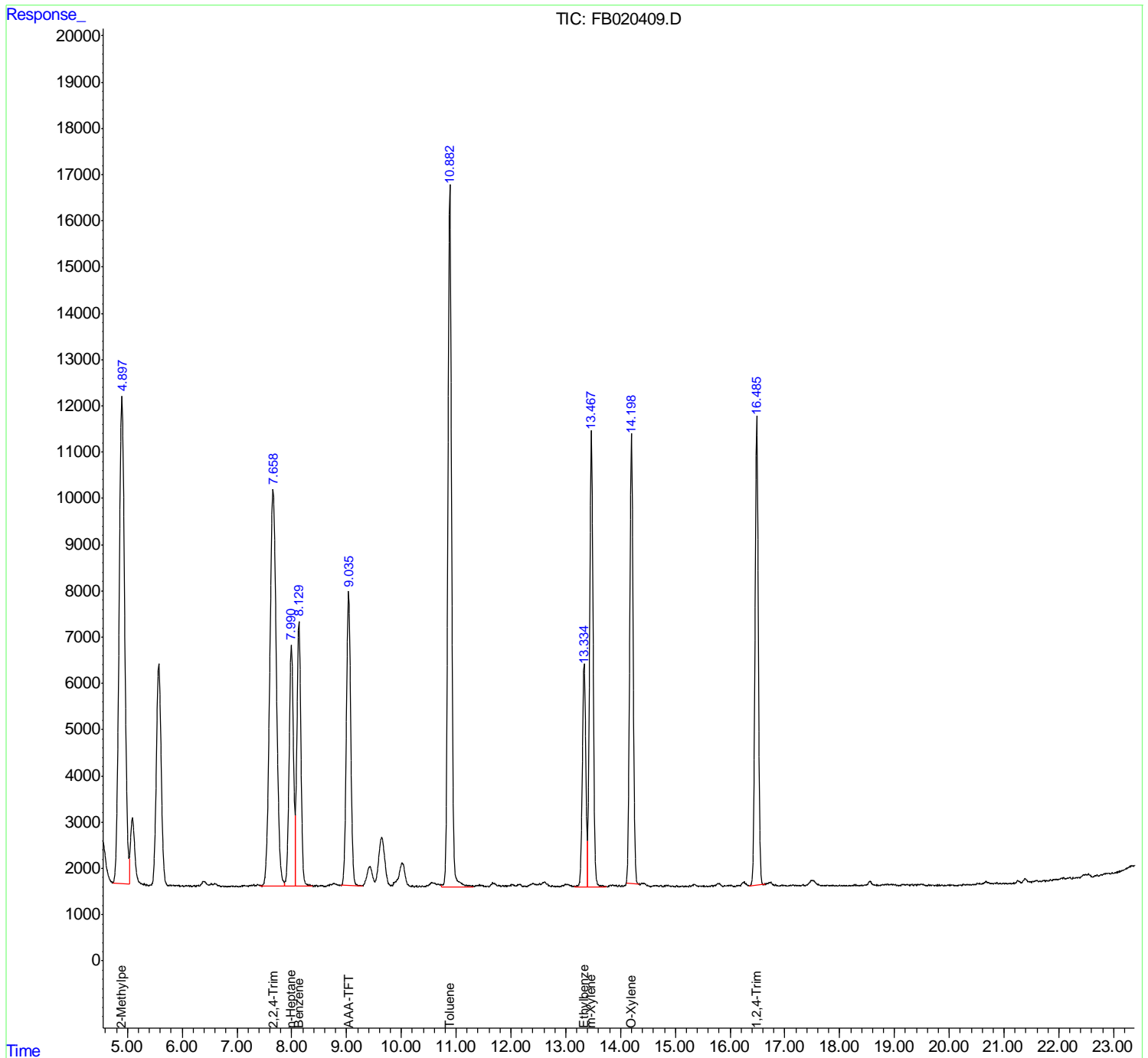
(m)=manual int.

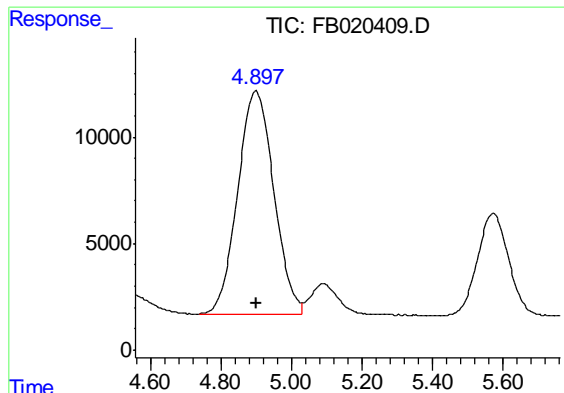
Data Path : Z:\pestpcbsrv\HPCHEM1\FID\_B\Data\FB032819\  
 Data File : FB020409.D  
 Signal(s) : FID2B.CH  
 Acq On : 28 Mar 2019 8:51  
 Operator : MJ/SJ  
 Sample : 20 PPB GRO STD  
 Misc :  
 ALS Vial : 1 Sample Multiplier: 1

Instrument :  
 FID\_B  
 ClientSampleId :  
 20 PPB GRO STD

Integration File: Calibration.e  
 Quant Time: Mar 29 00:55:28 2019  
 Quant Method : Z:\pestpcbsrv\HPCHEM1\FID\_B\Method\FB032619.M  
 Quant Title :  
 QLast Update : Tue Mar 26 12:48:09 2019  
 Response via : Initial Calibration  
 Integrator: ChemStation

Volume Inj. : 5 g/ml  
 Signal Phase : RTX-502.2  
 Signal Info : 60mx0.53mmx3.00um

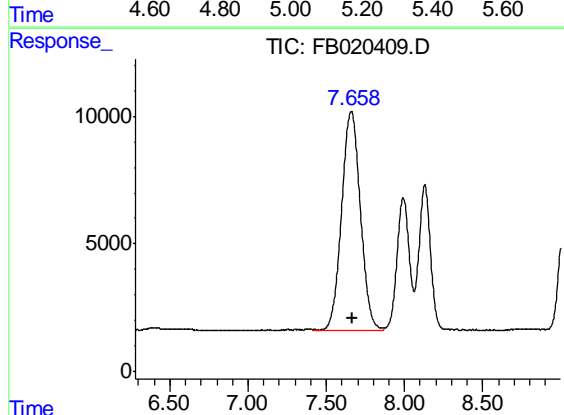




#1 2-Methylpentane

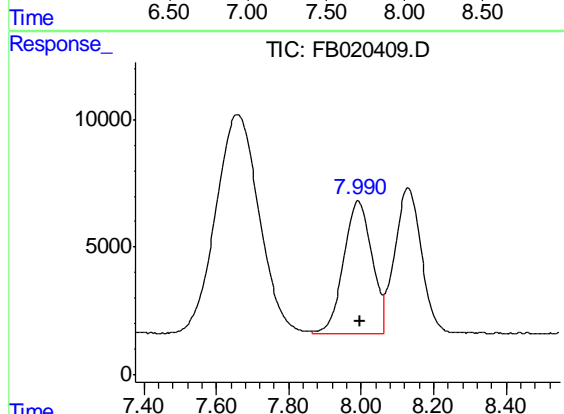
R.T.: 4.899 min  
 Delta R.T.: 0.000 min  
 Response: 749124  
 Conc: 27.03 ng/ml

Instrument :  
 FID\_B  
 ClientSampleId :  
 20 PPB GRO STD



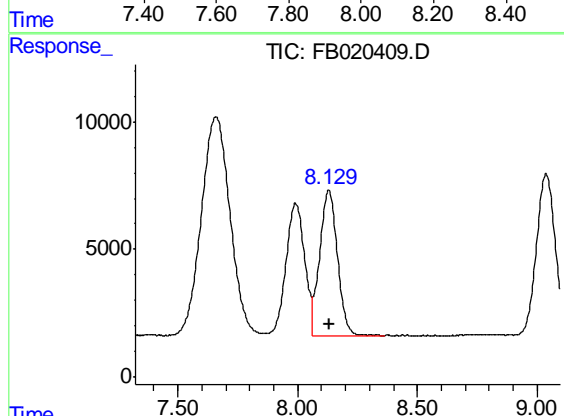
#2 2,2,4-Trimethylpentane

R.T.: 7.659 min  
 Delta R.T.: -0.007 min  
 Response: 716023  
 Conc: 29.86 ng/ml



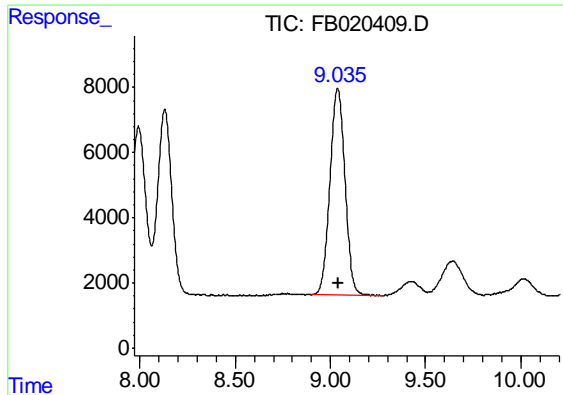
#3 n-Heptane

R.T.: 7.992 min  
 Delta R.T.: -0.003 min  
 Response: 282301  
 Conc: 8.63 ng/ml



#4 Benzene

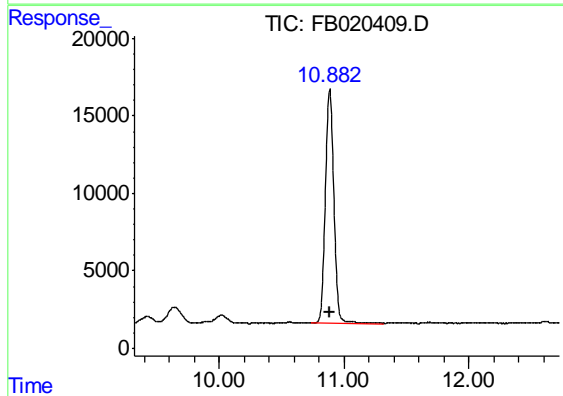
R.T.: 8.130 min  
 Delta R.T.: -0.003 min  
 Response: 293766  
 Conc: 8.48 ng/ml



#5 AAA-TFT

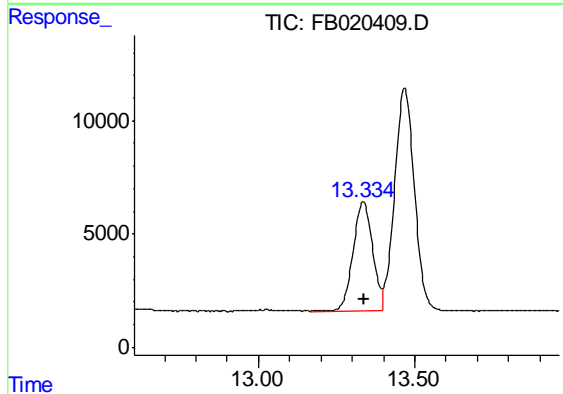
R.T.: 9.037 min  
 Delta R.T.: -0.003 min  
 Response: 348297  
 Conc: 18.08 ng/ml

Instrument :  
 FID\_B  
 ClientSampleId :  
 20 PPB GRO STD



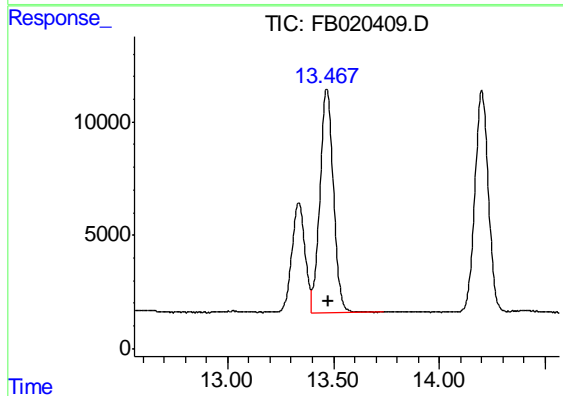
#6 Toluene

R.T.: 10.884 min  
 Delta R.T.: -0.004 min  
 Response: 707022  
 Conc: 27.26 ng/ml



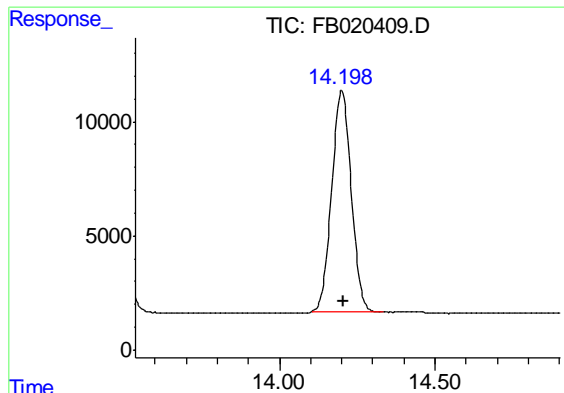
#7 Ethylbenzene

R.T.: 13.336 min  
 Delta R.T.: -0.004 min  
 Response: 210447  
 Conc: 10.69 ng/ml



#8 m-Xylene

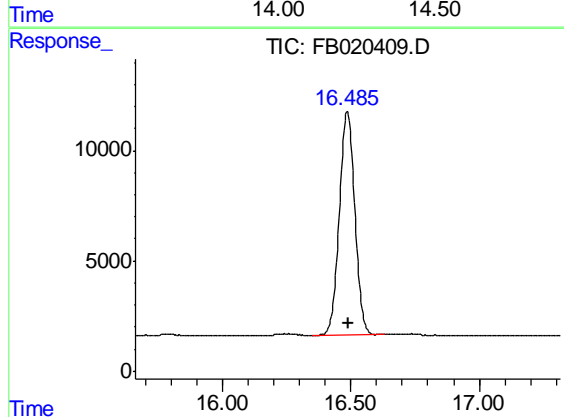
R.T.: 13.469 min  
 Delta R.T.: -0.005 min  
 Response: 435595  
 Conc: 21.45 ng/ml



#9 O-Xylene

R.T.: 14.200 min  
Delta R.T.: -0.004 min  
Response: 425096  
Conc: 20.99 ng/ml

Instrument :  
FID\_B  
ClientSampleId :  
20 PPB GRO STD



#10 1,2,4-Trimethylbenzene

R.T.: 16.486 min  
Delta R.T.: -0.005 min  
Response: 426822  
Conc: 20.51 ng/ml