

Data Path : Z:\pestpcbsrv\HPCHEM1\FID\_B\Data\FB032819\  
Data File : FB020429.D  
Signal(s) : FID2B.CH  
Acq On : 28 Mar 2019 20:43  
Operator : MJ/SJ  
Sample : K2115-02 10X  
Misc :  
ALS Vial : 21 Sample Multiplier: 1

Instrument :  
FID\_B  
ClientSampleId :  
QNWP8-MW30D-GW

Integration File: Calibration.e  
Quant Time: Mar 29 01:04:45 2019  
Quant Method : Z:\pestpcbsrv\HPCHEM1\FID\_B\Method\FB032619.M  
Quant Title :  
QLast Update : Tue Mar 26 12:48:09 2019  
Response via : Initial Calibration  
Integrator: ChemStation

Volume Inj. : 5 g/ml  
Signal Phase : RTX-502.2  
Signal Info : 60mx0.53mmx3.00um

Compound	R.T.	Response	Conc Units
-----			
System Monitoring Compounds			
5) s AAA-TFT	9.044	385438	20.006 ng/ml

Target Compounds

-----

(f)=RT Delta > 1/2 Window

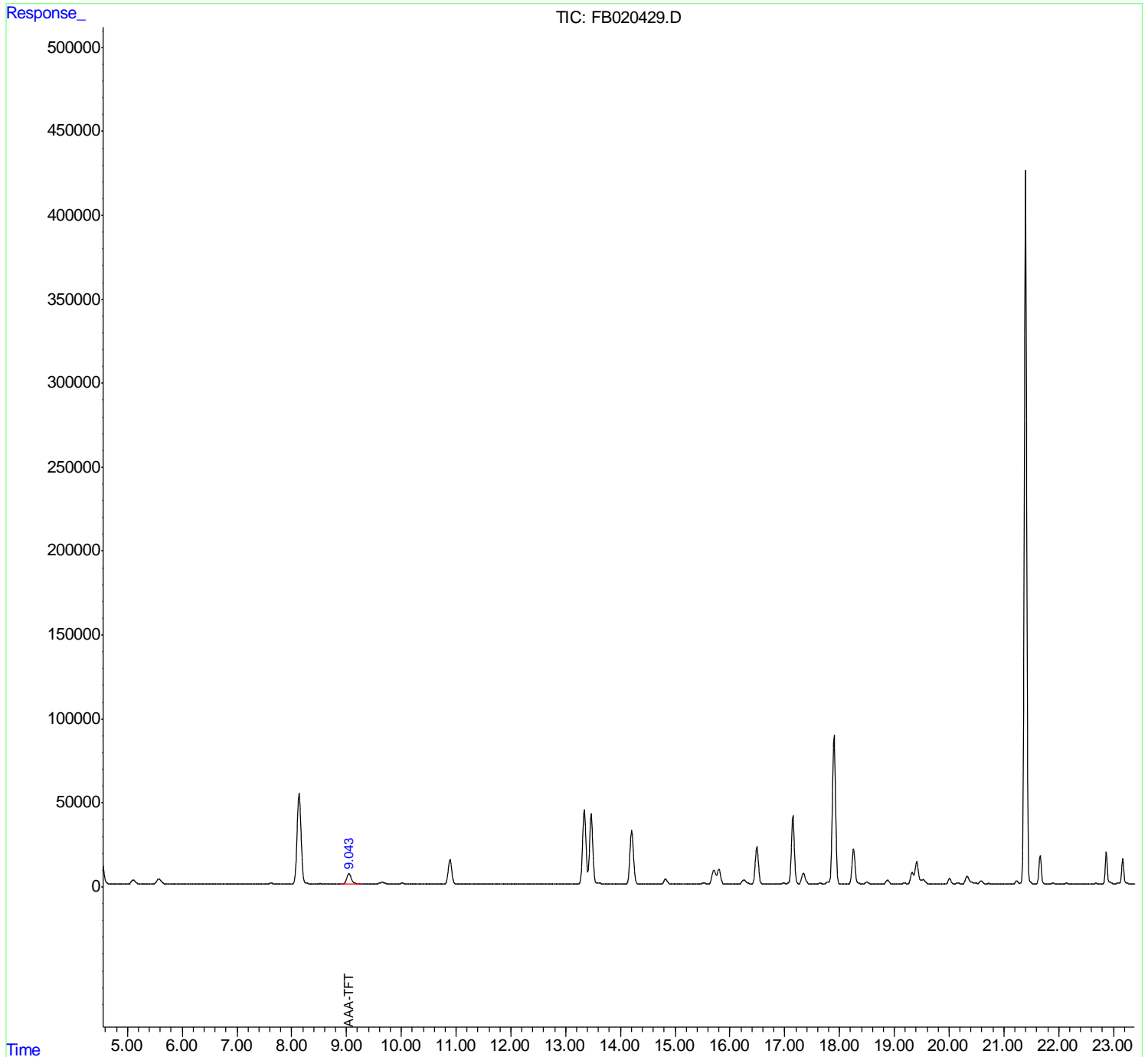
(m)=manual int.

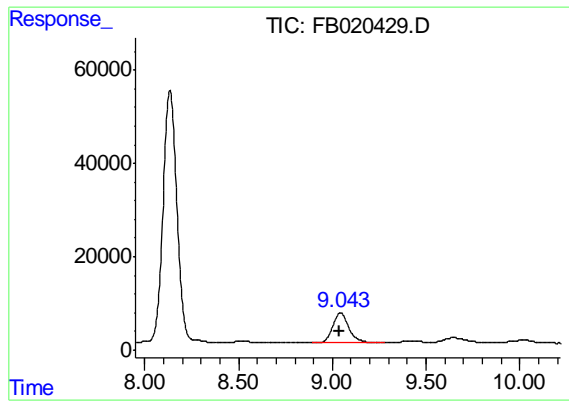
Data Path : Z:\pestpcbsrv\HPCHEM1\FID\_B\Data\FB032819\  
Data File : FB020429.D  
Signal(s) : FID2B.CH  
Acq On : 28 Mar 2019 20:43  
Operator : MJ/SJ  
Sample : K2115-02 10X  
Misc :  
ALS Vial : 21 Sample Multiplier: 1

Instrument :  
FID\_B  
ClientSampleId :  
QNWP8-MW30D-GW

Integration File: Calibration.e  
Quant Time: Mar 29 01:04:45 2019  
Quant Method : Z:\pestpcbsrv\HPCHEM1\FID\_B\Method\FB032619.M  
Quant Title :  
QLast Update : Tue Mar 26 12:48:09 2019  
Response via : Initial Calibration  
Integrator: ChemStation

Volume Inj. : 5 g/ml  
Signal Phase : RTX-502.2  
Signal Info : 60mx0.53mmx3.00um





#5 AAA-TFT

R.T.: 9.044 min  
Delta R.T.: 0.003 min  
Response: 385438  
Conc: 20.01 ng/ml

Instrument :  
FID\_B  
ClientSampleId :  
QNWP8-MW30D-GW