

Data Path : Z:\pestpcbsrv\HPCHEM1\FID_B\Data\FB040220\
 Data File : FB024049.D
 Signal(s) : FID2B.CH
 Acq On : 2 Apr 2020 14:18
 Operator : DD/AJ
 Sample : BSF0402S1
 Misc : 5.01g/5.00ml DI WATER
 ALS Vial : 3 Sample Multiplier: 1

Instrument :
 FID_B
 ClientSampleId :

Integration File: Calibration.e
 Quant Time: Apr 02 18:34:47 2020
 Quant Method : Z:\pestpcbsrv\HPCHEM1\FID_B\Method\FB032620.M
 Quant Title :
 QLast Update : Fri Mar 27 11:16:49 2020
 Response via : Initial Calibration
 Integrator: ChemStation

Volume Inj. : 5 g/ml
 Signal Phase : RTX-502.2
 Signal Info : 60mx0.53mmx3.00um

Compound	R.T.	Response	Conc Units

System Monitoring Compounds			
5) s AAA-TFT	8.800	487373	21.338 ng/ml
Target Compounds			
1) t 2-Methylpentane	4.691	1048129	30.284 ng/ml
2) t 2,2,4-Trimethylpentane	7.418	1169430	31.865 ng/ml
3) t n-Heptane	7.759	381384	10.574 ng/ml
4) t Benzene	7.893	465643	10.499 ng/ml
6) t Toluene	10.631	1357242	30.795 ng/ml
7) t Ethylbenzene	13.072	411199	10.319 ng/ml
8) t m-Xylene	13.205	798167	20.751 ng/ml
9) t O-Xylene	13.933	761785	20.610 ng/ml
10) t 1,2,4-Trimethylbenzene	16.211	656663	20.664 ng/ml

(f)=RT Delta > 1/2 Window

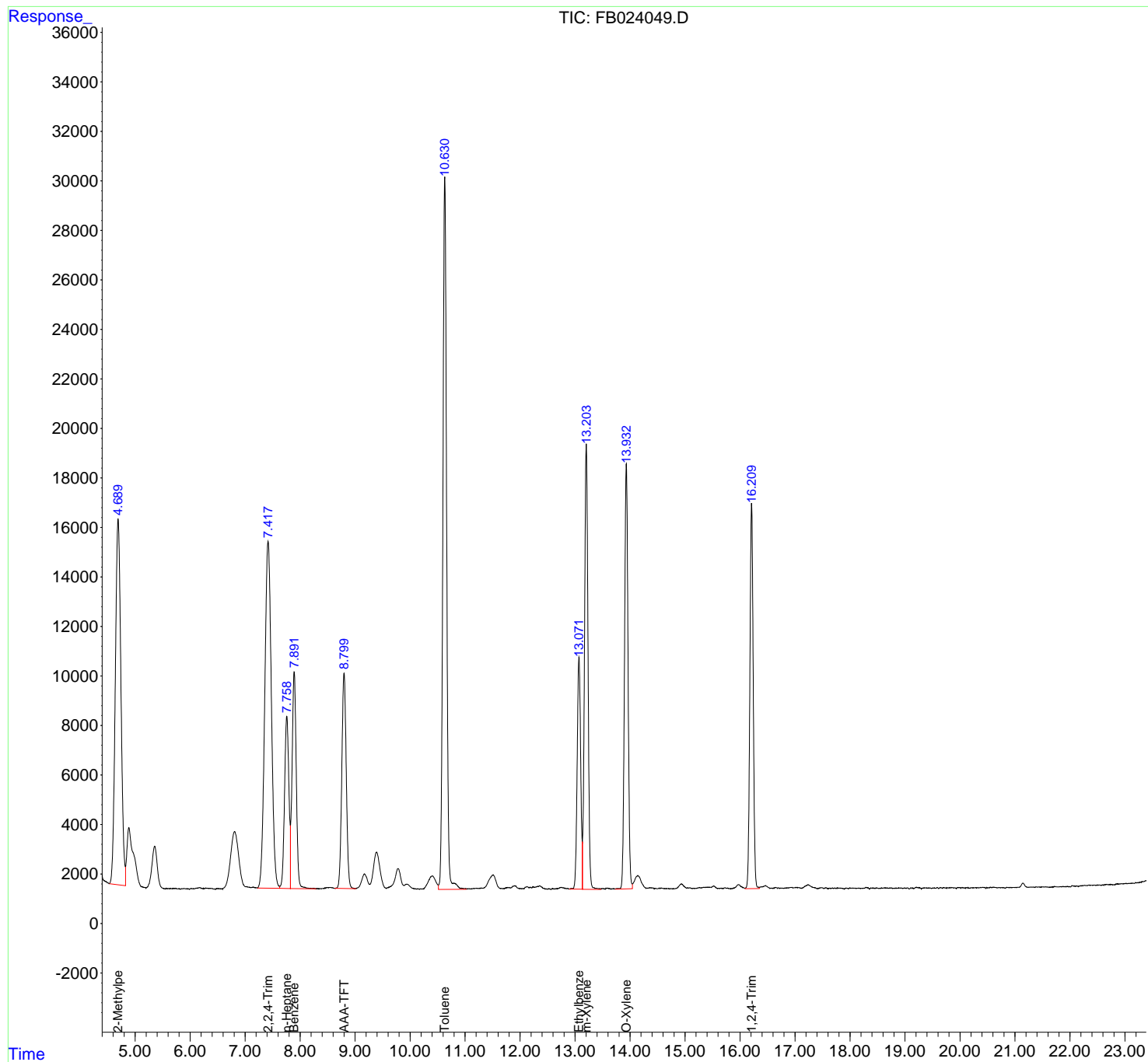
(m)=manual int.

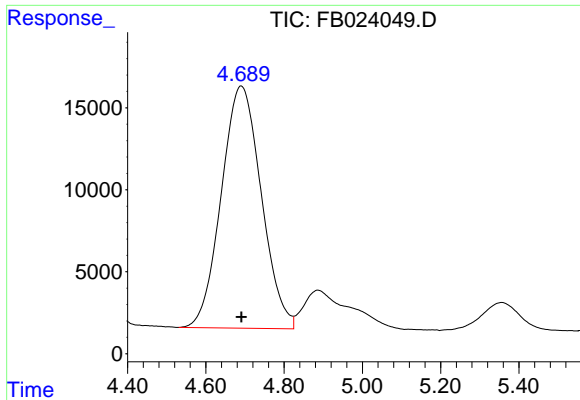
Data Path : Z:\pestpcbsrv\HPCHEM1\FID_B\Data\FB040220\
Data File : FB024049.D
Signal(s) : FID2B.CH
Acq On : 2 Apr 2020 14:18
Operator : DD/AJ
Sample : BSF0402S1
Misc : 5.01g/5.00ml DI WATER
ALS Vial : 3 Sample Multiplier: 1

Instrument :
FID_B
ClientSampled :

Integration File: Calibration.e
Quant Time: Apr 02 18:34:47 2020
Quant Method : Z:\pestpcbsrv\HPCHEM1\FID_B\Method\FB032620.M
Quant Title :
QLast Update : Fri Mar 27 11:16:49 2020
Response via : Initial Calibration
Integrator: ChemStation

Volume Inj. : 5 g/ml
Signal Phase : RTX-502.2
Signal Info : 60mx0.53mmx3.00um

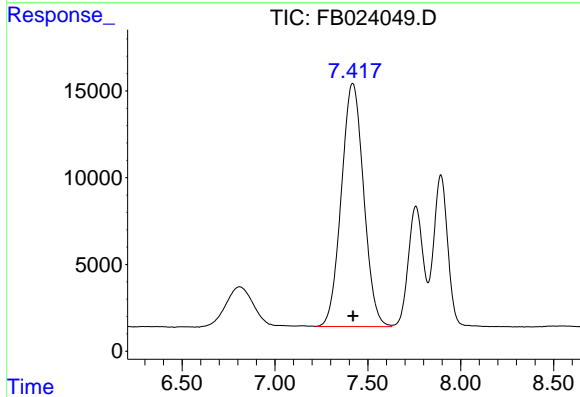




#1 2-Methylpentane

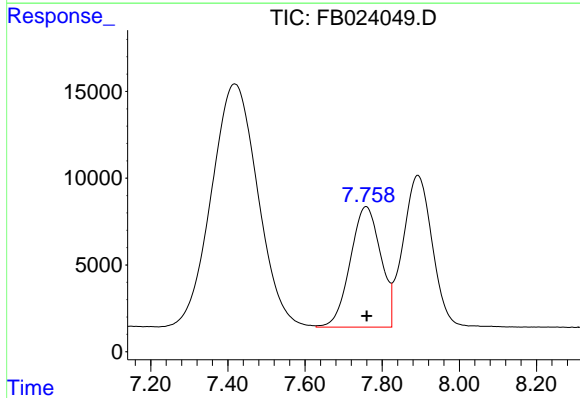
R.T.: 4.691 min
 Delta R.T.: 0.000 min
 Response: 1048129
 Conc: 30.28 ng/ml

Instrument :
 FID_B
 ClientSampled :



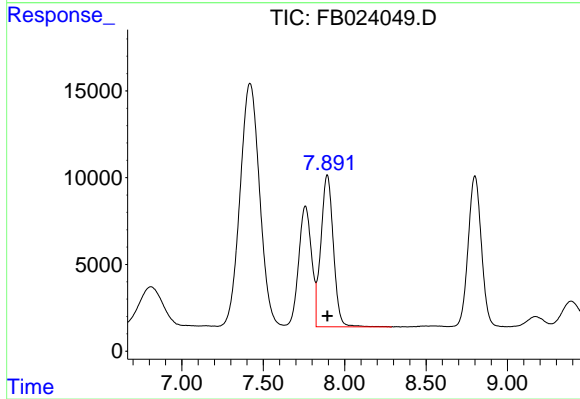
#2 2,2,4-Trimethylpentane

R.T.: 7.418 min
 Delta R.T.: -0.002 min
 Response: 1169430
 Conc: 31.86 ng/ml



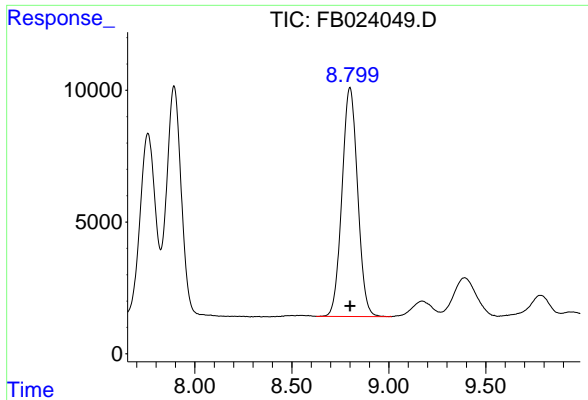
#3 n-Heptane

R.T.: 7.759 min
 Delta R.T.: -0.001 min
 Response: 381384
 Conc: 10.57 ng/ml



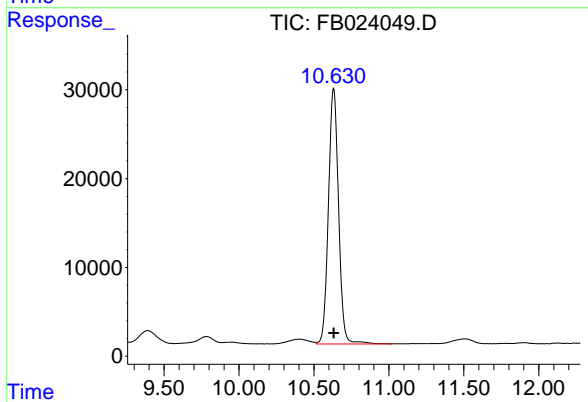
#4 Benzene

R.T.: 7.893 min
 Delta R.T.: -0.001 min
 Response: 465643
 Conc: 10.50 ng/ml

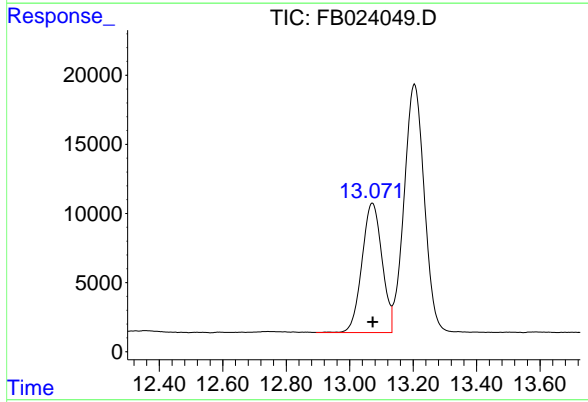


#5 AAA-TFT
 R.T.: 8.800 min
 Delta R.T.: -0.001 min
 Response: 487373
 Conc: 21.34 ng/ml

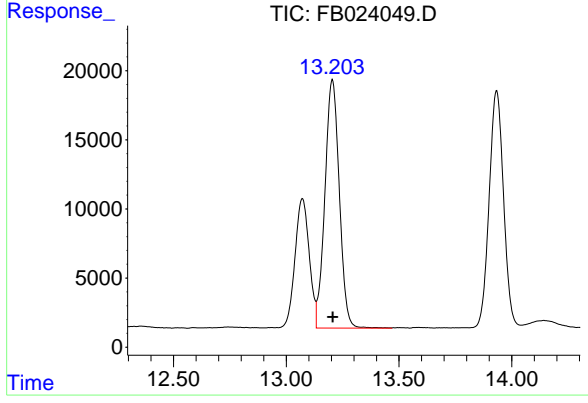
Instrument :
 FID_B
 ClientSampleId :



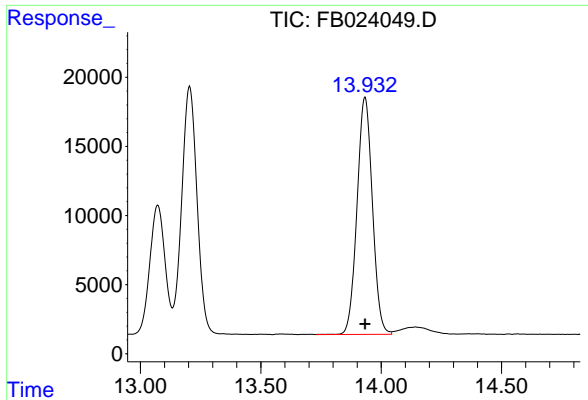
#6 Toluene
 R.T.: 10.631 min
 Delta R.T.: -0.001 min
 Response: 1357242
 Conc: 30.80 ng/ml



#7 Ethylbenzene
 R.T.: 13.072 min
 Delta R.T.: 0.000 min
 Response: 411199
 Conc: 10.32 ng/ml

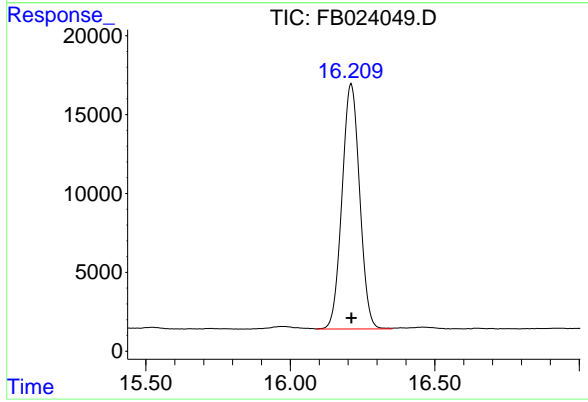


#8 m-Xylene
 R.T.: 13.205 min
 Delta R.T.: -0.001 min
 Response: 798167
 Conc: 20.75 ng/ml



#9 O-Xylene
R.T.: 13.933 min
Delta R.T.: 0.000 min
Response: 761785
Conc: 20.61 ng/ml

Instrument :
FID_B
ClientSampled :



#10 1,2,4-Trimethylbenzene
R.T.: 16.211 min
Delta R.T.: 0.000 min
Response: 656663
Conc: 20.66 ng/ml