

Data Path : Z:\pestpcbsrv\HPCHEM1\FID_B\Data\FB040419\
 Data File : FB020528.D
 Signal(s) : FID2B.CH
 Acq On : 4 Apr 2019 15:26
 Operator : MJ/SJ
 Sample : 10 GRO STD
 Misc :
 ALS Vial : 2 Sample Multiplier: 1

Instrument :
 FID_B
 ClientSampleId :
 10 GRO STD

Integration File: Calibration.e
 Quant Time: Apr 04 17:24:37 2019
 Quant Method : Z:\pestpcbsrv\HPCHEM1\FID_B\Method\FB040419.M
 Quant Title :
 QLast Update : Thu Apr 04 17:23:52 2019
 Response via : Initial Calibration
 Integrator: ChemStation

Volume Inj. : 5 g/ml
 Signal Phase : RTX-502.2
 Signal Info : 60mx0.53mmx3.00um

Compound	R.T.	Response	Conc Units

System Monitoring Compounds			
5) s AAA-TFT	9.000	192410	10.413 ng/ml
Target Compounds			
1) t 2-Methylpentane	4.870	566399	15.415 ng/ml
2) t 2,2,4-Trimethylpentane	7.627	476123	15.552 ng/ml
3) t n-Heptane	7.956	204548	5.043 ng/ml
4) t Benzene	8.091	213529	5.097 ng/ml
6) t Toluene	10.843	476615	15.732 ng/ml
7) t Ethylbenzene	13.293	129902	5.014 ng/ml
8) t m-Xylene	13.426	266737	9.999 ng/ml
9) t O-Xylene	14.157	267882	9.812 ng/ml
10) t 1,2,4-Trimethylbenzene	16.441	256737	9.318 ng/ml

(f)=RT Delta > 1/2 Window

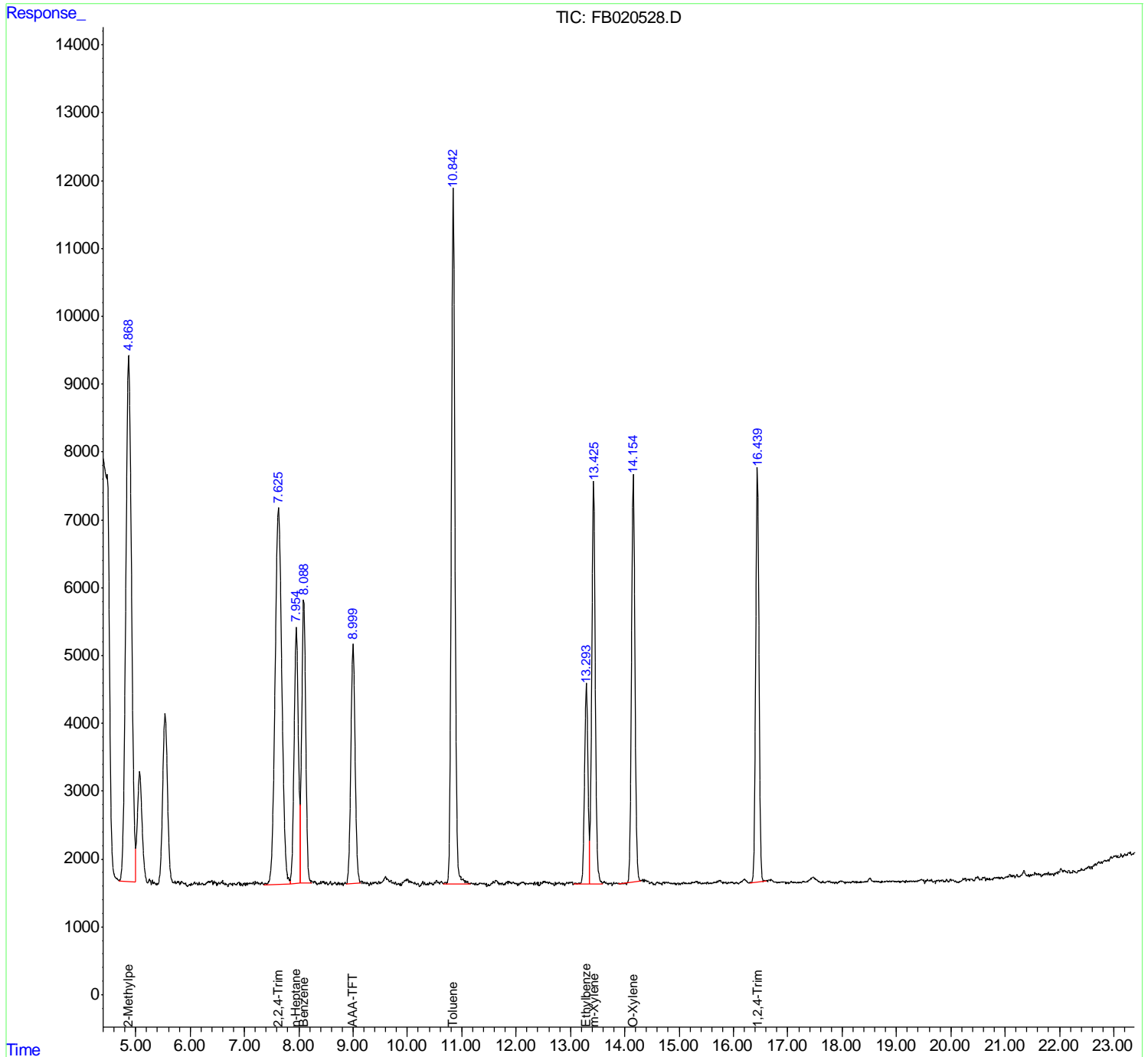
(m)=manual int.

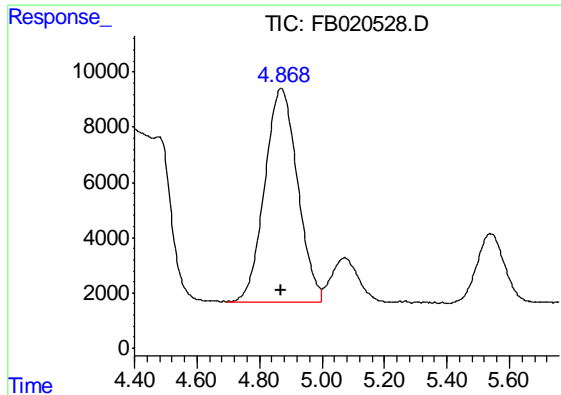
Data Path : Z:\pestpcbsrv\HPCHEM1\FID_B\Data\FB040419\
 Data File : FB020528.D
 Signal(s) : FID2B.CH
 Acq On : 4 Apr 2019 15:26
 Operator : MJ/SJ
 Sample : 10 GRO STD
 Misc :
 ALS Vial : 2 Sample Multiplier: 1

Instrument :
 FID_B
 ClientSampleId :
 10 GRO STD

Integration File: Calibration.e
 Quant Time: Apr 04 17:24:37 2019
 Quant Method : Z:\pestpcbsrv\HPCHEM1\FID_B\Method\FB040419.M
 Quant Title :
 QLast Update : Thu Apr 04 17:23:52 2019
 Response via : Initial Calibration
 Integrator: ChemStation

Volume Inj. : 5 g/ml
 Signal Phase : RTX-502.2
 Signal Info : 60mx0.53mmx3.00um

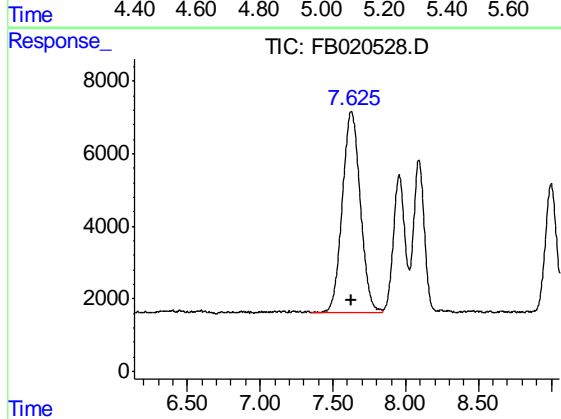




#1 2-Methylpentane

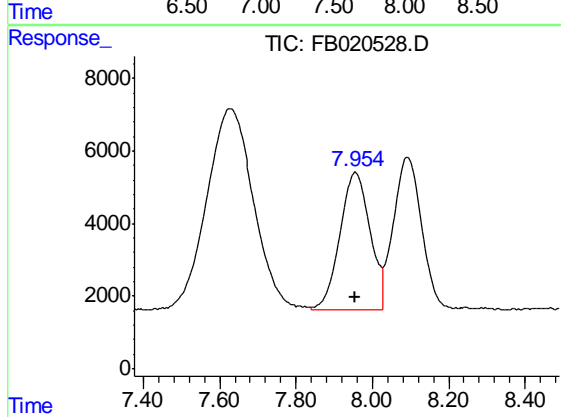
R.T.: 4.870 min
 Delta R.T.: 0.000 min
 Response: 566399
 Conc: 15.42 ng/ml

Instrument :
 FID_B
 ClientSampleId :
 10 GRO STD



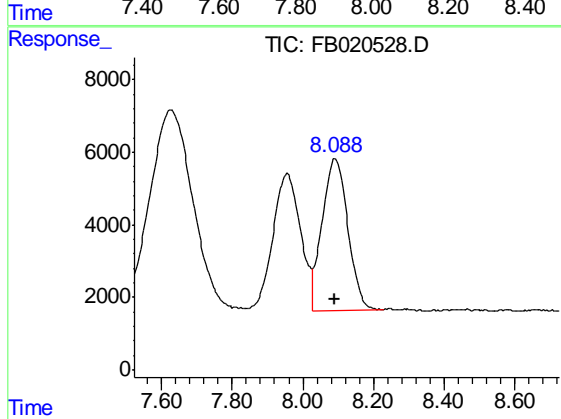
#2 2,2,4-Trimethylpentane

R.T.: 7.627 min
 Delta R.T.: 0.000 min
 Response: 476123
 Conc: 15.55 ng/ml



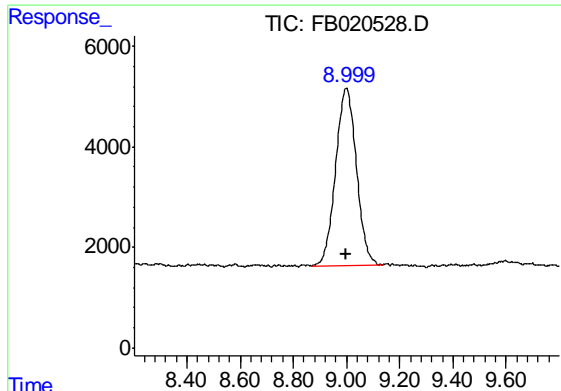
#3 n-Heptane

R.T.: 7.956 min
 Delta R.T.: 0.000 min
 Response: 204548
 Conc: 5.04 ng/ml



#4 Benzene

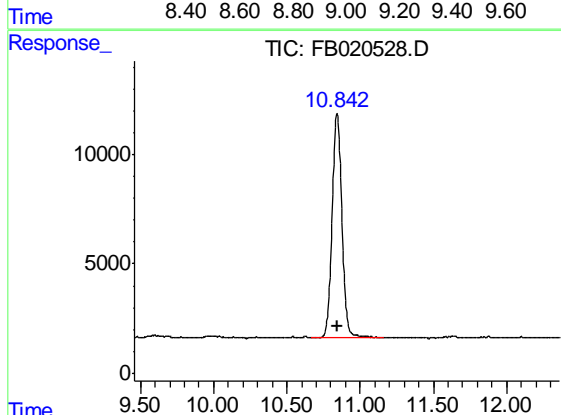
R.T.: 8.091 min
 Delta R.T.: 0.000 min
 Response: 213529
 Conc: 5.10 ng/ml



#5 AAA-TFT

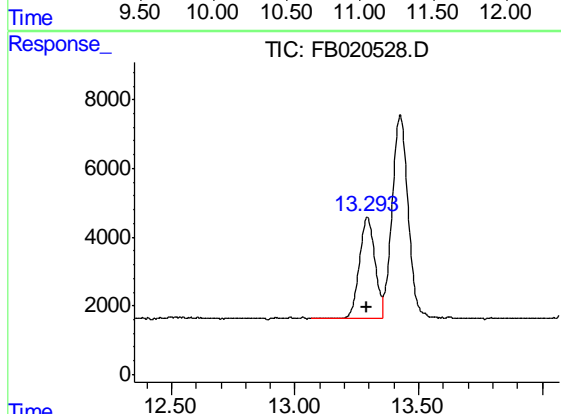
R.T.: 9.000 min
 Delta R.T.: 0.000 min
 Response: 192410
 Conc: 10.41 ng/ml

Instrument :
 FID_B
 ClientSampleId :
 10 GRO STD



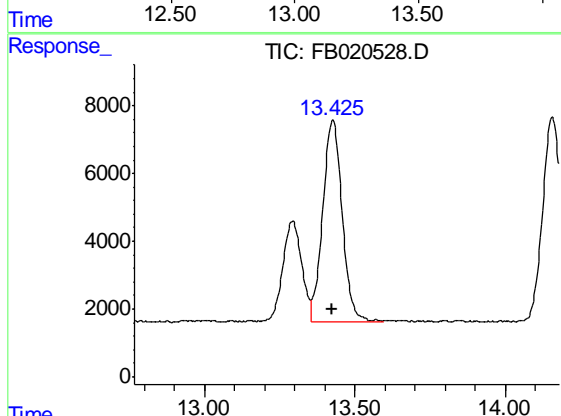
#6 Toluene

R.T.: 10.843 min
 Delta R.T.: 0.000 min
 Response: 476615
 Conc: 15.73 ng/ml



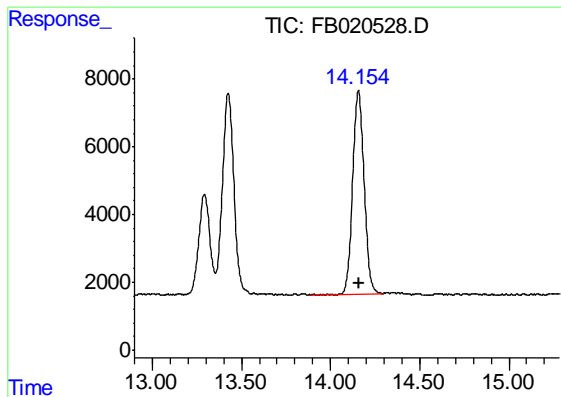
#7 Ethylbenzene

R.T.: 13.293 min
 Delta R.T.: 0.000 min
 Response: 129902
 Conc: 5.01 ng/ml



#8 m-Xylene

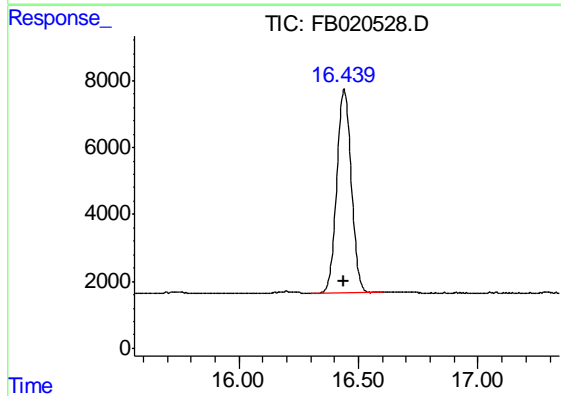
R.T.: 13.426 min
 Delta R.T.: 0.000 min
 Response: 266737
 Conc: 10.00 ng/ml



#9 O-Xylene

R.T.: 14.157 min
Delta R.T.: 0.000 min
Response: 267882
Conc: 9.81 ng/ml

Instrument :
FID_B
ClientSampleId :
10 GRO STD



#10 1,2,4-Trimethylbenzene

R.T.: 16.441 min
Delta R.T.: 0.000 min
Response: 256737
Conc: 9.32 ng/ml