

Data Path : Z:\pestpcbsrv\HPCHEM1\FID_B\Data\FB040419\
 Data File : FB020531.D
 Signal(s) : FID2B.CH
 Acq On : 4 Apr 2019 16:57
 Operator : MJ/SJ
 Sample : 100 GRO STD
 Misc :
 ALS Vial : 5 Sample Multiplier: 1

Instrument :
 FID_B
 ClientSampleId :
 100 GRO STD

Integration File: Calibration.e
 Quant Time: Apr 04 17:24:49 2019
 Quant Method : Z:\pestpcbsrv\HPCHEM1\FID_B\Method\FB040419.M
 Quant Title :
 QLast Update : Thu Apr 04 17:23:52 2019
 Response via : Initial Calibration
 Integrator: ChemStation

Volume Inj. : 5 g/ml
 Signal Phase : RTX-502.2
 Signal Info : 60mx0.53mmx3.00um

Compound	R.T.	Response	Conc Units

System Monitoring Compounds			
5) s AAA-TFT	8.998	1912462	103.497 ng/ml
Target Compounds			
1) t 2-Methylpentane	4.866	5372156	146.210 ng/ml
2) t 2,2,4-Trimethylpentane	7.635	4304880	140.617 ng/ml
3) t n-Heptane	7.954	2060884	50.808 ng/ml
4) t Benzene	8.090	2194252	52.379 ng/ml
6) t Toluene	10.842	4584418	151.321 ng/ml
7) t Ethylbenzene	13.293	1212736	46.809 ng/ml
8) t m-Xylene	13.426	2526619	94.717 ng/ml
9) t O-Xylene	14.157	2610465	95.619 ng/ml
10) t 1,2,4-Trimethylbenzene	16.441	2518458	91.402 ng/ml

(f)=RT Delta > 1/2 Window

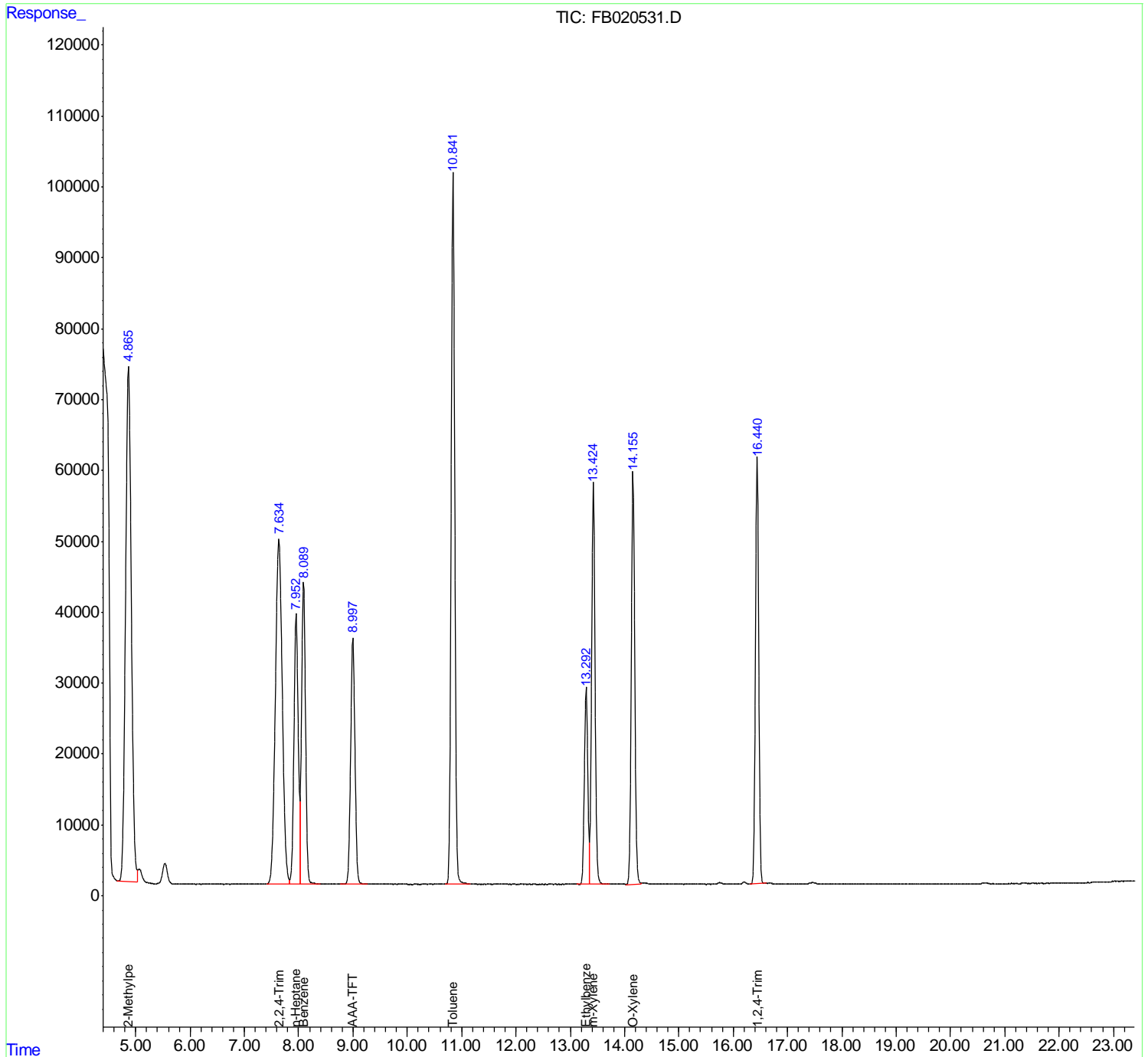
(m)=manual int.

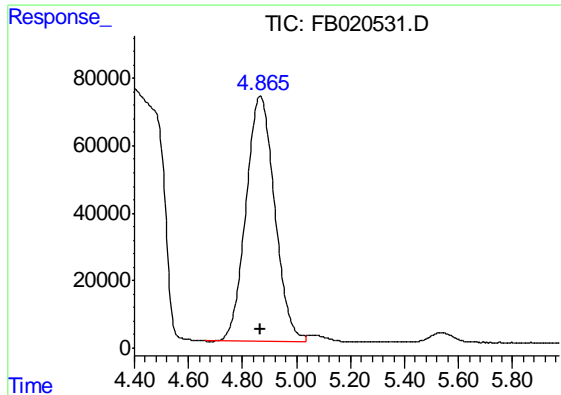
Data Path : Z:\pestpcbsrv\HPCHEM1\FID_B\Data\FB040419\
 Data File : FB020531.D
 Signal(s) : FID2B.CH
 Acq On : 4 Apr 2019 16:57
 Operator : MJ/SJ
 Sample : 100 GRO STD
 Misc :
 ALS Vial : 5 Sample Multiplier: 1

Instrument :
 FID_B
 ClientSampleId :
 100 GRO STD

Integration File: Calibration.e
 Quant Time: Apr 04 17:24:49 2019
 Quant Method : Z:\pestpcbsrv\HPCHEM1\FID_B\Method\FB040419.M
 Quant Title :
 QLast Update : Thu Apr 04 17:23:52 2019
 Response via : Initial Calibration
 Integrator: ChemStation

Volume Inj. : 5 g/ml
 Signal Phase : RTX-502.2
 Signal Info : 60mx0.53mmx3.00um

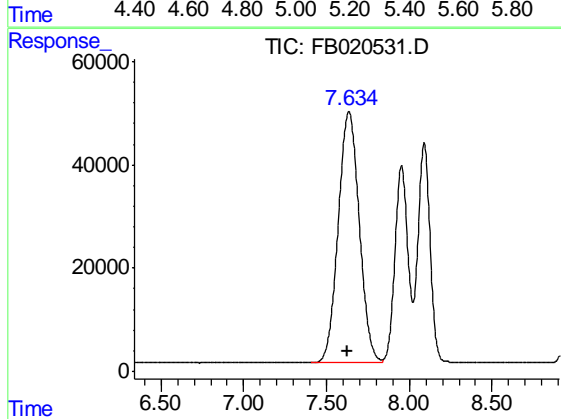




#1 2-Methylpentane

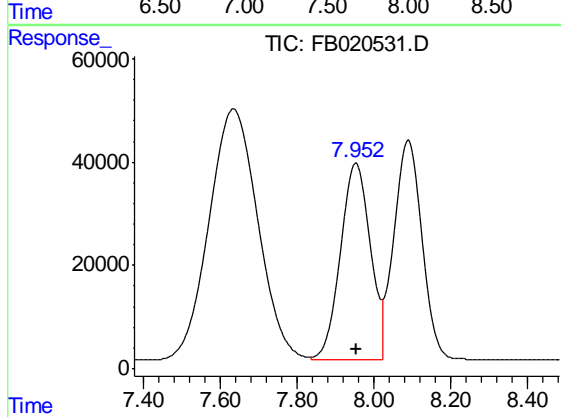
R.T.: 4.866 min
 Delta R.T.: -0.003 min
 Response: 5372156
 Conc: 146.21 ng/ml

Instrument :
 FID_B
 ClientSampleId :
 100 GRO STD



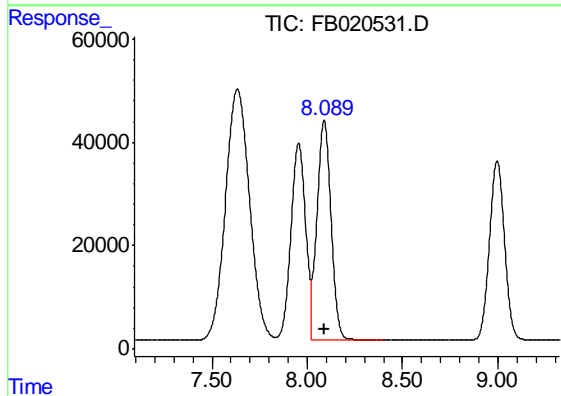
#2 2,2,4-Trimethylpentane

R.T.: 7.635 min
 Delta R.T.: 0.009 min
 Response: 4304880
 Conc: 140.62 ng/ml



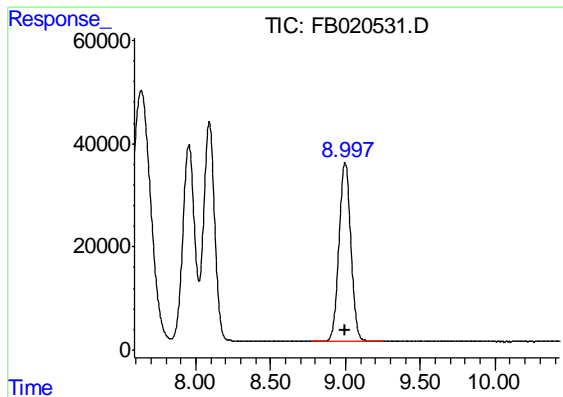
#3 n-Heptane

R.T.: 7.954 min
 Delta R.T.: -0.002 min
 Response: 2060884
 Conc: 50.81 ng/ml



#4 Benzene

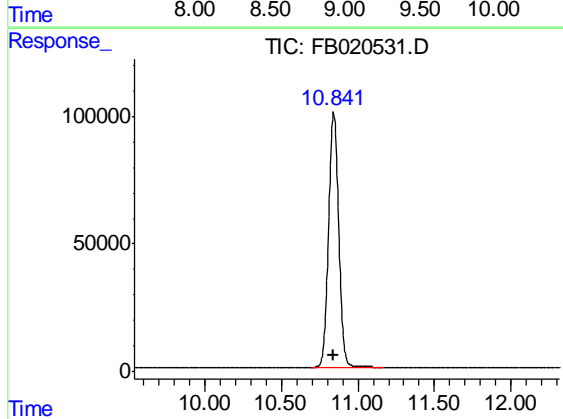
R.T.: 8.090 min
 Delta R.T.: 0.000 min
 Response: 2194252
 Conc: 52.38 ng/ml



#5 AAA-TFT

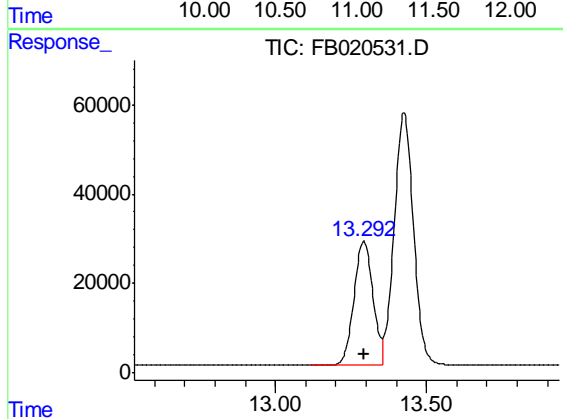
R.T.: 8.998 min
 Delta R.T.: 0.000 min
 Response: 1912462
 Conc: 103.50 ng/ml

Instrument :
 FID_B
 ClientSampleId :
 100 GRO STD



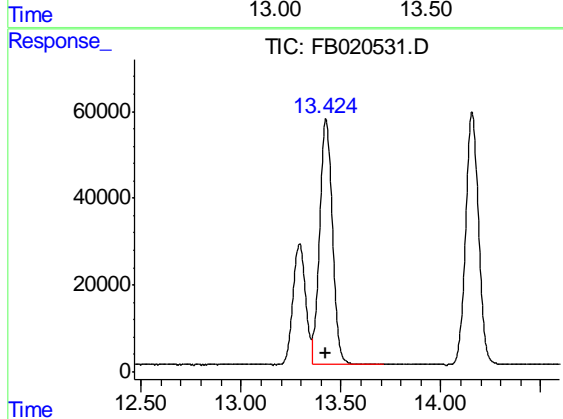
#6 Toluene

R.T.: 10.842 min
 Delta R.T.: 0.000 min
 Response: 4584418
 Conc: 151.32 ng/ml



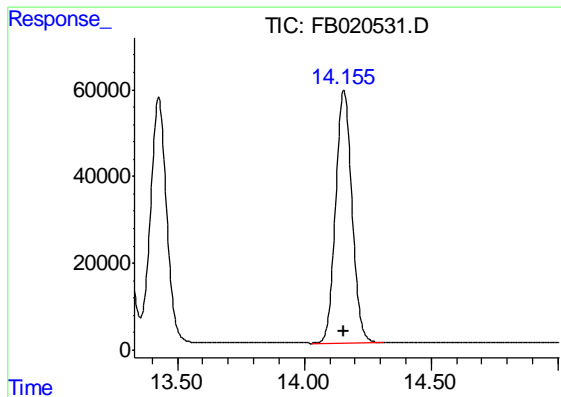
#7 Ethylbenzene

R.T.: 13.293 min
 Delta R.T.: 0.000 min
 Response: 1212736
 Conc: 46.81 ng/ml



#8 m-Xylene

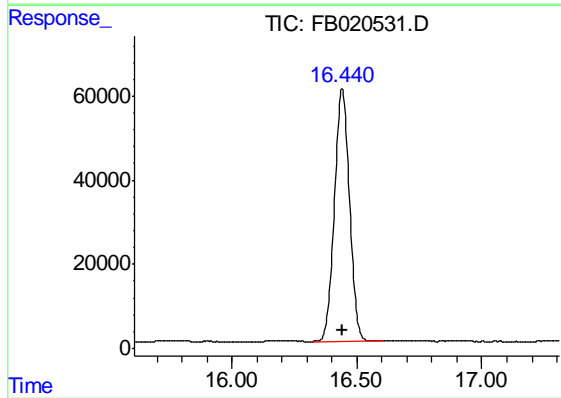
R.T.: 13.426 min
 Delta R.T.: 0.000 min
 Response: 2526619
 Conc: 94.72 ng/ml



#9 O-Xylene

R.T.: 14.157 min
Delta R.T.: 0.000 min
Response: 2610465
Conc: 95.62 ng/ml

Instrument :
FID_B
ClientSampleId :
100 GRO STD



#10 1,2,4-Trimethylbenzene

R.T.: 16.441 min
Delta R.T.: 0.000 min
Response: 2518458
Conc: 91.40 ng/ml