

Data Path : Z:\pestpcbsrv\HPCHEM1\FID_B\Data\FB040722\
 Data File : FB026861.D
 Signal(s) : FID2B.CH
 Acq On : 7 Apr 2022 15:34
 Operator : AJ/MA
 Sample : N2254-05 50X
 Misc : 5.06G/5.00 ML DI WATER
 ALS Vial : 9 Sample Multiplier: 1

Instrument :
 FID_B
ClientSampleId :
 WC-14A-1A-4-3

Integration File: SAMPLE.e
 Quant Time: Apr 08 04:32:25 2022
 Quant Method : Z:\pestpcbsrv\HPCHEM1\FID_B\Method\FB030822.M
 Quant Title :
 QLast Update : Fri Mar 11 13:08:49 2022
 Response via : Initial Calibration
 Integrator: ChemStation

Volume Inj. : 5 g/ml
 Signal Phase : RTX-502.2
 Signal Info : 60mx0.53mmx3.00um

Compound	R.T.	Response	Conc Units

System Monitoring Compounds			
5) s AAA-TFT	8.859	4003013	381.478 ng/ml
Target Compounds			

(f)=RT Delta > 1/2 Window

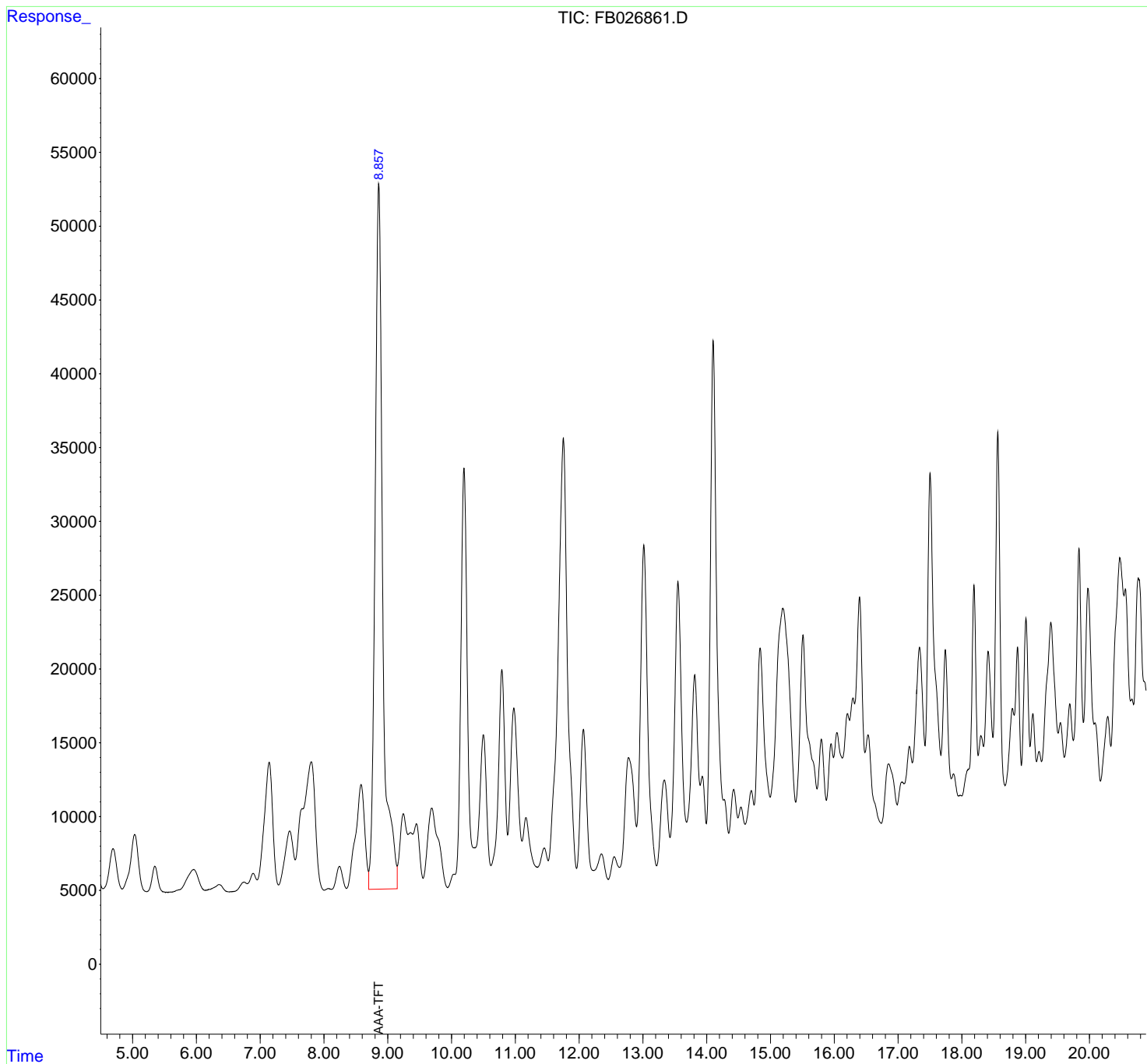
(m)=manual int.

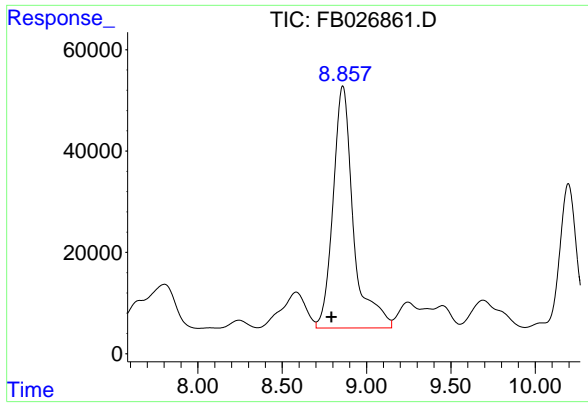
Data Path : Z:\pestpcbsrv\HPCHEM1\FID_B\Data\FB040722\
 Data File : FB026861.D
 Signal(s) : FID2B.CH
 Acq On : 7 Apr 2022 15:34
 Operator : AJ/MA
 Sample : N2254-05 50X
 Misc : 5.06G/5.00 ML DI WATER
 ALS Vial : 9 Sample Multiplier: 1

Instrument :
 FID_B
 ClientSampleId :
 WC-14A-1A-4-3

Integration File: SAMPLE.e
 Quant Time: Apr 08 04:32:25 2022
 Quant Method : Z:\pestpcbsrv\HPCHEM1\FID_B\Method\FB030822.M
 Quant Title :
 QLast Update : Fri Mar 11 13:08:49 2022
 Response via : Initial Calibration
 Integrator: ChemStation

Volume Inj. : 5 g/ml
 Signal Phase : RTX-502.2
 Signal Info : 60mx0.53mmx3.00um





#5 AAA-TFT

R.T.: 8.859 min
Delta R.T.: 0.067 min
Response: 4003013
Conc: 381.48 ng/ml

Instrument :
FID_B
ClientSampleId :
WC-14A-1A-4-3