

Data Path : Z:\pestpcbsrv\HPCHEM1\FID\_B\Data\FB041621\  
 Data File : FB025561.D  
 Signal(s) : FID2B.CH  
 Acq On : 16 Apr 2021 13:09  
 Operator : DD/AJ  
 Sample : 50 GRO STD  
 Misc :  
 ALS Vial : 11 Sample Multiplier: 1

Instrument :  
 FID\_B  
 ClientSampleId :

Integration File: Calibration.e  
 Quant Time: Apr 16 13:35:59 2021  
 Quant Method : Z:\pestpcbsrv\HPCHEM1\FID\_B\Method\FB041621.M  
 Quant Title :  
 QLast Update : Fri Apr 16 13:18:26 2021  
 Response via : Initial Calibration  
 Integrator: ChemStation

Volume Inj. : 5 g/ml  
 Signal Phase : RTX-502.2  
 Signal Info : 60mx0.53mmx3.00um

Compound	R.T.	Response	Conc Units
-----			
System Monitoring Compounds			
5) s AAA-TFT	9.243	954253	47.595 ng/ml
Target Compounds			
2) t 2,2,4-Trimethylpentane	7.907	1388409	73.957 ng/ml
3) t n-Heptane	8.221	764451	26.751 ng/ml
4) t Benzene	8.371	966885	25.089 ng/ml
6) t Toluene	11.064	2737272	76.459 ng/ml
7) t Ethylbenzene	13.471	858022	24.929 ng/ml
8) t m-Xylene	13.602	1707708	50.132 ng/ml
9) t O-Xylene	14.325	1636793	50.505 ng/ml
10) t 1,2,4-Trimethylbenzene	16.579	1342157	51.182 ng/ml
-----			

(f)=RT Delta > 1/2 Window

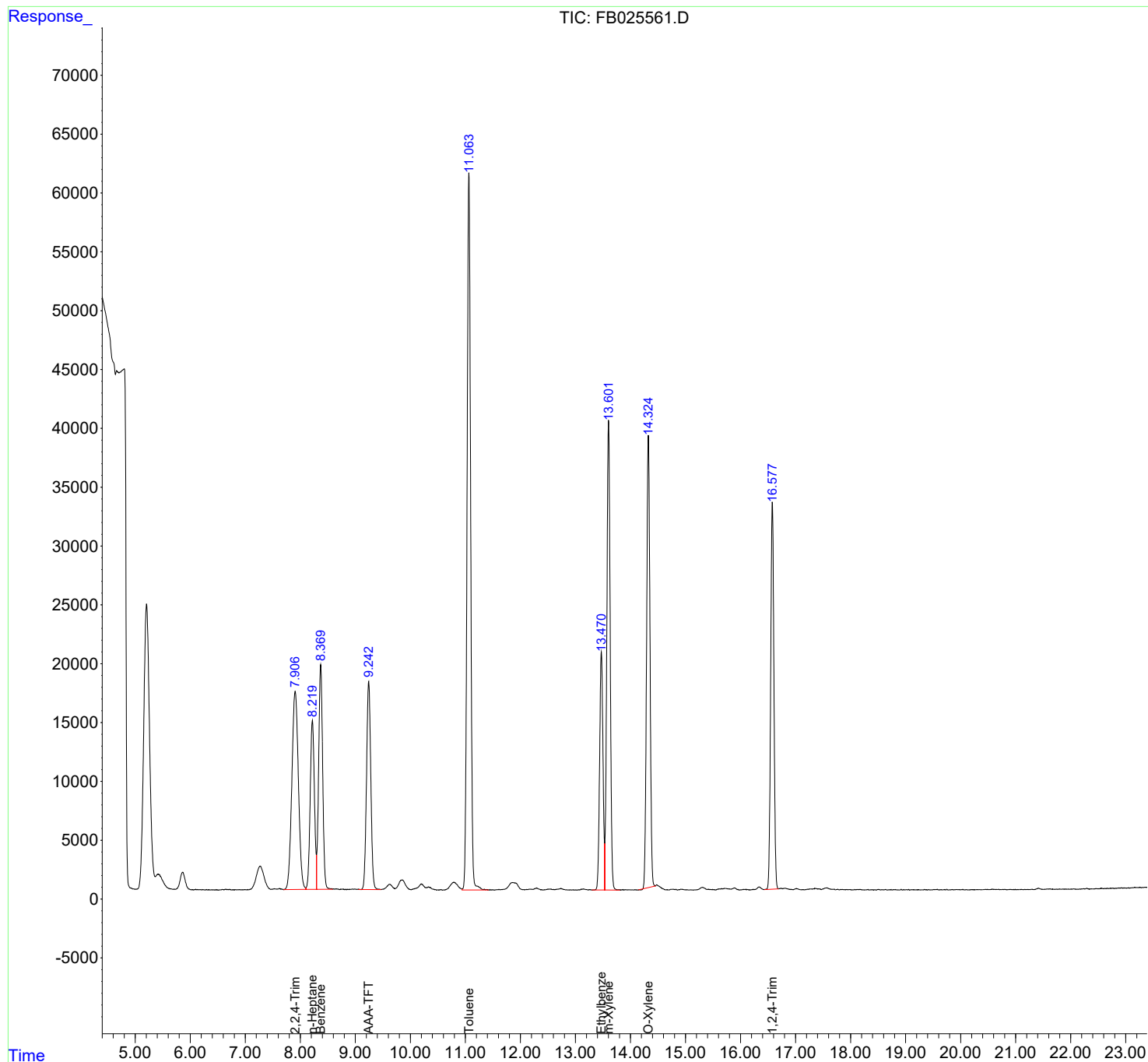
(m)=manual int.

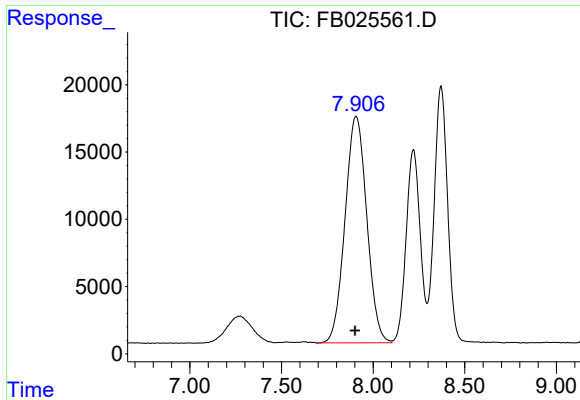
Data Path : Z:\pestpcbsrv\HPCHEM1\FID\_B\Data\FB041621\  
 Data File : FB025561.D  
 Signal(s) : FID2B.CH  
 Acq On : 16 Apr 2021 13:09  
 Operator : DD/AJ  
 Sample : 50 GRO STD  
 Misc :  
 ALS Vial : 11 Sample Multiplier: 1

Instrument :  
 FID\_B  
 ClientSampleId :

Integration File: Calibration.e  
 Quant Time: Apr 16 13:35:59 2021  
 Quant Method : Z:\pestpcbsrv\HPCHEM1\FID\_B\Method\FB041621.M  
 Quant Title :  
 QLast Update : Fri Apr 16 13:18:26 2021  
 Response via : Initial Calibration  
 Integrator: ChemStation

Volume Inj. : 5 g/ml  
 Signal Phase : RTX-502.2  
 Signal Info : 60mx0.53mmx3.00um

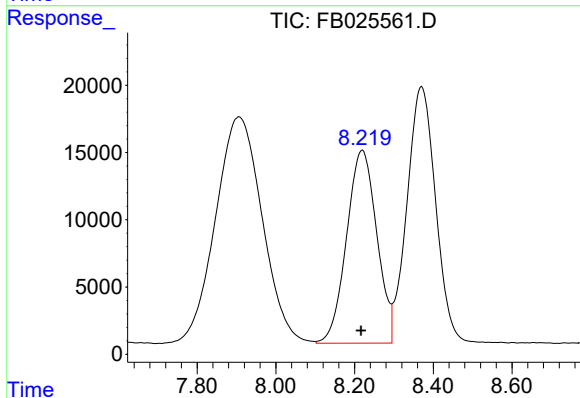




#2 2,2,4-Trimethylpentane

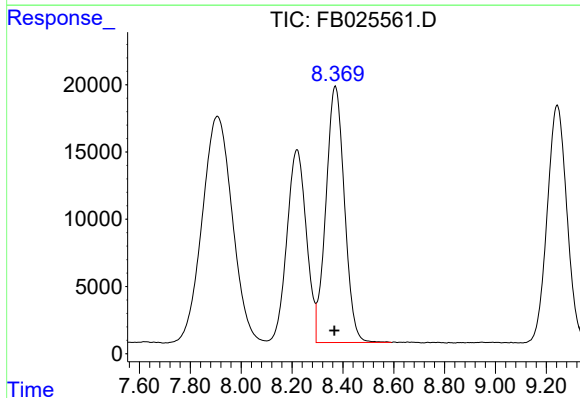
R.T.: 7.907 min  
 Delta R.T.: 0.005 min  
 Response: 1388409  
 Conc: 73.96 ng/ml

Instrument :  
 FID\_B  
 ClientSampled :



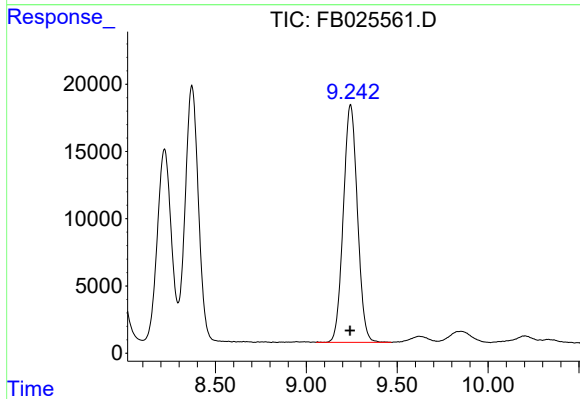
#3 n-Heptane

R.T.: 8.221 min  
 Delta R.T.: 0.004 min  
 Response: 764451  
 Conc: 26.75 ng/ml



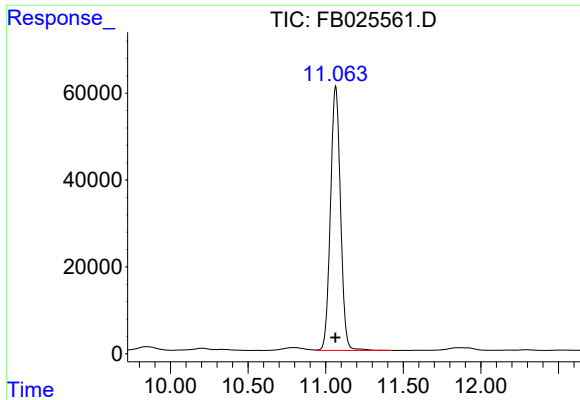
#4 Benzene

R.T.: 8.371 min  
 Delta R.T.: 0.004 min  
 Response: 966885  
 Conc: 25.09 ng/ml



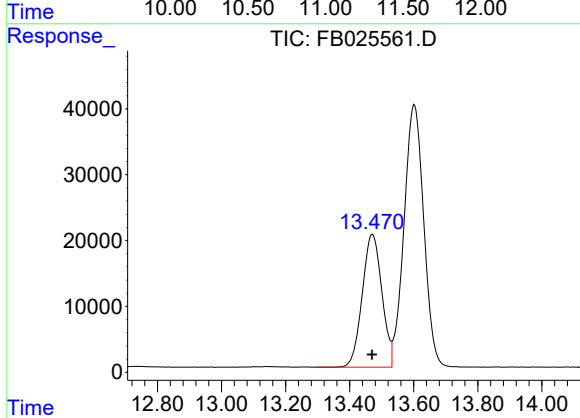
#5 AAA-TFT

R.T.: 9.243 min  
 Delta R.T.: 0.003 min  
 Response: 954253  
 Conc: 47.60 ng/ml

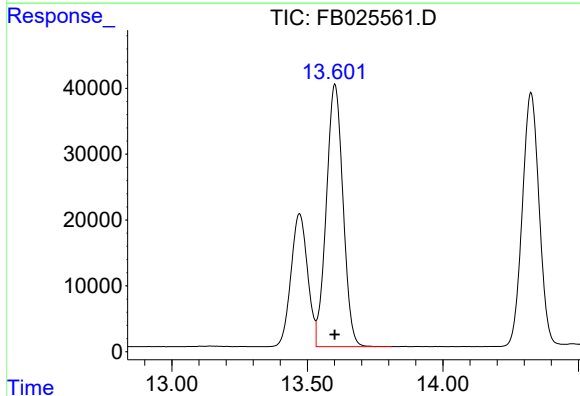


#6 Toluene  
 R.T.: 11.064 min  
 Delta R.T.: 0.002 min  
 Response: 2737272  
 Conc: 76.46 ng/ml

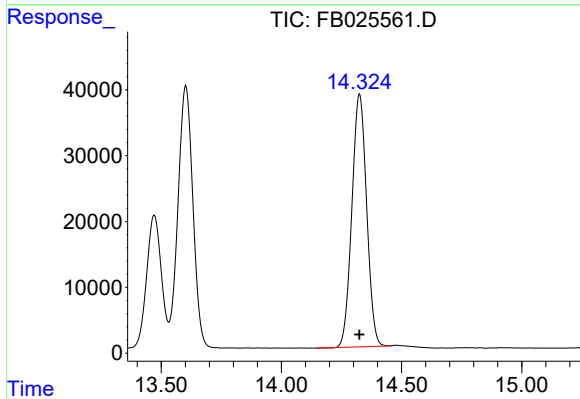
Instrument :  
 FID\_B  
 ClientSampled :



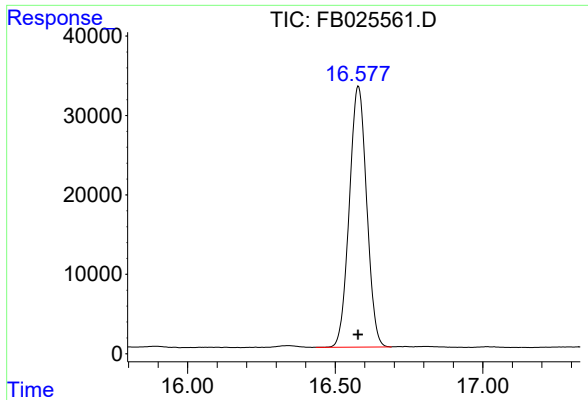
#7 Ethylbenzene  
 R.T.: 13.471 min  
 Delta R.T.: 0.000 min  
 Response: 858022  
 Conc: 24.93 ng/ml



#8 m-Xylene  
 R.T.: 13.602 min  
 Delta R.T.: 0.001 min  
 Response: 1707708  
 Conc: 50.13 ng/ml



#9 O-Xylene  
 R.T.: 14.325 min  
 Delta R.T.: 0.000 min  
 Response: 1636793  
 Conc: 50.51 ng/ml



#10 1,2,4-Trimethylbenzene

R.T.: 16.579 min  
Delta R.T.: 0.000 min  
Response: 1342157  
Conc: 51.18 ng/ml

Instrument :  
FID\_B  
ClientSampleId :