

Data Path : Z:\pestpcbsrv\HPCHEM1\FID_B\Data\FB041719\
 Data File : FB020716.D
 Signal(s) : FID2B.CH
 Acq On : 17 Apr 2019 8:01
 Operator : MJ/SJ
 Sample : 20 PPB GRO STD
 Misc :
 ALS Vial : 1 Sample Multiplier: 1

Integration File: Calibration.e
 Quant Time: Apr 18 01:18:26 2019
 Quant Method : Z:\pestpcbsrv\HPCHEM1\FID_B\Method\FB040419.M
 Quant Title :
 QLast Update : Thu Apr 04 17:27:15 2019
 Response via : Initial Calibration
 Integrator: ChemStation

Volume Inj. : 5 g/ml
 Signal Phase : RTX-502.2
 Signal Info : 60mx0.53mmx3.00um

Compound	R.T.	Response	Conc Units

System Monitoring Compounds			
5) s AAA-TFT	8.996	341603	18.521 ng/ml
Target Compounds			
1) t 2-Methylpentane	4.866	792576	22.514 ng/ml
2) t 2,2,4-Trimethylpentane	7.625	784138	26.301 ng/ml
3) t n-Heptane	7.952	297477	7.578 ng/ml
4) t Benzene	8.088	310533	7.560 ng/ml
6) t Toluene	10.839	788473	26.094 ng/ml
7) t Ethylbenzene	13.290	265856	10.392 ng/ml
8) t m-Xylene	13.423	559640	21.175 ng/ml
9) t O-Xylene	14.154	573966	21.201 ng/ml
10) t 1,2,4-Trimethylbenzene	16.439	546777	20.928 ng/ml

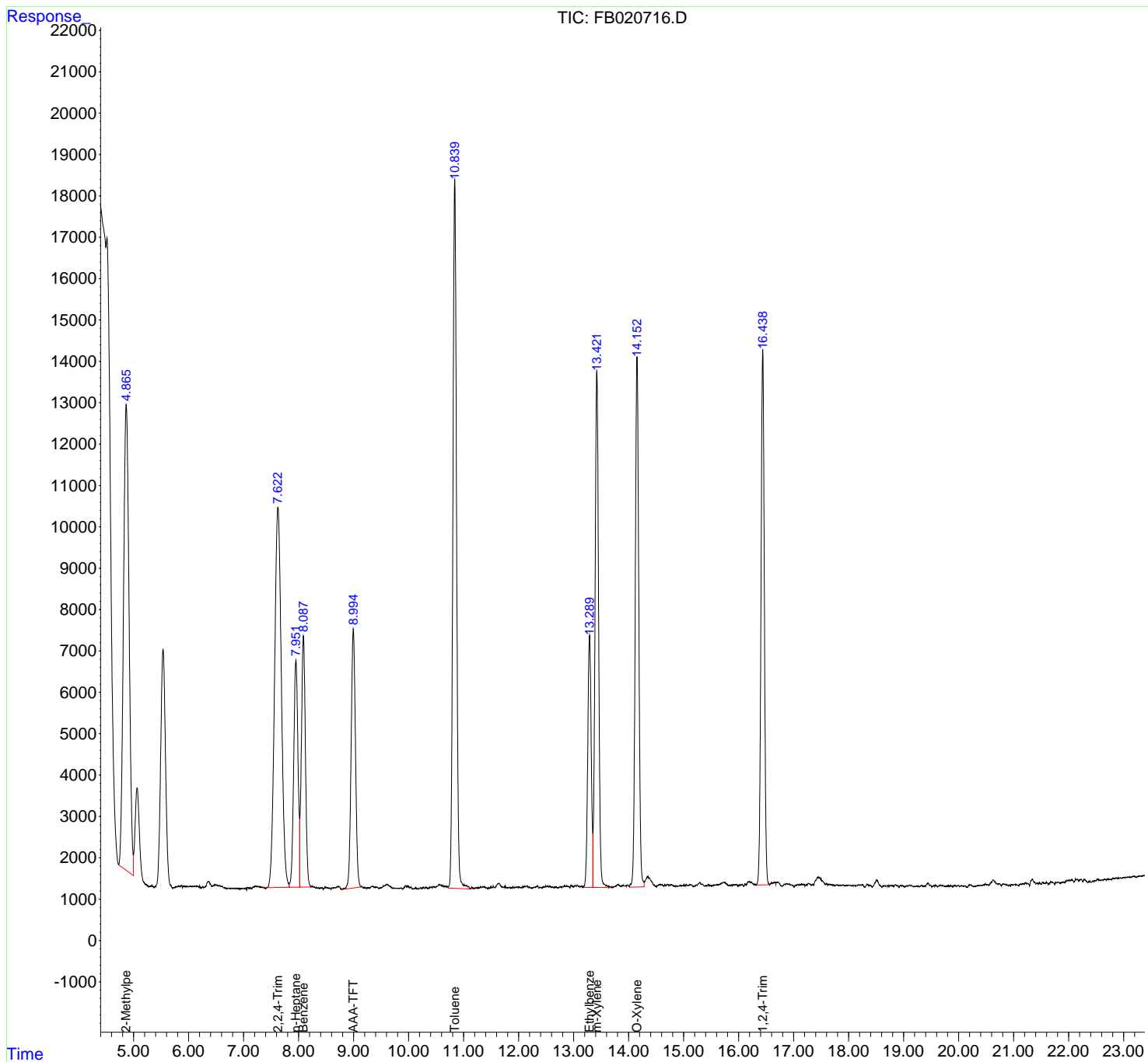
(f)=RT Delta > 1/2 Window

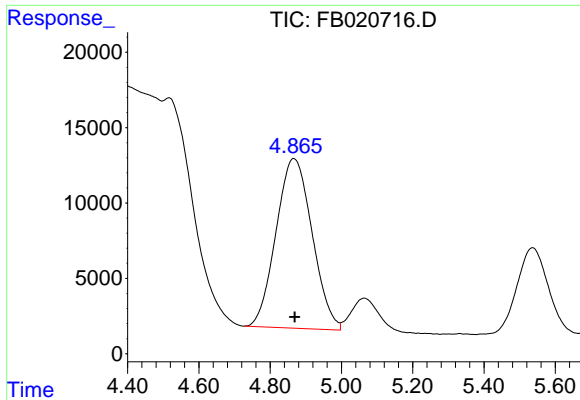
(m)=manual int.

Data Path : Z:\pestpcbsrv\HPCHEM1\FID_B\Data\FB041719\
 Data File : FB020716.D
 Signal(s) : FID2B.CH
 Acq On : 17 Apr 2019 8:01
 Operator : MJ/SJ
 Sample : 20 PPB GRO STD
 Misc :
 ALS Vial : 1 Sample Multiplier: 1

Integration File: Calibration.e
 Quant Time: Apr 18 01:18:26 2019
 Quant Method : Z:\pestpcbsrv\HPCHEM1\FID_B\Method\FB040419.M
 Quant Title :
 QLast Update : Thu Apr 04 17:27:15 2019
 Response via : Initial Calibration
 Integrator: ChemStation

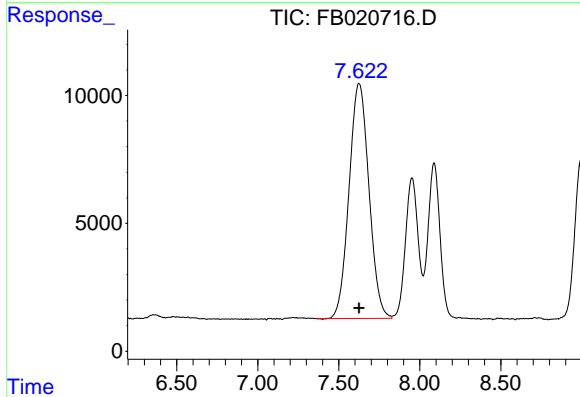
Volume Inj. : 5 g/ml
 Signal Phase : RTX-502.2
 Signal Info : 60mx0.53mmx3.00um





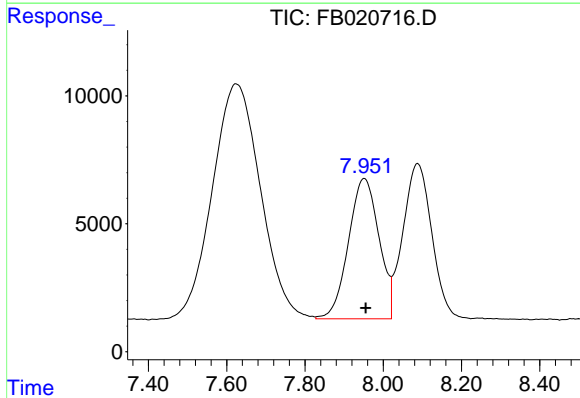
#1 2-Methylpentane

R.T.: 4.866 min
 Delta R.T.: -0.003 min
 Response: 792576
 Conc: 22.51 ng/ml



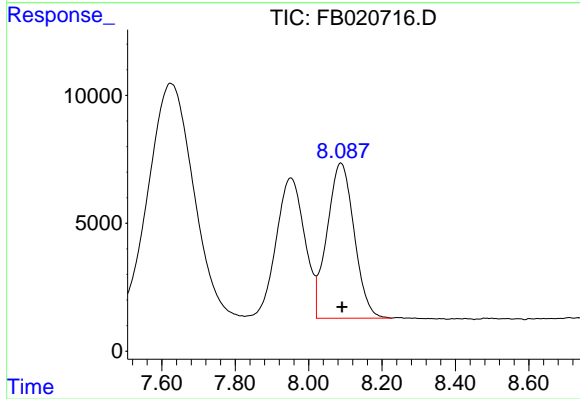
#2 2,2,4-Trimethylpentane

R.T.: 7.625 min
 Delta R.T.: -0.001 min
 Response: 784138
 Conc: 26.30 ng/ml



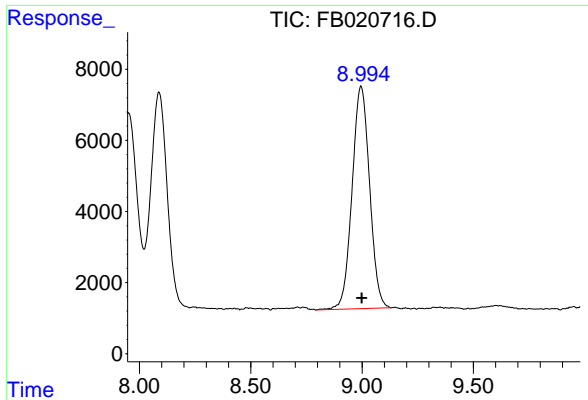
#3 n-Heptane

R.T.: 7.952 min
 Delta R.T.: -0.003 min
 Response: 297477
 Conc: 7.58 ng/ml

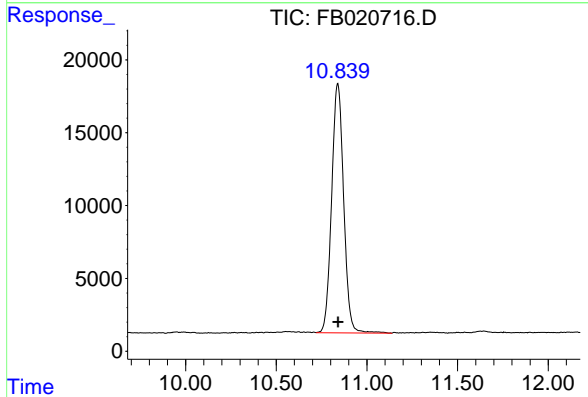


#4 Benzene

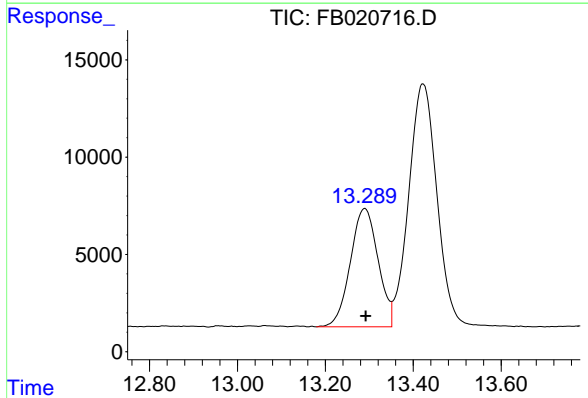
R.T.: 8.088 min
 Delta R.T.: -0.003 min
 Response: 310533
 Conc: 7.56 ng/ml



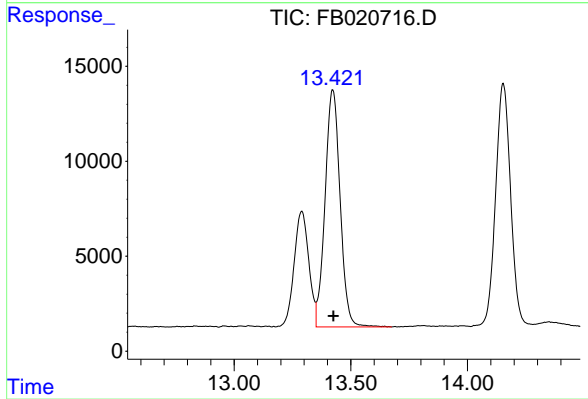
#5 AAA-TFT
 R.T.: 8.996 min
 Delta R.T.: -0.003 min
 Response: 341603
 Conc: 18.52 ng/ml



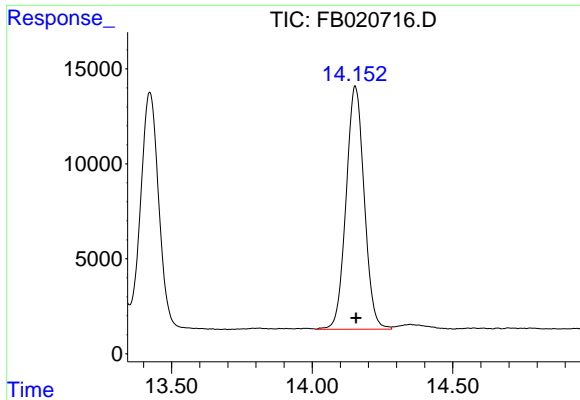
#6 Toluene
 R.T.: 10.839 min
 Delta R.T.: -0.003 min
 Response: 788473
 Conc: 26.09 ng/ml



#7 Ethylbenzene
 R.T.: 13.290 min
 Delta R.T.: -0.002 min
 Response: 265856
 Conc: 10.39 ng/ml

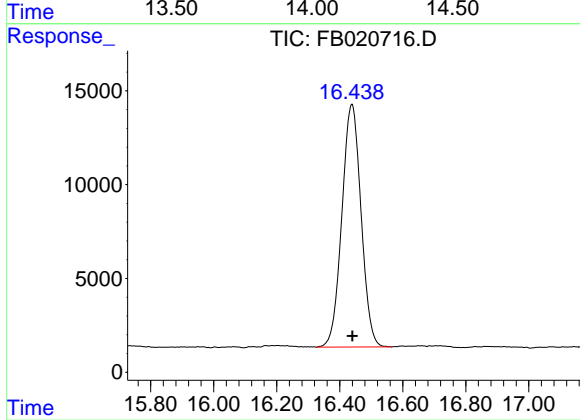


#8 m-Xylene
 R.T.: 13.423 min
 Delta R.T.: -0.003 min
 Response: 559640
 Conc: 21.17 ng/ml



#9 O-Xylene

R.T.: 14.154 min
Delta R.T.: -0.003 min
Response: 573966
Conc: 21.20 ng/ml



#10 1,2,4-Trimethylbenzene

R.T.: 16.439 min
Delta R.T.: -0.001 min
Response: 546777
Conc: 20.93 ng/ml