

Data Path : Z:\pestpcbsrv\HPCHEM1\FID_B\Data\FB041919\
 Data File : FB020789.D
 Signal(s) : FID2B.CH
 Acq On : 20 Apr 2019 3:55
 Operator : MJ/SJ
 Sample : 20 PPB GRO STD
 Misc :
 ALS Vial : 40 Sample Multiplier: 1

Integration File: Calibration.e
 Quant Time: Apr 20 04:52:01 2019
 Quant Method : Z:\pestpcbsrv\HPCHEM1\FID_B\Method\FB040419.M
 Quant Title :
 QLast Update : Thu Apr 04 17:27:15 2019
 Response via : Initial Calibration
 Integrator: ChemStation

Volume Inj. : 5 g/ml
 Signal Phase : RTX-502.2
 Signal Info : 60mx0.53mmx3.00um

Compound	R.T.	Response	Conc Units

System Monitoring Compounds			
5) s AAA-TFT	9.000	380680	20.639 ng/ml
Target Compounds			
1) t 2-Methylpentane	4.868	939502	26.688 ng/ml
2) t 2,2,4-Trimethylpentane	7.628	833166	27.946 ng/ml
3) t n-Heptane	7.955	351506	8.954 ng/ml
4) t Benzene	8.092	388758	9.465 ng/ml
6) t Toluene	10.843	859391	28.441 ng/ml
7) t Ethylbenzene	13.294	231920	9.066 ng/ml
8) t m-Xylene	13.427	475684	17.998 ng/ml
9) t O-Xylene	14.158	486982	17.988 ng/ml
10) t 1,2,4-Trimethylbenzene	16.442	460508	17.626 ng/ml

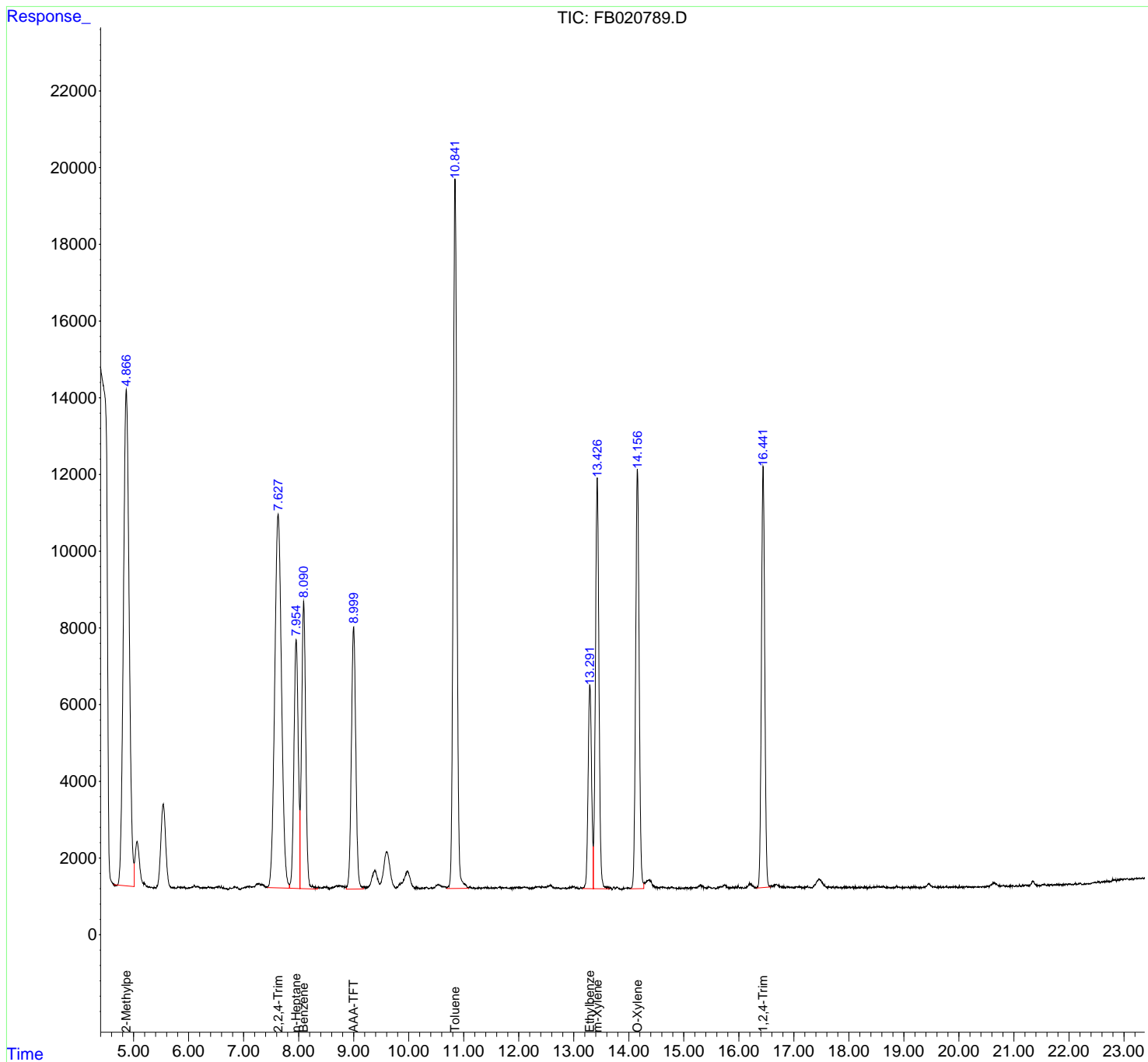
(f)=RT Delta > 1/2 Window

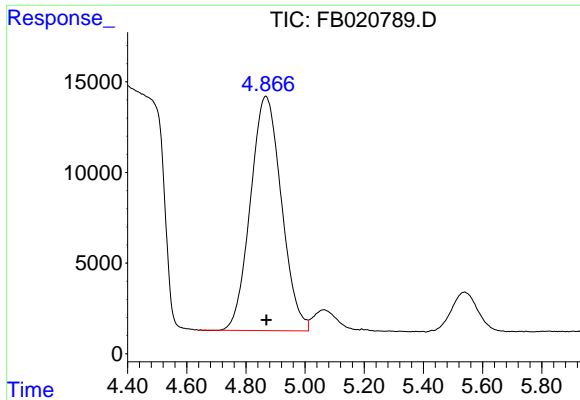
(m)=manual int.

Data Path : Z:\pestpcbsrv\HPCHEM1\FID_B\Data\FB041919\
 Data File : FB020789.D
 Signal(s) : FID2B.CH
 Acq On : 20 Apr 2019 3:55
 Operator : MJ/SJ
 Sample : 20 PPB GRO STD
 Misc :
 ALS Vial : 40 Sample Multiplier: 1

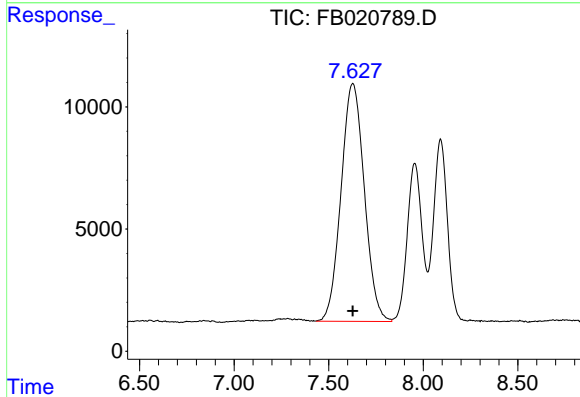
Integration File: Calibration.e
 Quant Time: Apr 20 04:52:01 2019
 Quant Method : Z:\pestpcbsrv\HPCHEM1\FID_B\Method\FB040419.M
 Quant Title :
 QLast Update : Thu Apr 04 17:27:15 2019
 Response via : Initial Calibration
 Integrator: ChemStation

Volume Inj. : 5 g/ml
 Signal Phase : RTX-502.2
 Signal Info : 60mx0.53mmx3.00um

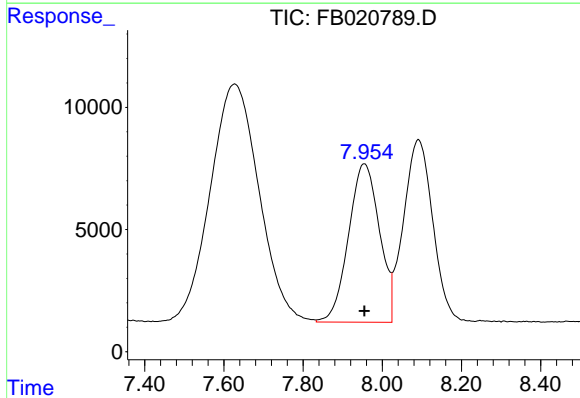




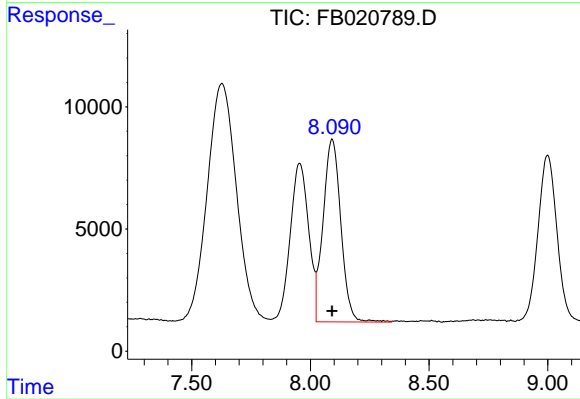
#1 2-Methylpentane
 R.T.: 4.868 min
 Delta R.T.: -0.001 min
 Response: 939502
 Conc: 26.69 ng/ml



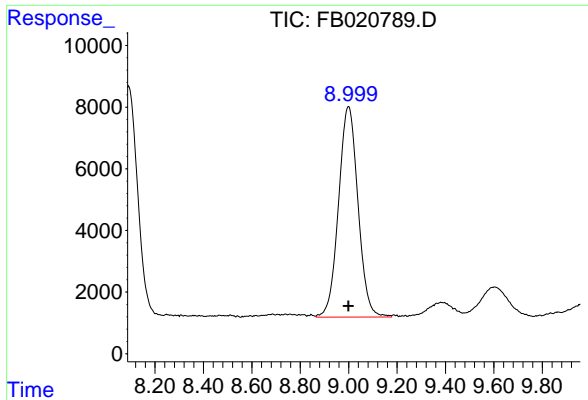
#2 2,2,4-Trimethylpentane
 R.T.: 7.628 min
 Delta R.T.: 0.001 min
 Response: 833166
 Conc: 27.95 ng/ml



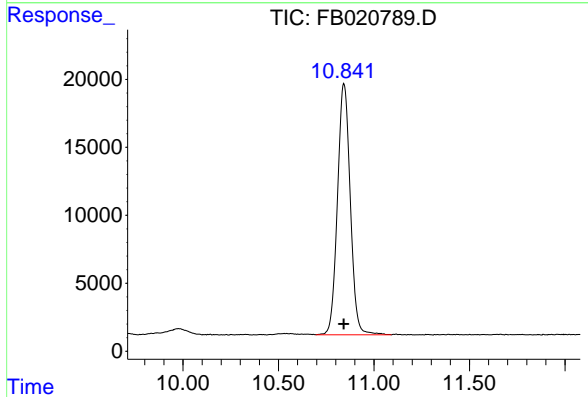
#3 n-Heptane
 R.T.: 7.955 min
 Delta R.T.: 0.000 min
 Response: 351506
 Conc: 8.95 ng/ml



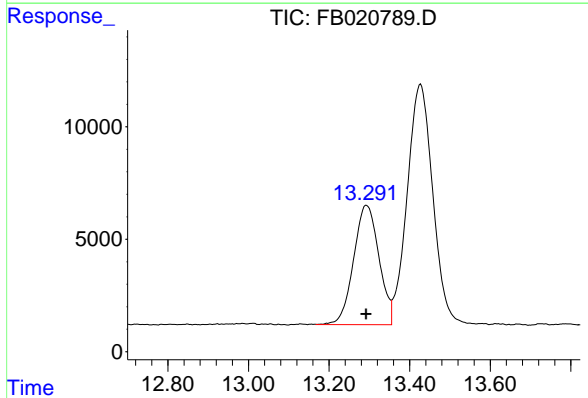
#4 Benzene
 R.T.: 8.092 min
 Delta R.T.: 0.000 min
 Response: 388758
 Conc: 9.46 ng/ml



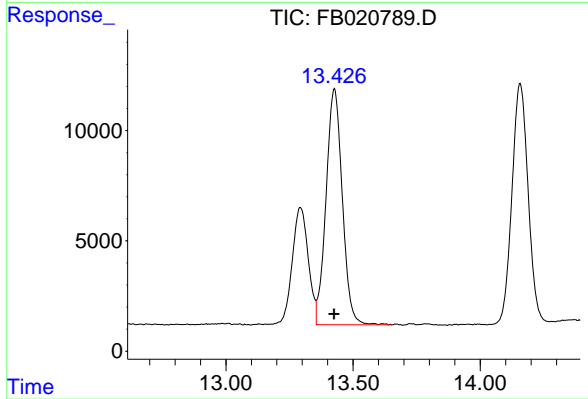
#5 AAA-TFT
 R.T.: 9.000 min
 Delta R.T.: 0.000 min
 Response: 380680
 Conc: 20.64 ng/ml



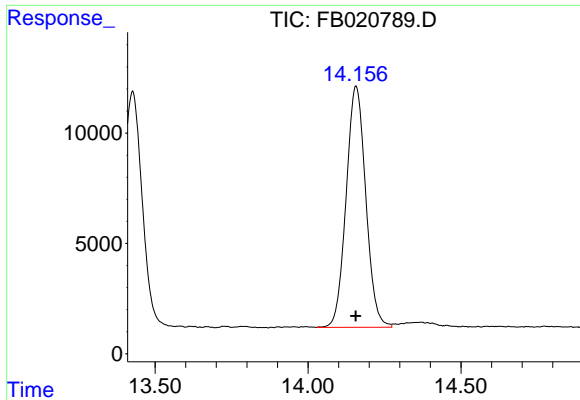
#6 Toluene
 R.T.: 10.843 min
 Delta R.T.: 0.000 min
 Response: 859391
 Conc: 28.44 ng/ml



#7 Ethylbenzene
 R.T.: 13.294 min
 Delta R.T.: 0.001 min
 Response: 231920
 Conc: 9.07 ng/ml

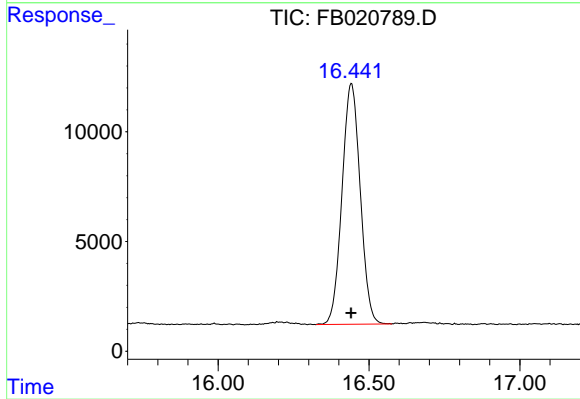


#8 m-Xylene
 R.T.: 13.427 min
 Delta R.T.: 0.001 min
 Response: 475684
 Conc: 18.00 ng/ml



#9 O-Xylene

R.T.: 14.158 min
Delta R.T.: 0.001 min
Response: 486982
Conc: 17.99 ng/ml



#10 1,2,4-Trimethylbenzene

R.T.: 16.442 min
Delta R.T.: 0.002 min
Response: 460508
Conc: 17.63 ng/ml