

Data Path : Z:\pestpcbsrv\HPCHEM1\FID_B\Data\FB042423\
 Data File : FB029742.D
 Signal(s) : FID2B.CH
 Acq On : 24 Apr 2023 23:50
 Operator : YP/AJ
 Sample : 20 PPB GRO STD
 Misc :
 ALS Vial : 24 Sample Multiplier: 1

Instrument :
 FID_B
 ClientSampleId :
 20 PPB GRO STD

Integration File: Calibration.e
 Quant Time: Apr 25 03:39:37 2023
 Quant Method : Z:\pestpcbsrv\HPCHEM1\FID_B\Method\FB041723.M
 Quant Title :
 QLast Update : Mon Apr 17 12:32:26 2023
 Response via : Initial Calibration
 Integrator: ChemStation

Volume Inj. : 5 g/ml
 Signal Phase : RTX-502.2
 Signal Info : 60mx0.53mmx3.00um

| Compound | R.T. | Response | Conc Units |
|------------------------------|--------|----------|--------------|
| ----- | | | |
| System Monitoring Compounds | | | |
| 5) s AAA-TFT | 8.783 | 227613 | 17.080 ng/ml |
| Target Compounds | | | |
| 1) t 2-Methylpentane | 4.699 | 361958 | 25.726 ng/ml |
| 2) t 2,2,4-Trimethylpentane | 7.405 | 409614 | 26.666 ng/ml |
| 3) t n-Heptane | 7.741 | 128751 | 8.000 ng/ml |
| 4) t Benzene | 7.879 | 186275 | 9.381 ng/ml |
| 6) t Toluene | 10.611 | 547194 | 28.330 ng/ml |
| 7) t Ethylbenzene | 13.048 | 177827 | 9.825 ng/ml |
| 8) t m-Xylene | 13.180 | 351625 | 19.442 ng/ml |
| 9) t O-Xylene | 13.907 | 340658 | 19.427 ng/ml |
| 10) t 1,2,4-Trimethylbenzene | 16.181 | 343731 | 19.234 ng/ml |
| ----- | | | |

(f)=RT Delta > 1/2 Window

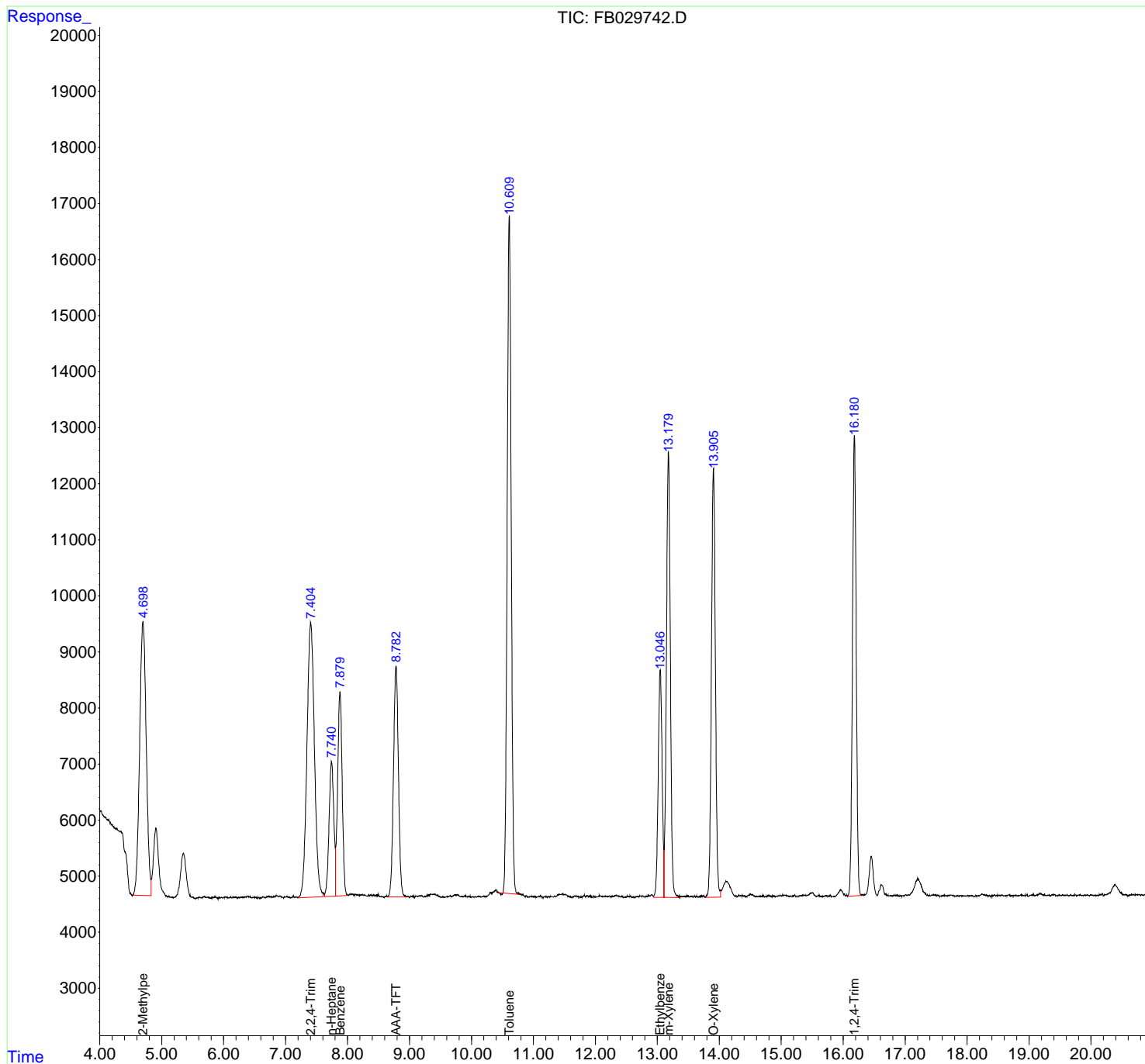
(m)=manual int.

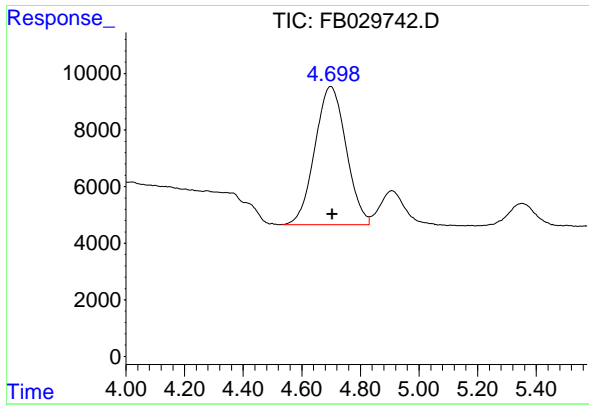
Data Path : Z:\pestpcbsrv\HPCHEM1\FID_B\Data\FB042423\
 Data File : FB029742.D
 Signal(s) : FID2B.CH
 Acq On : 24 Apr 2023 23:50
 Operator : YP/AJ
 Sample : 20 PPB GRO STD
 Misc :
 ALS Vial : 24 Sample Multiplier: 1

Instrument :
 FID_B
 ClientSampleId :
 20 PPB GRO STD

Integration File: Calibration.e
 Quant Time: Apr 25 03:39:37 2023
 Quant Method : Z:\pestpcbsrv\HPCHEM1\FID_B\Method\FB041723.M
 Quant Title :
 QLast Update : Mon Apr 17 12:32:26 2023
 Response via : Initial Calibration
 Integrator: ChemStation

Volume Inj. : 5 g/ml
 Signal Phase : RTX-502.2
 Signal Info : 60mx0.53mmx3.00um

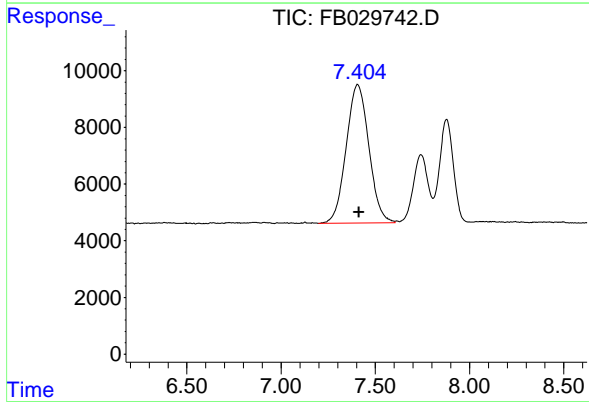




#1 2-Methylpentane

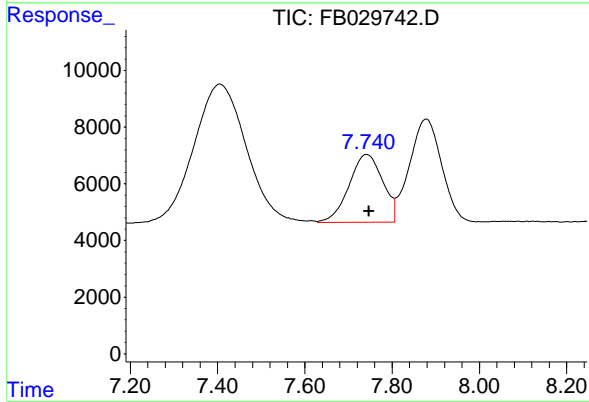
R.T.: 4.699 min
 Delta R.T.: -0.006 min
 Response: 361958
 Conc: 25.73 ng/ml

Instrument :
 FID_B
 ClientSampleId :
 20 PPB GRO STD



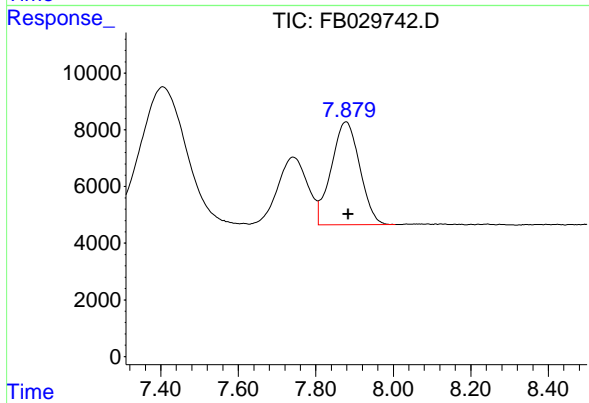
#2 2,2,4-Trimethylpentane

R.T.: 7.405 min
 Delta R.T.: -0.008 min
 Response: 409614
 Conc: 26.67 ng/ml



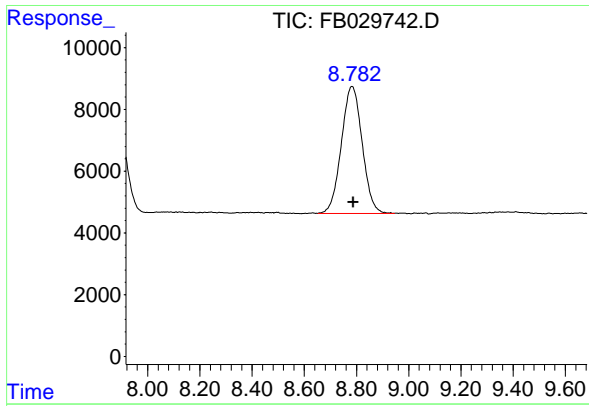
#3 n-Heptane

R.T.: 7.741 min
 Delta R.T.: -0.005 min
 Response: 128751
 Conc: 8.00 ng/ml



#4 Benzene

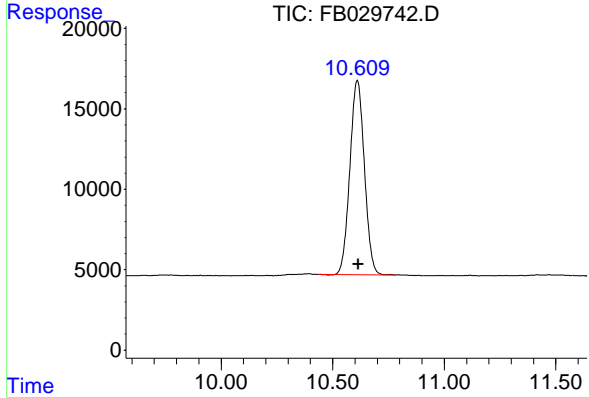
R.T.: 7.879 min
 Delta R.T.: -0.004 min
 Response: 186275
 Conc: 9.38 ng/ml



#5 AAA-TFT

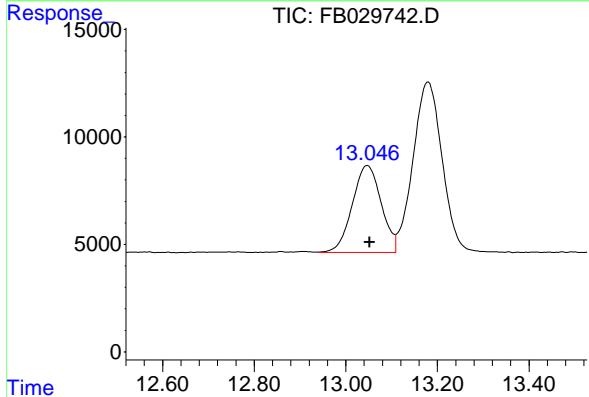
R.T.: 8.783 min
 Delta R.T.: -0.004 min
 Response: 227613
 Conc: 17.08 ng/ml

Instrument : FID_B
 ClientSampleId : 20 PPB GRO STD



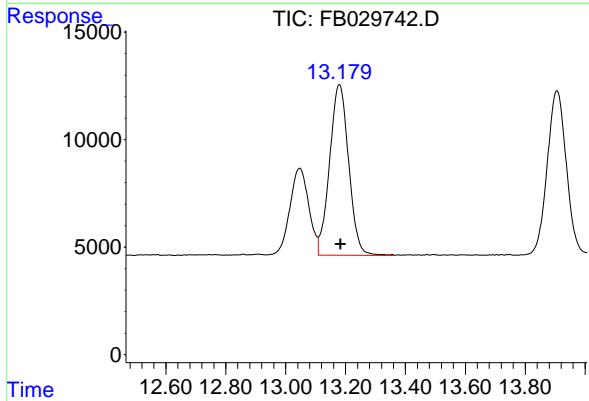
#6 Toluene

R.T.: 10.611 min
 Delta R.T.: -0.005 min
 Response: 547194
 Conc: 28.33 ng/ml



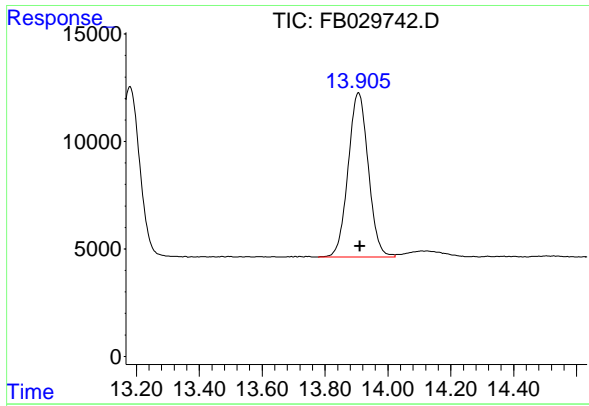
#7 Ethylbenzene

R.T.: 13.048 min
 Delta R.T.: -0.005 min
 Response: 177827
 Conc: 9.83 ng/ml



#8 m-Xylene

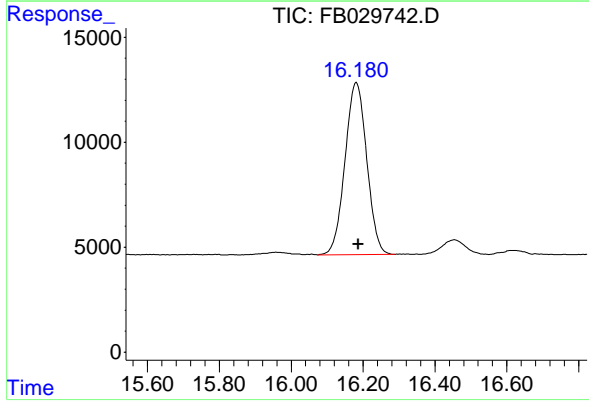
R.T.: 13.180 min
 Delta R.T.: -0.005 min
 Response: 351625
 Conc: 19.44 ng/ml



#9 O-Xylene

R.T.: 13.907 min
Delta R.T.: -0.005 min
Response: 340658
Conc: 19.43 ng/ml

Instrument :
FID_B
ClientSampleId :
20 PPB GRO STD



#10 1,2,4-Trimethylbenzene

R.T.: 16.181 min
Delta R.T.: -0.005 min
Response: 343731
Conc: 19.23 ng/ml