

Data Path : Z:\pestpcbsrv\HPCHEM1\FID\_B\Data\FB050919\  
 Data File : FB020999.D  
 Signal(s) : FID2B.CH  
 Acq On : 9 May 2019 8:58  
 Operator : MJ/SJ  
 Sample : 20 PPB GRO STD  
 Misc :  
 ALS Vial : 1 Sample Multiplier: 1

Integration File: Calibration.e  
 Quant Time: May 10 01:41:59 2019  
 Quant Method : Z:\pestpcbsrv\HPCHEM1\FID\_B\Method\FB042919.M  
 Quant Title :  
 QLast Update : Mon Apr 29 15:53:58 2019  
 Response via : Initial Calibration  
 Integrator: ChemStation

Volume Inj. : 5 g/ml  
 Signal Phase : RTX-502.2  
 Signal Info : 60mx0.53mmx3.00um

Compound	R.T.	Response	Conc Units
-----			
System Monitoring Compounds			
5) s AAA-TFT	8.990	364580	20.323 ng/ml
Target Compounds			
1) t 2-Methylpentane	4.854	1171061	25.961 ng/ml
2) t 2,2,4-Trimethylpentane	7.605	1073815	25.761 ng/ml
3) t n-Heptane	7.946	337506	8.525 ng/ml
4) t Benzene	8.082	378455	9.046 ng/ml
6) t Toluene	10.833	741065	26.752 ng/ml
7) t Ethylbenzene	13.284	268319	9.567 ng/ml
8) t m-Xylene	13.416	584933	19.681 ng/ml
9) t O-Xylene	14.147	592166	19.104 ng/ml
10) t 1,2,4-Trimethylbenzene	16.432	604956	19.506 ng/ml
-----			

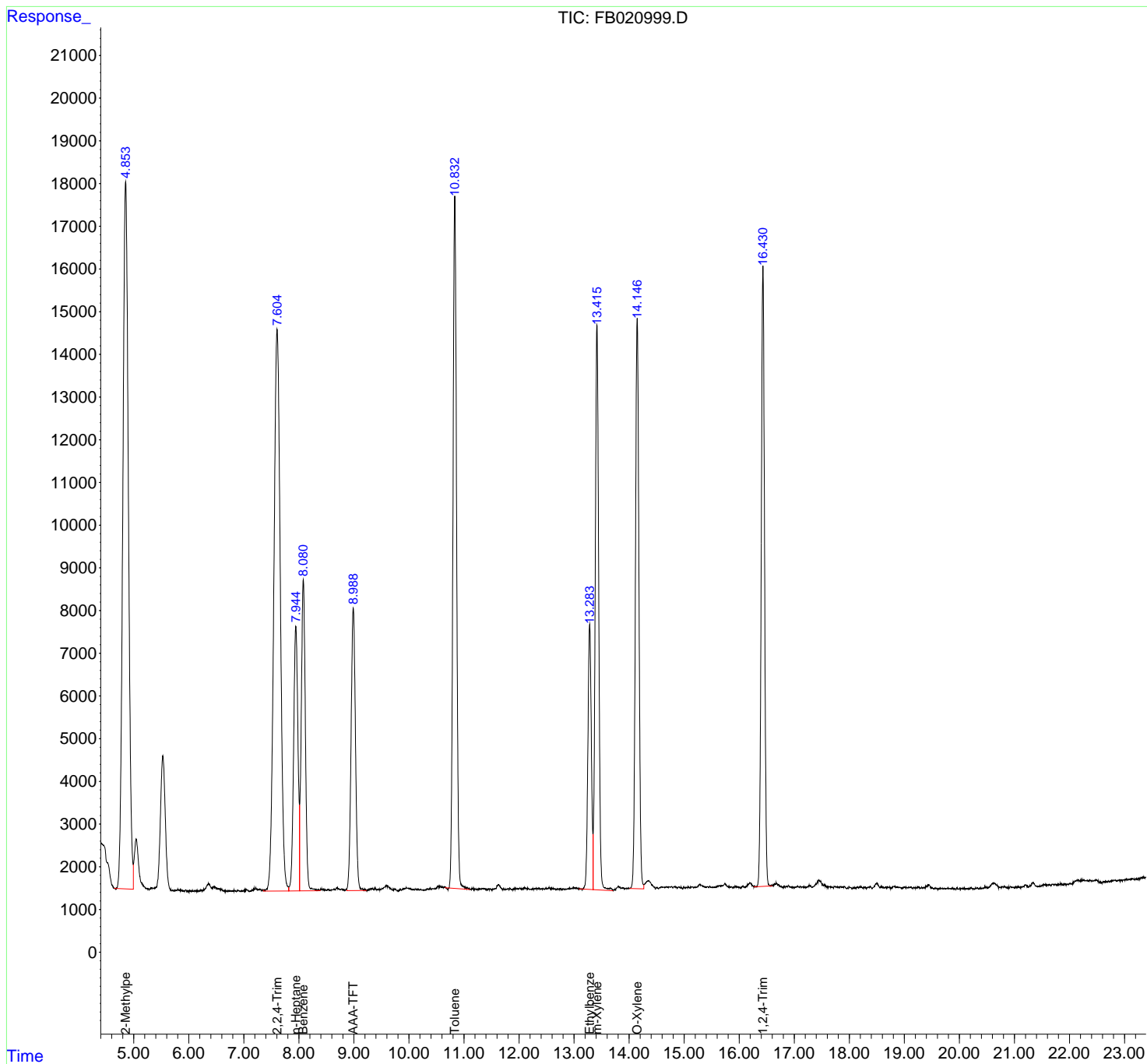
(f)=RT Delta > 1/2 Window

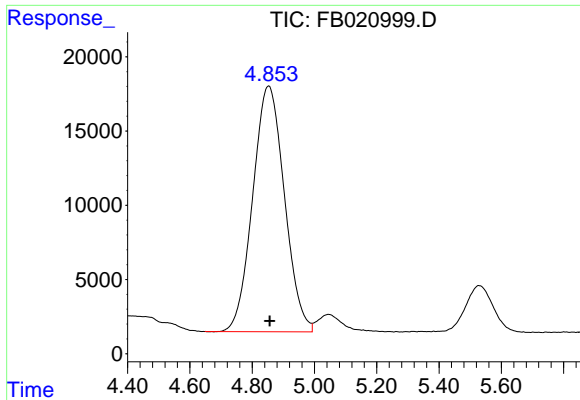
(m)=manual int.

Data Path : Z:\pestpcbsrv\HPCHEM1\FID\_B\Data\FB050919\  
 Data File : FB020999.D  
 Signal(s) : FID2B.CH  
 Acq On : 9 May 2019 8:58  
 Operator : MJ/SJ  
 Sample : 20 PPB GRO STD  
 Misc :  
 ALS Vial : 1 Sample Multiplier: 1

Integration File: Calibration.e  
 Quant Time: May 10 01:41:59 2019  
 Quant Method : Z:\pestpcbsrv\HPCHEM1\FID\_B\Method\FB042919.M  
 Quant Title :  
 QLast Update : Mon Apr 29 15:53:58 2019  
 Response via : Initial Calibration  
 Integrator: ChemStation

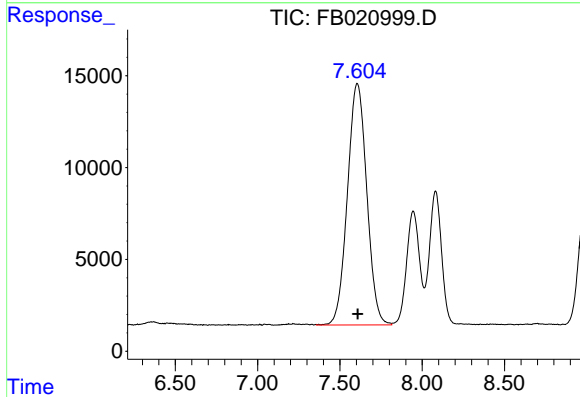
Volume Inj. : 5 g/ml  
 Signal Phase : RTX-502.2  
 Signal Info : 60mx0.53mmx3.00um





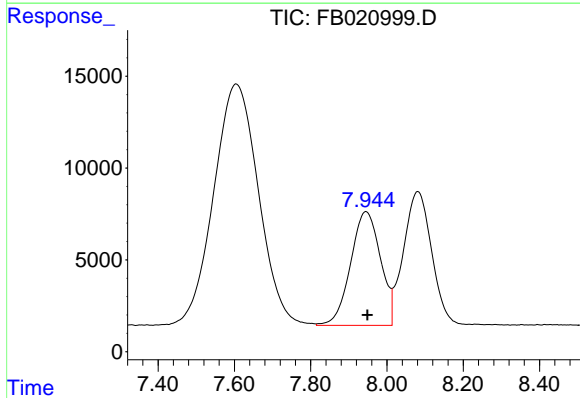
#1 2-Methylpentane

R.T.: 4.854 min  
 Delta R.T.: -0.003 min  
 Response: 1171061  
 Conc: 25.96 ng/ml



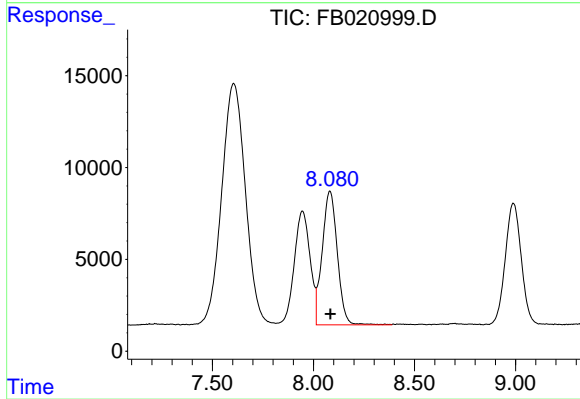
#2 2,2,4-Trimethylpentane

R.T.: 7.605 min  
 Delta R.T.: -0.003 min  
 Response: 1073815  
 Conc: 25.76 ng/ml



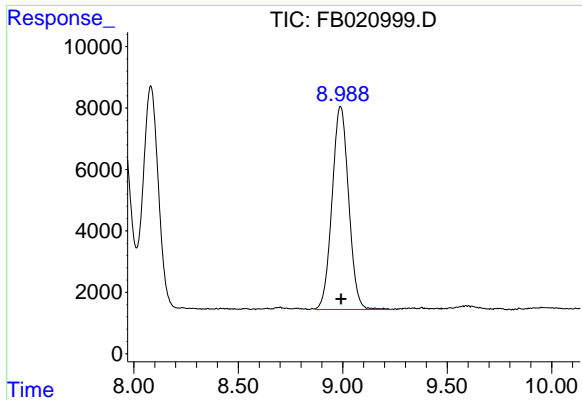
#3 n-Heptane

R.T.: 7.946 min  
 Delta R.T.: -0.003 min  
 Response: 337506  
 Conc: 8.53 ng/ml



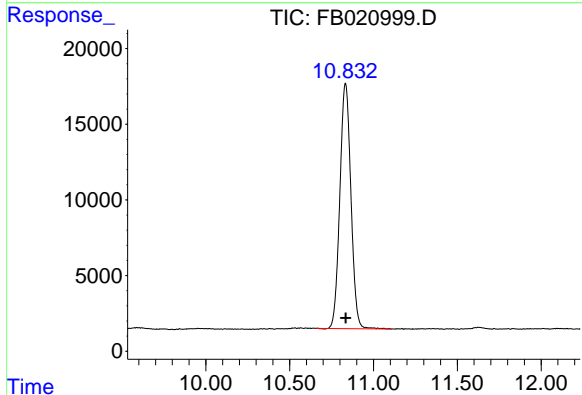
#4 Benzene

R.T.: 8.082 min  
 Delta R.T.: -0.003 min  
 Response: 378455  
 Conc: 9.05 ng/ml



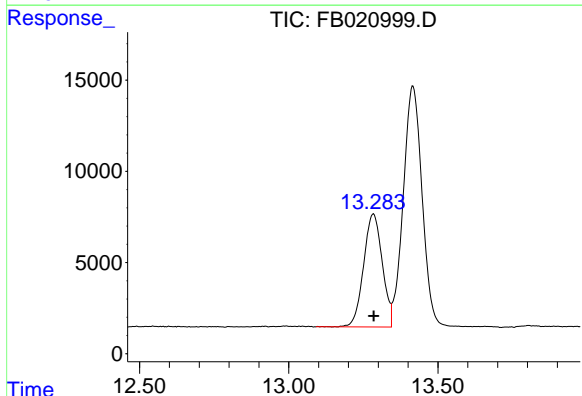
#5 AAA-TFT

R.T.: 8.990 min  
 Delta R.T.: -0.002 min  
 Response: 364580  
 Conc: 20.32 ng/ml



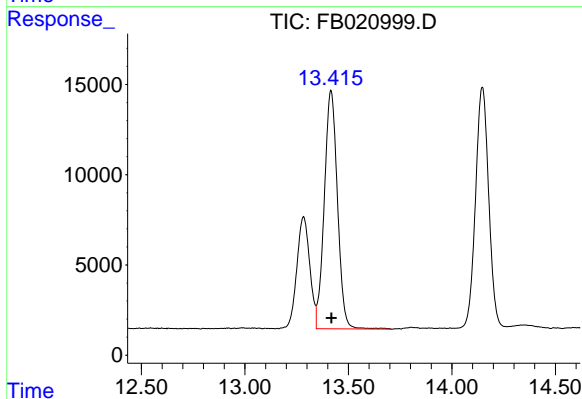
#6 Toluene

R.T.: 10.833 min  
 Delta R.T.: -0.003 min  
 Response: 741065  
 Conc: 26.75 ng/ml



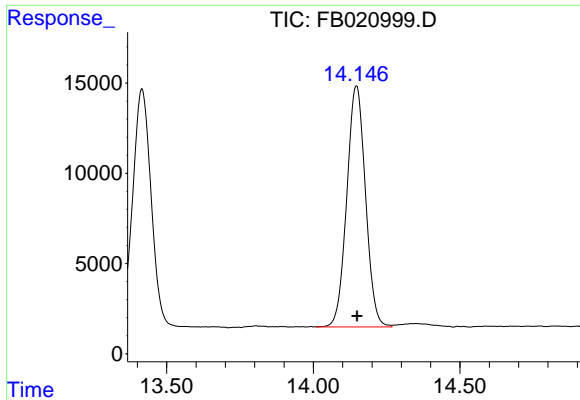
#7 Ethylbenzene

R.T.: 13.284 min  
 Delta R.T.: -0.002 min  
 Response: 268319  
 Conc: 9.57 ng/ml



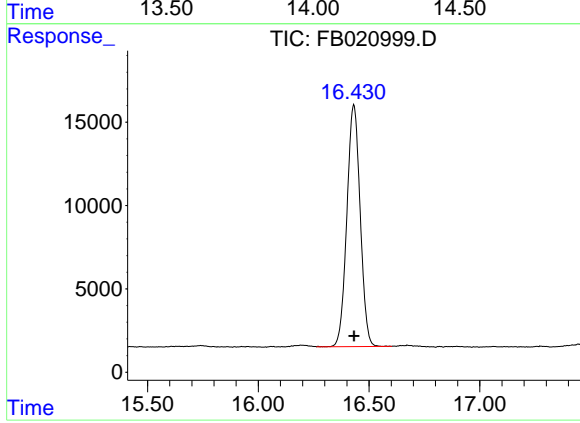
#8 m-Xylene

R.T.: 13.416 min  
 Delta R.T.: -0.003 min  
 Response: 584933  
 Conc: 19.68 ng/ml



#9 O-Xylene

R.T.: 14.147 min  
Delta R.T.: -0.002 min  
Response: 592166  
Conc: 19.10 ng/ml



#10 1,2,4-Trimethylbenzene

R.T.: 16.432 min  
Delta R.T.: -0.002 min  
Response: 604956  
Conc: 19.51 ng/ml