

Data Path : Z:\pestpcbsrv\HPCHEM1\FID\_B\Data\FB051019\  
 Data File : FB021016.D  
 Signal(s) : FID2B.CH  
 Acq On : 10 May 2019 12:24  
 Operator : MJ/SJ  
 Sample : K2770-02MS  
 Misc : 5.02g/5.00ml DI WATER  
 ALS Vial : 7 Sample Multiplier: 1

Integration File: Calibration.e  
 Quant Time: May 10 23:40:39 2019  
 Quant Method : Z:\pestpcbsrv\HPCHEM1\FID\_B\Method\FB042919.M  
 Quant Title :  
 QLast Update : Mon Apr 29 15:53:58 2019  
 Response via : Initial Calibration  
 Integrator: ChemStation

Volume Inj. : 5 g/ml  
 Signal Phase : RTX-502.2  
 Signal Info : 60mx0.53mmx3.00um

Compound	R.T.	Response	Conc Units
-----			
System Monitoring Compounds			
5) s AAA-TFT	8.994	360589	20.100 ng/ml
Target Compounds			
1) t 2-Methylpentane	4.857	814379	18.054 ng/ml
2) t 2,2,4-Trimethylpentane	7.610	730918	17.535 ng/ml
3) t n-Heptane	7.950	225594	5.698 ng/ml
4) t Benzene	8.086	377349	9.020 ng/ml
6) t Toluene	10.838	692194	24.988 ng/ml
7) t Ethylbenzene	13.289	206233	7.353 ng/ml
8) t m-Xylene	13.422	438829	14.765 ng/ml
9) t O-Xylene	14.153	465323	15.012 ng/ml
10) t 1,2,4-Trimethylbenzene	16.437	411559	13.270 ng/ml
-----			

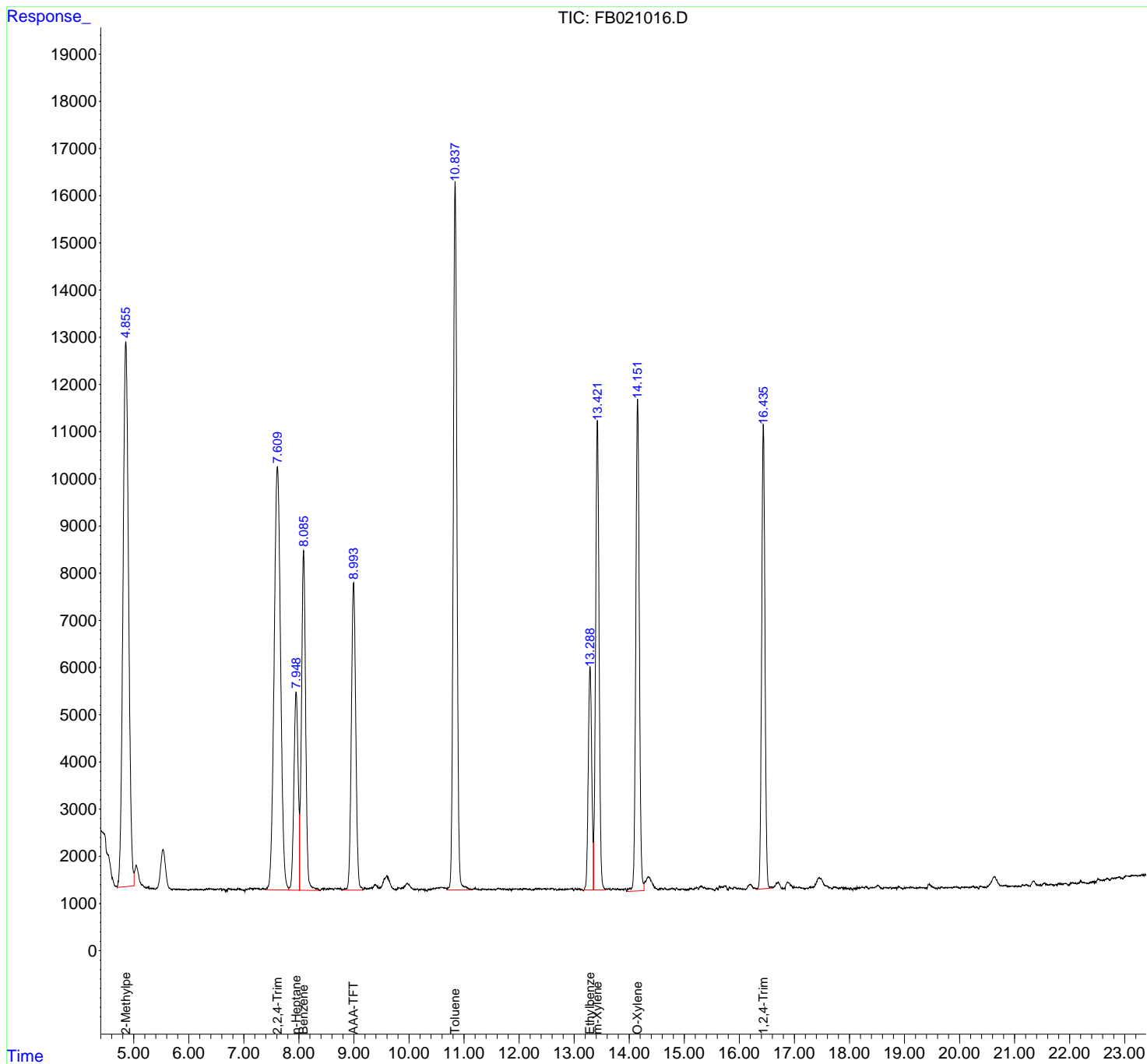
(f)=RT Delta > 1/2 Window

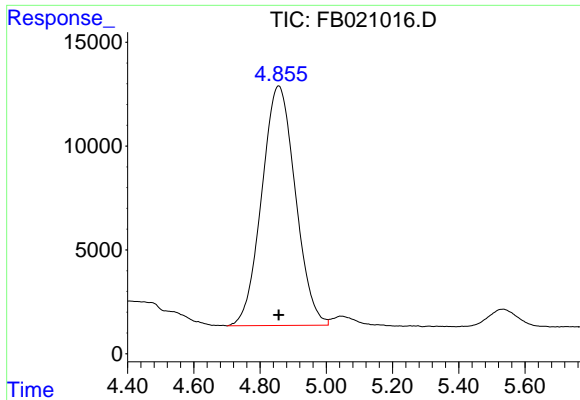
(m)=manual int.

Data Path : Z:\pestpcbsrv\HPCHEM1\FID\_B\Data\FB051019\  
 Data File : FB021016.D  
 Signal(s) : FID2B.CH  
 Acq On : 10 May 2019 12:24  
 Operator : MJ/SJ  
 Sample : K2770-02MS  
 Misc : 5.02g/5.00ml DI WATER  
 ALS Vial : 7 Sample Multiplier: 1

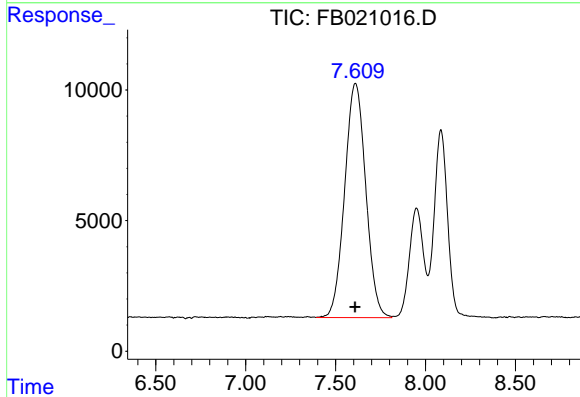
Integration File: Calibration.e  
 Quant Time: May 10 23:40:39 2019  
 Quant Method : Z:\pestpcbsrv\HPCHEM1\FID\_B\Method\FB042919.M  
 Quant Title :  
 QLast Update : Mon Apr 29 15:53:58 2019  
 Response via : Initial Calibration  
 Integrator: ChemStation

Volume Inj. : 5 g/ml  
 Signal Phase : RTX-502.2  
 Signal Info : 60mx0.53mmx3.00um

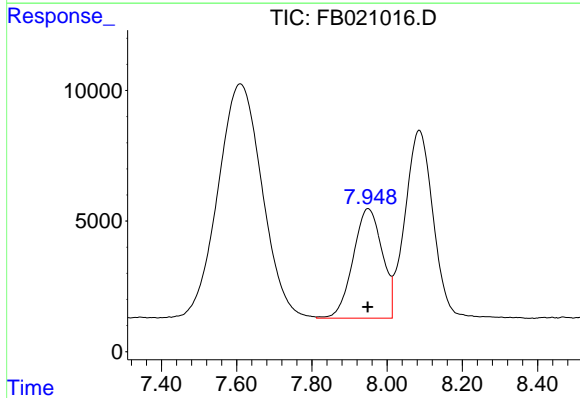




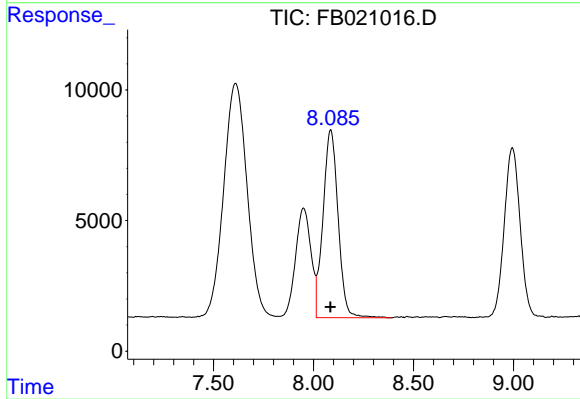
#1 2-Methylpentane  
R.T.: 4.857 min  
Delta R.T.: 0.000 min  
Response: 814379  
Conc: 18.05 ng/ml



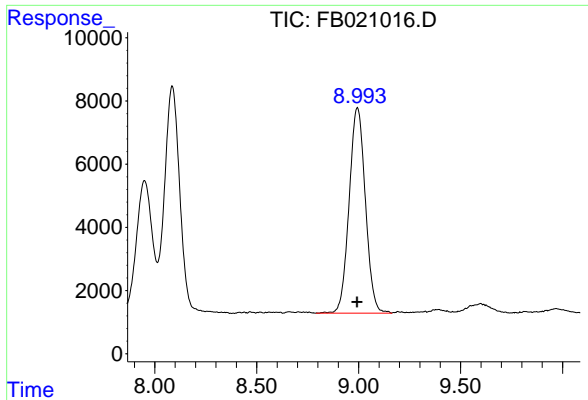
#2 2,2,4-Trimethylpentane  
R.T.: 7.610 min  
Delta R.T.: 0.001 min  
Response: 730918  
Conc: 17.53 ng/ml



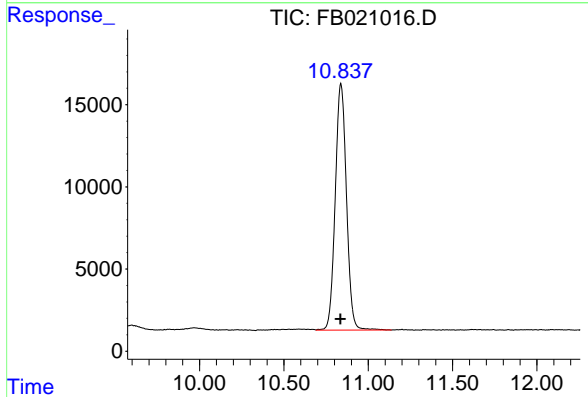
#3 n-Heptane  
R.T.: 7.950 min  
Delta R.T.: 0.001 min  
Response: 225594  
Conc: 5.70 ng/ml



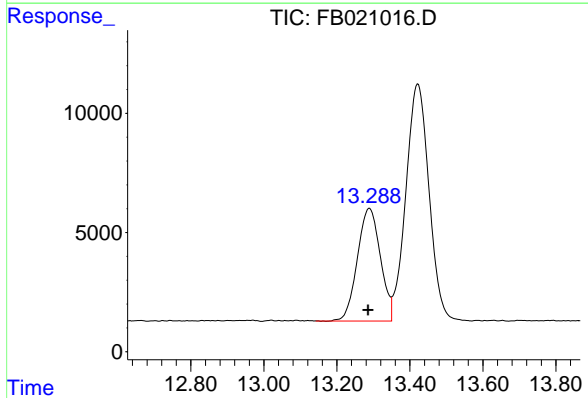
#4 Benzene  
R.T.: 8.086 min  
Delta R.T.: 0.002 min  
Response: 377349  
Conc: 9.02 ng/ml



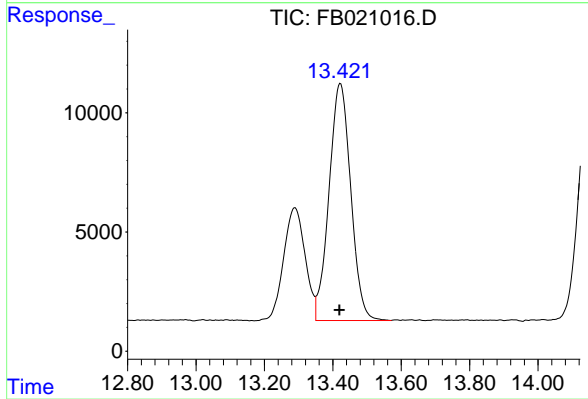
#5 AAA-TFT  
R.T.: 8.994 min  
Delta R.T.: 0.002 min  
Response: 360589  
Conc: 20.10 ng/ml



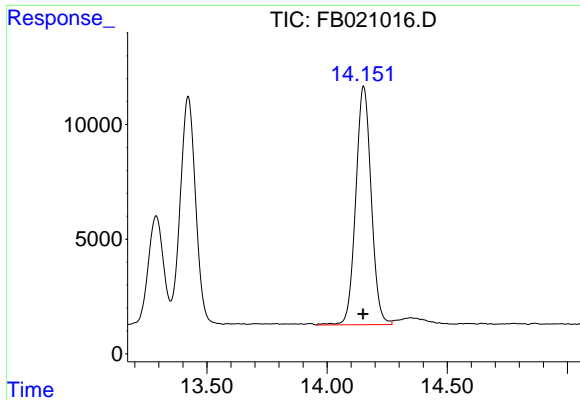
#6 Toluene  
R.T.: 10.838 min  
Delta R.T.: 0.002 min  
Response: 692194  
Conc: 24.99 ng/ml



#7 Ethylbenzene  
R.T.: 13.289 min  
Delta R.T.: 0.004 min  
Response: 206233  
Conc: 7.35 ng/ml

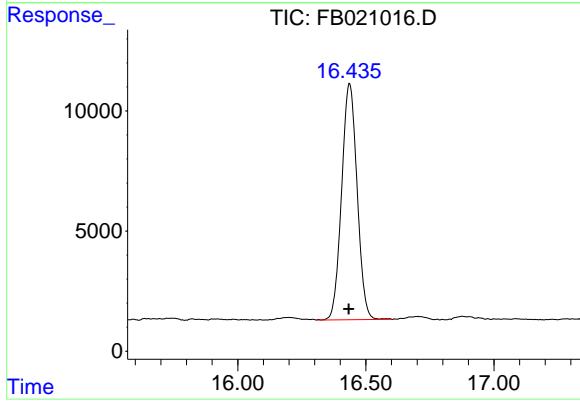


#8 m-Xylene  
R.T.: 13.422 min  
Delta R.T.: 0.003 min  
Response: 438829  
Conc: 14.77 ng/ml



#9 O-Xylene

R.T.: 14.153 min  
Delta R.T.: 0.003 min  
Response: 465323  
Conc: 15.01 ng/ml



#10 1,2,4-Trimethylbenzene

R.T.: 16.437 min  
Delta R.T.: 0.004 min  
Response: 411559  
Conc: 13.27 ng/ml