

Data Path : Z:\pestpcbsrv\HPCHEM1\FID\_B\Data\FB051325\  
 Data File : FB031724.D  
 Signal(s) : FID2B.CH  
 Acq On : 13 May 2025 19:35  
 Operator : YP/AJ  
 Sample : Q1982-06  
 Misc : 7.00G/5.00 ML DI WATER  
 ALS Vial : 18 Sample Multiplier: 1

Instrument :  
 FID\_B  
 ClientSampleId :  
 TP-6

Integration File: Calibration.e  
 Quant Time: May 14 07:22:49 2025  
 Quant Method : Z:\pestpcbsrv\HPCHEM1\FID\_B\Method\FB042325.M  
 Quant Title :  
 QLast Update : Wed Apr 23 13:48:24 2025  
 Response via : Initial Calibration  
 Integrator: ChemStation

Volume Inj. : 5 g/ml  
 Signal Phase : RTX-502.2  
 Signal Info : 60mx0.53mmx3.00um

Compound	R.T.	Response	Conc Units
-----			
System Monitoring Compounds			
5) s AAA-TFT	8.795	435726	19.000 ng/ml
Target Compounds			
10) t 1,2,4-Trimethylbenzene	16.192	4764	0.177 ng/ml
-----			

(f)=RT Delta > 1/2 Window

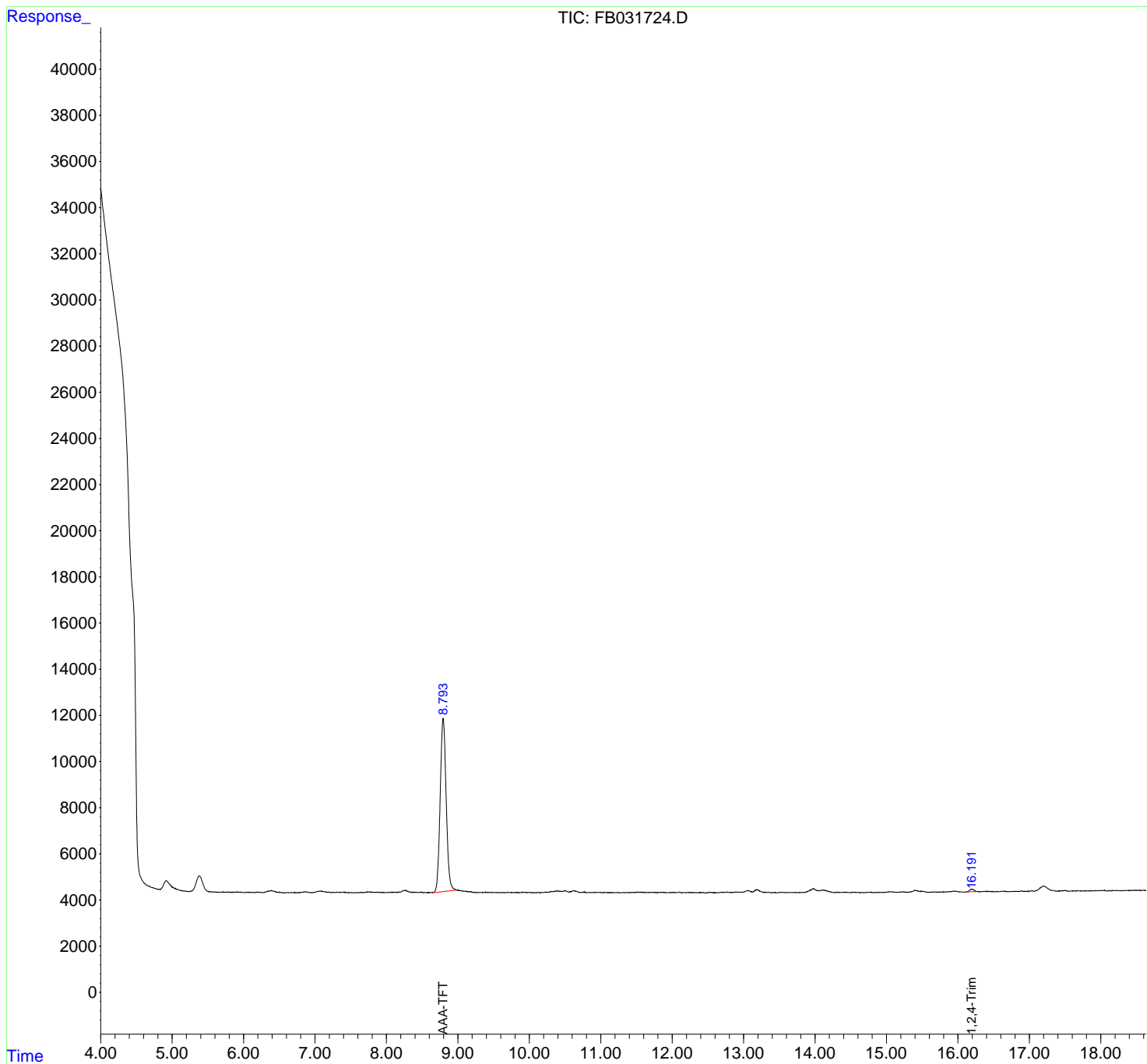
(m)=manual int.

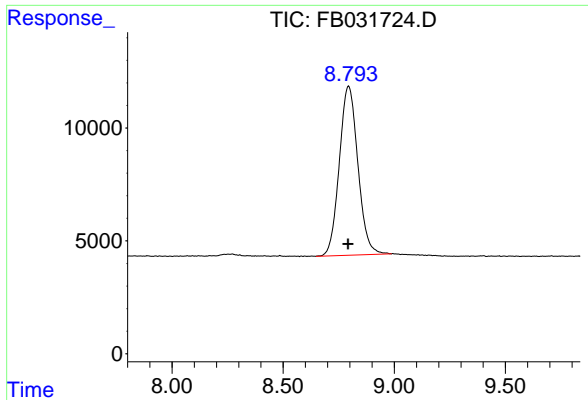
Data Path : Z:\pestpcbsrv\HPCHEM1\FID\_B\Data\FB051325\  
 Data File : FB031724.D  
 Signal(s) : FID2B.CH  
 Acq On : 13 May 2025 19:35  
 Operator : YP/AJ  
 Sample : Q1982-06  
 Misc : 7.00G/5.00 ML DI WATER  
 ALS Vial : 18 Sample Multiplier: 1

Instrument :  
 FID\_B  
 ClientSampleId :  
 TP-6

Integration File: Calibration.e  
 Quant Time: May 14 07:22:49 2025  
 Quant Method : Z:\pestpcbsrv\HPCHEM1\FID\_B\Method\FB042325.M  
 Quant Title :  
 QLast Update : Wed Apr 23 13:48:24 2025  
 Response via : Initial Calibration  
 Integrator: ChemStation

Volume Inj. : 5 g/ml  
 Signal Phase : RTX-502.2  
 Signal Info : 60mx0.53mmx3.00um

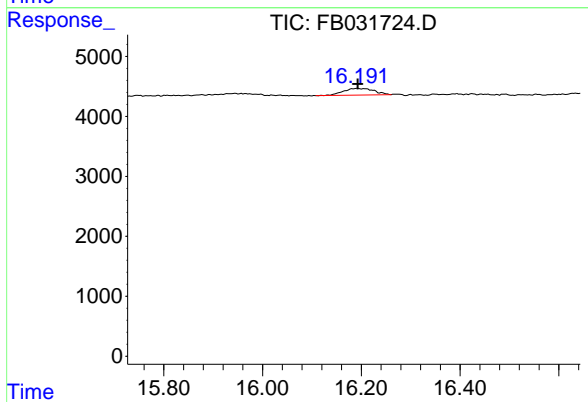




#5 AAA-TFT

R.T.: 8.795 min  
 Delta R.T.: 0.003 min  
 Response: 435726  
 Conc: 19.00 ng/ml

Instrument :  
 FID\_B  
 ClientSampleId :  
 TP-6



#10 1,2,4-Trimethylbenzene

R.T.: 16.192 min  
 Delta R.T.: 0.000 min  
 Response: 4764  
 Conc: 0.18 ng/ml