

Data Path : Z:\pestpcbsrv\HPCHEM1\FID_B\Data\FB051525\
 Data File : FB031758.D
 Signal(s) : FID2B.CH
 Acq On : 15 May 2025 16:36
 Operator : YP/AJ
 Sample : 20 PPB GRO STD
 Misc : 6.88G/5.00 ML DI WATER
 ALS Vial : 12 Sample Multiplier: 1

Instrument :
 FID_B
ClientSampleId :
 20 PPB GRO STD

Integration File: Calibration.e
 Quant Time: May 16 02:34:26 2025
 Quant Method : Z:\pestpcbsrv\HPCHEM1\FID_B\Method\FB042325.M
 Quant Title :
 QLast Update : Wed Apr 23 13:48:24 2025
 Response via : Initial Calibration
 Integrator: ChemStation

Volume Inj. : 5 g/ml
 Signal Phase : RTX-502.2
 Signal Info : 60mx0.53mmx3.00um

Compound	R.T.	Response	Conc Units

System Monitoring Compounds			
5) s AAA-TFT	8.798	360408	15.716 ng/ml
Target Compounds			
1) t 2-Methylpentane	4.730	1049304	47.221 ng/ml
2) t 2,2,4-Trimethylpentane	7.430	1213996	35.540 ng/ml
3) t n-Heptane	7.760	398936	12.970 ng/ml
4) t Benzene	7.900	461285	11.280 ng/ml
6) t Toluene	10.627	1292272	32.435 ng/ml
7) t Ethylbenzene	13.064	371996	10.410 ng/ml
8) t m-Xylene	13.197	821925	21.036 ng/ml
9) t O-Xylene	13.926	770152	20.904 ng/ml
10) t 1,2,4-Trimethylbenzene	16.200	519371	19.254 ng/ml

(f)=RT Delta > 1/2 Window

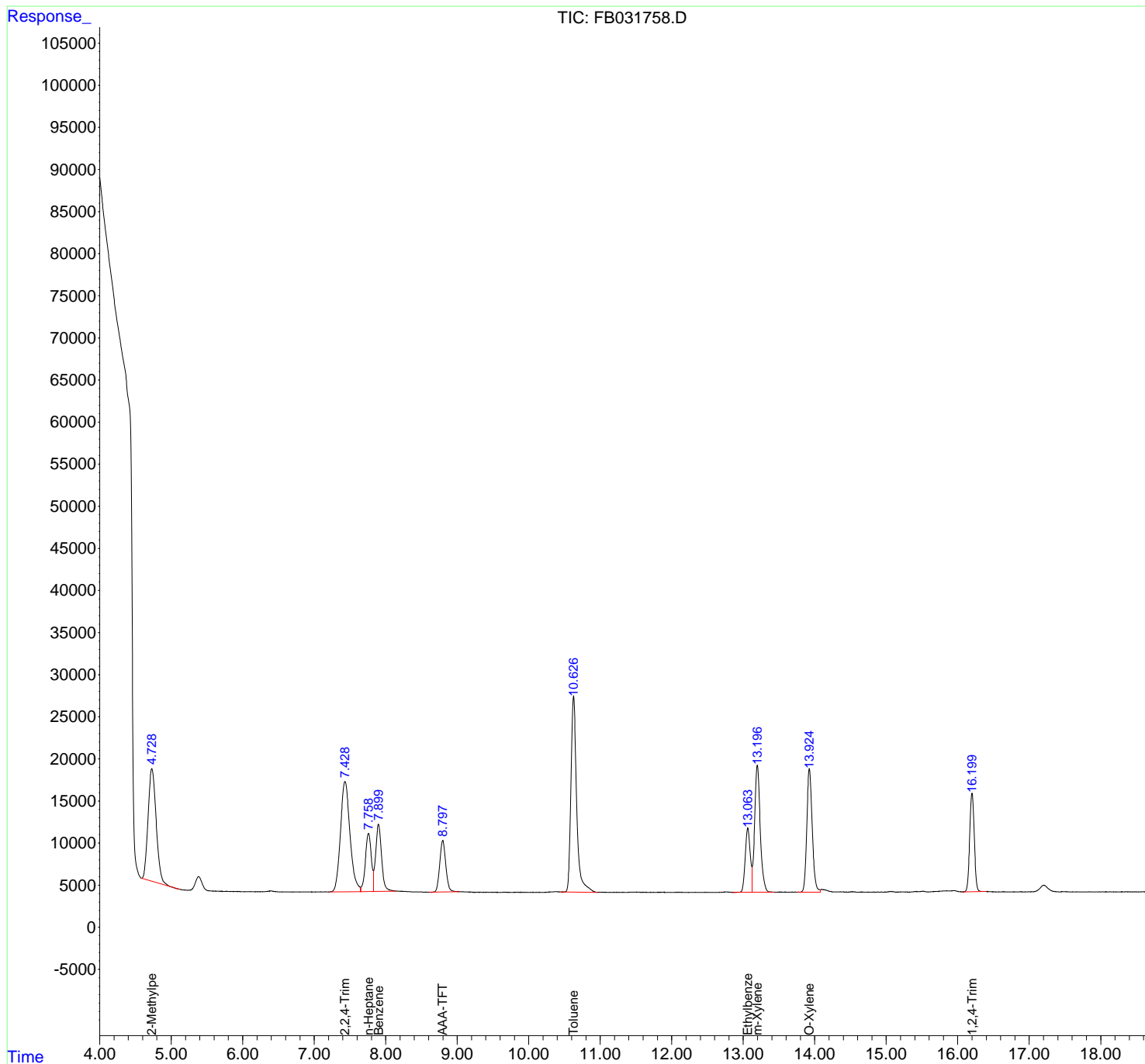
(m)=manual int.

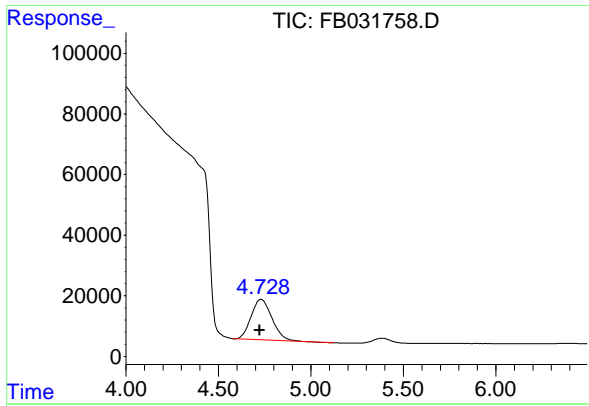
Data Path : Z:\pestpcbsrv\HPCHEM1\FID_B\Data\FB051525\
 Data File : FB031758.D
 Signal(s) : FID2B.CH
 Acq On : 15 May 2025 16:36
 Operator : YP/AJ
 Sample : 20 PPB GRO STD
 Misc : 6.88G/5.00 ML DI WATER
 ALS Vial : 12 Sample Multiplier: 1

Instrument :
 FID_B
 ClientSampleId :
 20 PPB GRO STD

Integration File: Calibration.e
 Quant Time: May 16 02:34:26 2025
 Quant Method : Z:\pestpcbsrv\HPCHEM1\FID_B\Method\FB042325.M
 Quant Title :
 QLast Update : Wed Apr 23 13:48:24 2025
 Response via : Initial Calibration
 Integrator: ChemStation

Volume Inj. : 5 g/ml
 Signal Phase : RTX-502.2
 Signal Info : 60mx0.53mmx3.00um

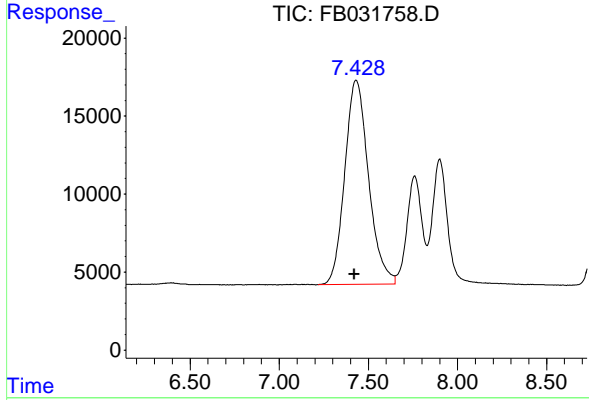




#1 2-Methylpentane

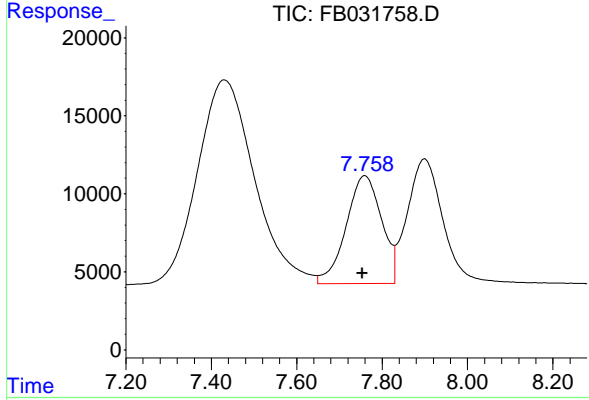
R.T.: 4.730 min
 Delta R.T.: 0.007 min
 Response: 1049304
 Conc: 47.22 ng/ml

Instrument :
 FID_B
 ClientSampleId :
 20 PPB GRO STD



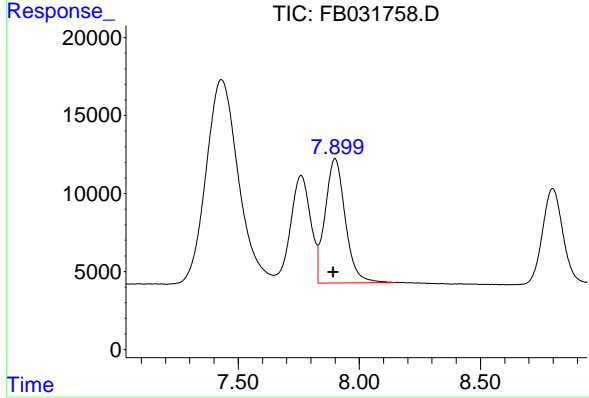
#2 2,2,4-Trimethylpentane

R.T.: 7.430 min
 Delta R.T.: 0.009 min
 Response: 1213996
 Conc: 35.54 ng/ml



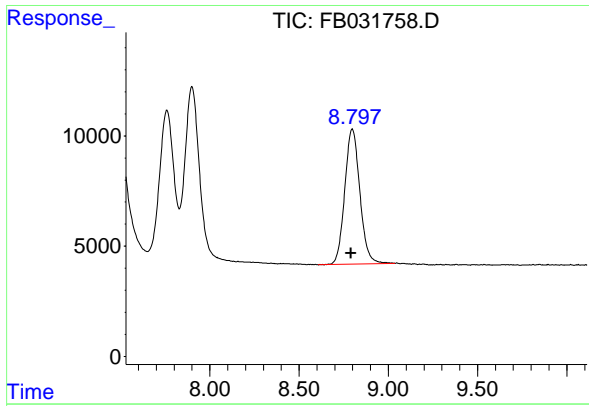
#3 n-Heptane

R.T.: 7.760 min
 Delta R.T.: 0.006 min
 Response: 398936
 Conc: 12.97 ng/ml



#4 Benzene

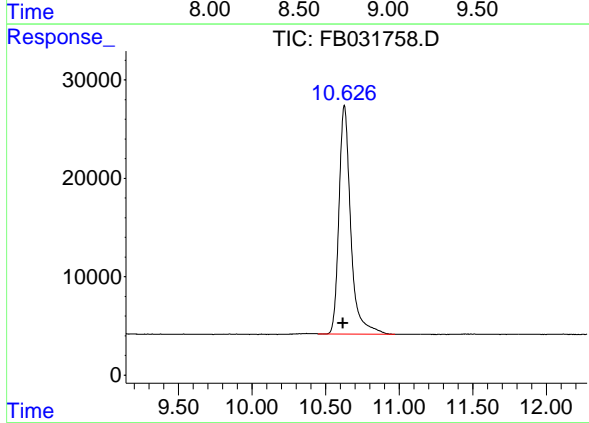
R.T.: 7.900 min
 Delta R.T.: 0.006 min
 Response: 461285
 Conc: 11.28 ng/ml



#5 AAA-TFT

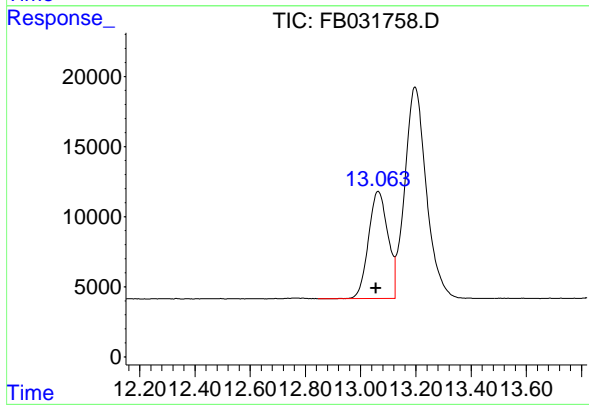
R.T.: 8.798 min
 Delta R.T.: 0.006 min
 Response: 360408
 Conc: 15.72 ng/ml

Instrument : FID_B
 ClientSampleId : 20 PPB GRO STD



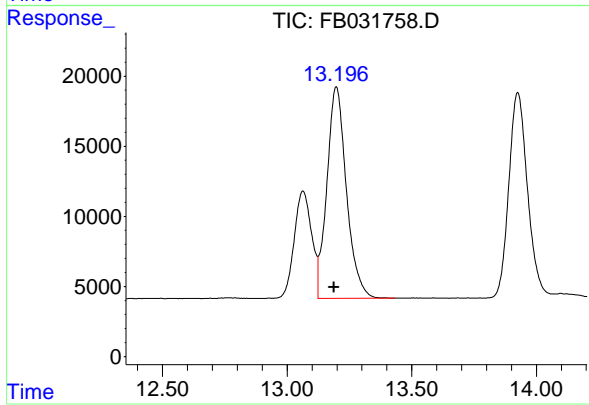
#6 Toluene

R.T.: 10.627 min
 Delta R.T.: 0.008 min
 Response: 1292272
 Conc: 32.44 ng/ml



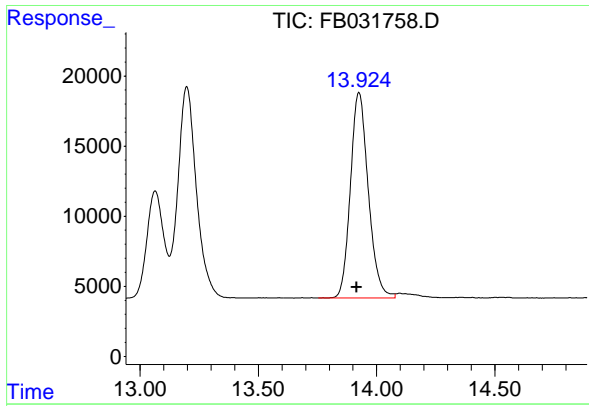
#7 Ethylbenzene

R.T.: 13.064 min
 Delta R.T.: 0.008 min
 Response: 371996
 Conc: 10.41 ng/ml



#8 m-Xylene

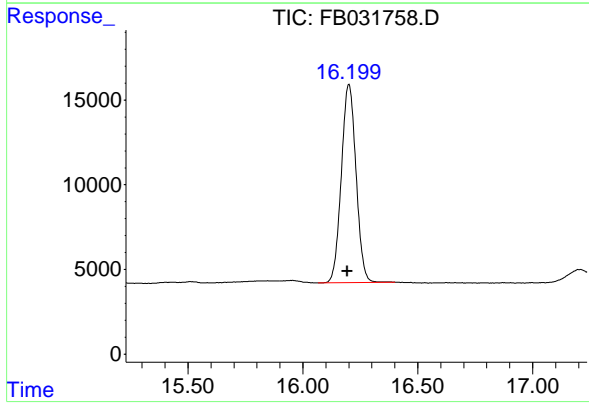
R.T.: 13.197 min
 Delta R.T.: 0.009 min
 Response: 821925
 Conc: 21.04 ng/ml



#9 O-Xylene

R.T.: 13.926 min
 Delta R.T.: 0.009 min
 Response: 770152
 Conc: 20.90 ng/ml

Instrument : FID_B
 ClientSampleId : 20 PPB GRO STD



#10 1,2,4-Trimethylbenzene

R.T.: 16.200 min
 Delta R.T.: 0.008 min
 Response: 519371
 Conc: 19.25 ng/ml