

Data Path : Z:\pestpcbsrv\HPCHEM1\FID_B\Data\FB051625\
 Data File : FB031760.D
 Signal(s) : FID2B.CH
 Acq On : 16 May 2025 8:22
 Operator : YP/AJ
 Sample : 20 PPB GRO STD
 Misc :
 ALS Vial : 1 Sample Multiplier: 1

Instrument :
 FID_B
 ClientSampleId :
 20 PPB GRO STD

Integration File: Calibration.e
 Quant Time: May 16 23:11:22 2025
 Quant Method : Z:\pestpcbsrv\HPCHEM1\FID_B\Method\FB042325.M
 Quant Title :
 QLast Update : Wed Apr 23 13:48:24 2025
 Response via : Initial Calibration
 Integrator: ChemStation

Volume Inj. : 5 g/ml
 Signal Phase : RTX-502.2
 Signal Info : 60mx0.53mmx3.00um

Compound	R.T.	Response	Conc Units

System Monitoring Compounds			
5) s AAA-TFT	8.796	455062	19.843 ng/ml
Target Compounds			
1) t 2-Methylpentane	4.732	757372	34.083 ng/ml
2) t 2,2,4-Trimethylpentane	7.429	992739	29.063 ng/ml
3) t n-Heptane	7.758	320339	10.415 ng/ml
4) t Benzene	7.898	382691	9.359 ng/ml
6) t Toluene	10.624	1084631	27.224 ng/ml
7) t Ethylbenzene	13.060	316892	8.868 ng/ml
8) t m-Xylene	13.193	699188	17.895 ng/ml
9) t O-Xylene	13.921	656502	17.819 ng/ml
10) t 1,2,4-Trimethylbenzene	16.196	472146	17.503 ng/ml

(f)=RT Delta > 1/2 Window

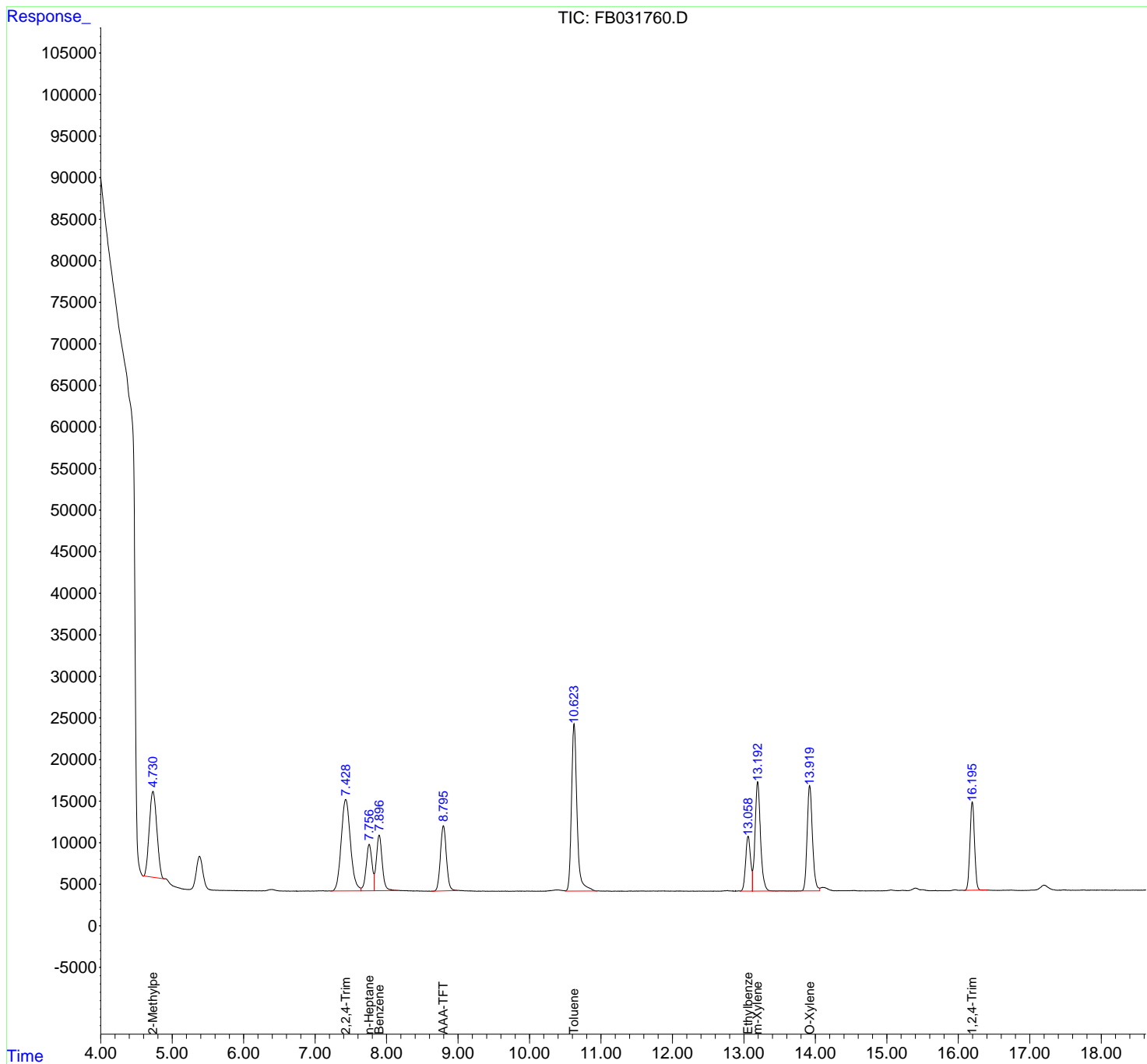
(m)=manual int.

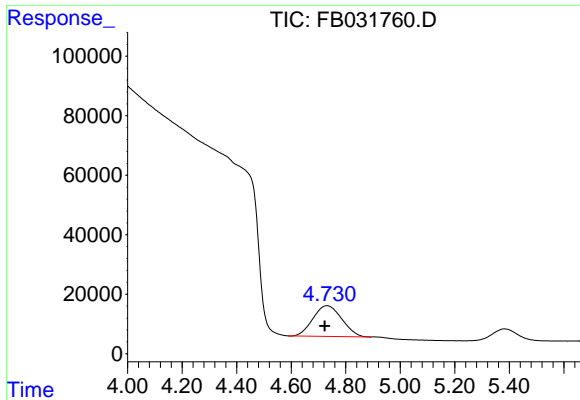
Data Path : Z:\pestpcbsrv\HPCHEM1\FID_B\Data\FB051625\
 Data File : FB031760.D
 Signal(s) : FID2B.CH
 Acq On : 16 May 2025 8:22
 Operator : YP/AJ
 Sample : 20 PPB GRO STD
 Misc :
 ALS Vial : 1 Sample Multiplier: 1

Instrument :
 FID_B
 ClientSampleId :
 20 PPB GRO STD

Integration File: Calibration.e
 Quant Time: May 16 23:11:22 2025
 Quant Method : Z:\pestpcbsrv\HPCHEM1\FID_B\Method\FB042325.M
 Quant Title :
 QLast Update : Wed Apr 23 13:48:24 2025
 Response via : Initial Calibration
 Integrator: ChemStation

Volume Inj. : 5 g/ml
 Signal Phase : RTX-502.2
 Signal Info : 60mx0.53mmx3.00um

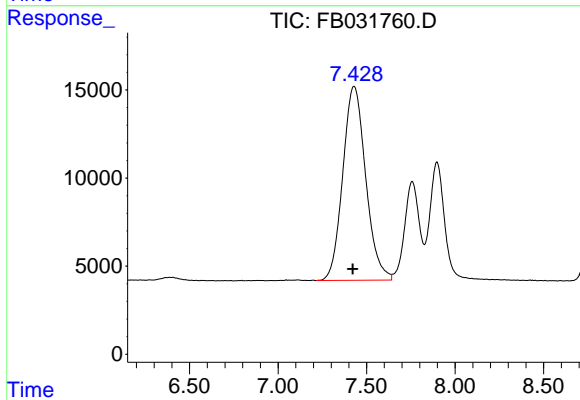




#1 2-Methylpentane

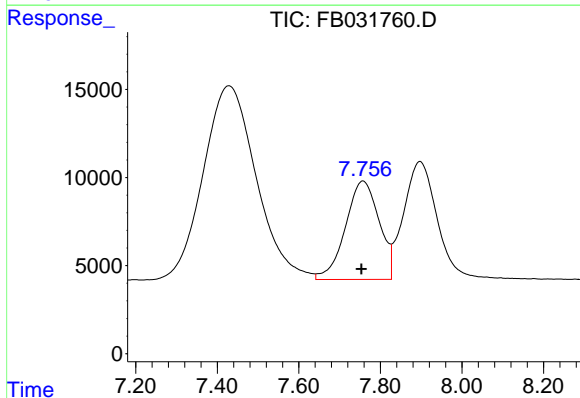
R.T.: 4.732 min
 Delta R.T.: 0.009 min
 Response: 757372
 Conc: 34.08 ng/ml

Instrument :
 FID_B
 ClientSampleId :
 20 PPB GRO STD



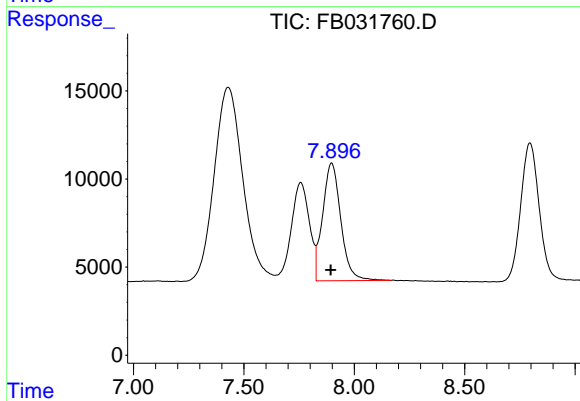
#2 2,2,4-Trimethylpentane

R.T.: 7.429 min
 Delta R.T.: 0.008 min
 Response: 992739
 Conc: 29.06 ng/ml



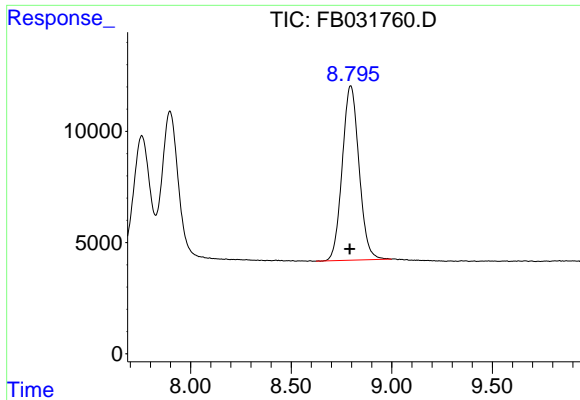
#3 n-Heptane

R.T.: 7.758 min
 Delta R.T.: 0.004 min
 Response: 320339
 Conc: 10.41 ng/ml



#4 Benzene

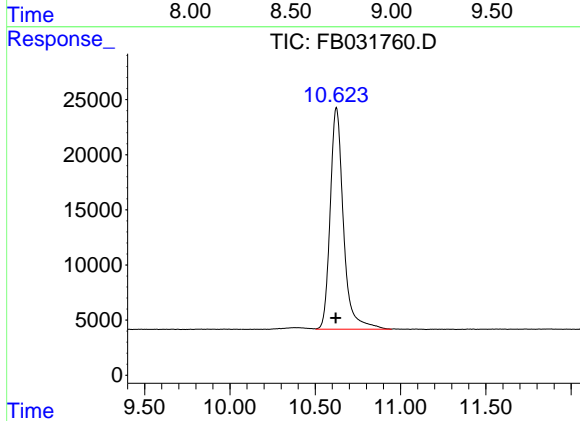
R.T.: 7.898 min
 Delta R.T.: 0.004 min
 Response: 382691
 Conc: 9.36 ng/ml



#5 AAA-TFT

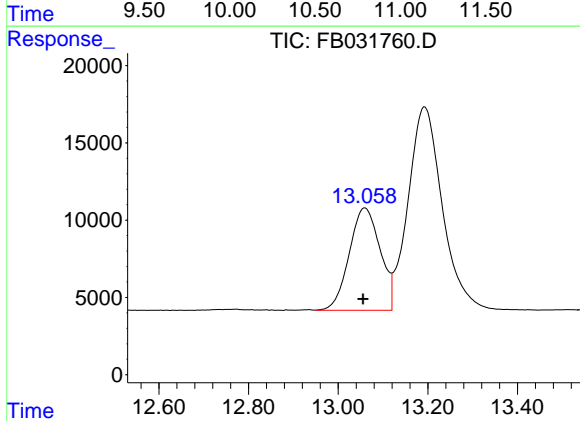
R.T.: 8.796 min
 Delta R.T.: 0.004 min
 Response: 455062
 Conc: 19.84 ng/ml

Instrument :
 FID_B
 ClientSampleId :
 20 PPB GRO STD



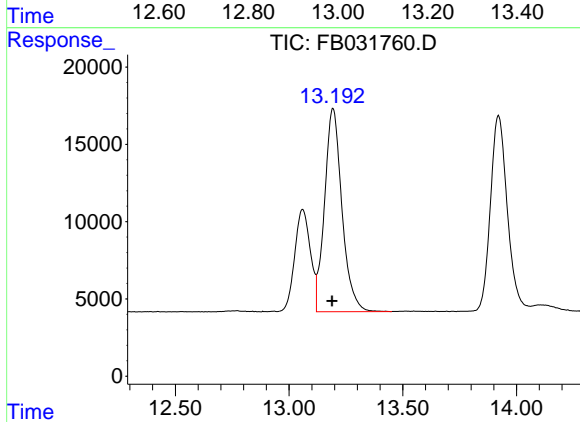
#6 Toluene

R.T.: 10.624 min
 Delta R.T.: 0.004 min
 Response: 1084631
 Conc: 27.22 ng/ml



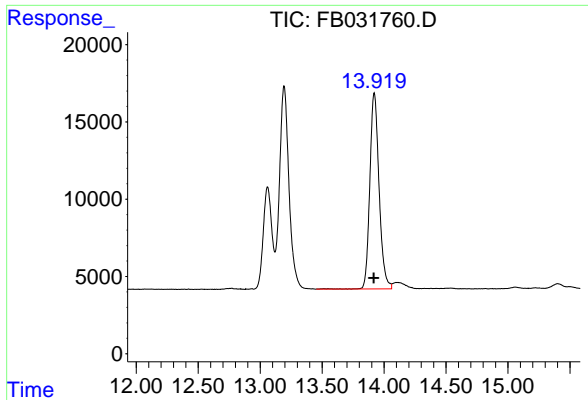
#7 Ethylbenzene

R.T.: 13.060 min
 Delta R.T.: 0.004 min
 Response: 316892
 Conc: 8.87 ng/ml



#8 m-Xylene

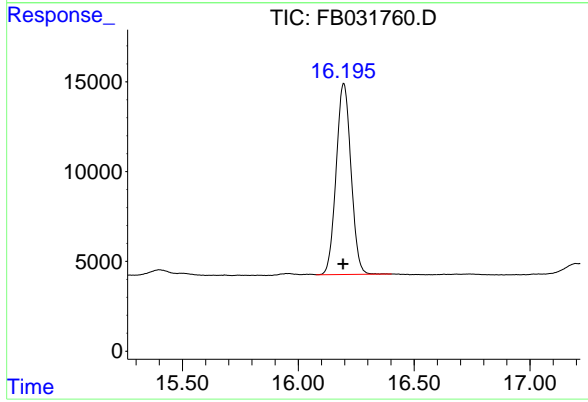
R.T.: 13.193 min
 Delta R.T.: 0.004 min
 Response: 699188
 Conc: 17.89 ng/ml



#9 O-Xylene

R.T.: 13.921 min
 Delta R.T.: 0.004 min
 Response: 656502
 Conc: 17.82 ng/ml

Instrument :
 FID_B
 ClientSampleId :
 20 PPB GRO STD



#10 1,2,4-Trimethylbenzene

R.T.: 16.196 min
 Delta R.T.: 0.004 min
 Response: 472146
 Conc: 17.50 ng/ml