

Data Path : Z:\pestpcbsrv\HPCHEM1\FID\_B\Data\FB051820\  
 Data File : FB024362.D  
 Signal(s) : FID2B.CH  
 Acq On : 18 May 2020 10:15  
 Operator : DD/AJ  
 Sample : L2503-07  
 Misc : 5.03g/5.00ml DI WATER  
 ALS Vial : 5 Sample Multiplier: 1

Integration File: Calibration.e  
 Quant Time: May 18 14:42:03 2020  
 Quant Method : Z:\pestpcbsrv\HPCHEM1\FID\_B\Method\FB051120.M  
 Quant Title :  
 QLast Update : Mon May 11 11:14:42 2020  
 Response via : Initial Calibration  
 Integrator: ChemStation

Volume Inj. : 5 g/ml  
 Signal Phase : RTX-502.2  
 Signal Info : 60mx0.53mmx3.00um

Compound	R.T.	Response	Conc Units
-----			
System Monitoring Compounds			
5) s AAA-TFT	8.797	457506	20.719 ng/ml
Target Compounds			
7) t Ethylbenzene	13.025	76784	2.265 ng/ml
9) t O-Xylene	13.924	2954	0.092 ng/ml
10) t 1,2,4-Trimethylbenzene	16.202	6388	0.237 ng/ml
-----			

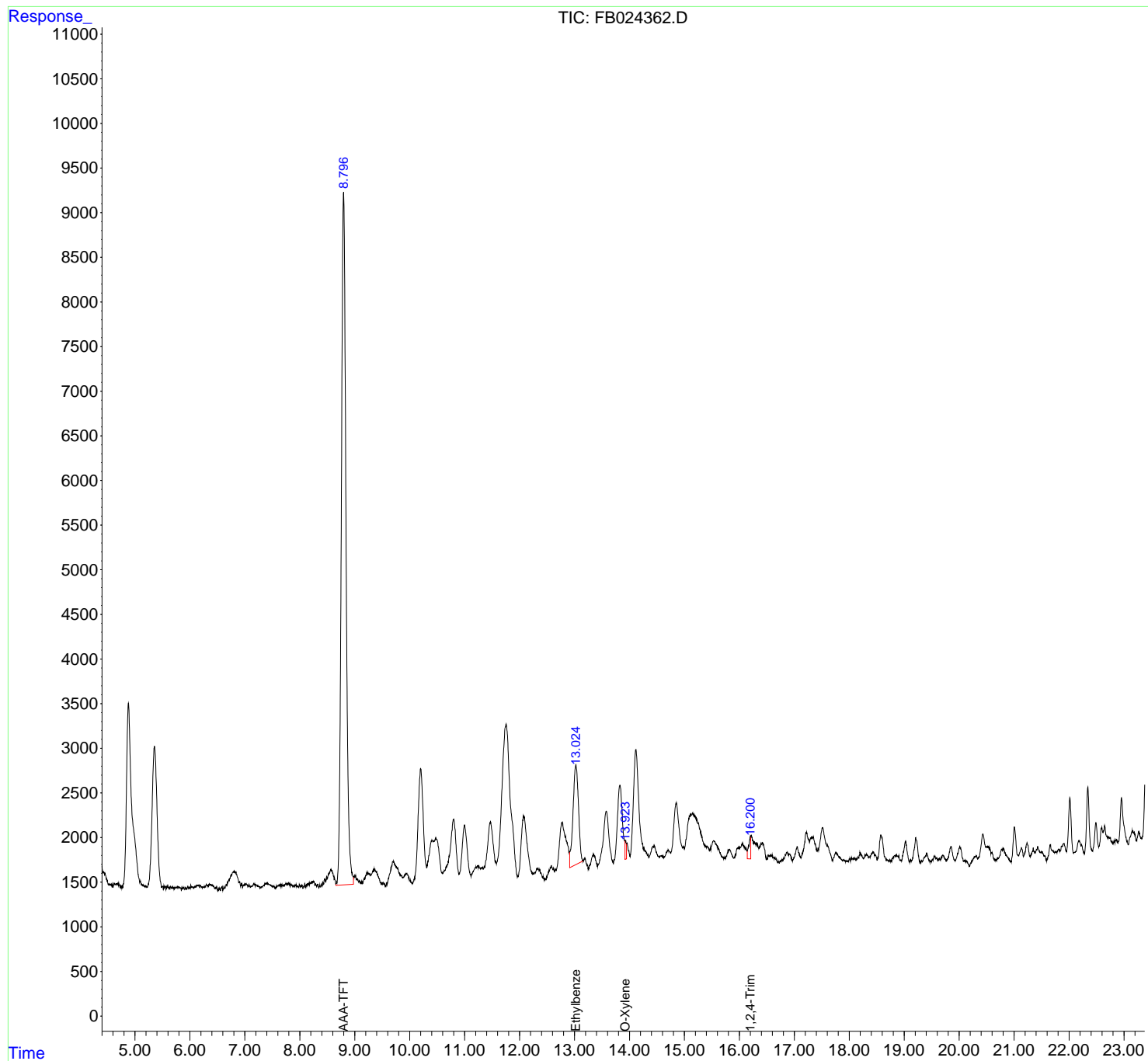
(f)=RT Delta > 1/2 Window

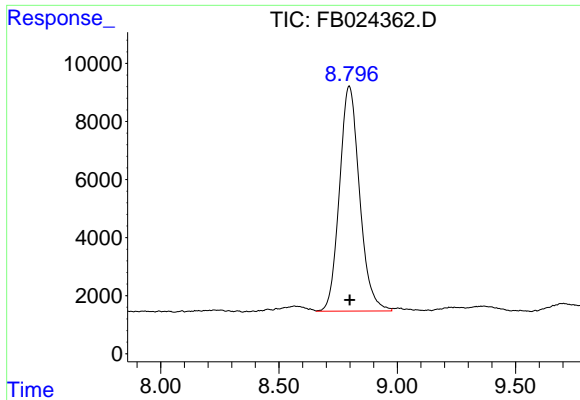
(m)=manual int.

Data Path : Z:\pestpcbsrv\HPCHEM1\FID\_B\Data\FB051820\  
Data File : FB024362.D  
Signal(s) : FID2B.CH  
Acq On : 18 May 2020 10:15  
Operator : DD/AJ  
Sample : L2503-07  
Misc : 5.03g/5.00ml DI WATER  
ALS Vial : 5 Sample Multiplier: 1

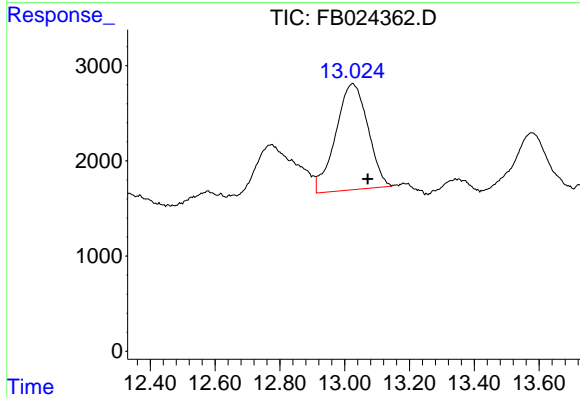
Integration File: Calibration.e  
Quant Time: May 18 14:42:03 2020  
Quant Method : Z:\pestpcbsrv\HPCHEM1\FID\_B\Method\FB051120.M  
Quant Title :  
QLast Update : Mon May 11 11:14:42 2020  
Response via : Initial Calibration  
Integrator: ChemStation

Volume Inj. : 5 g/ml  
Signal Phase : RTX-502.2  
Signal Info : 60mx0.53mmx3.00um

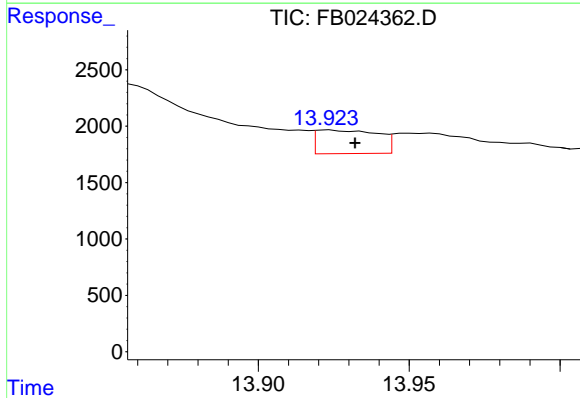




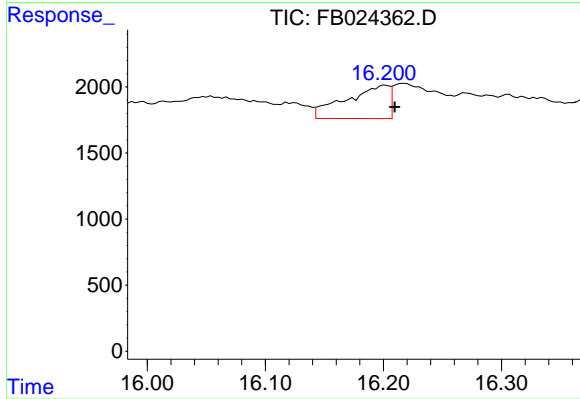
#5 AAA-TFT  
 R.T.: 8.797 min  
 Delta R.T.: -0.002 min  
 Response: 457506  
 Conc: 20.72 ng/ml



#7 Ethylbenzene  
 R.T.: 13.025 min  
 Delta R.T.: -0.046 min  
 Response: 76784  
 Conc: 2.26 ng/ml



#9 O-Xylene  
 R.T.: 13.924 min  
 Delta R.T.: -0.008 min  
 Response: 2954  
 Conc: 0.09 ng/ml



#10 1,2,4-Trimethylbenzene  
 R.T.: 16.202 min  
 Delta R.T.: -0.008 min  
 Response: 6388  
 Conc: 0.24 ng/ml