

Data Path : Z:\pestpcbsrv\HPCHEM1\FID_C\Data\FC051820AL\
 Data File : FC047496.D
 Signal(s) : FID1A.CH
 Acq On : 18 May 2020 18:45
 Operator : DD\AJ
 Sample : L2675-02
 Misc :
 ALS Vial : 11 Sample Multiplier: 1

Integration File: autoint1.e
 Quant Time: May 19 02:15:16 2020
 Quant Method : Z:\pestpcbsrv\HPCHEM1\FID_C\Method\Alaphatic EPH 050820.M
 Quant Title : GC Extractables
 QLast Update : Fri May 08 16:49:27 2020
 Response via : Initial Calibration
 Integrator: ChemStation 6890 Scale Mode: Large solvent peaks clipped

Volume Inj. : 1 ul
 Signal Phase : Rxi-1ms
 Signal Info : 20M x 0.18mm x 0.18um

Compound	R.T.	Response	Conc Units
System Monitoring Compounds			
9) S ortho-Terphenyl (SURR)	11.745	3526078	29.497 ug/ml
Spiked Amount	50.000	Recovery =	58.99%
12) S 1-chlorooctadecane (S...	13.158	2970937	30.290 ug/ml
Spiked Amount	50.000	Recovery =	60.58%
Target Compounds			
6) T n-Tetradecane (C14)	8.361	114836	1.086 ug/ml
10) T n-Eicosane (C20)	12.700	144799	1.273 ug/ml
13) T n-Docosane (C22)	13.861	53120	0.467 ug/ml
14) T n-Tetracosane (C24)	14.996	651131	5.755 ug/ml
16) T n-Octacosane (C28)	16.947	747372	6.701 ug/ml
17) T n-Tricontane (C30)	17.836	387782	3.587 ug/ml
18) T n-Dotriacontane (C32)	18.665	174254	1.767 ug/ml
20) T n-Hexatriacontane (C36)	20.186	43907	0.506 ug/ml

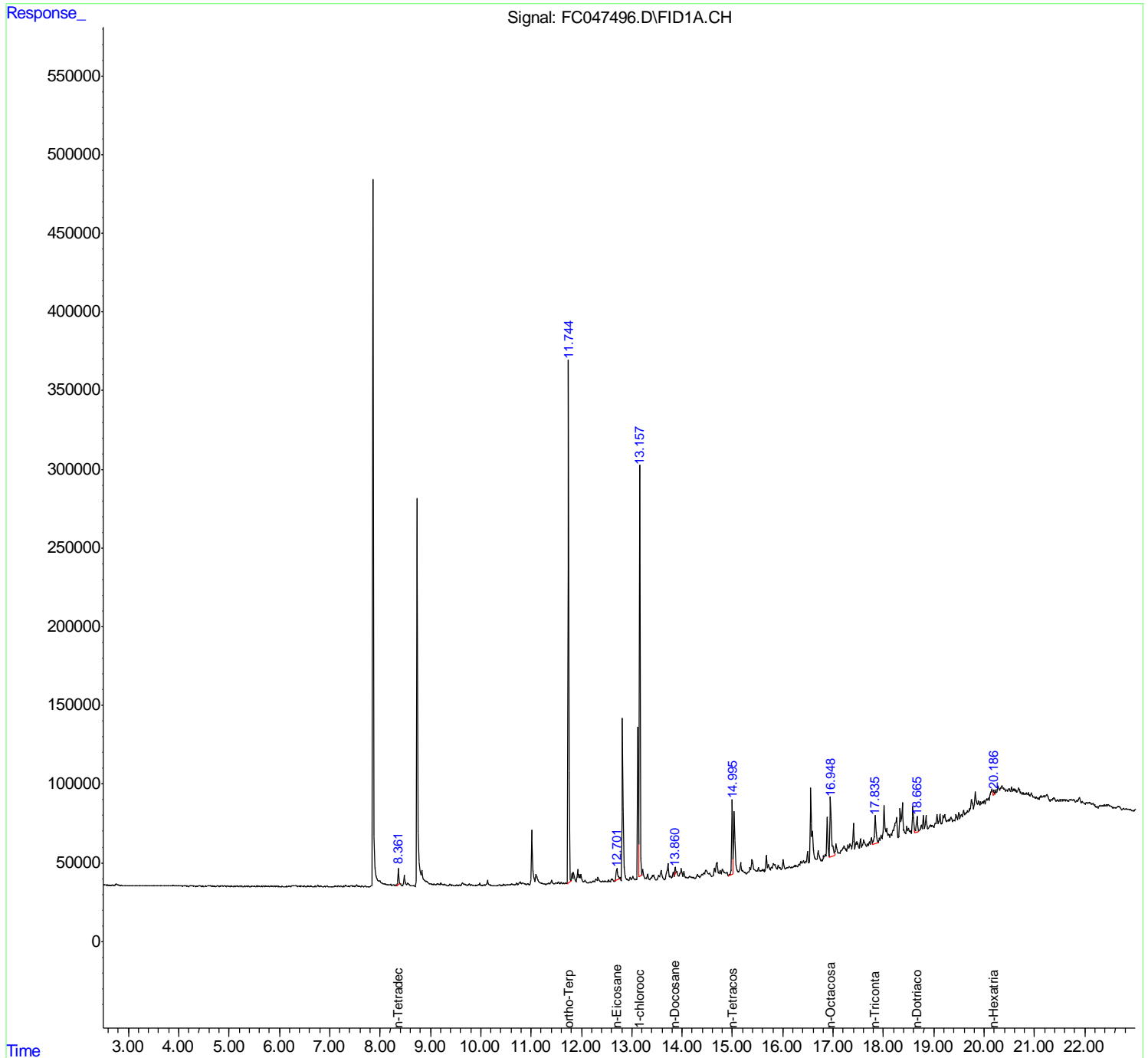
(f)=RT Delta > 1/2 Window

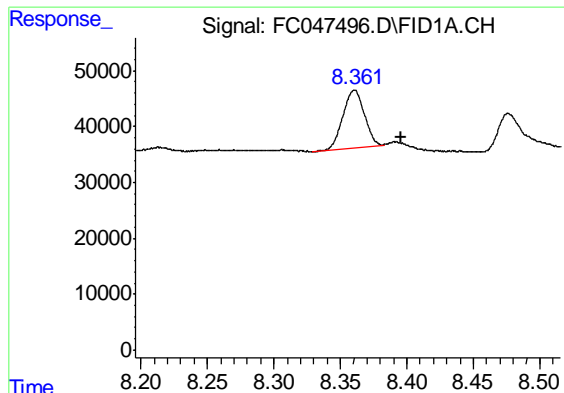
(m)=manual int.

Data Path : Z:\pestpcbsrv\HPCHEM1\FID_C\Data\FC051820AL\
 Data File : FC047496.D
 Signal(s) : FID1A.CH
 Acq On : 18 May 2020 18:45
 Operator : DD\AJ
 Sample : L2675-02
 Misc :
 ALS Vial : 11 Sample Multiplier: 1

Integration File: autoint1.e
 Quant Time: May 19 02:15:16 2020
 Quant Method : Z:\pestpcbsrv\HPCHEM1\FID_C\Method\Aliphatic EPH 050820.M
 Quant Title : GC Extractables
 QLast Update : Fri May 08 16:49:27 2020
 Response via : Initial Calibration
 Integrator: ChemStation 6890 Scale Mode: Large solvent peaks clipped

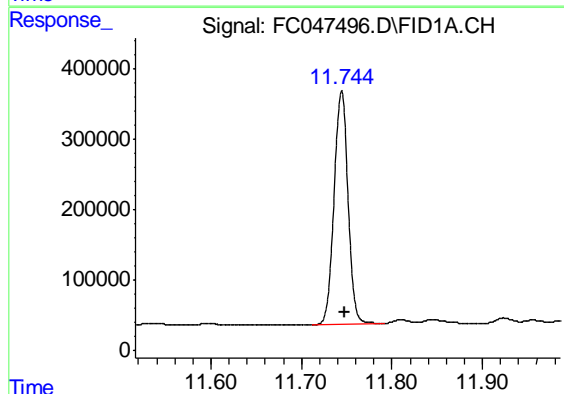
Volume Inj. : 1 ul
 Signal Phase : Rxi-1ms
 Signal Info : 20M x 0.18mm x 0.18um





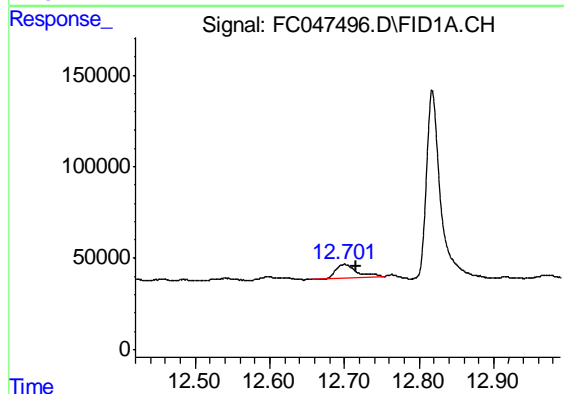
#6 n-Tetradecane (C14)

R.T.: 8.361 min
Delta R.T.: -0.035 min
Response: 114836
Conc: 1.09 ug/ml



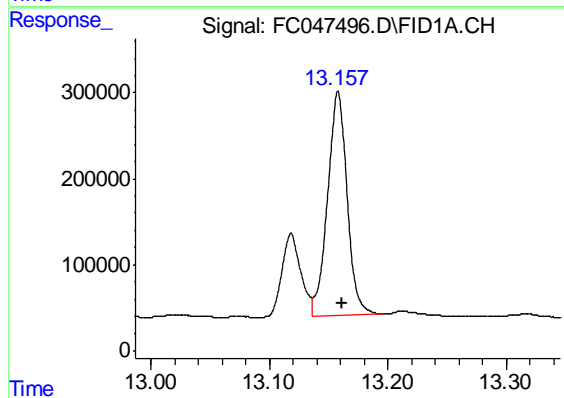
#9 ortho-Terphenyl (SURR)

R.T.: 11.745 min
Delta R.T.: -0.003 min
Response: 3526078
Conc: 29.50 ug/ml



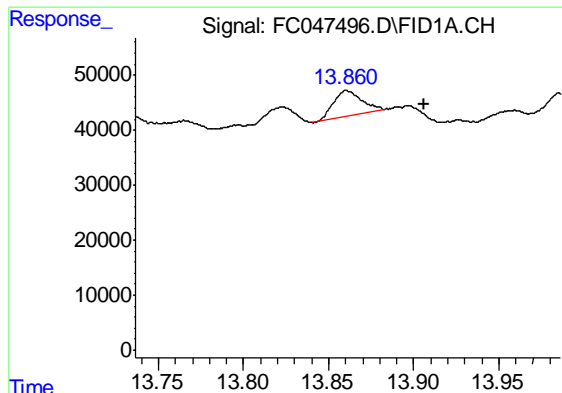
#10 n-Eicosane (C20)

R.T.: 12.700 min
Delta R.T.: -0.015 min
Response: 144799
Conc: 1.27 ug/ml



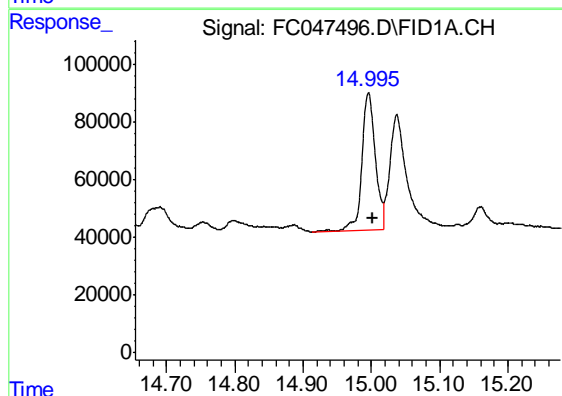
#12 1-chlorooctadecane (SURR)

R.T.: 13.158 min
Delta R.T.: -0.003 min
Response: 2970937
Conc: 30.29 ug/ml



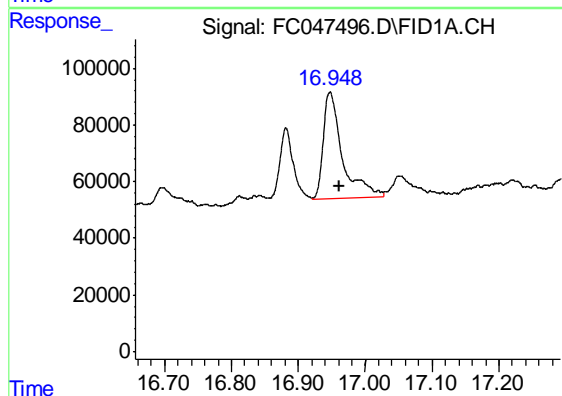
#13 n-Docosane (C22)

R.T.: 13.861 min
Delta R.T.: -0.046 min
Response: 53120
Conc: 0.47 ug/ml



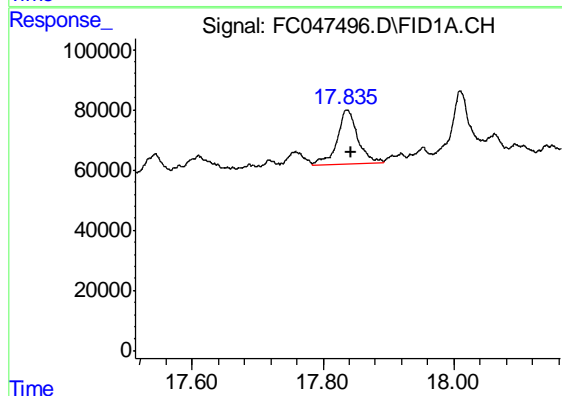
#14 n-Tetracosane (C24)

R.T.: 14.996 min
Delta R.T.: -0.006 min
Response: 651131
Conc: 5.75 ug/ml



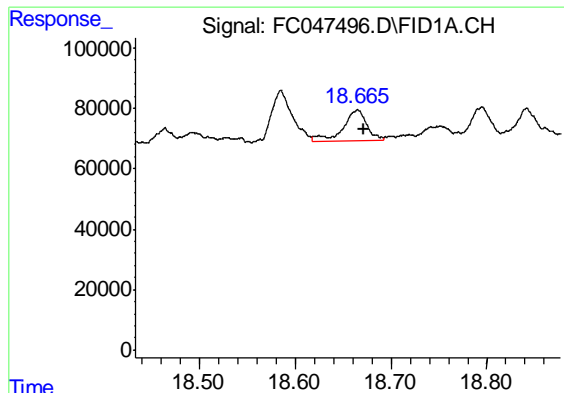
#16 n-Octacosane (C28)

R.T.: 16.947 min
Delta R.T.: -0.013 min
Response: 747372
Conc: 6.70 ug/ml



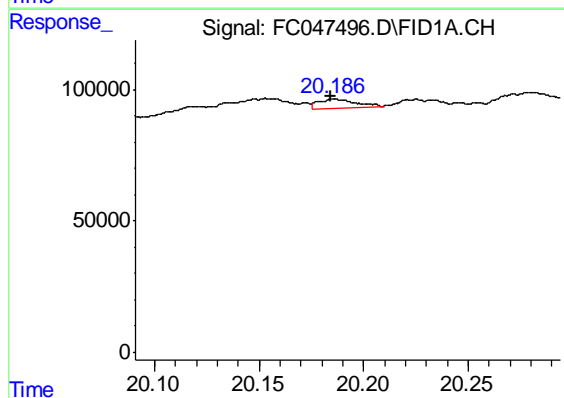
#17 n-Tricontane (C30)

R.T.: 17.836 min
Delta R.T.: -0.006 min
Response: 387782
Conc: 3.59 ug/ml



#18 n-Dotriacontane (C32)

R.T.: 18.665 min
Delta R.T.: -0.006 min
Response: 174254
Conc: 1.77 ug/ml



#20 n-Hexatriacontane (C36)

R.T.: 20.186 min
Delta R.T.: 0.002 min
Response: 43907
Conc: 0.51 ug/ml