

Data Path : Z:\pestpcbsrv\HPCHEM1\FID\_B\Data\FB052019\  
 Data File : FB021108.D  
 Signal(s) : FID2B.CH  
 Acq On : 20 May 2019 14:20  
 Operator : MJ/SJ  
 Sample : K2943-15  
 Misc : 5.06g/5.00ml DI WATER  
 ALS Vial : 11 Sample Multiplier: 1

Instrument :  
 FID\_B  
 ClientSampleId :

Integration File: Calibration.e  
 Quant Time: May 21 01:24:06 2019  
 Quant Method : Z:\pestpcbsrv\HPCHEM1\FID\_B\Method\FB042919.M  
 Quant Title :  
 QLast Update : Mon Apr 29 15:53:58 2019  
 Response via : Initial Calibration  
 Integrator: ChemStation

Volume Inj. : 5 g/ml  
 Signal Phase : RTX-502.2  
 Signal Info : 60mx0.53mmx3.00um

Compound	R.T.	Response	Conc Units
-----			
System Monitoring Compounds			
5) s AAA-TFT	8.999	400696	22.336 ng/ml
Target Compounds			
-----			

(f)=RT Delta > 1/2 Window

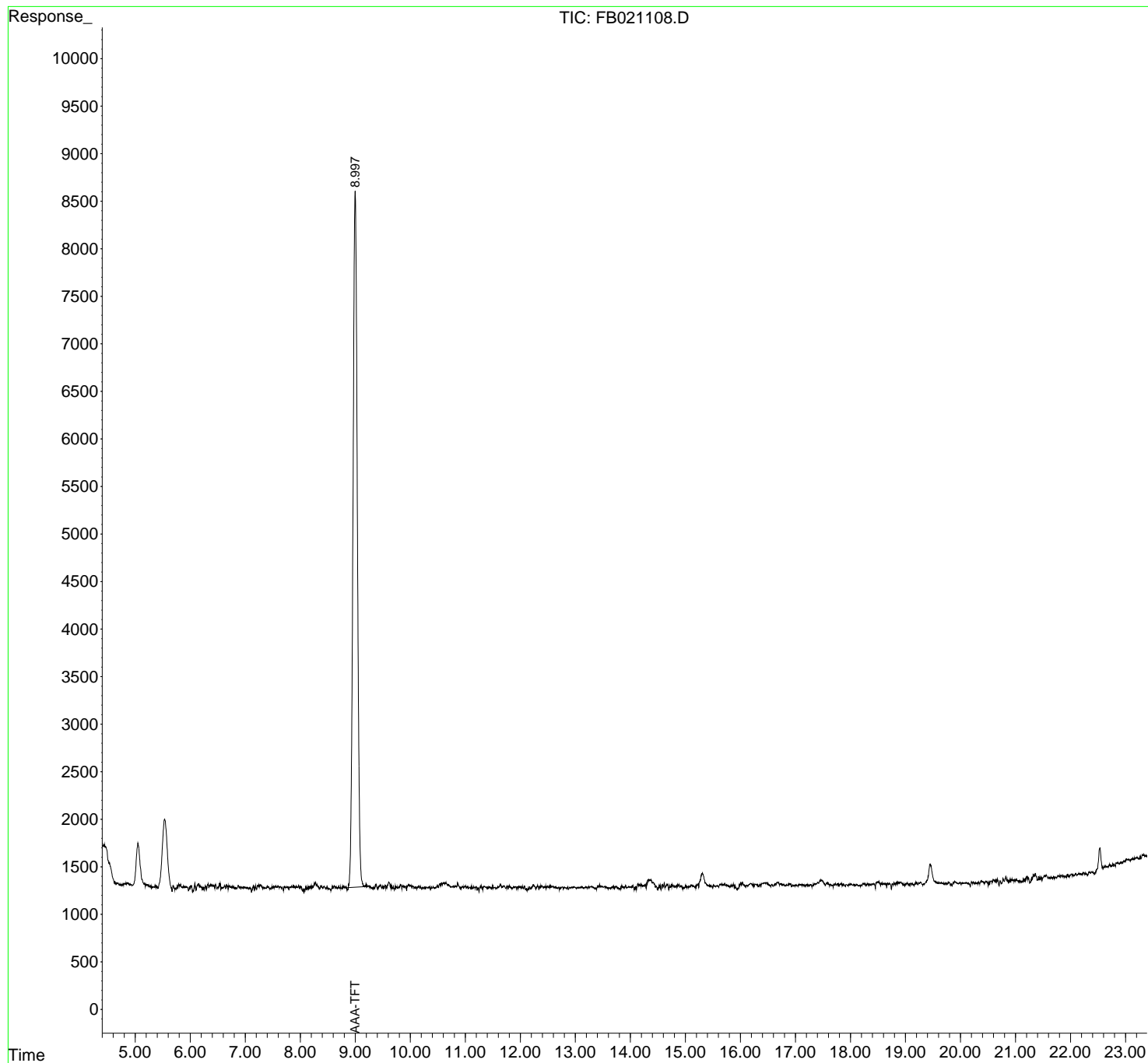
(m)=manual int.

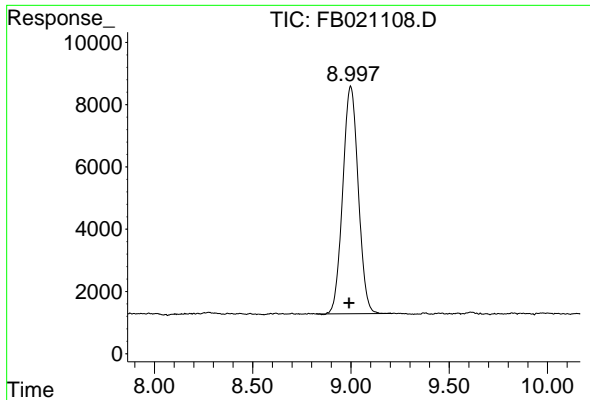
Data Path : Z:\pestpcbsrv\HPCHEM1\FID\_B\Data\FB052019\  
 Data File : FB021108.D  
 Signal(s) : FID2B.CH  
 Acq On : 20 May 2019 14:20  
 Operator : MJ/SJ  
 Sample : K2943-15  
 Misc : 5.06g/5.00ml DI WATER  
 ALS Vial : 11 Sample Multiplier: 1

Instrument :  
 FID\_B  
 ClientSampleId :

Integration File: Calibration.e  
 Quant Time: May 21 01:24:06 2019  
 Quant Method : Z:\pestpcbsrv\HPCHEM1\FID\_B\Method\FB042919.M  
 Quant Title :  
 QLast Update : Mon Apr 29 15:53:58 2019  
 Response via : Initial Calibration  
 Integrator: ChemStation

Volume Inj. : 5 g/ml  
 Signal Phase : RTX-502.2  
 Signal Info : 60mx0.53mmx3.00um





#5 AAA-TFT

R.T.: 8.999 min  
Delta R.T.: 0.007 min  
Response: 400696  
Conc: 22.34 ng/ml

Instrument :  
FID\_B  
ClientSampleId :