

Data Path : Z:\pestpcbsrv\HPCHEM1\FID_B\Data\FB052620\
 Data File : FB024391.D
 Signal(s) : FID2B.CH
 Acq On : 26 May 2020 15:48
 Operator : DD/AJ
 Sample : L2500-07MS
 Misc : 5.01g/5.00ml DI WATER
 ALS Vial : 8 Sample Multiplier: 1

Integration File: Calibration.e
 Quant Time: May 27 00:57:03 2020
 Quant Method : Z:\pestpcbsrv\HPCHEM1\FID_B\Method\FB051120.M
 Quant Title :
 QLast Update : Mon May 11 11:14:42 2020
 Response via : Initial Calibration
 Integrator: ChemStation

Volume Inj. : 5 g/ml
 Signal Phase : RTX-502.2
 Signal Info : 60mx0.53mmx3.00um

Compound	R.T.	Response	Conc Units

System Monitoring Compounds			
5) s AAA-TFT	8.804	542819	24.582 ng/ml
Target Compounds			
1) t 2-Methylpentane	4.694	1002002	33.955 ng/ml
2) t 2,2,4-Trimethylpentane	7.423	1053056	34.471 ng/ml
3) t n-Heptane	7.763	329955	10.891 ng/ml
4) t Benzene	7.897	439084	11.614 ng/ml
6) t Toluene	10.635	1230822	33.966 ng/ml
7) t Ethylbenzene	13.075	374129	11.036 ng/ml
8) t m-Xylene	13.207	732309	22.191 ng/ml
9) t O-Xylene	13.935	720451	22.326 ng/ml
10) t 1,2,4-Trimethylbenzene	16.212	597484	22.154 ng/ml

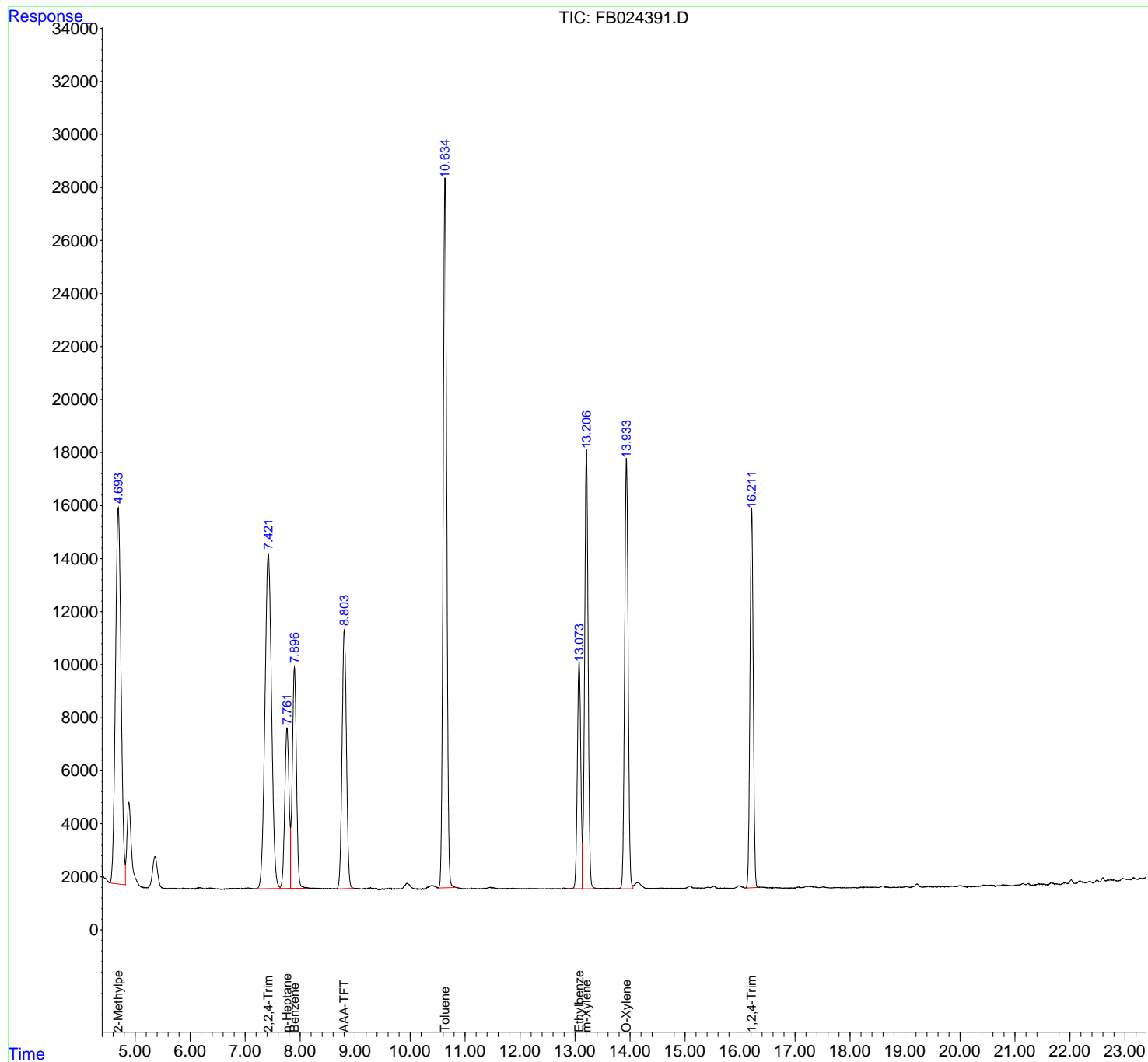
(f)=RT Delta > 1/2 Window

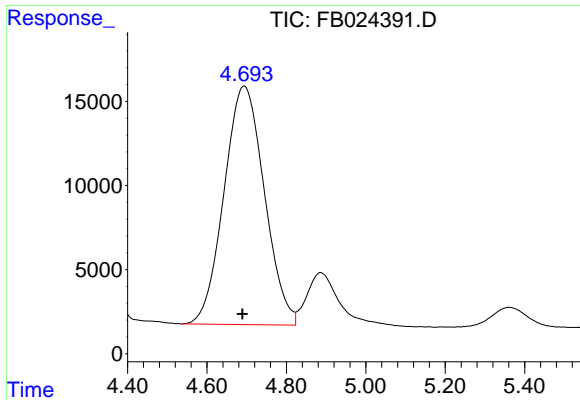
(m)=manual int.

Data Path : Z:\pestpcbsrv\HPCHEM1\FID_B\Data\FB052620\
Data File : FB024391.D
Signal(s) : FID2B.CH
Acq On : 26 May 2020 15:48
Operator : DD/AJ
Sample : L2500-07MS
Misc : 5.01g/5.00ml DI WATER
ALS Vial : 8 Sample Multiplier: 1

Integration File: Calibration.e
Quant Time: May 27 00:57:03 2020
Quant Method : Z:\pestpcbsrv\HPCHEM1\FID_B\Method\FB051120.M
Quant Title :
QLast Update : Mon May 11 11:14:42 2020
Response via : Initial Calibration
Integrator: ChemStation

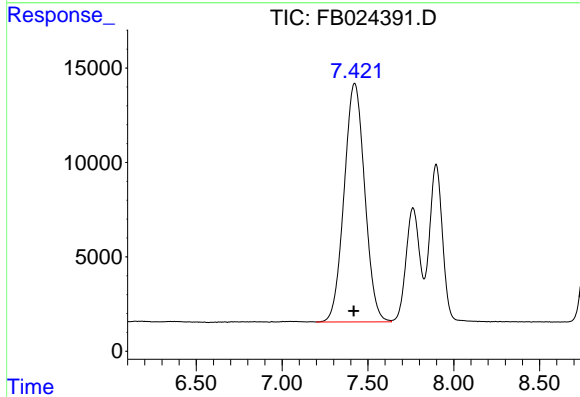
Volume Inj. : 5 g/ml
Signal Phase : RTX-502.2
Signal Info : 60mx0.53mmx3.00um





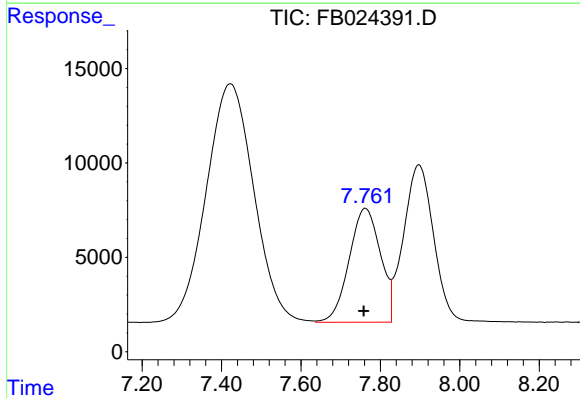
#1 2-Methylpentane

R.T.: 4.694 min
 Delta R.T.: 0.005 min
 Response: 1002002
 Conc: 33.95 ng/ml



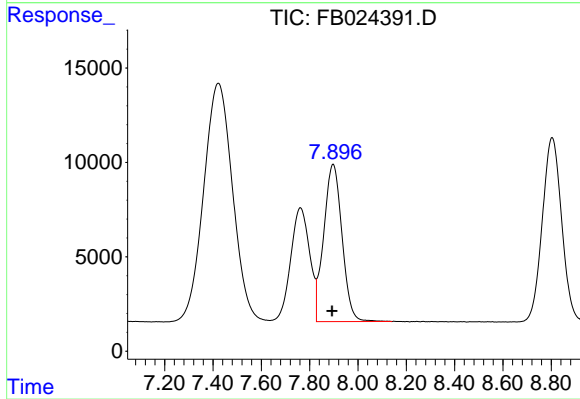
#2 2,2,4-Trimethylpentane

R.T.: 7.423 min
 Delta R.T.: 0.006 min
 Response: 1053056
 Conc: 34.47 ng/ml



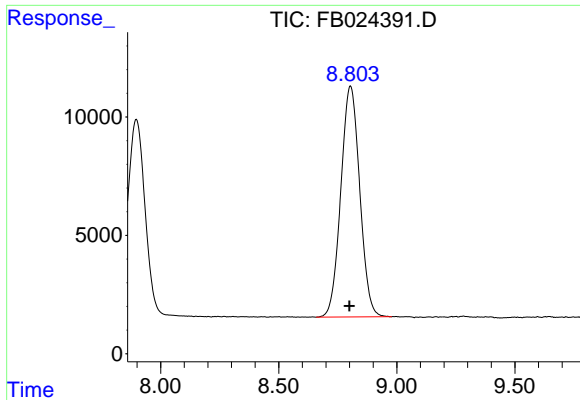
#3 n-Heptane

R.T.: 7.763 min
 Delta R.T.: 0.005 min
 Response: 329955
 Conc: 10.89 ng/ml

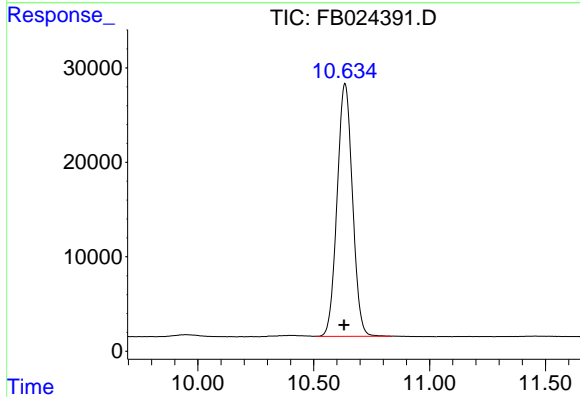


#4 Benzene

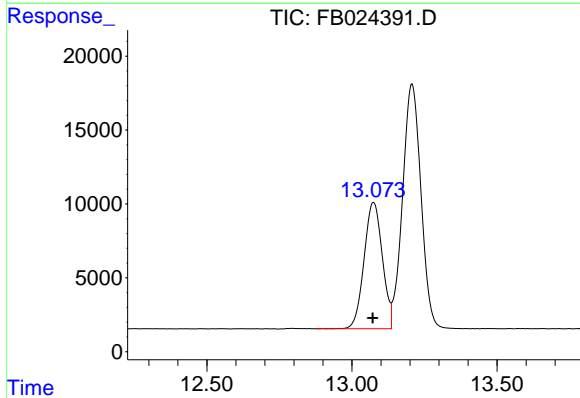
R.T.: 7.897 min
 Delta R.T.: 0.005 min
 Response: 439084
 Conc: 11.61 ng/ml



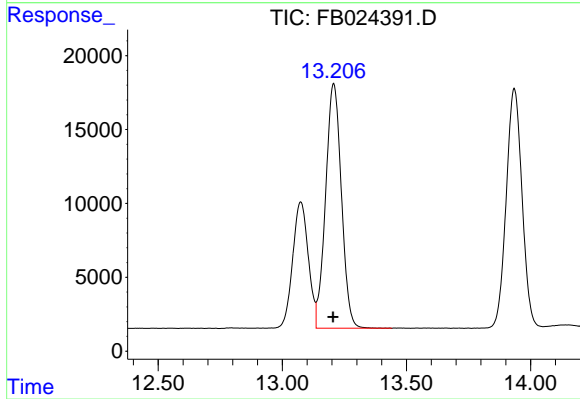
#5 AAA-TFT
 R.T.: 8.804 min
 Delta R.T.: 0.005 min
 Response: 542819
 Conc: 24.58 ng/ml



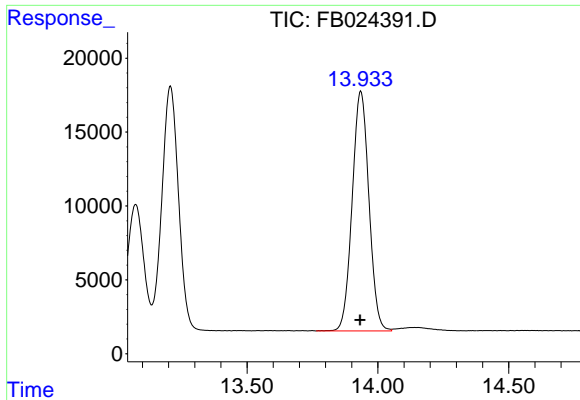
#6 Toluene
 R.T.: 10.635 min
 Delta R.T.: 0.005 min
 Response: 1230822
 Conc: 33.97 ng/ml



#7 Ethylbenzene
 R.T.: 13.075 min
 Delta R.T.: 0.003 min
 Response: 374129
 Conc: 11.04 ng/ml

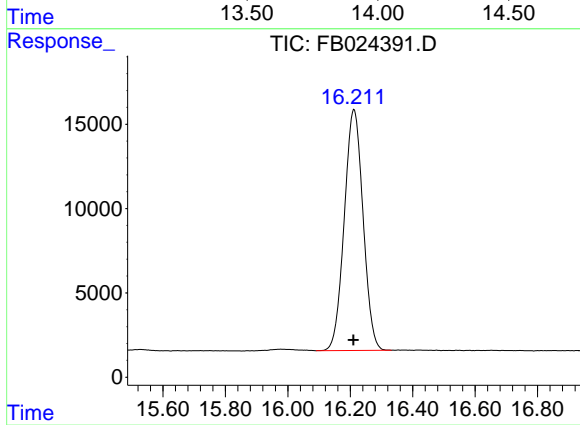


#8 m-Xylene
 R.T.: 13.207 min
 Delta R.T.: 0.003 min
 Response: 732309
 Conc: 22.19 ng/ml



#9 O-Xylene

R.T.: 13.935 min
Delta R.T.: 0.003 min
Response: 720451
Conc: 22.33 ng/ml



#10 1,2,4-Trimethylbenzene

R.T.: 16.212 min
Delta R.T.: 0.003 min
Response: 597484
Conc: 22.15 ng/ml