

Data Path : P:\HPCHEM1\FID_B\Data\FB052918\
Data File : FB015811.D
Signal(s) : FID2B.CH
Acq On : 29 May 2018 13:13
Operator : MJ/SJ
Sample : J3073-01
Misc : 5.33g/5.00mL DI Water
ALS Vial : 6 Sample Multiplier: 1

Instrument :
FID_B
ClientSampleId :
EPE-118-3(0-5)

Integration File: Calibration.e
Quant Time: May 29 14:37:11 2018
Quant Method : P:\HPCHEM1\FID_B\Method\FB052418.M
Quant Title :
QLast Update : Thu May 24 11:17:17 2018
Response via : Initial Calibration
Integrator: ChemStation

Volume Inj. : 5 g/ml
Signal Phase : RTX-502.2
Signal Info : 60mx0.53mmx3.00um

Compound	R.T.	Response	Conc Units

System Monitoring Compounds			
5) s AAA-TFT	9.117	187379	21.615 ng/ml
Target Compounds			

(f)=RT Delta > 1/2 Window

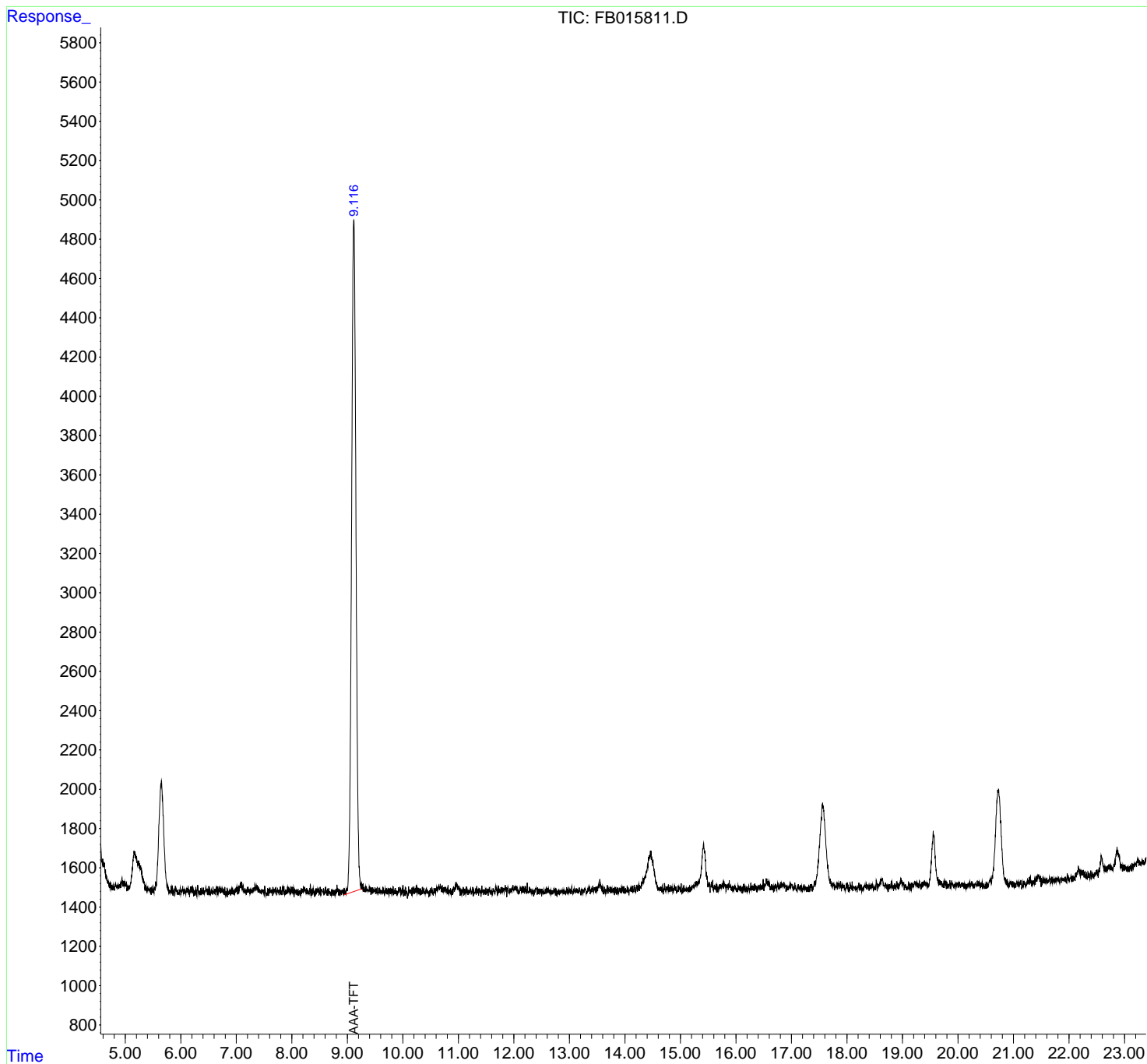
(m)=manual int.

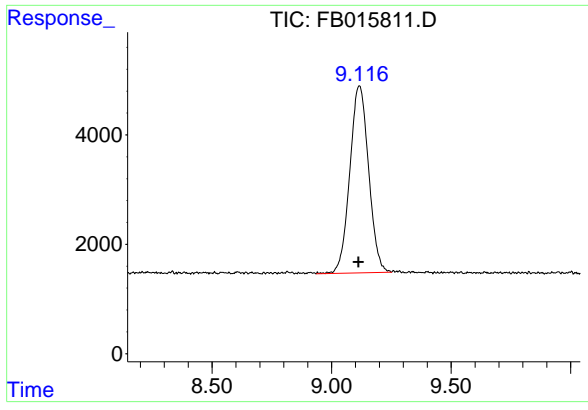
Data Path : P:\HPCHEM1\FID_B\Data\FB052918\
 Data File : FB015811.D
 Signal(s) : FID2B.CH
 Acq On : 29 May 2018 13:13
 Operator : MJ/SJ
 Sample : J3073-01
 Misc : 5.33g/5.00mL DI Water
 ALS Vial : 6 Sample Multiplier: 1

Instrument :
 FID_B
 ClientSampleId :
 EPE-118-3(0-5)

Integration File: Calibration.e
 Quant Time: May 29 14:37:11 2018
 Quant Method : P:\HPCHEM1\FID_B\Method\FB052418.M
 Quant Title :
 QLast Update : Thu May 24 11:17:17 2018
 Response via : Initial Calibration
 Integrator: ChemStation

Volume Inj. : 5 g/ml
 Signal Phase : RTX-502.2
 Signal Info : 60mx0.53mmx3.00um





#5 AAA-TFT

R.T.: 9.117 min
Delta R.T.: 0.004 min
Response: 187379
Conc: 21.62 ng/ml

Instrument :
FID_B
ClientSampleId :
EPE-118-3(0-5)