

Data Path : Z:\pestpcbsrv\HPCHEM1\FID_B\Data\FB060225\
 Data File : FB031853.D
 Signal(s) : FID2B.CH
 Acq On : 2 Jun 2025 20:39
 Operator : YP/AJ
 Sample : Q2150-04
 Misc : 5.46G/5.00 ML DI WATER
 ALS Vial : 24 Sample Multiplier: 1

Instrument :
 FID_B
 ClientSampleId :
 TP-48

Integration File: Calibration.e
 Quant Time: Jun 03 05:29:40 2025
 Quant Method : Z:\pestpcbsrv\HPCHEM1\FID_B\Method\FB053025.M
 Quant Title :
 QLast Update : Fri May 30 15:30:47 2025
 Response via : Initial Calibration
 Integrator: ChemStation

Volume Inj. : 5 g/ml
 Signal Phase : RTX-502.2
 Signal Info : 60mx0.53mmx3.00um

Compound	R.T.	Response	Conc Units
----------	------	----------	------------

 System Monitoring Compounds

Target Compounds

(f)=RT Delta > 1/2 Window

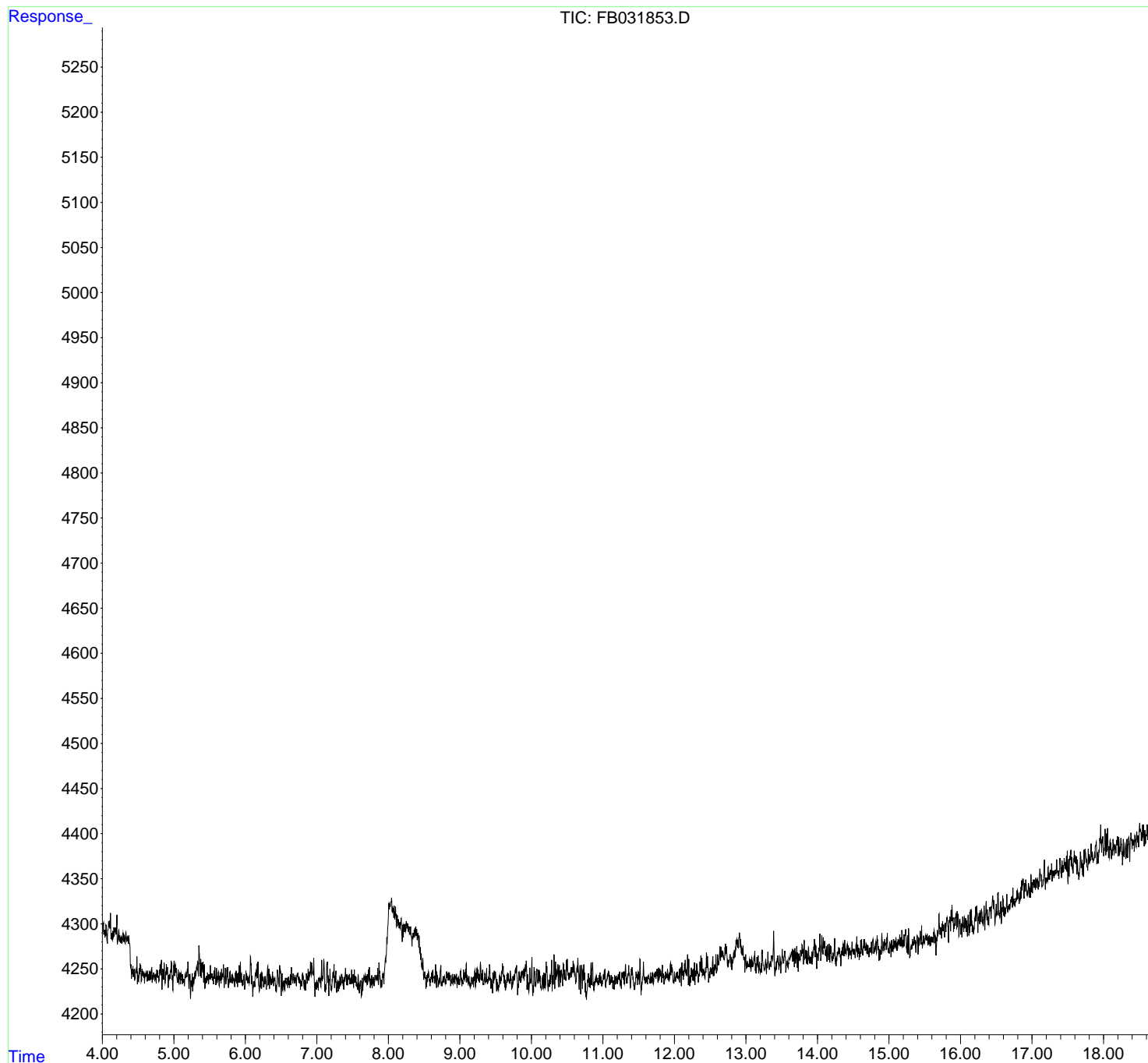
(m)=manual int.

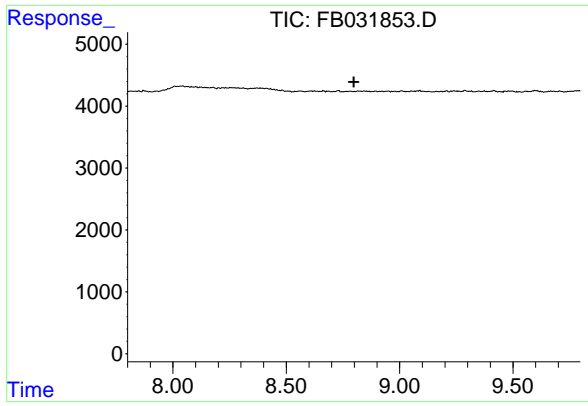
Data Path : Z:\pestpcbsrv\HPCHEM1\FID_B\Data\FB060225\
Data File : FB031853.D
Signal(s) : FID2B.CH
Acq On : 2 Jun 2025 20:39
Operator : YP/AJ
Sample : Q2150-04
Misc : 5.46G/5.00 ML DI WATER
ALS Vial : 24 Sample Multiplier: 1

Instrument :
FID_B
ClientSampleId :
TP-48

Integration File: Calibration.e
Quant Time: Jun 03 05:29:40 2025
Quant Method : Z:\pestpcbsrv\HPCHEM1\FID_B\Method\FB053025.M
Quant Title :
QLast Update : Fri May 30 15:30:47 2025
Response via : Initial Calibration
Integrator: ChemStation

Volume Inj. : 5 g/ml
Signal Phase : RTX-502.2
Signal Info : 60mx0.53mmx3.00um





#5 AAA-TFT

R.T.: 0.000 min
Exp R.T.: 8.798 min
Response: 0
Conc: N.D.

Instrument :
FID_B
ClientSampleId :
TP-48