

Data Path : Z:\pestpcbsrv\HPCHEM1\FID_B\Data\FB060723\
 Data File : FB030007.D
 Signal(s) : FID2B.CH
 Acq On : 7 Jun 2023 16:16
 Operator : YP/AJ
 Sample : 03047-06MS 50X
 Misc : 5.00G/5.00 ML MEOH
 ALS Vial : 12 Sample Multiplier: 1

Instrument :
 FID_B
 ClientSampleId :
 WC33MS

Integration File: Calibration.e
 Quant Time: Jun 08 01:16:46 2023
 Quant Method : Z:\pestpcbsrv\HPCHEM1\FID_B\Method\FB060323.M
 Quant Title :
 QLast Update : Mon Jun 05 04:33:00 2023
 Response via : Initial Calibration
 Integrator: ChemStation

Volume Inj. : 5 g/ml
 Signal Phase : RTX-502.2
 Signal Info : 60mx0.53mmx3.00um

Compound	R.T.	Response	Conc Units

System Monitoring Compounds			
5) s AAA-TFT	8.788	254711	18.308 ng/ml
Target Compounds			
1) t 2-Methylpentane	4.705	471099	24.934 ng/ml
2) t 2,2,4-Trimethylpentane	7.414	491701	26.058 ng/ml
3) t n-Heptane	7.747	172024	8.887 ng/ml
4) t Benzene	7.883	221797	9.909 ng/ml
6) t Toluene	10.616	629280	28.995 ng/ml
7) t Ethylbenzene	13.052	192300	9.510 ng/ml
8) t m-Xylene	13.185	384830	19.136 ng/ml
9) t O-Xylene	13.912	368924	18.928 ng/ml
10) t 1,2,4-Trimethylbenzene	16.187	352834	18.838 ng/ml

(f)=RT Delta > 1/2 Window

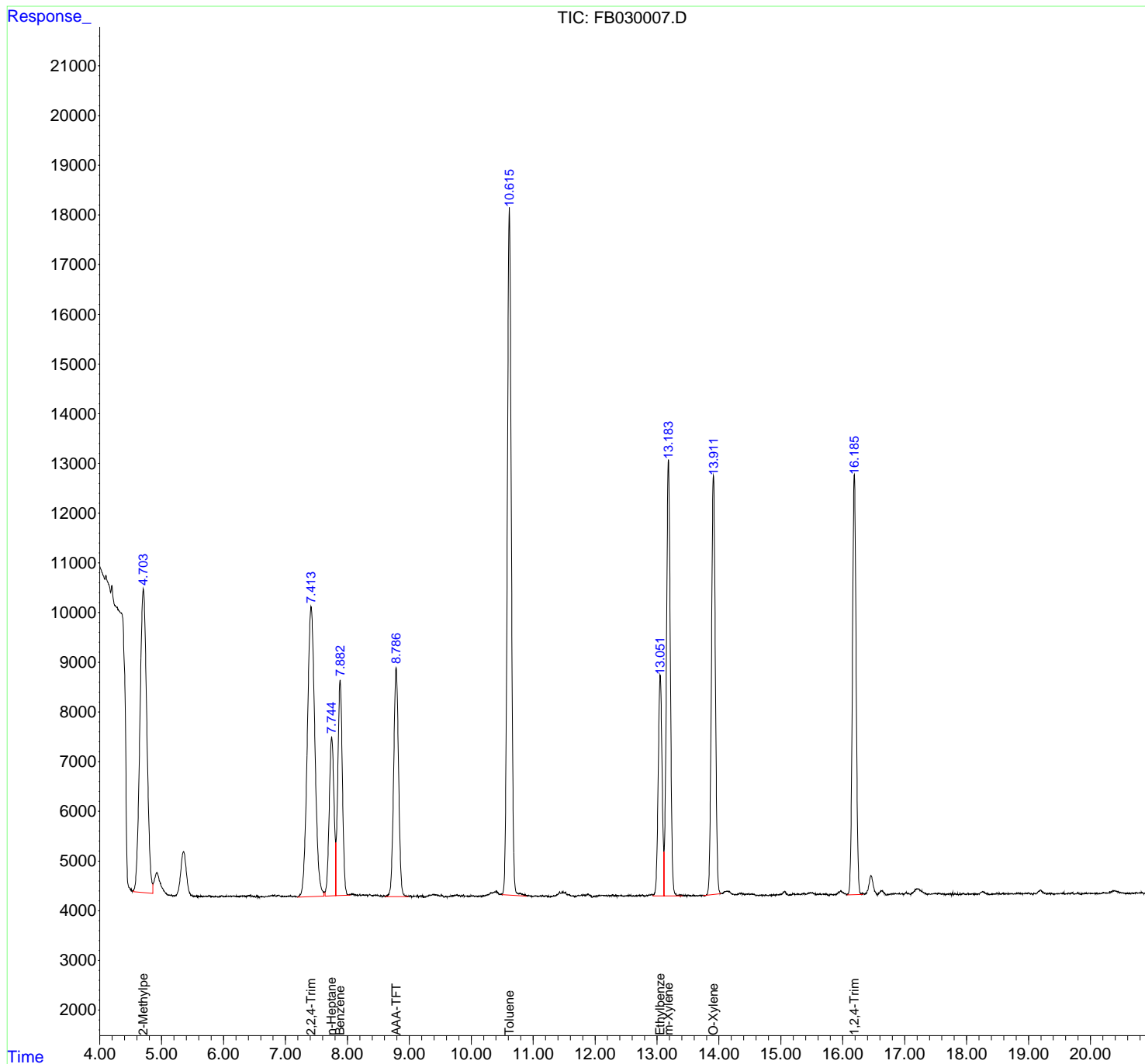
(m)=manual int.

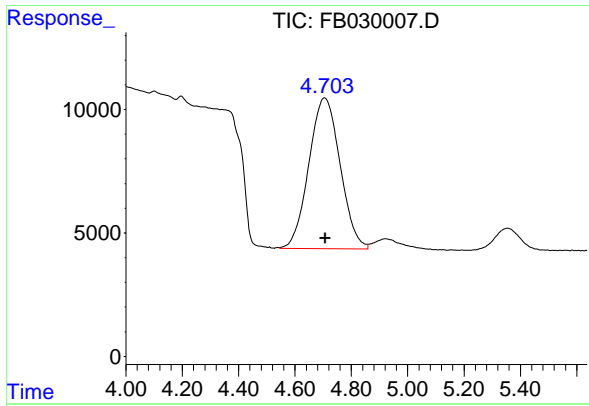
Data Path : Z:\pestpcbsrv\HPCHEM1\FID_B\Data\FB060723\
 Data File : FB030007.D
 Signal(s) : FID2B.CH
 Acq On : 7 Jun 2023 16:16
 Operator : YP/AJ
 Sample : 03047-06MS 50X
 Misc : 5.00G/5.00 ML MEOH
 ALS Vial : 12 Sample Multiplier: 1

Instrument :
 FID_B
 ClientSampleId :
 WC33MS

Integration File: Calibration.e
 Quant Time: Jun 08 01:16:46 2023
 Quant Method : Z:\pestpcbsrv\HPCHEM1\FID_B\Method\FB060323.M
 Quant Title :
 QLast Update : Mon Jun 05 04:33:00 2023
 Response via : Initial Calibration
 Integrator: ChemStation

Volume Inj. : 5 g/ml
 Signal Phase : RTX-502.2
 Signal Info : 60mx0.53mmx3.00um

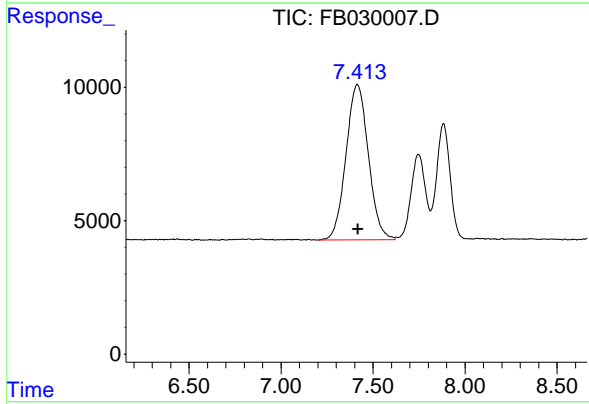




#1 2-Methylpentane

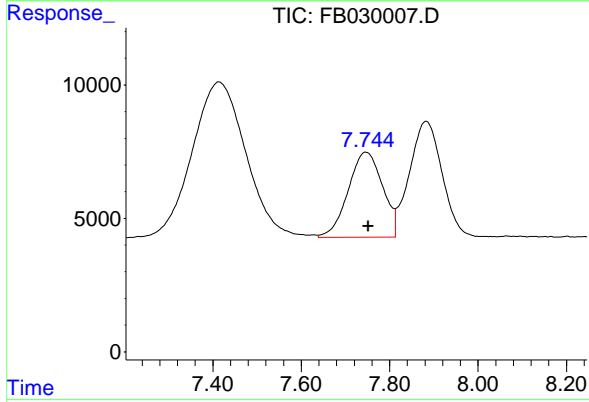
R.T.: 4.705 min
 Delta R.T.: -0.003 min
 Response: 471099
 Conc: 24.93 ng/ml

Instrument :
 FID_B
 ClientSampleId :
 WC33MS



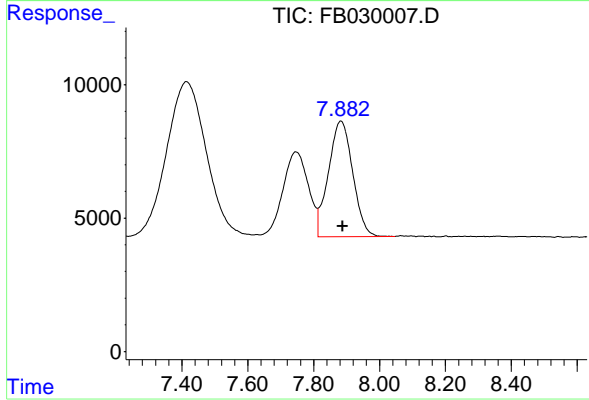
#2 2,2,4-Trimethylpentane

R.T.: 7.414 min
 Delta R.T.: -0.005 min
 Response: 491701
 Conc: 26.06 ng/ml



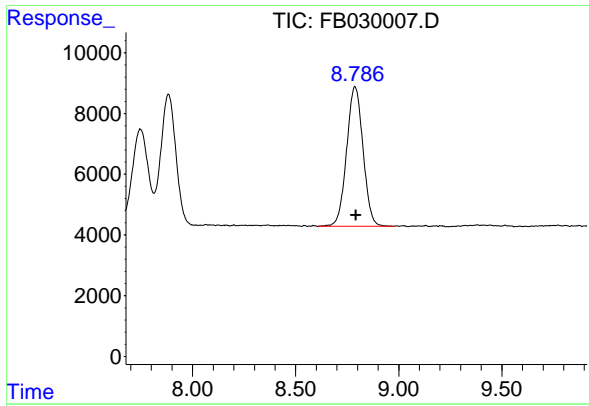
#3 n-Heptane

R.T.: 7.747 min
 Delta R.T.: -0.006 min
 Response: 172024
 Conc: 8.89 ng/ml



#4 Benzene

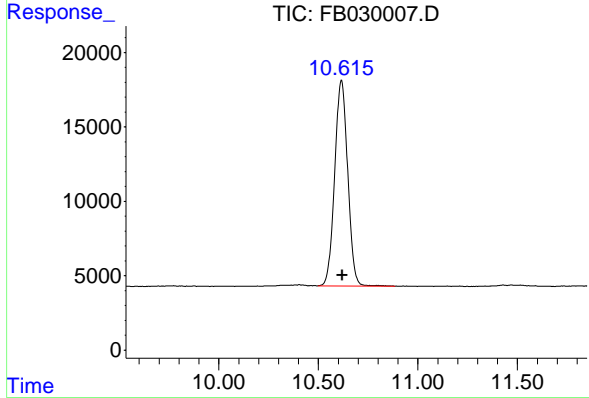
R.T.: 7.883 min
 Delta R.T.: -0.005 min
 Response: 221797
 Conc: 9.91 ng/ml



#5 AAA-TFT

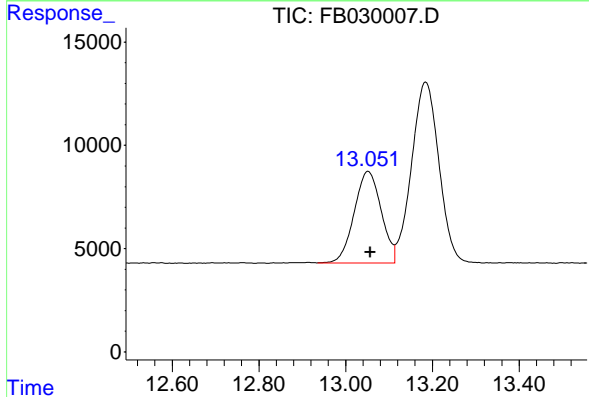
R.T.: 8.788 min
 Delta R.T.: -0.005 min
 Response: 254711
 Conc: 18.31 ng/ml

Instrument :
 FID_B
 ClientSampleId :
 WC33MS



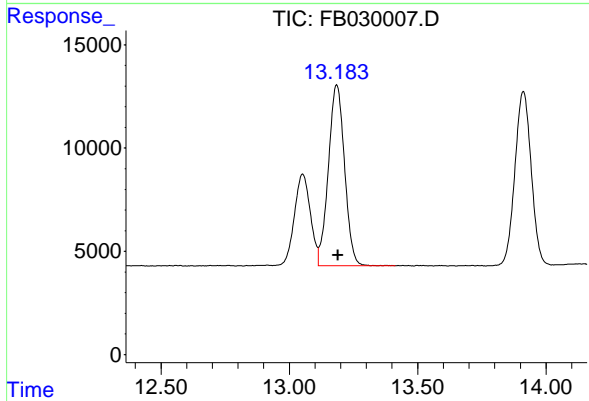
#6 Toluene

R.T.: 10.616 min
 Delta R.T.: -0.004 min
 Response: 629280
 Conc: 28.99 ng/ml



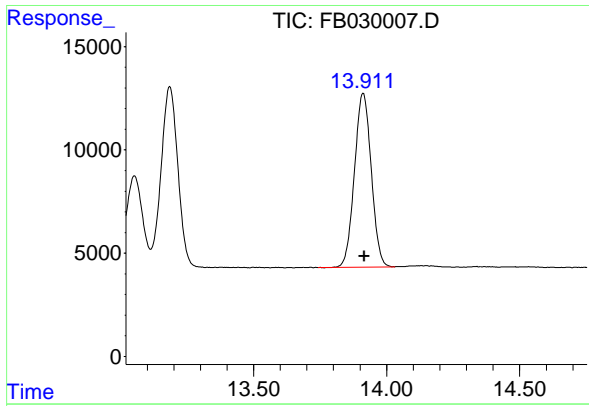
#7 Ethylbenzene

R.T.: 13.052 min
 Delta R.T.: -0.004 min
 Response: 192300
 Conc: 9.51 ng/ml



#8 m-Xylene

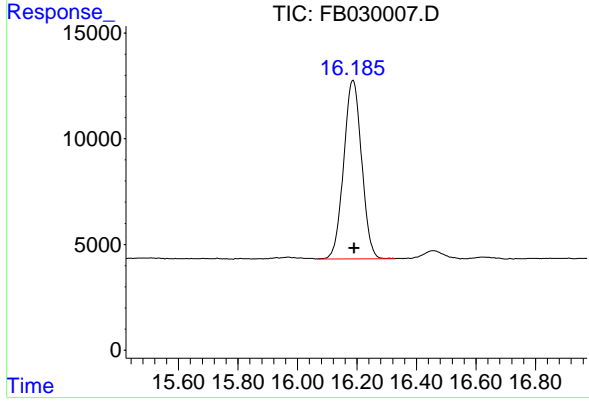
R.T.: 13.185 min
 Delta R.T.: -0.004 min
 Response: 384830
 Conc: 19.14 ng/ml



#9 O-Xylene

R.T.: 13.912 min
Delta R.T.: -0.004 min
Response: 368924
Conc: 18.93 ng/ml

Instrument : FID_B
ClientSampleId : WC33MS



#10 1,2,4-Trimethylbenzene

R.T.: 16.187 min
Delta R.T.: -0.004 min
Response: 352834
Conc: 18.84 ng/ml