

Data Path : Z:\pestpcbsrv\HPCHEM1\FID_B\Data\FB061819\
 Data File : FB021408.D
 Signal(s) : FID2B.CH
 Acq On : 18 Jun 2019 19:57
 Operator : MJ/SJ
 Sample : VBF0618S1
 Misc : 5.02g/5.00ml DI WATER
 ALS Vial : 2 Sample Multiplier: 1

Integration File: Calibration.e
 Quant Time: Jun 19 03:28:50 2019
 Quant Method : Z:\pestpcbsrv\HPCHEM1\FID_B\Method\FB052919.M
 Quant Title :
 QLast Update : Wed May 29 12:01:49 2019
 Response via : Initial Calibration
 Integrator: ChemStation

Volume Inj. : 5 g/ml
 Signal Phase : RTX-502.2
 Signal Info : 60mx0.53mmx3.00um

Compound	R.T.	Response	Conc Units

System Monitoring Compounds			
5) s AAA-TFT	8.990	316080	21.438 ng/ml
Target Compounds			
1) t 2-Methylpentane	4.850	7843	0.209 ng/ml
6) t Toluene	10.832	4423	0.187 ng/ml

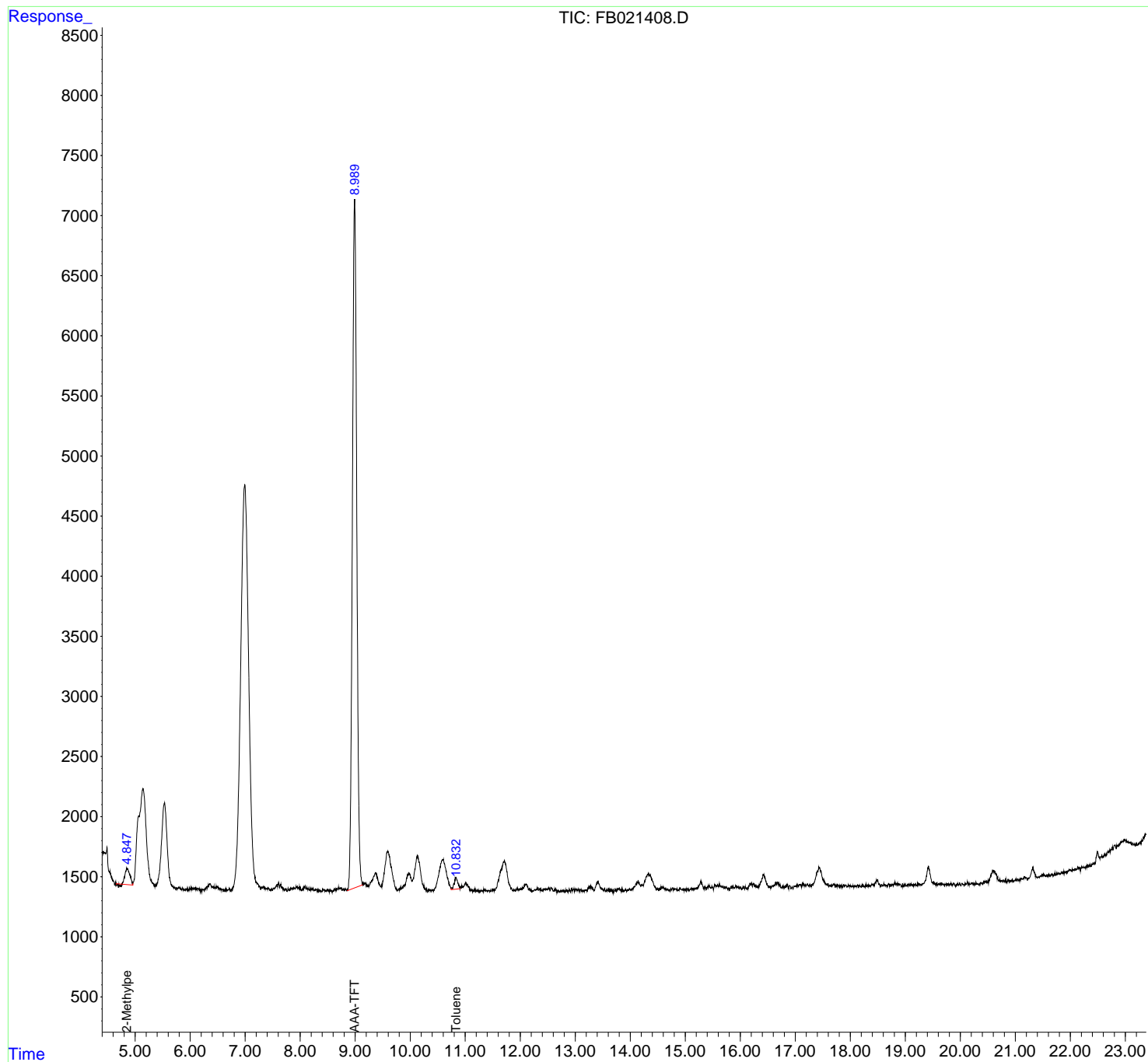
(f)=RT Delta > 1/2 Window

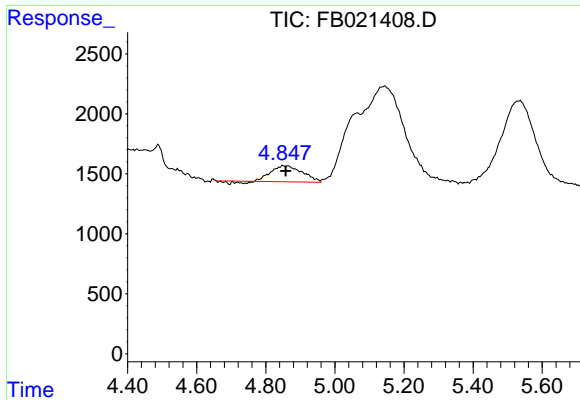
(m)=manual int.

Data Path : Z:\pestpcbsrv\HPCHEM1\FID_B\Data\FB061819\
Data File : FB021408.D
Signal(s) : FID2B.CH
Acq On : 18 Jun 2019 19:57
Operator : MJ/SJ
Sample : VBF0618S1
Misc : 5.02g/5.00ml DI WATER
ALS Vial : 2 Sample Multiplier: 1

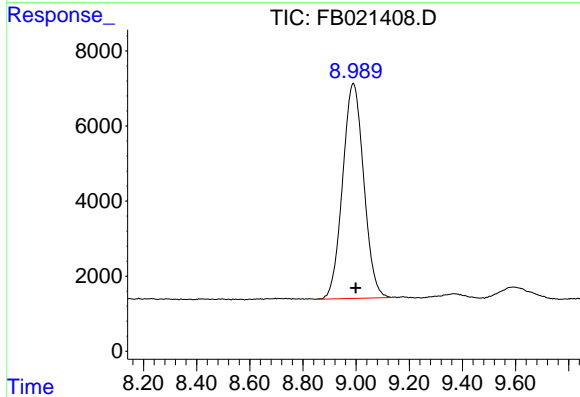
Integration File: Calibration.e
Quant Time: Jun 19 03:28:50 2019
Quant Method : Z:\pestpcbsrv\HPCHEM1\FID_B\Method\FB052919.M
Quant Title :
QLast Update : Wed May 29 12:01:49 2019
Response via : Initial Calibration
Integrator: ChemStation

Volume Inj. : 5 g/ml
Signal Phase : RTX-502.2
Signal Info : 60mx0.53mmx3.00um

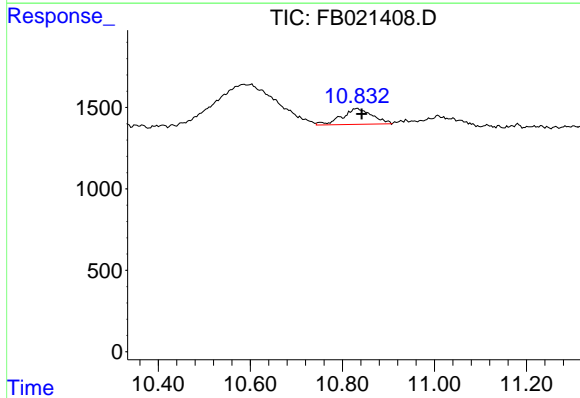




#1 2-Methylpentane
 R.T.: 4.850 min
 Delta R.T.: -0.008 min
 Response: 7843
 Conc: 0.21 ng/ml



#5 AAA-TFT
 R.T.: 8.990 min
 Delta R.T.: -0.008 min
 Response: 316080
 Conc: 21.44 ng/ml



#6 Toluene
 R.T.: 10.832 min
 Delta R.T.: -0.010 min
 Response: 4423
 Conc: 0.19 ng/ml