

Data Path : Z:\pestpcbsrv\HPCHEM1\FID\_B\Data\FB061819\  
Data File : FB021415.D  
Signal(s) : FID2B.CH  
Acq On : 18 Jun 2019 23:29  
Operator : MJ/SJ  
Sample : K3157-07  
Misc : 5.02g/5.00ml DI WATER  
ALS Vial : 9 Sample Multiplier: 1

Integration File: Calibration.e  
Quant Time: Jun 19 03:30:10 2019  
Quant Method : Z:\pestpcbsrv\HPCHEM1\FID\_B\Method\FB052919.M  
Quant Title :  
QLast Update : Wed May 29 12:01:49 2019  
Response via : Initial Calibration  
Integrator: ChemStation

Volume Inj. : 5 g/ml  
Signal Phase : RTX-502.2  
Signal Info : 60mx0.53mmx3.00um

Compound	R.T.	Response	Conc Units
-----			
System Monitoring Compounds			
5) s AAA-TFT	8.990	252176	17.104 ng/ml

Target Compounds

-----

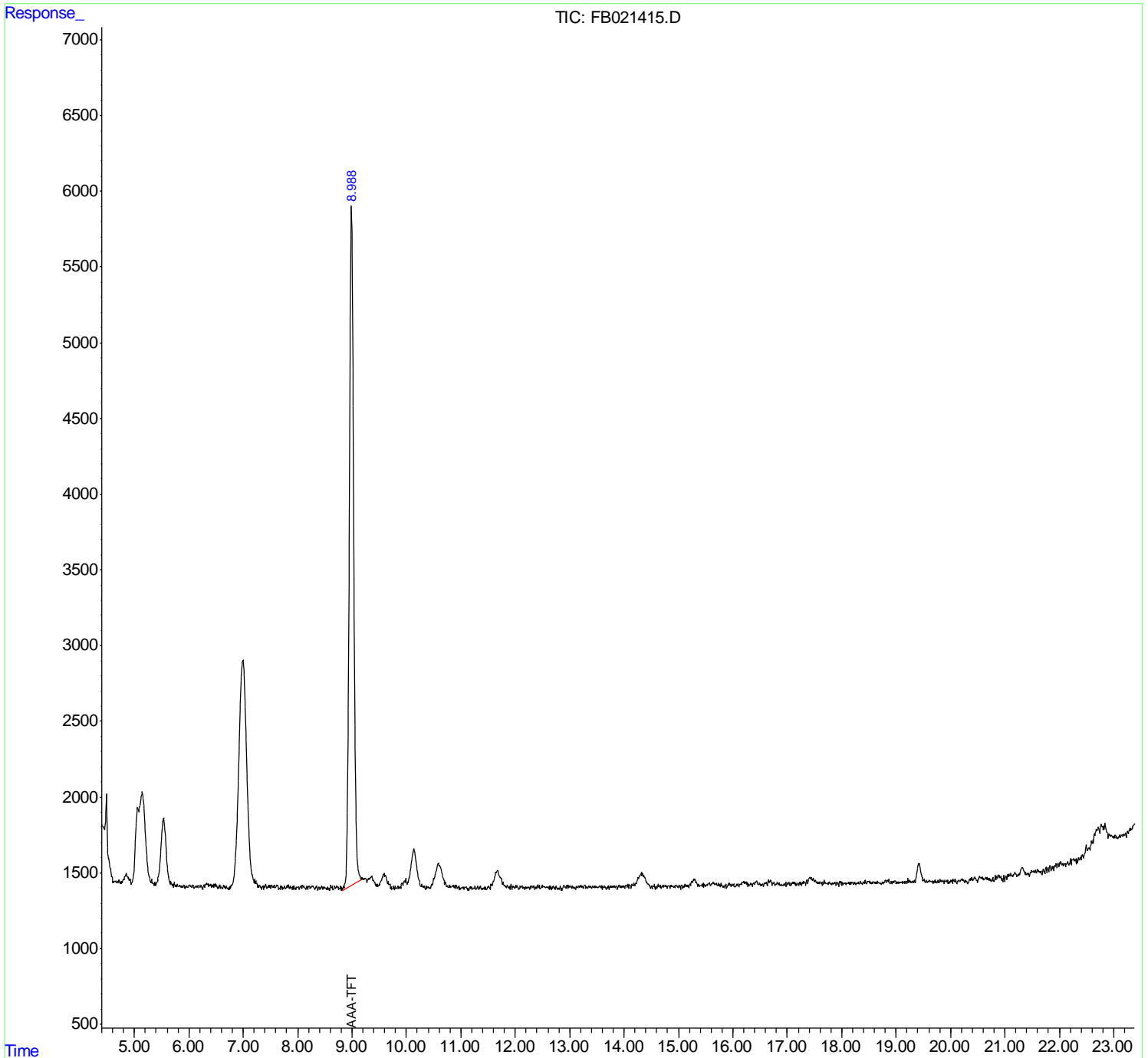
(f)=RT Delta > 1/2 Window

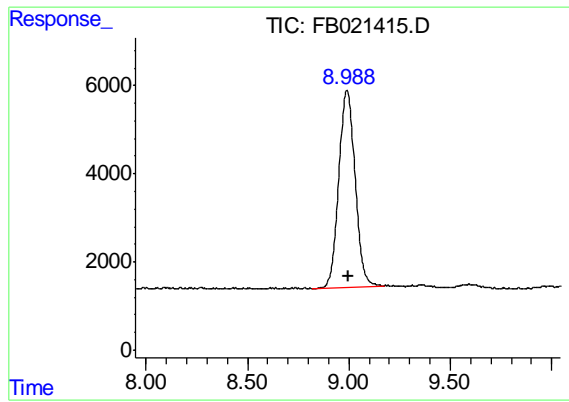
(m)=manual int.

Data Path : Z:\pestpcbsrv\HPCHEM1\FID\_B\Data\FB061819\  
 Data File : FB021415.D  
 Signal(s) : FID2B.CH  
 Acq On : 18 Jun 2019 23:29  
 Operator : MJ/SJ  
 Sample : K3157-07  
 Misc : 5.02g/5.00ml DI WATER  
 ALS Vial : 9 Sample Multiplier: 1

Integration File: Calibration.e  
 Quant Time: Jun 19 03:30:10 2019  
 Quant Method : Z:\pestpcbsrv\HPCHEM1\FID\_B\Method\FB052919.M  
 Quant Title :  
 QLast Update : Wed May 29 12:01:49 2019  
 Response via : Initial Calibration  
 Integrator: ChemStation

Volume Inj. : 5 g/ml  
 Signal Phase : RTX-502.2  
 Signal Info : 60mx0.53mmx3.00um





#5 AAA-TFT

R.T.: 8.990 min  
Delta R.T.: -0.008 min  
Response: 252176  
Conc: 17.10 ng/ml