

Data Path : Z:\pestpcbsrv\HPCHEM1\FID\_B\Data\FB062119\  
Data File : FB021471.D  
Signal(s) : FID2B.CH  
Acq On : 21 Jun 2019 17:08  
Operator : MJ/SJ  
Sample : K3470-10  
Misc : 5.02g/5.00ml DI WATER  
ALS Vial : 11 Sample Multiplier: 1

Integration File: Calibration.e  
Quant Time: Jun 22 00:16:19 2019  
Quant Method : Z:\pestpcbsrv\HPCHEM1\FID\_B\Method\FB052919.M  
Quant Title :  
QLast Update : Wed May 29 12:01:49 2019  
Response via : Initial Calibration  
Integrator: ChemStation

Volume Inj. : 5 g/ml  
Signal Phase : RTX-502.2  
Signal Info : 60mx0.53mmx3.00um

Compound	R.T.	Response	Conc Units
-----			
System Monitoring Compounds			
5) s AAA-TFT	8.993	301519	20.450 ng/ml
Target Compounds			
-----			

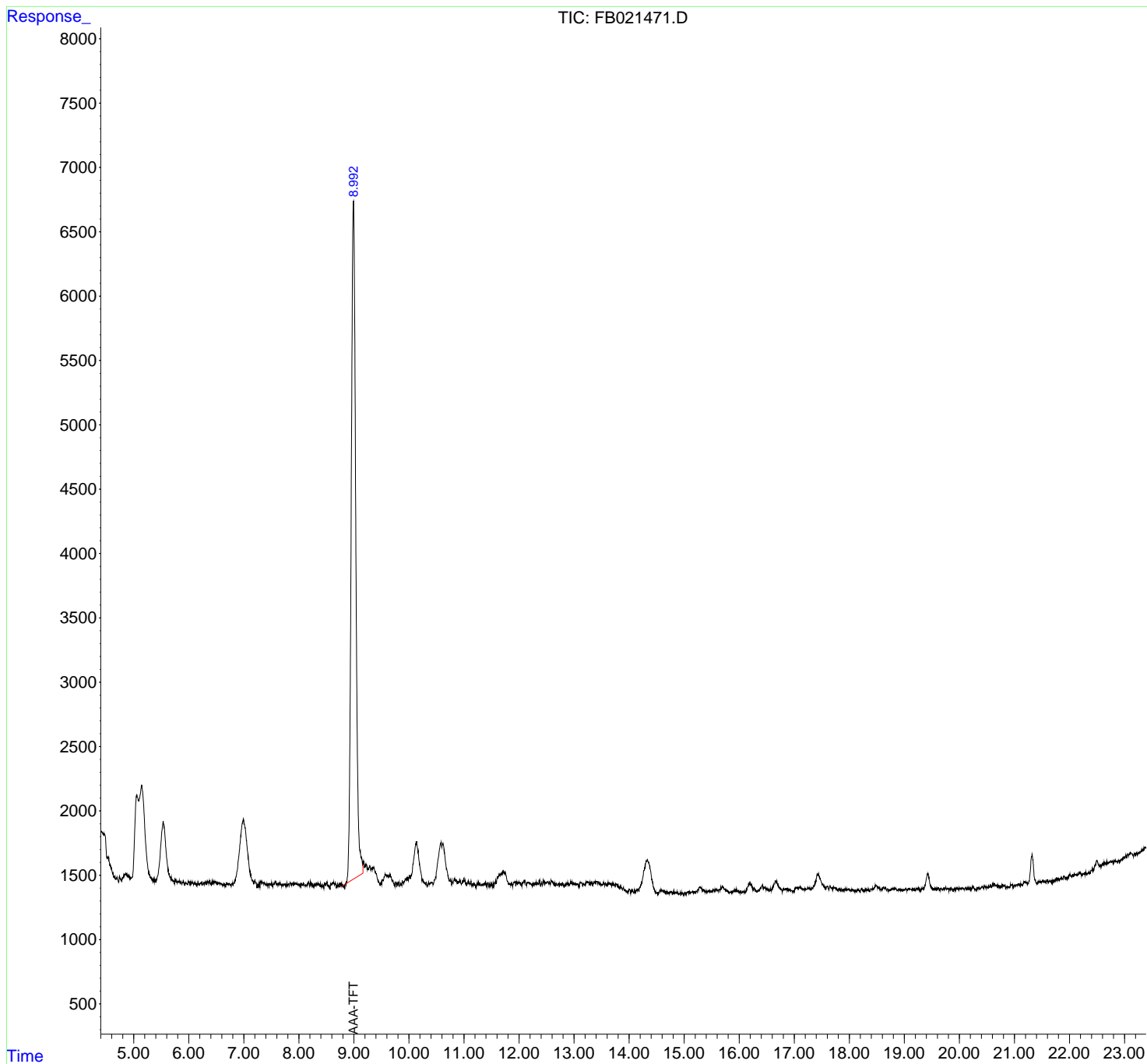
(f)=RT Delta > 1/2 Window

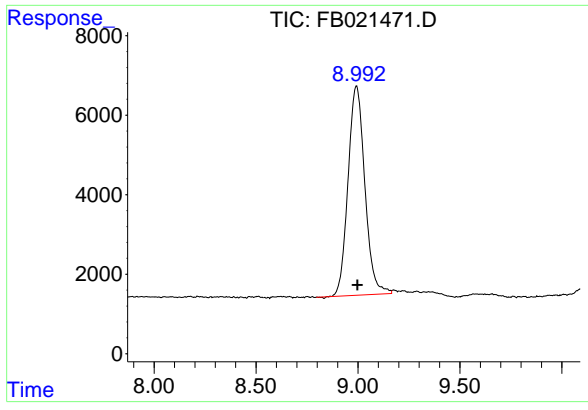
(m)=manual int.

Data Path : Z:\pestpcbsrv\HPCHEM1\FID\_B\Data\FB062119\  
 Data File : FB021471.D  
 Signal(s) : FID2B.CH  
 Acq On : 21 Jun 2019 17:08  
 Operator : MJ/SJ  
 Sample : K3470-10  
 Misc : 5.02g/5.00ml DI WATER  
 ALS Vial : 11 Sample Multiplier: 1

Integration File: Calibration.e  
 Quant Time: Jun 22 00:16:19 2019  
 Quant Method : Z:\pestpcbsrv\HPCHEM1\FID\_B\Method\FB052919.M  
 Quant Title :  
 QLast Update : Wed May 29 12:01:49 2019  
 Response via : Initial Calibration  
 Integrator: ChemStation

Volume Inj. : 5 g/ml  
 Signal Phase : RTX-502.2  
 Signal Info : 60mx0.53mmx3.00um





#5 AAA-TFT  
R.T.: 8.993 min  
Delta R.T.: -0.005 min  
Response: 301519  
Conc: 20.45 ng/ml