

Data Path : Z:\pestpcbsrv\HPCHEM1\FID_B\Data\FB062222\
 Data File : FB027511.D
 Signal(s) : FID2B.CH
 Acq On : 23 Jun 2022 3:26
 Operator : AJ/MA
 Sample : BSF0622S3
 Misc : 5.04G/5.00 ML DI WATER
 ALS Vial : 24 Sample Multiplier: 1

Instrument :
 FID_B
ClientSampleId :
 BSF0622S3

Manual Integrations
APPROVED

Reviewed By :Yogesh Patel 06/23/2022
 Supervised By :Ankita Jodhani 06/23/2022

Integration File: Calibration.e
 Quant Time: Jun 23 07:34:36 2022
 Quant Method : Z:\pestpcbsrv\HPCHEM1\FID_B\Method\FB061022.M
 Quant Title :
 QLast Update : Mon Jun 13 09:22:45 2022
 Response via : Initial Calibration
 Integrator: ChemStation

Volume Inj. : 5 g/ml
 Signal Phase : RTX-502.2
 Signal Info : 60mx0.53mmx3.00um

Compound	R.T.	Response	Conc Units

System Monitoring Compounds			
5) s AAA-TFT	8.792	196314	17.502 ng/mlm
Target Compounds			
1) t 2-Methylpentane	4.707	430421	25.548 ng/ml
2) t 2,2,4-Trimethylpentane	7.422	471502	26.853 ng/ml
3) t n-Heptane	7.752	143438	8.188 ng/ml
4) t Benzene	7.888	177884	8.723 ng/ml
6) t Toluene	10.621	489947	25.304 ng/ml
7) t Ethylbenzene	13.055	152560	8.424 ng/mlm
8) t m-Xylene	13.189	304618	17.088 ng/mlm
9) t O-Xylene	13.916	331601	19.084 ng/mlm
10) t 1,2,4-Trimethylbenzene	16.190	419861	24.441 ng/ml

(f)=RT Delta > 1/2 Window

(m)=manual int.

Data Path : Z:\pestpcbsrv\HPCHEM1\FID_B\Data\FB062222\
 Data File : FB027511.D
 Signal(s) : FID2B.CH
 Acq On : 23 Jun 2022 3:26
 Operator : AJ/MA
 Sample : BSF0622S3
 Misc : 5.04G/5.00 ML DI WATER
 ALS Vial : 24 Sample Multiplier: 1

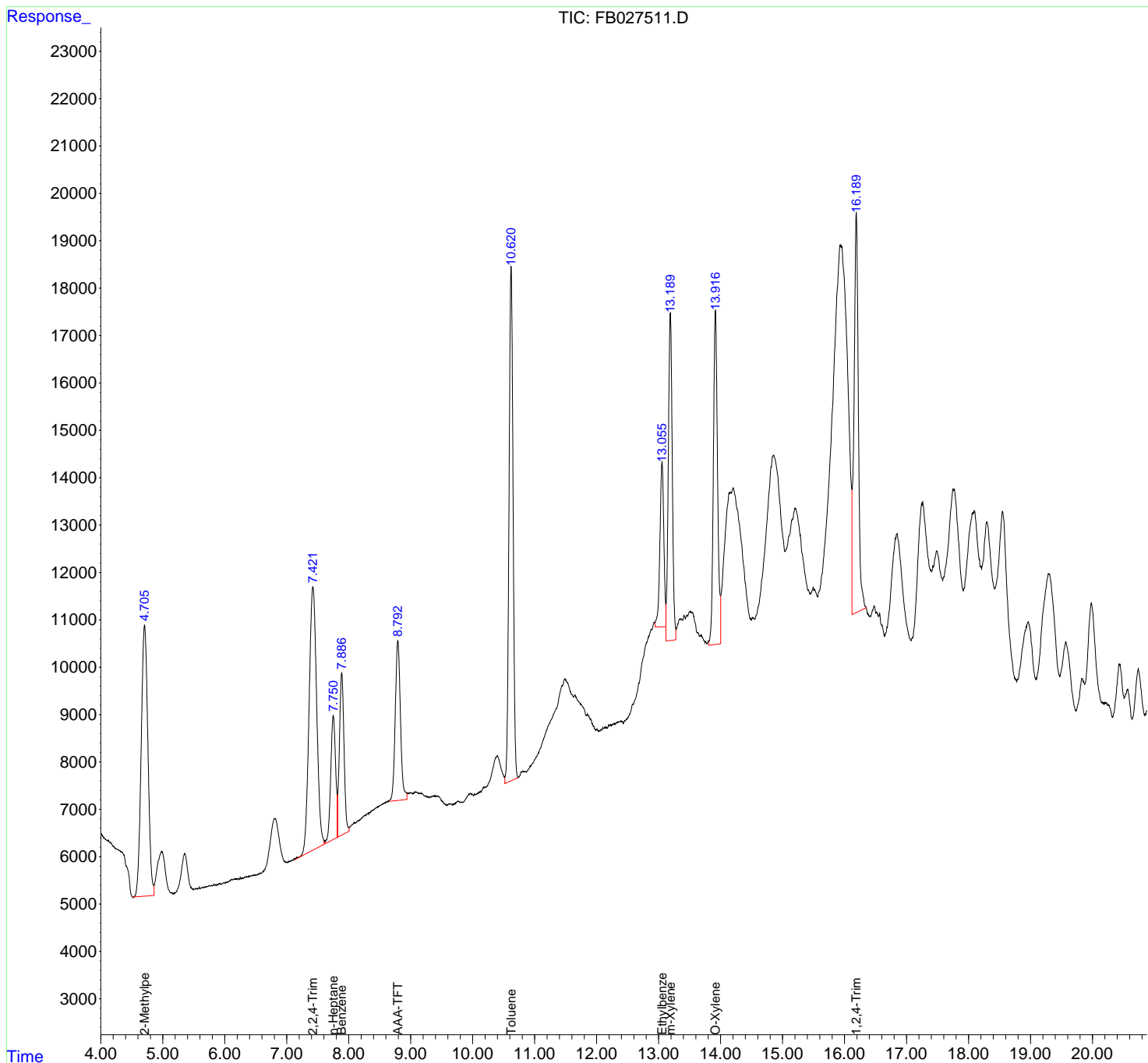
Instrument :
 FID_B
ClientSampleId :
 BSF0622S3

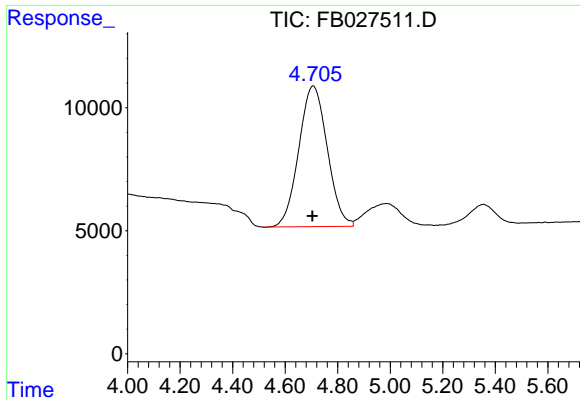
Manual Integrations
APPROVED

Reviewed By :Yogesh Patel 06/23/2022
 Supervised By :Ankita Jodhani 06/23/2022

Integration File: Calibration.e
 Quant Time: Jun 23 07:34:36 2022
 Quant Method : Z:\pestpcbsrv\HPCHEM1\FID_B\Method\FB061022.M
 Quant Title :
 QLast Update : Mon Jun 13 09:22:45 2022
 Response via : Initial Calibration
 Integrator: ChemStation

Volume Inj. : 5 g/ml
 Signal Phase : RTX-502.2
 Signal Info : 60mx0.53mmx3.00um





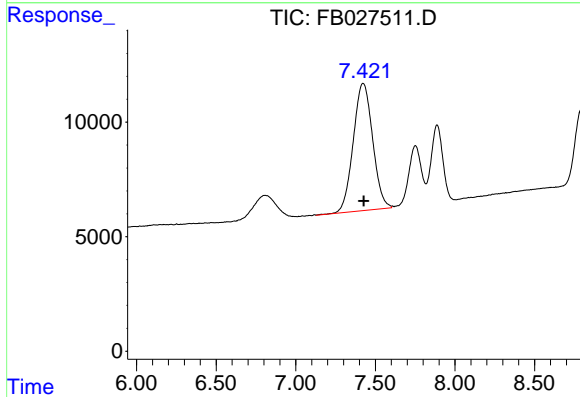
#1 2-Methylpentane

R.T.: 4.707 min
 Delta R.T.: 0.003 min
 Response: 430421
 Conc: 25.55 ng/ml

Instrument : FID_B
 ClientSampleId : BSF0622S3

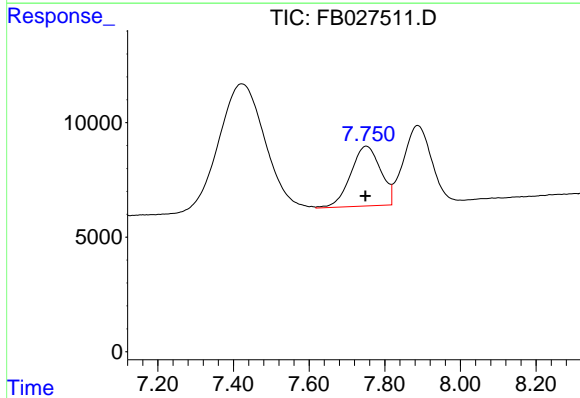
Manual Integrations
 APPROVED

Reviewed By :Yogesh Patel 06/23/2022
 Supervised By :Ankita Jodhani 06/23/2022



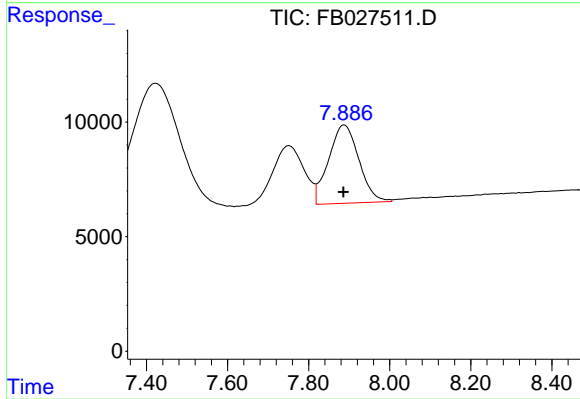
#2 2,2,4-Trimethylpentane

R.T.: 7.422 min
 Delta R.T.: -0.004 min
 Response: 471502
 Conc: 26.85 ng/ml



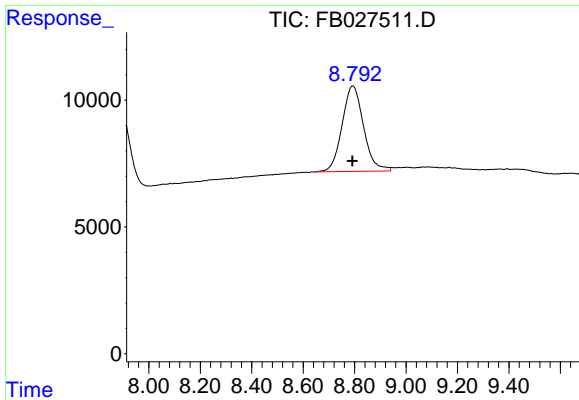
#3 n-Heptane

R.T.: 7.752 min
 Delta R.T.: 0.002 min
 Response: 143438
 Conc: 8.19 ng/ml



#4 Benzene

R.T.: 7.888 min
 Delta R.T.: 0.002 min
 Response: 177884
 Conc: 8.72 ng/ml



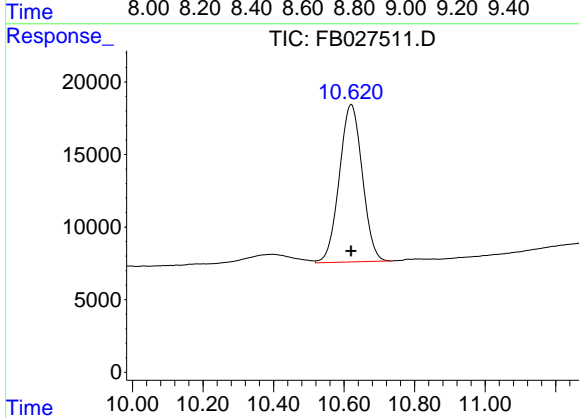
#5 AAA-TFT

R.T.: 8.792 min
 Delta R.T.: 0.001 min
 Response: 196314
 Conc: 17.50 ng/ml

Instrument : FID_B
 ClientSampleId : BSF0622S3

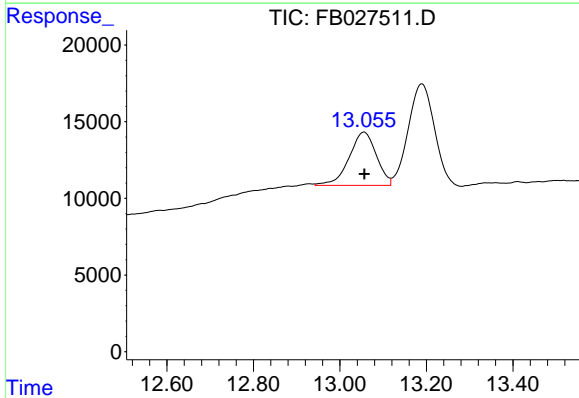
Manual Integrations
 APPROVED

Reviewed By :Yogesh Patel 06/23/2022
 Supervised By :Ankita Jodhani 06/23/2022



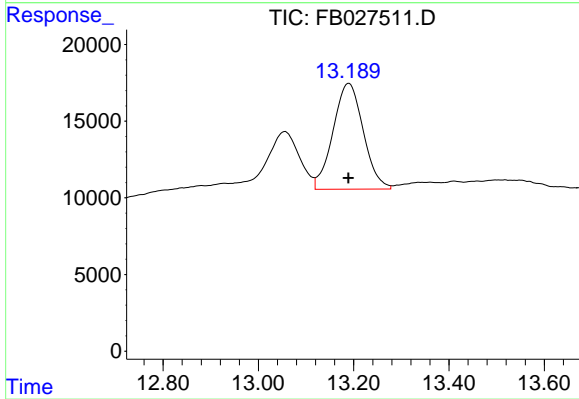
#6 Toluene

R.T.: 10.621 min
 Delta R.T.: 0.002 min
 Response: 489947
 Conc: 25.30 ng/ml



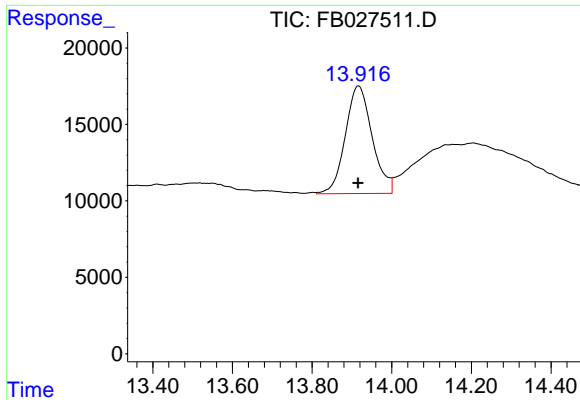
#7 Ethylbenzene

R.T.: 13.055 min
 Delta R.T.: -0.001 min
 Response: 152560
 Conc: 8.42 ng/ml m



#8 m-Xylene

R.T.: 13.189 min
 Delta R.T.: 0.000 min
 Response: 304618
 Conc: 17.09 ng/ml m



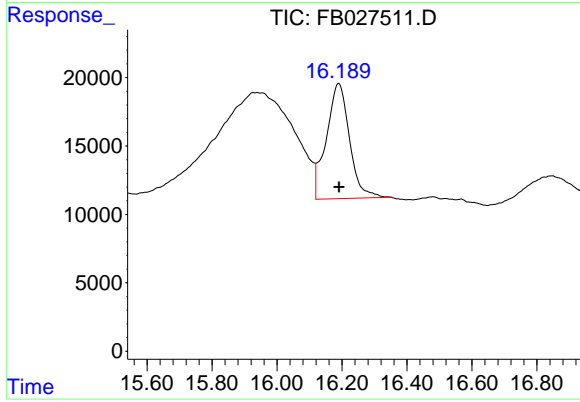
#9 O-Xylene

R.T.: 13.916 min
 Delta R.T.: 0.000 min
 Response: 331601
 Conc: 19.08 ng/ml

Instrument : FID_B
 ClientSampleId : BSF0622S3

Manual Integrations
 APPROVED

Reviewed By :Yogesh Patel 06/23/2022
 Supervised By :Ankita Jodhani 06/23/2022



#10 1,2,4-Trimethylbenzene

R.T.: 16.190 min
 Delta R.T.: -0.001 min
 Response: 419861
 Conc: 24.44 ng/ml