

Data Path : Z:\pestpcbsrv\HPCHEM1\FID_B\Data\FB062521\
 Data File : FB025902.D
 Signal(s) : FID2B.CH
 Acq On : 25 Jun 2021 7:50
 Operator : DD/AJ
 Sample : 20 PPB GRO STD
 Misc :
 ALS Vial : 1 Sample Multiplier: 1

Integration File: Calibration.e
 Quant Time: Jun 25 22:23:21 2021
 Quant Method : Z:\pestpcbsrv\HPCHEM1\FID_B\Method\FB060921.M
 Quant Title :
 QLast Update : Wed Jun 09 13:39:17 2021
 Response via : Initial Calibration
 Integrator: ChemStation

Volume Inj. : 5 g/ml
 Signal Phase : RTX-502.2
 Signal Info : 60mx0.53mmx3.00um

Compound	R.T.	Response	Conc Units

System Monitoring Compounds			
5) s AAA-TFT	9.211	480818	19.896 ng/ml
Target Compounds			
1) t 2-Methylpentane	5.181	741308	28.169 ng/ml
2) t 2,2,4-Trimethylpentane	7.866	669450	33.232 ng/ml
3) t n-Heptane	8.188	313715	8.727 ng/ml
4) t Benzene	8.339	378384	9.064 ng/ml
6) t Toluene	11.029	1083073	26.320 ng/ml
7) t Ethylbenzene	13.435	339889	8.918 ng/ml
8) t m-Xylene	13.565	672014	17.094 ng/ml
9) t O-Xylene	14.288	607118	19.041 ng/ml
10) t 1,2,4-Trimethylbenzene	16.540	438507	22.279 ng/ml

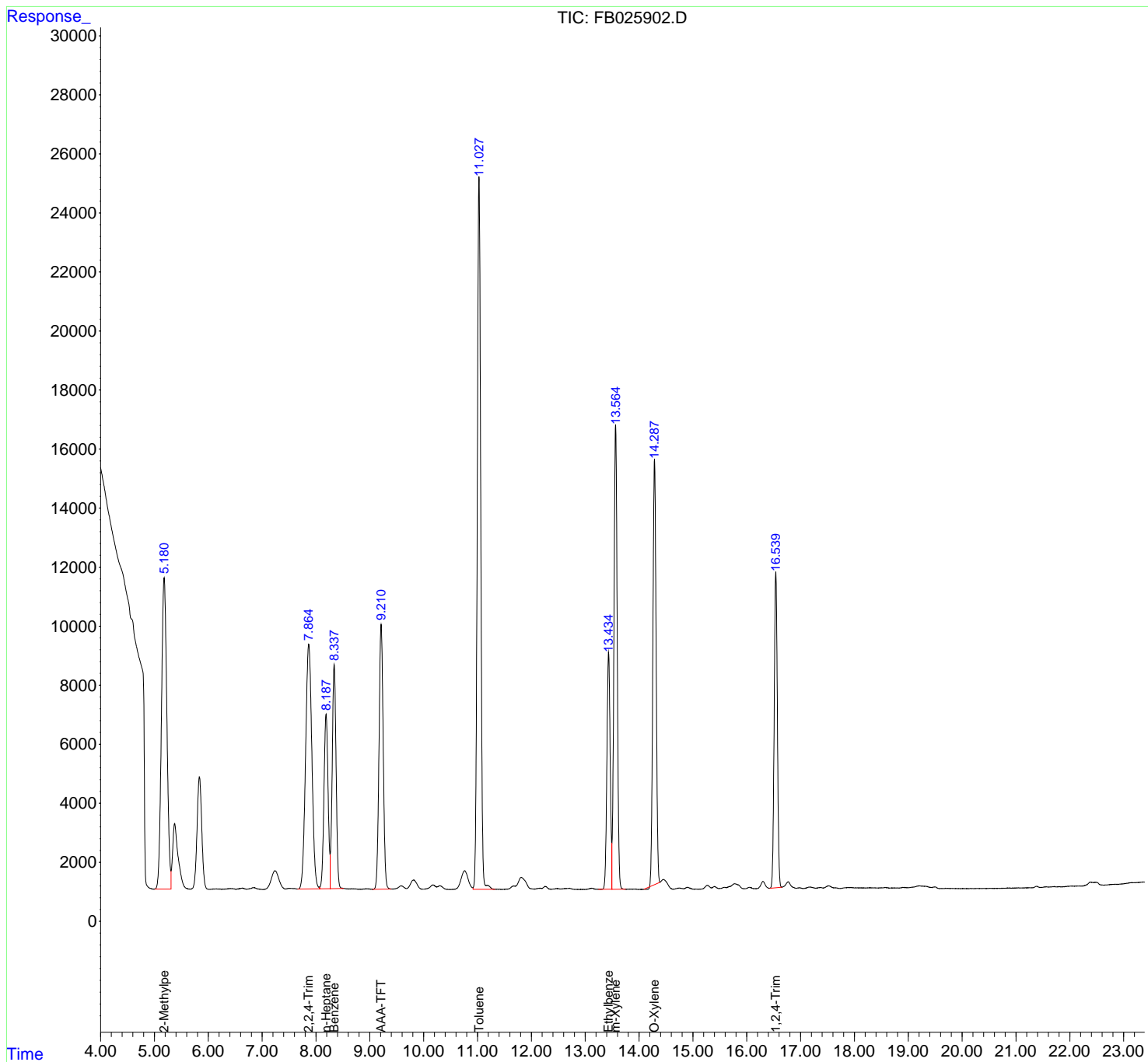
(f)=RT Delta > 1/2 Window

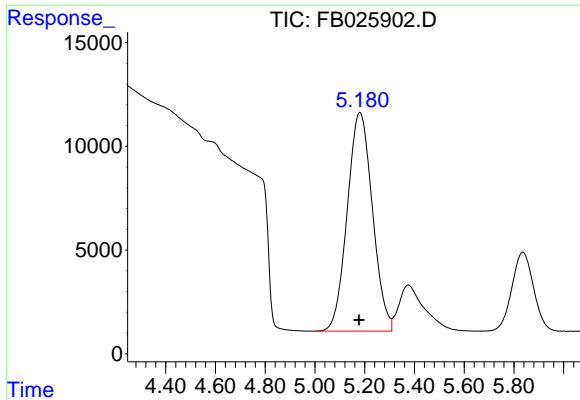
(m)=manual int.

Data Path : Z:\pestpcbsrv\HPCHEM1\FID_B\Data\FB062521\
 Data File : FB025902.D
 Signal(s) : FID2B.CH
 Acq On : 25 Jun 2021 7:50
 Operator : DD/AJ
 Sample : 20 PPB GRO STD
 Misc :
 ALS Vial : 1 Sample Multiplier: 1

Integration File: Calibration.e
 Quant Time: Jun 25 22:23:21 2021
 Quant Method : Z:\pestpcbsrv\HPCHEM1\FID_B\Method\FB060921.M
 Quant Title :
 QLast Update : Wed Jun 09 13:39:17 2021
 Response via : Initial Calibration
 Integrator: ChemStation

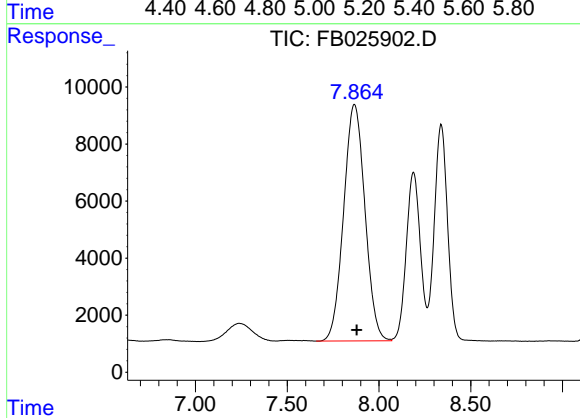
Volume Inj. : 5 g/ml
 Signal Phase : RTX-502.2
 Signal Info : 60mx0.53mmx3.00um





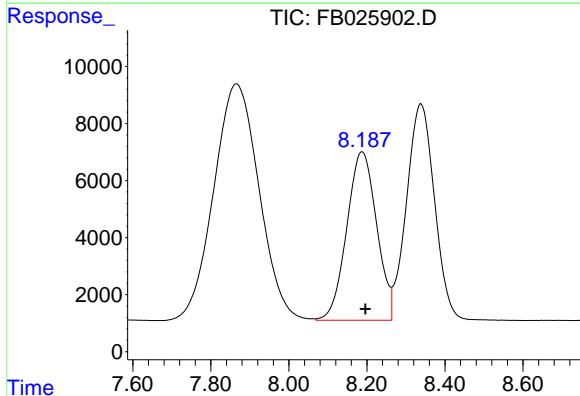
#1 2-Methylpentane

R.T.: 5.181 min
 Delta R.T.: 0.004 min
 Response: 741308
 Conc: 28.17 ng/ml



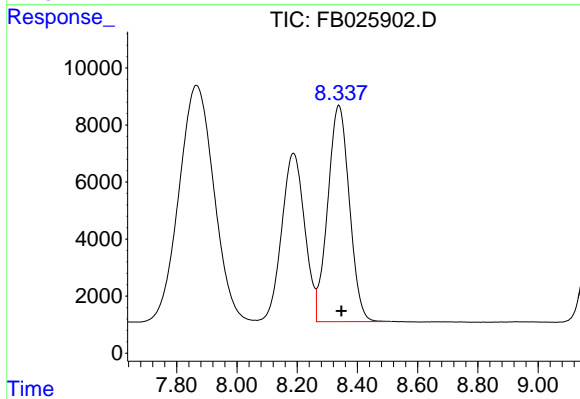
#2 2,2,4-Trimethylpentane

R.T.: 7.866 min
 Delta R.T.: -0.012 min
 Response: 669450
 Conc: 33.23 ng/ml



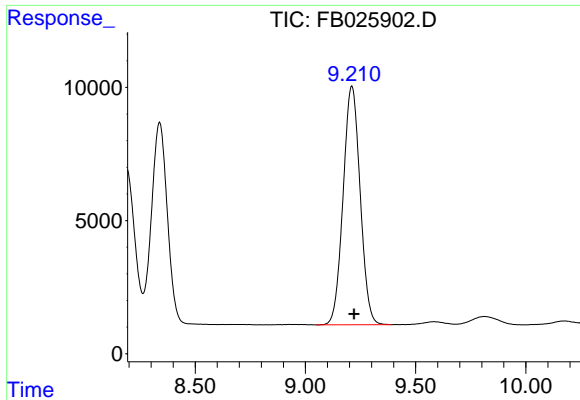
#3 n-Heptane

R.T.: 8.188 min
 Delta R.T.: -0.008 min
 Response: 313715
 Conc: 8.73 ng/ml

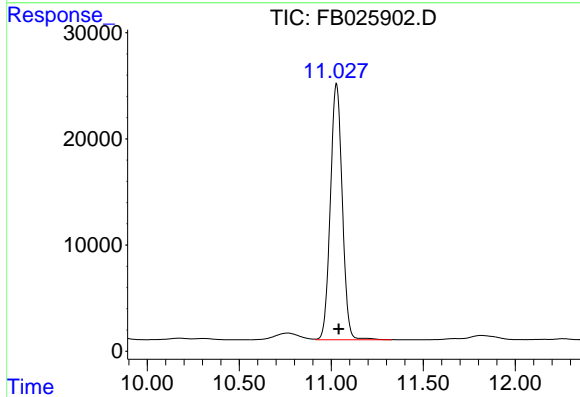


#4 Benzene

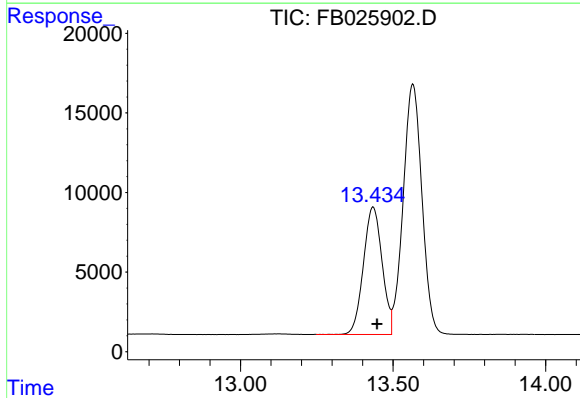
R.T.: 8.339 min
 Delta R.T.: -0.008 min
 Response: 378384
 Conc: 9.06 ng/ml



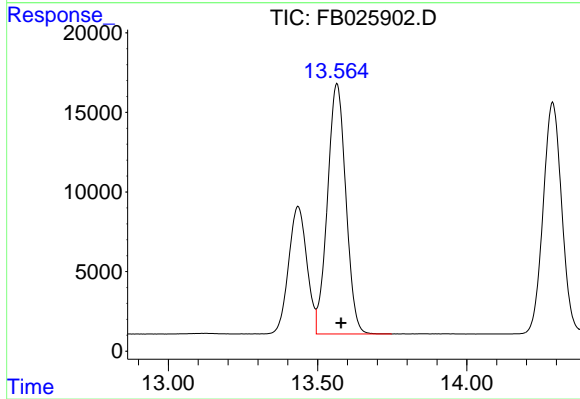
#5 AAA-TFT
 R.T.: 9.211 min
 Delta R.T.: -0.010 min
 Response: 480818
 Conc: 19.90 ng/ml



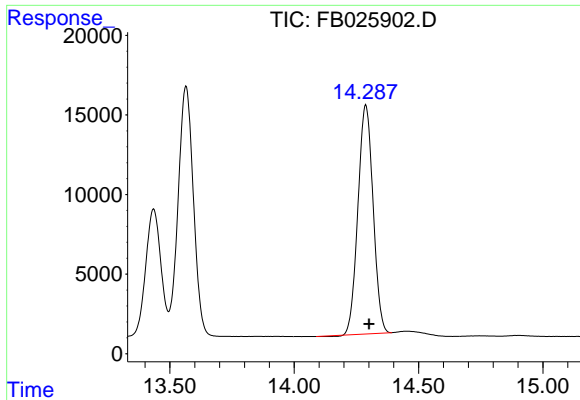
#6 Toluene
 R.T.: 11.029 min
 Delta R.T.: -0.013 min
 Response: 1083073
 Conc: 26.32 ng/ml



#7 Ethylbenzene
 R.T.: 13.435 min
 Delta R.T.: -0.013 min
 Response: 339889
 Conc: 8.92 ng/ml



#8 m-Xylene
 R.T.: 13.565 min
 Delta R.T.: -0.013 min
 Response: 672014
 Conc: 17.09 ng/ml



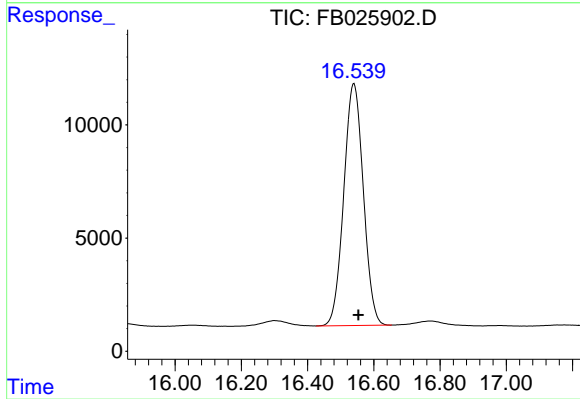
#9 O-Xylene

R.T.: 14.288 min

Delta R.T.: -0.013 min

Response: 607118

Conc: 19.04 ng/ml



#10 1,2,4-Trimethylbenzene

R.T.: 16.540 min

Delta R.T.: -0.013 min

Response: 438507

Conc: 22.28 ng/ml