

Data Path : Z:\pestpcbsrv\HPCHEM1\FID_B\Data\FB062619\
Data File : FB021511.D
Signal(s) : FID2B.CH
Acq On : 26 Jun 2019 16:58
Operator : MJ/SJ
Sample : K3528-02
Misc : 5.04g/5.00ml DI WATER
ALS Vial : 17 Sample Multiplier: 1

Integration File: Calibration.e
Quant Time: Jun 27 07:27:13 2019
Quant Method : Z:\pestpcbsrv\HPCHEM1\FID_B\Method\FB062419.M
Quant Title :
QLast Update : Mon Jun 24 15:15:58 2019
Response via : Initial Calibration
Integrator: ChemStation

Volume Inj. : 5 g/ml
Signal Phase : RTX-502.2
Signal Info : 60mx0.53mmx3.00um

| Compound | R.T. | Response | Conc Units |
|-----------------------------|-------|----------|--------------|
| ----- | | | |
| System Monitoring Compounds | | | |
| 5) s AAA-TFT | 8.991 | 258959 | 18.729 ng/ml |
| Target Compounds | | | |
| 1) t 2-Methylpentane | 4.853 | 4921 | 0.144 ng/ml |
| ----- | | | |

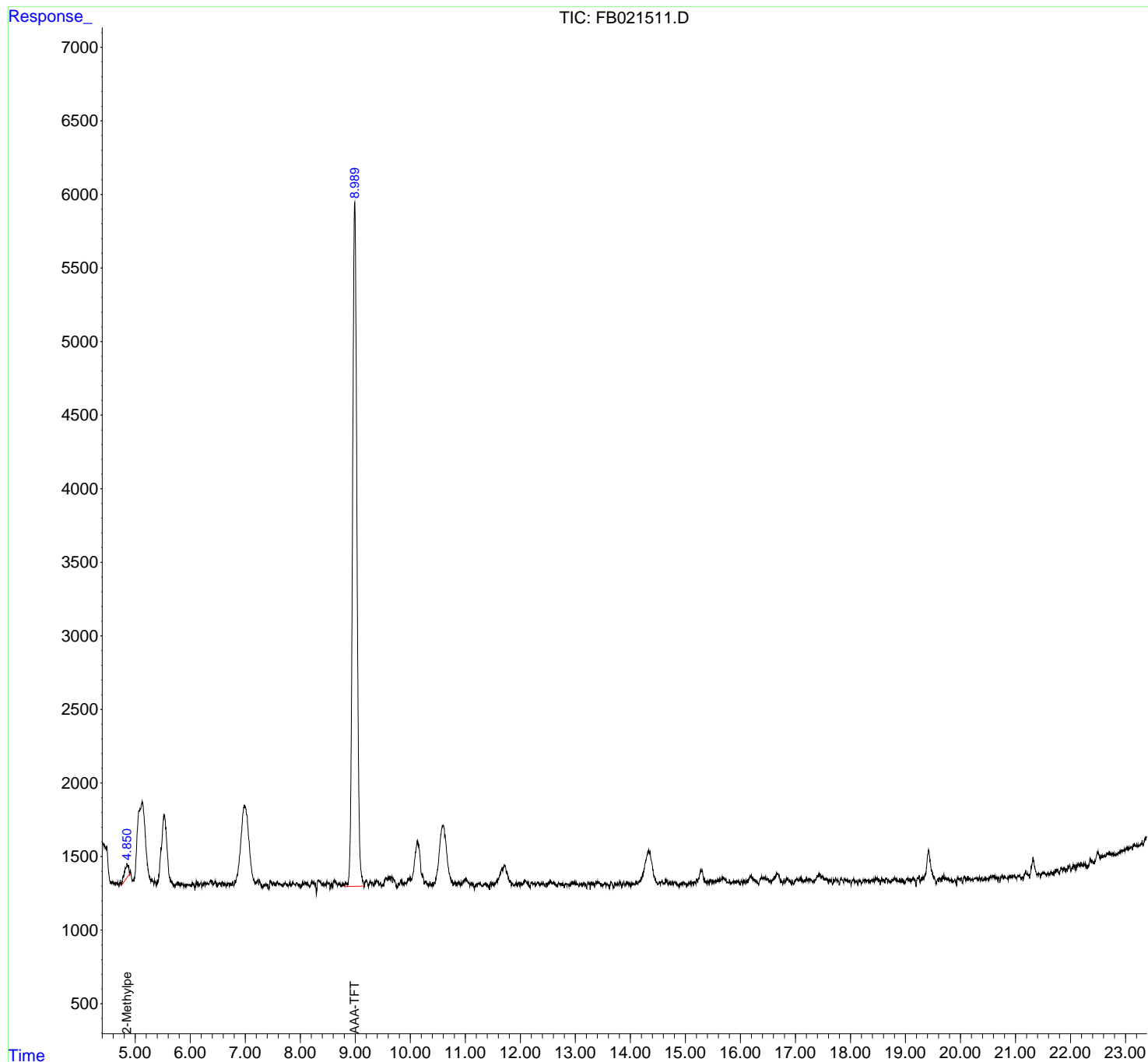
(f)=RT Delta > 1/2 Window

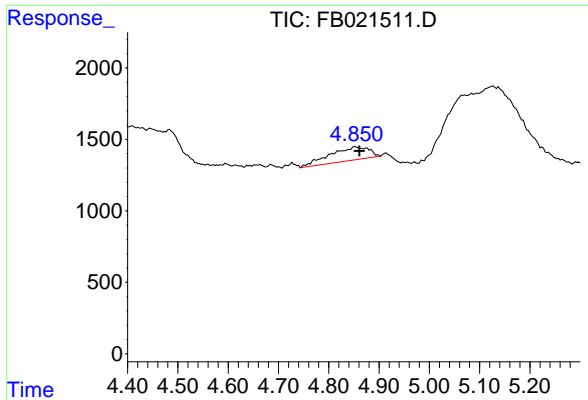
(m)=manual int.

Data Path : Z:\pestpcbsrv\HPCHEM1\FID_B\Data\FB062619\
Data File : FB021511.D
Signal(s) : FID2B.CH
Acq On : 26 Jun 2019 16:58
Operator : MJ/SJ
Sample : K3528-02
Misc : 5.04g/5.00ml DI WATER
ALS Vial : 17 Sample Multiplier: 1

Integration File: Calibration.e
Quant Time: Jun 27 07:27:13 2019
Quant Method : Z:\pestpcbsrv\HPCHEM1\FID_B\Method\FB062419.M
Quant Title :
QLast Update : Mon Jun 24 15:15:58 2019
Response via : Initial Calibration
Integrator: ChemStation

Volume Inj. : 5 g/ml
Signal Phase : RTX-502.2
Signal Info : 60mx0.53mmx3.00um





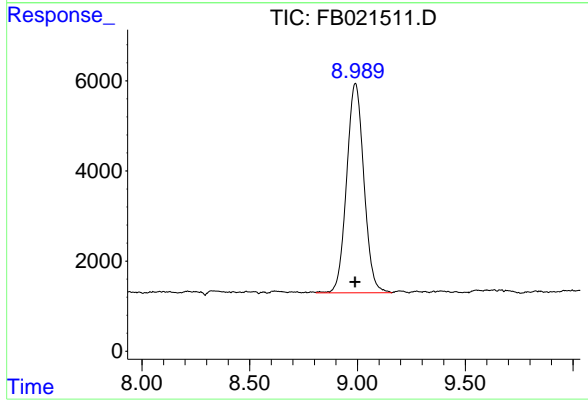
#1 2-Methylpentane

R.T.: 4.853 min

Delta R.T.: -0.008 min

Response: 4921

Conc: 0.14 ng/ml



#5 AAA-TFT

R.T.: 8.991 min

Delta R.T.: 0.002 min

Response: 258959

Conc: 18.73 ng/ml