

Data Path : Z:\pestpcbsrv\HPCHEM1\FID_B\Data\FB062718\
 Data File : FB016431.D
 Signal(s) : FID2B.CH
 Acq On : 27 Jun 2018 2:30 pm
 Operator : MJ/SJ
 Sample : BSF0627S1
 Misc : 5.00g/5.00mL DI Water
 ALS Vial : 5 Sample Multiplier: 1

Integration File: Calibration.e
 Quant Time: Jun 27 15:29:08 2018
 Quant Method : Z:\pestpcbsrv\HPCHEM1\FID_B\Method\FB060118.M
 Quant Title :
 QLast Update : Fri Jun 01 13:25:03 2018
 Response via : Initial Calibration
 Integrator: ChemStation

Volume Inj. : 5 g/ml
 Signal Phase : RTX-502.2
 Signal Info : 60mx0.53mmx3.00um

Compound	R.T.	Response	Conc Units

System Monitoring Compounds			
5) s AAA-TFT	9.116	148139	21.079 ng/ml
Target Compounds			
1) t 2-Methylpentane	4.967	300398	24.773 ng/ml
2) t 2,2,4-Trimethylpentane	7.730	313845	27.100 ng/ml
3) t n-Heptane	8.074	81023	7.403 ng/ml
4) t Benzene	8.211	147766	9.952 ng/ml
6) t Toluene	10.964	317893	25.610 ng/ml
7) t Ethylbenzene	13.414	125917	8.996 ng/ml
8) t m-Xylene	13.546	270220	17.753 ng/ml
9) t O-Xylene	14.278	289946	18.580 ng/ml
10) t 1,2,4-Trimethylbenzene	16.560	309641	17.979 ng/ml

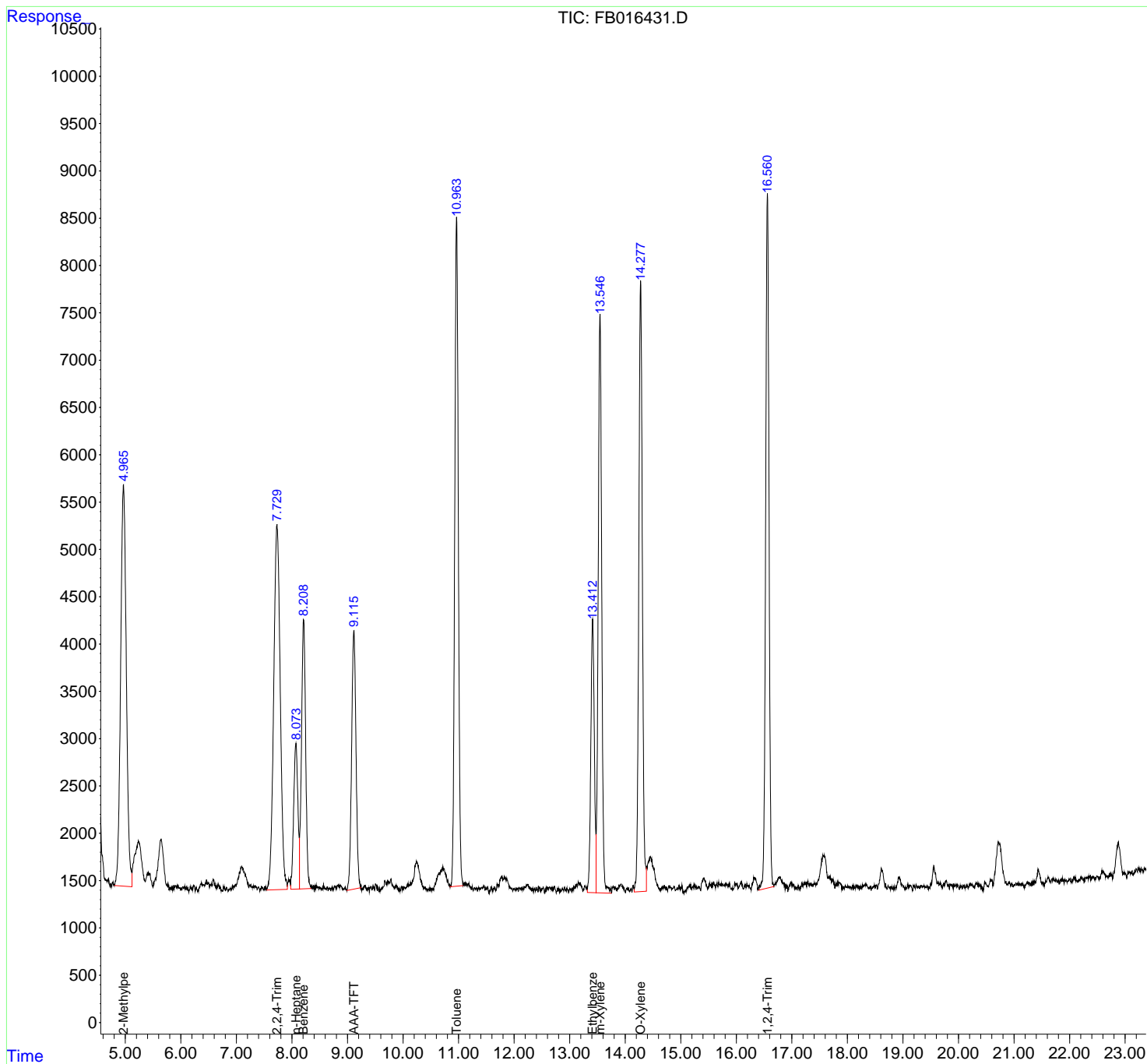
(f)=RT Delta > 1/2 Window

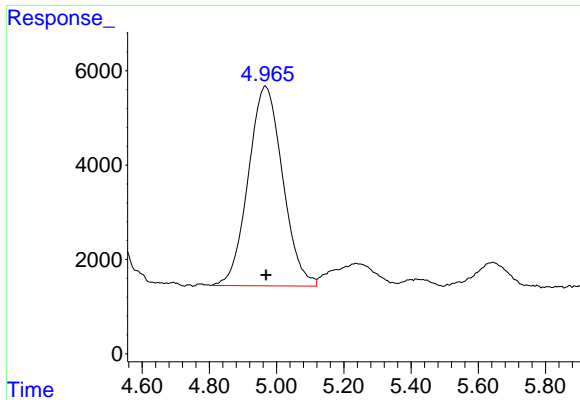
(m)=manual int.

Data Path : Z:\pestpcbsrv\HPCHEM1\FID_B\Data\FB062718\
 Data File : FB016431.D
 Signal(s) : FID2B.CH
 Acq On : 27 Jun 2018 2:30 pm
 Operator : MJ/SJ
 Sample : BSF0627S1
 Misc : 5.00g/5.00mL DI Water
 ALS Vial : 5 Sample Multiplier: 1

Integration File: Calibration.e
 Quant Time: Jun 27 15:29:08 2018
 Quant Method : Z:\pestpcbsrv\HPCHEM1\FID_B\Method\FB060118.M
 Quant Title :
 QLast Update : Fri Jun 01 13:25:03 2018
 Response via : Initial Calibration
 Integrator: ChemStation

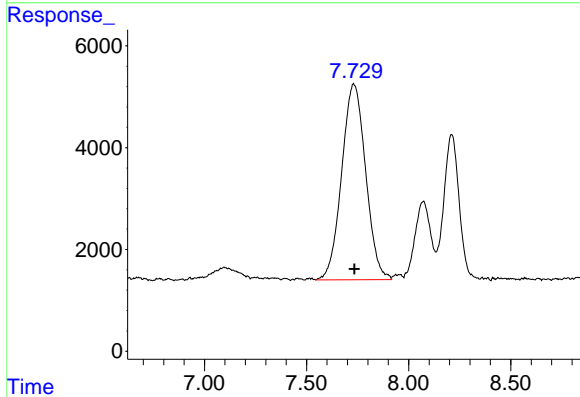
Volume Inj. : 5 g/ml
 Signal Phase : RTX-502.2
 Signal Info : 60mx0.53mmx3.00um





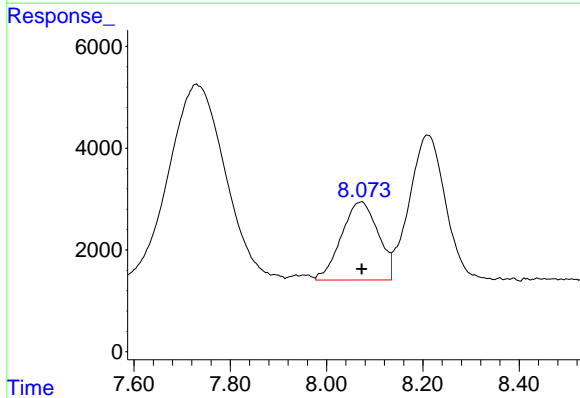
#1 2-Methylpentane

R.T.: 4.967 min
 Delta R.T.: -0.002 min
 Response: 300398
 Conc: 24.77 ng/ml



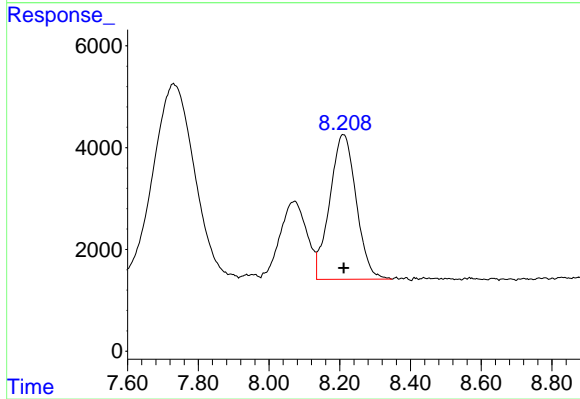
#2 2,2,4-Trimethylpentane

R.T.: 7.730 min
 Delta R.T.: -0.004 min
 Response: 313845
 Conc: 27.10 ng/ml



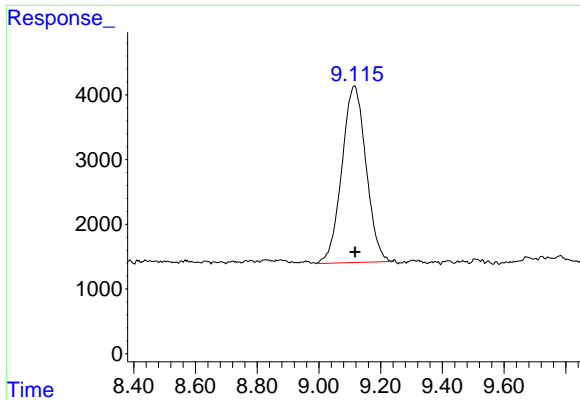
#3 n-Heptane

R.T.: 8.074 min
 Delta R.T.: 0.000 min
 Response: 81023
 Conc: 7.40 ng/ml

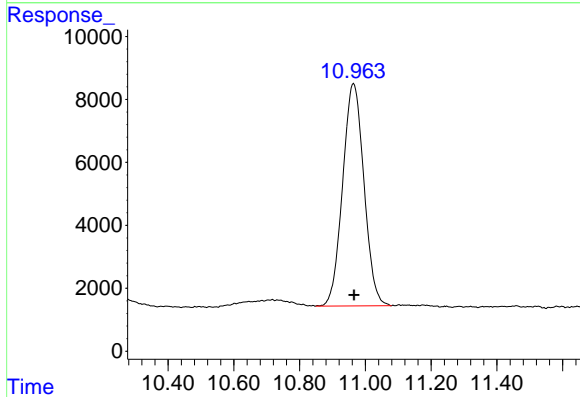


#4 Benzene

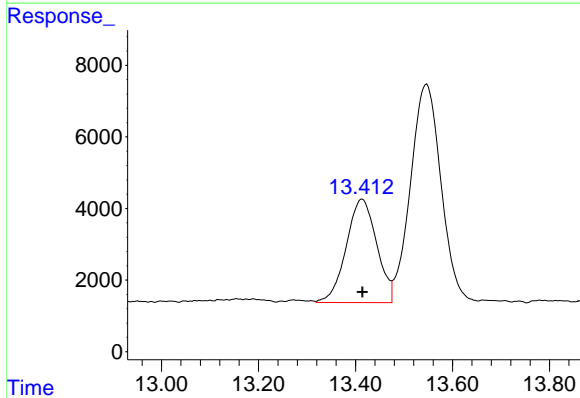
R.T.: 8.211 min
 Delta R.T.: 0.000 min
 Response: 147766
 Conc: 9.95 ng/ml



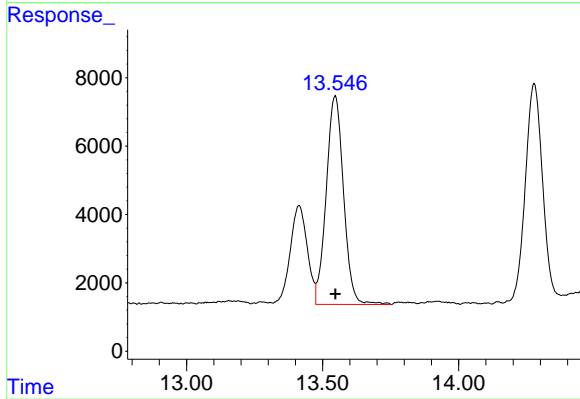
#5 AAA-TFT
 R.T.: 9.116 min
 Delta R.T.: -0.001 min
 Response: 148139
 Conc: 21.08 ng/ml



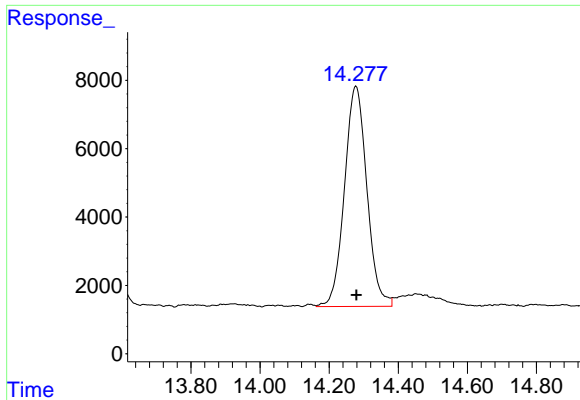
#6 Toluene
 R.T.: 10.964 min
 Delta R.T.: -0.001 min
 Response: 317893
 Conc: 25.61 ng/ml



#7 Ethylbenzene
 R.T.: 13.414 min
 Delta R.T.: 0.000 min
 Response: 125917
 Conc: 9.00 ng/ml

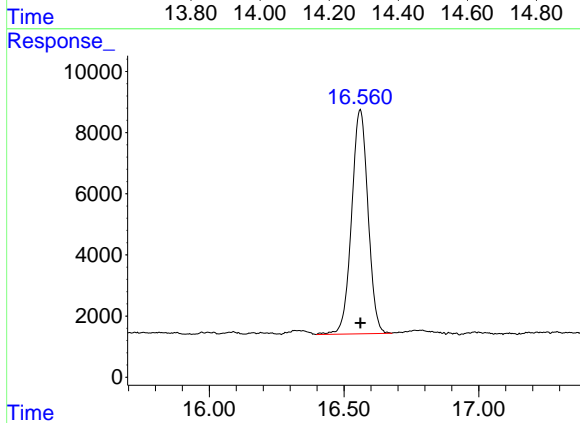


#8 m-Xylene
 R.T.: 13.546 min
 Delta R.T.: 0.000 min
 Response: 270220
 Conc: 17.75 ng/ml



#9 O-Xylene

R.T.: 14.278 min
Delta R.T.: 0.000 min
Response: 289946
Conc: 18.58 ng/ml



#10 1,2,4-Trimethylbenzene

R.T.: 16.560 min
Delta R.T.: 0.000 min
Response: 309641
Conc: 17.98 ng/ml