

Data Path : Z:\pestpcbsrv\HPCHEM1\FID_B\Data\FB062719\
Data File : FB021545.D
Signal(s) : FID2B.CH
Acq On : 28 Jun 2019 2:28
Operator : MJ/SJ
Sample : K3554-07
Misc : 5.00g/5.00ml DI WATER
ALS Vial : 30 Sample Multiplier: 1

Integration File: Calibration.e
Quant Time: Jun 28 07:55:06 2019
Quant Method : Z:\pestpcbsrv\HPCHEM1\FID_B\Method\FB062419.M
Quant Title :
QLast Update : Mon Jun 24 16:18:04 2019
Response via : Initial Calibration
Integrator: ChemStation

Volume Inj. : 5 g/ml
Signal Phase : RTX-502.2
Signal Info : 60mx0.53mmx3.00um

Compound	R.T.	Response	Conc Units

System Monitoring Compounds			
5) s AAA-TFT	8.987	295143	21.346 ng/ml

Target Compounds

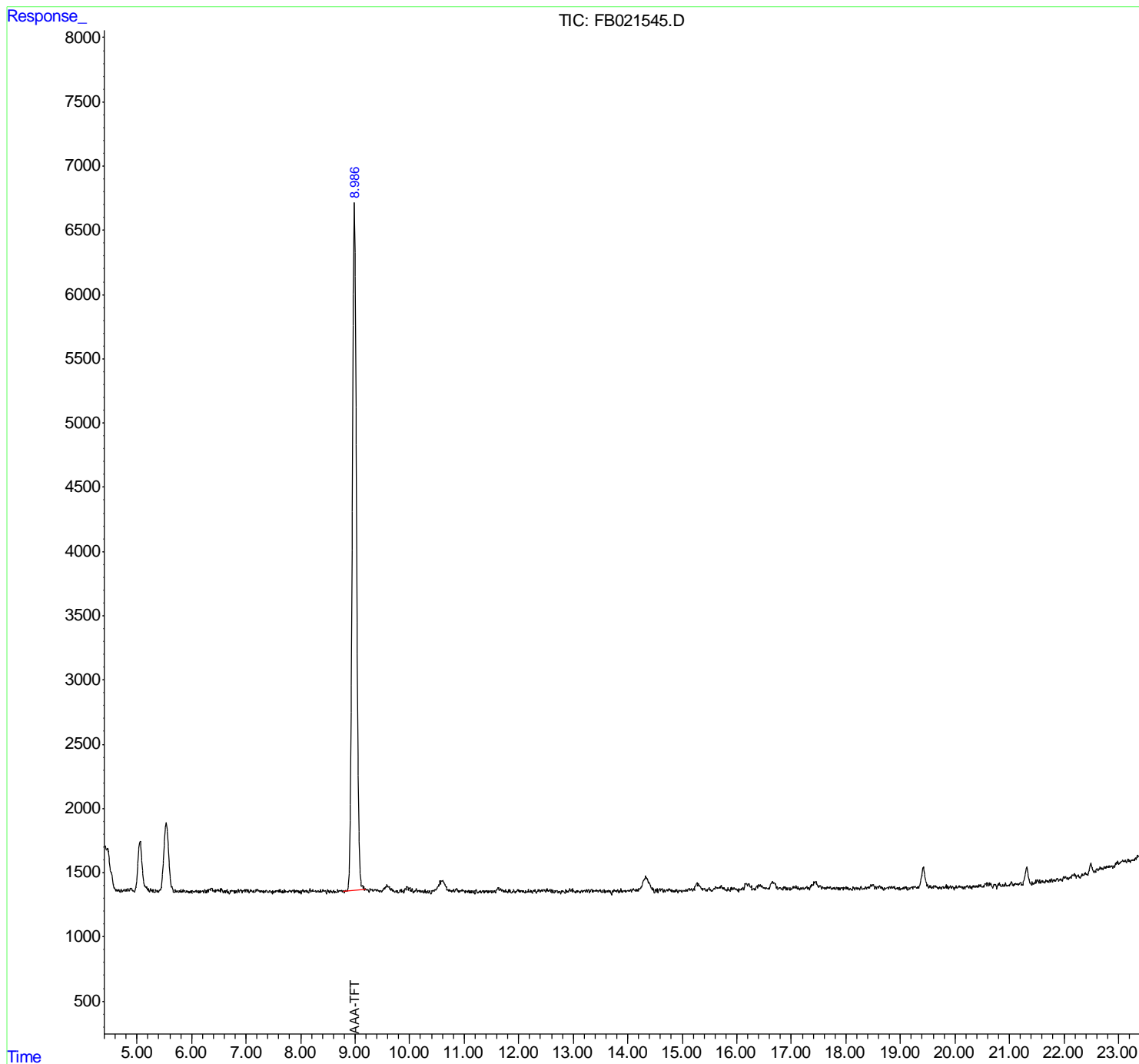
(f)=RT Delta > 1/2 Window

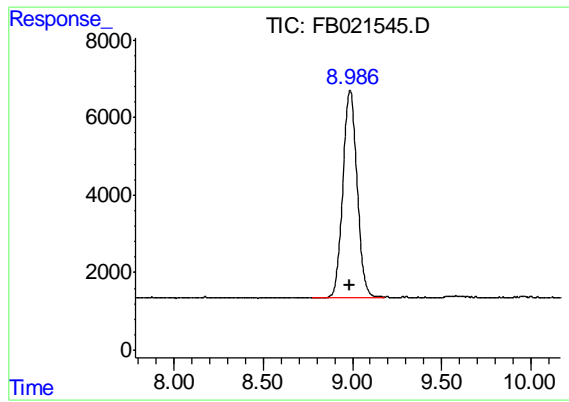
(m)=manual int.

Data Path : Z:\pestpcbsrv\HPCHEM1\FID_B\Data\FB062719\
Data File : FB021545.D
Signal(s) : FID2B.CH
Acq On : 28 Jun 2019 2:28
Operator : MJ/SJ
Sample : K3554-07
Misc : 5.00g/5.00ml DI WATER
ALS Vial : 30 Sample Multiplier: 1

Integration File: Calibration.e
Quant Time: Jun 28 07:55:06 2019
Quant Method : Z:\pestpcbsrv\HPCHEM1\FID_B\Method\FB062419.M
Quant Title :
QLast Update : Mon Jun 24 16:18:04 2019
Response via : Initial Calibration
Integrator: ChemStation

Volume Inj. : 5 g/ml
Signal Phase : RTX-502.2
Signal Info : 60mx0.53mmx3.00um





#5 AAA-TFT

R.T.: 8.987 min
Delta R.T.: -0.001 min
Response: 295143
Conc: 21.35 ng/ml